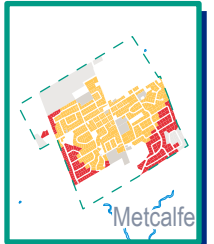
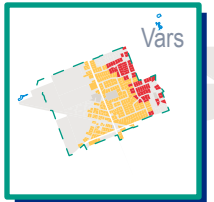
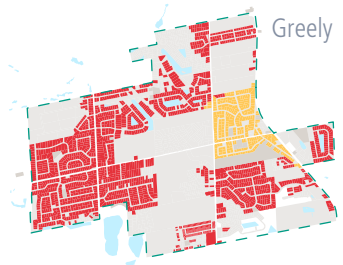
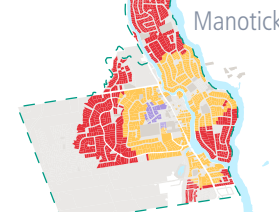
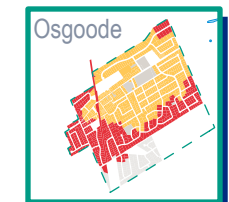
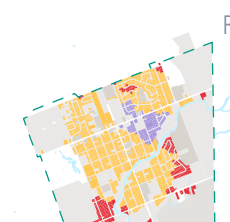
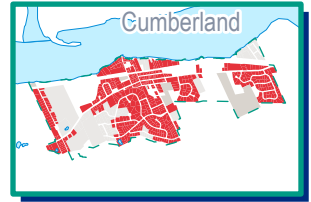
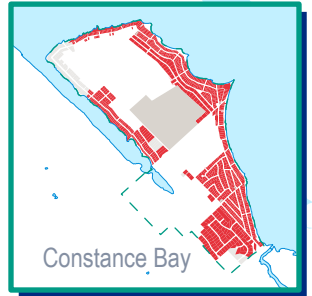
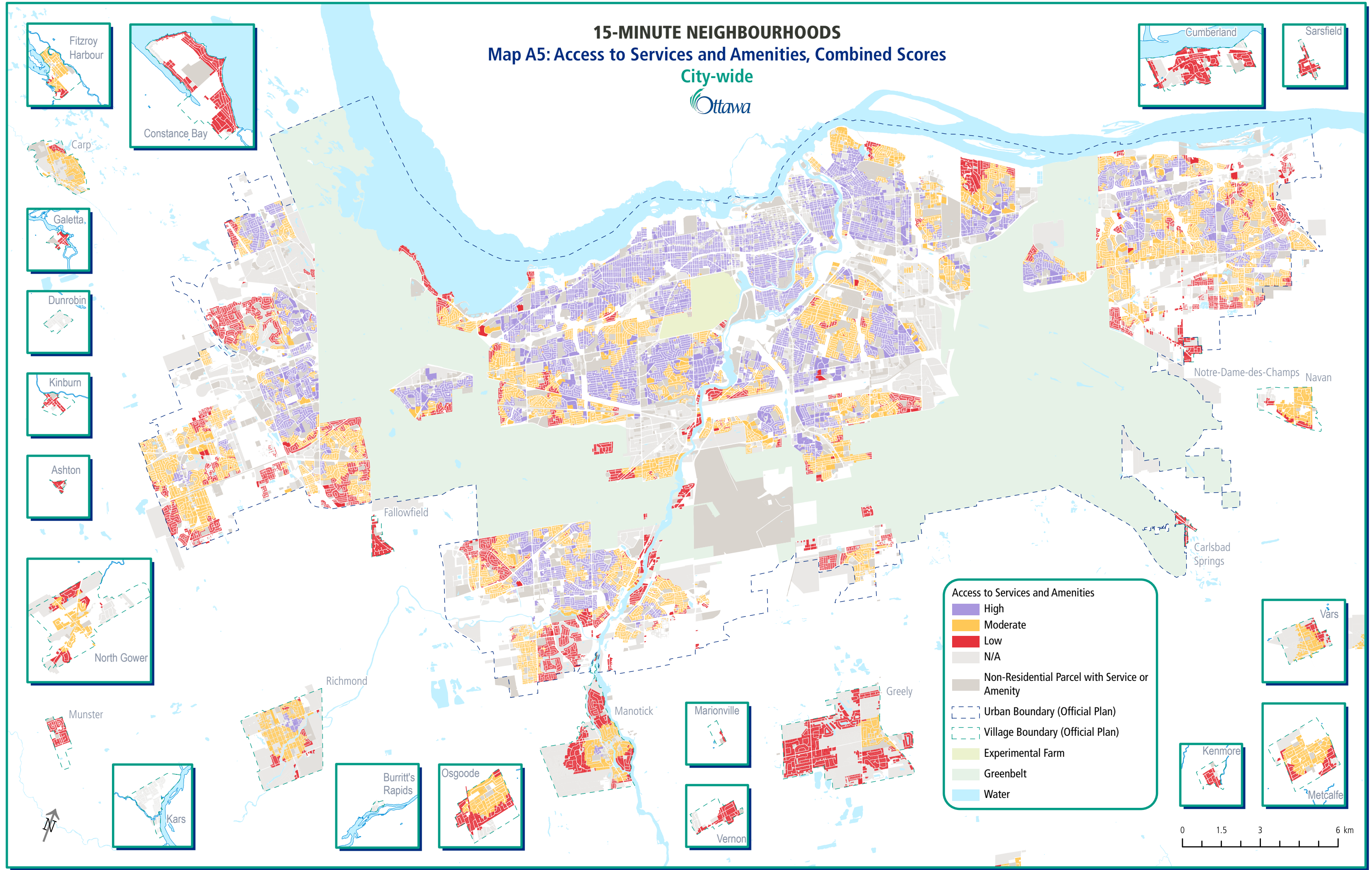


# 15-MINUTE NEIGHBOURHOODS

## Map A5: Access to Services and Amenities, Combined Scores

City-wide  

**Access to Services and Amenities**

- High
- Moderate
- Low
- N/A
- Non-Residential Parcel with Service or Amenity
- Urban Boundary (Official Plan)
- Village Boundary (Official Plan)
- Experimental Farm
- Greenbelt
- Water

