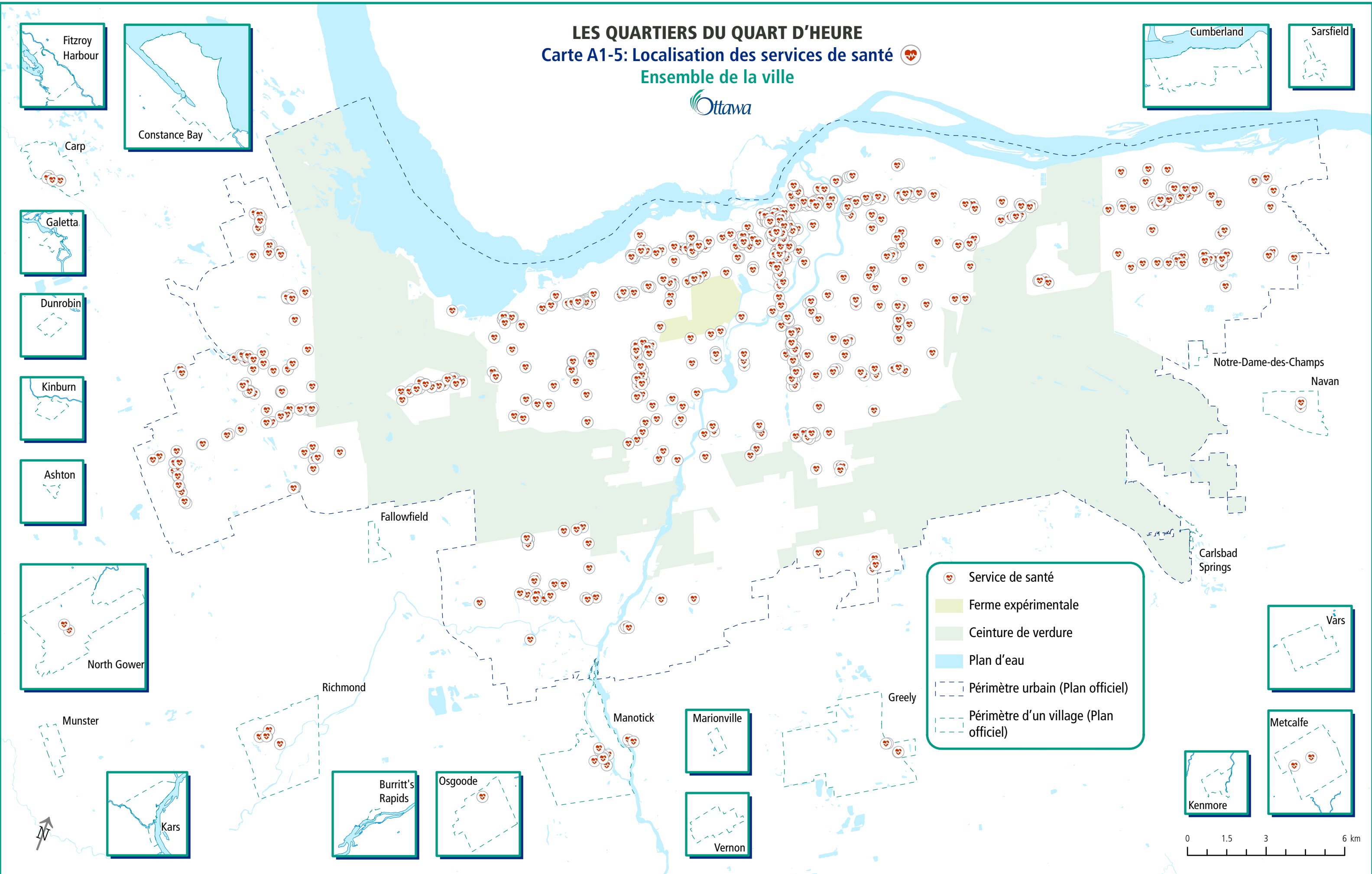

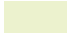
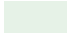
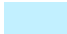




# LES QUARTIERS DU QUART D'HEURE

## Carte A1-5: Localisation des services de santé

### Ensemble de la ville



-  Service de santé
-  Ferme expérimentale
-  Ceinture de verdure
-  Plan d'eau
-  Périmètre urbain (Plan officiel)
-  Périmètre d'un village (Plan officiel)

