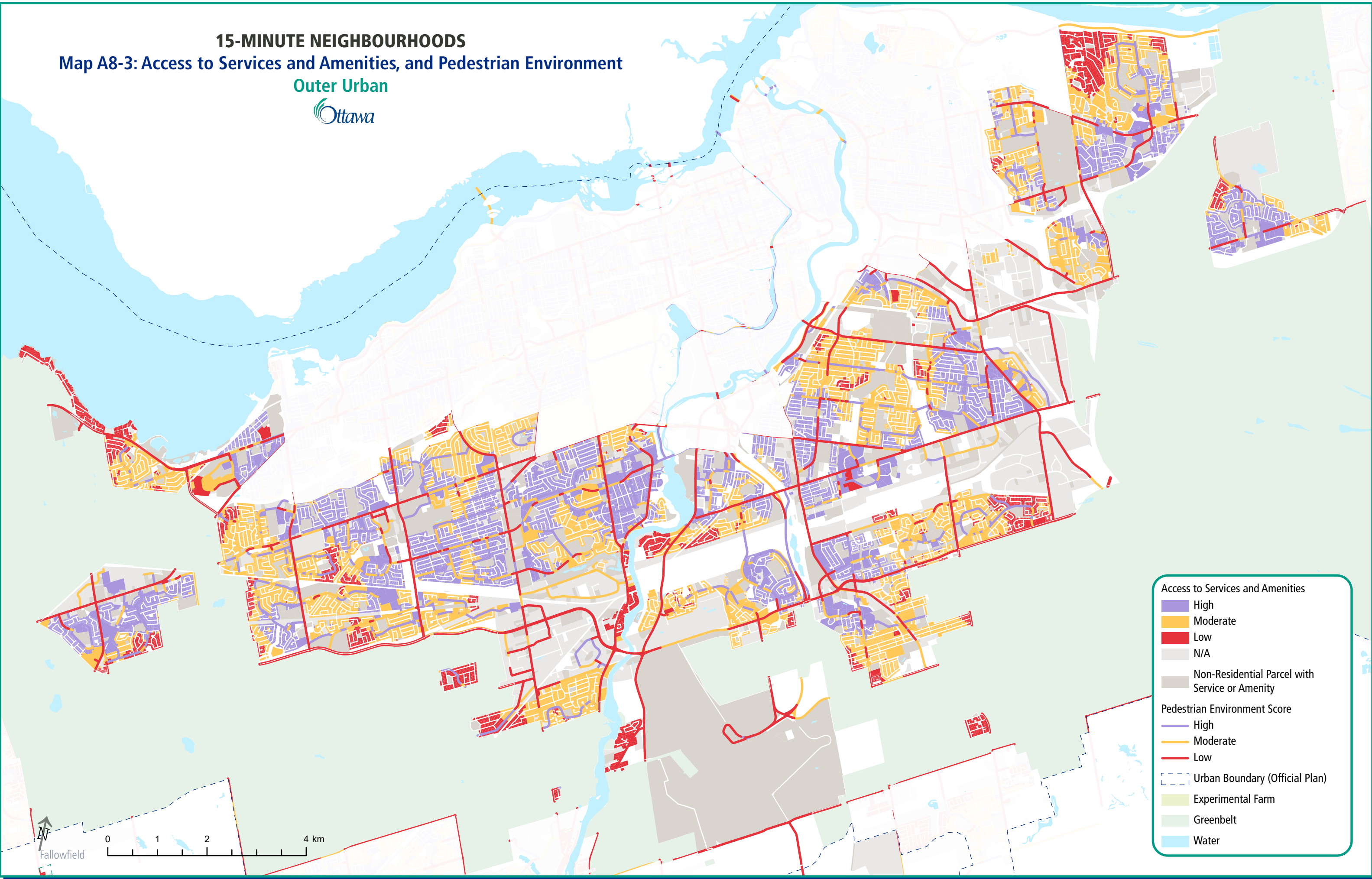


15-MINUTE NEIGHBOURHOODS
Map A8-3: Access to Services and Amenities, and Pedestrian Environment
Outer Urban



Access to Services and Amenities

- High
- Moderate
- Low
- N/A
- Non-Residential Parcel with Service or Amenity

Pedestrian Environment Score

- High
- Moderate
- Low
- Urban Boundary (Official Plan)
- Experimental Farm
- Greenbelt
- Water

