

City View Ditch Rehabilitation

Public information session
March 3, 2025

Land acknowledgement

We recognize that Ottawa is located on unceded territory of the Anishinabe Algonquin Nation.

We extend our respect to all First Nations, Inuit and Métis peoples for their valuable past and present contributions to this land.

We also recognize and respect the cultural diversity that First Nations, Inuit and Métis people bring to the City of Ottawa.





City View Ditch Rehabilitation

Introduction

Why are we here:

- To provide information on the **purpose, design, proposed timelines, and construction considerations** for the City View ditch rehabilitation project.

Who is in attendance and what is their role:

- Britney McGrath, City Project Manager - City of Ottawa
- Stephen Arends, P.Eng. Consultant Project Manager – Jp2g Consultants Inc.





City View Ditch Rehabilitation

Introduction

Format of the Public Information Session (PIS) progress:

- Presentation (Jp2g Consultants)
- Followed by Q and A (Jp2g and City of Ottawa)
- Note: This presentation is available on the website
 - ottawa.ca/CityViewDitch



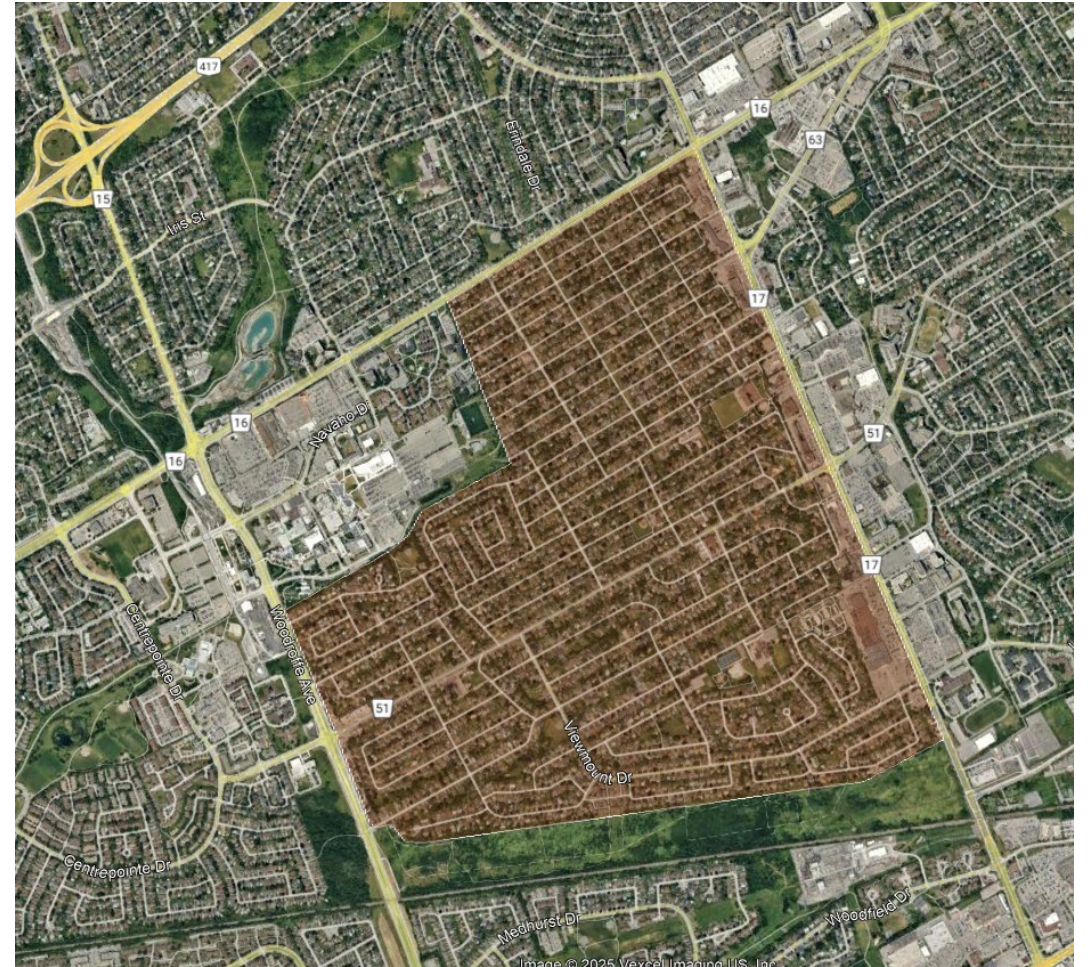


City View Ditch Rehabilitation

Background

City View is a residential neighbourhood constructed in the 1960s.

It has sanitary and water services, but drainage is achieved via overland flow/ditches that outlet to trunk storm sewers.





City View Ditch Rehabilitation

Background



The existing ditching is sporadic throughout the neighbourhood, with drainage issues resulting from:

- Ditch infills
- Sedimentation in ditches
- Lack of proper outlets for sump pumps





City View Ditch Rehabilitation

Previous flooding

- History of flooding mostly due to sanitary sewer backup.
- The storm event of September 4, 2004, caused significant flooding and led to a study of the area.
- Although the major source of flooding in 2004 was due to sanitary sewer backup, the resulting study identified drainage issues needing remediation





City View Ditch Rehabilitation

2006 Delcan study

The 2006 Delcan study focused on a trunk sanitary sewer solution but also proposed a combination of ditches and shallow storm sewers throughout the neighbourhood via a local improvement initiative (i.e. funded by homeowners).

- Provided best sump pump outlet solution.
- The community was not supportive of a homeowner funded local improvement to address sanitary sewer backups.





City View Ditch Rehabilitation

2006 Delcan study result

A combination of spot repairs and ditch rehabilitation was then recommended to improve conveyance of storm events.

Since then, some localized improvements were done, but the neighborhood requires a larger scale drainage solution to include overall approach to cleaning and re-opening ditches.





City View Ditch Rehabilitation

Existing issues

Existing issues that are driving this project include:

- Incohesive ditch/piping systems



- Lack of consistency and connectivity



- Private encroachments and private infilling of property frontage reducing capacity of the storm system



City View Ditch Rehabilitation

Existing issues continued

- Blocked or buried driveway culverts impeding drainage
- Inadequate driveway culvert sizes and extensions
- Poor condition road crossing culverts





City View Ditch Rehabilitation

Existing issues continued

- Lack of adequate outlets resulting in widespread ponding



- Intensification pressures within the neighbourhood are exacerbating the existing drainage issues due to further infills and increased runoff



City View Ditch Rehabilitation

2022 RCI study

The 2022 Robinson Consultants Inc (RCI) study was commissioned to further document existing conditions and identify an area wide approach.

The findings were circulated to the community through the City View Community Association to obtain feedback.





City View Ditch Rehabilitation

2022 RCI study continued

RCI identified remedial measures aimed at elevating the drainage concerns.

The measures included a phased approach with the construction sequence driven by available outlets. Generally, the phases progress from north to south.

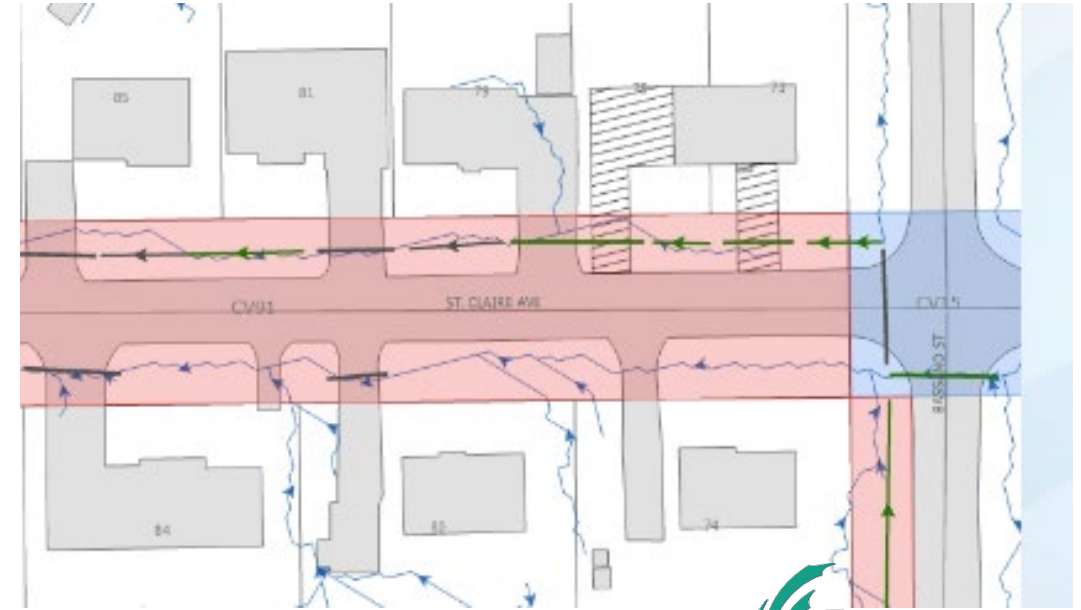
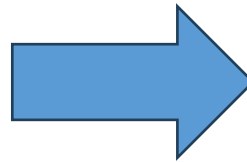
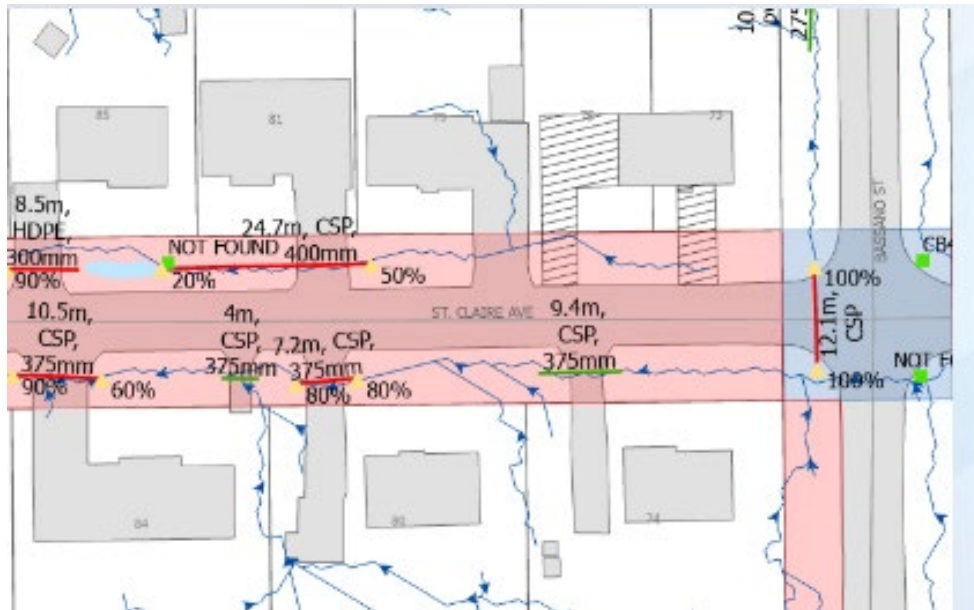




City View Ditch Rehabilitation

2022 RCI study continued

- RCI recommended a phased approach to re-establish a ditch network





City View Ditch Rehabilitation

2024 Jp2g detailed design

- In 2024, the City of Ottawa retained Jp2g Consultants Inc. to provide a detailed design to implement the recommendations of the RCI 2022 study
- The design is split into a multi-phased ditching and drainage improvements plan



Note: The phasing/schedule is subject to change due to budget availability and priority of locations

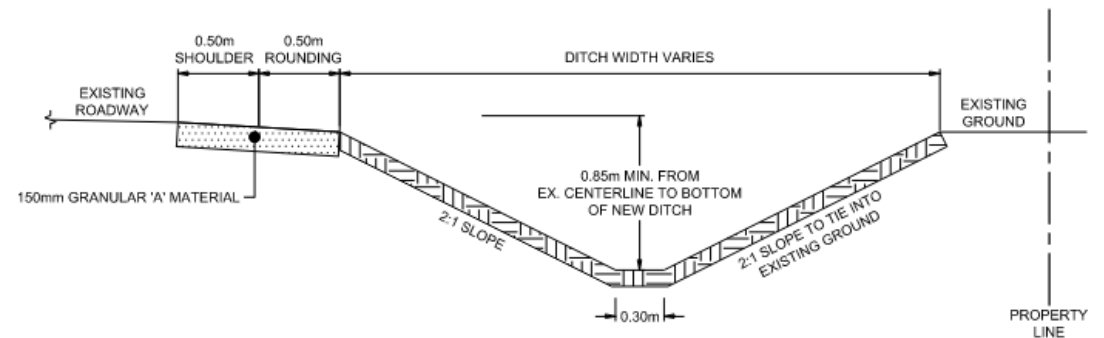


City View Ditch Rehabilitation

2024 Jp2g detailed design

The design includes ditching and drainage improvements through the following:

- Ditching
- Culverts (driveway and road crossing)
- Isolated sewer network improvements
- Establishing drainage outlets





City View Ditch Rehabilitation Implementation plan strategy

How was the plan developed and why priority areas?

- Remove bottle necks
- Establish outlets
- Establish connectivity
- Consolidating construction work within phased work zones and mitigating resident disruption

In general, the phasing is set to establish the outlets and conveyance network first.





City View Ditch Rehabilitation

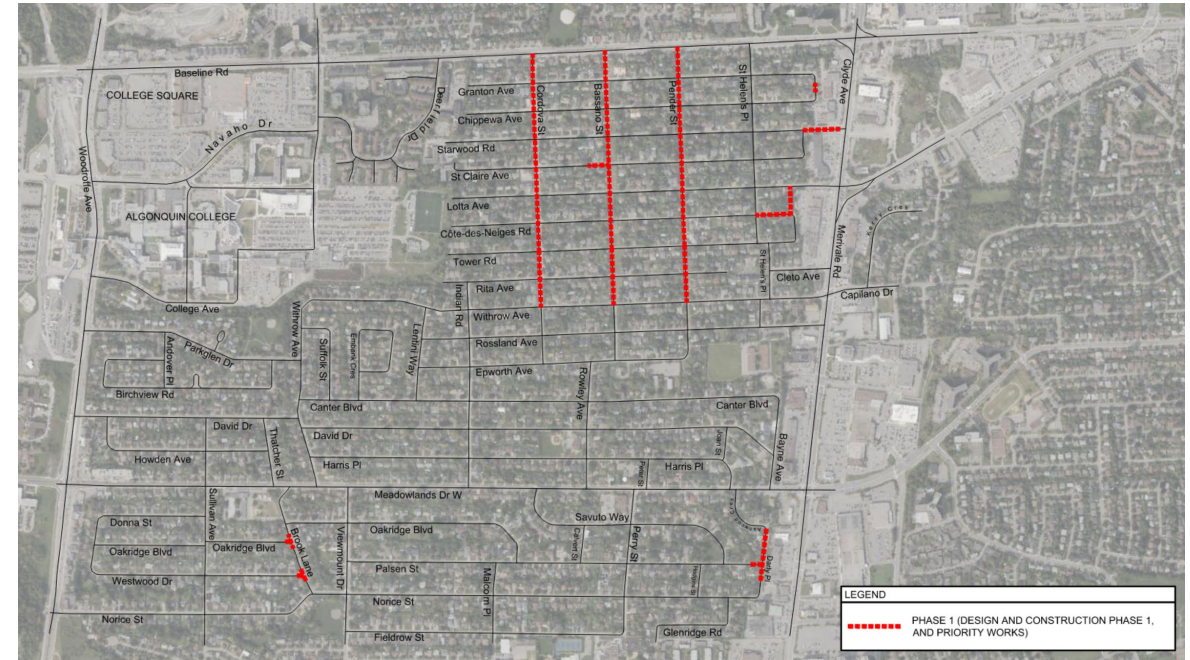
Timelines & implementation plan

Phase 1

Design: spring 2024 to spring 2025

Construction: summer - fall 2025

- Cordova Street from Baseline Road to Withrow Avenue
- Bassano Street from Baseline Road to Withrow Avenue
- Pender Street from Baseline Road to Withrow Avenue
- Priority local areas (*Darly Place, Brook Lane, Côte-des-Neiges Road, Starwood Road, Chippewa Avenue*)





City View Ditch Rehabilitation

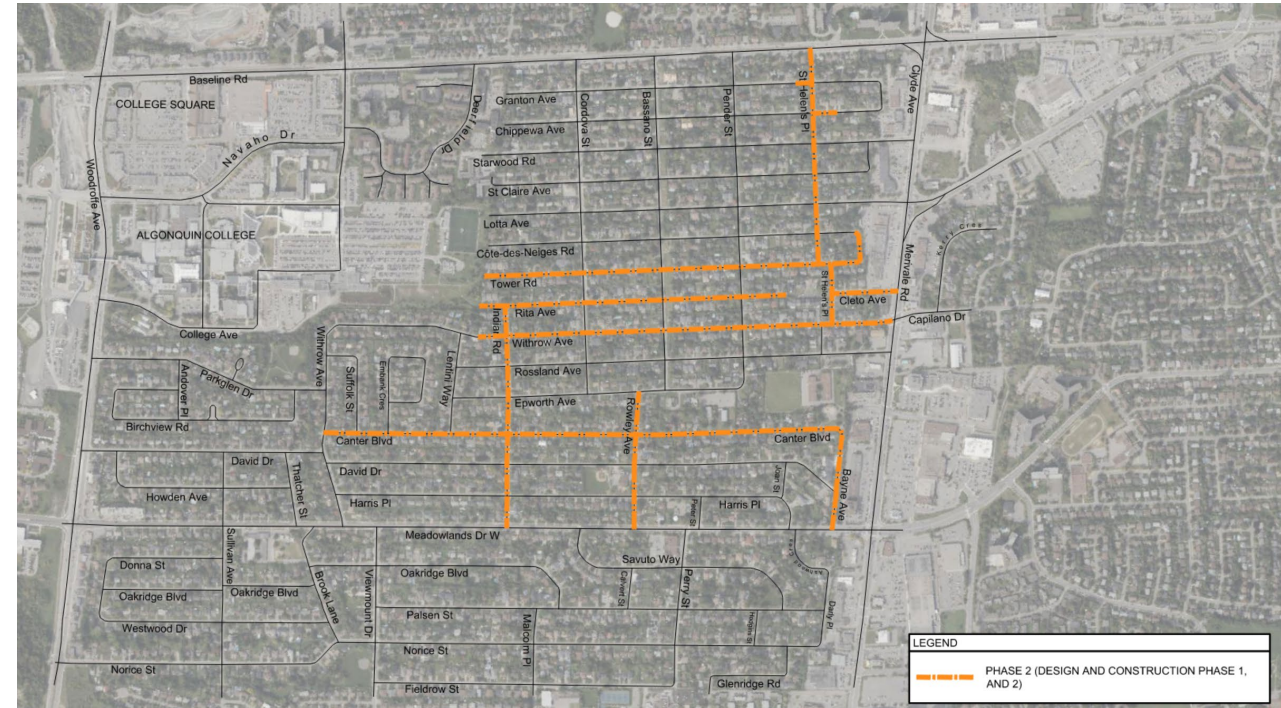
Timelines & implementation plan

Phase 2

Planned design: 2025

Planned construction: 2026

- Bayne Avenue from Canter Boulevard to Meadowlands Drive W
- Canter Boulevard from Withrow Avenue to Bayne Avenue
- Cleto Avenue from St. Helen's Place to Merivale Road
- Indian Road from Rita Avenue to Meadowlands Drive
- Rita Avenue from Algonquin College to 115m east of Pender Street
- Rowley Avenue from Epworth Avenue to Meadowlands Drive W
- St. Helen's Place from Baseline Road to Withrow Avenue
- Tower Road from Algonquin College to Côte-des-Neiges Road
- Withrow Avenue from west of Indian Road to Merivale Road





City View Ditch Rehabilitation

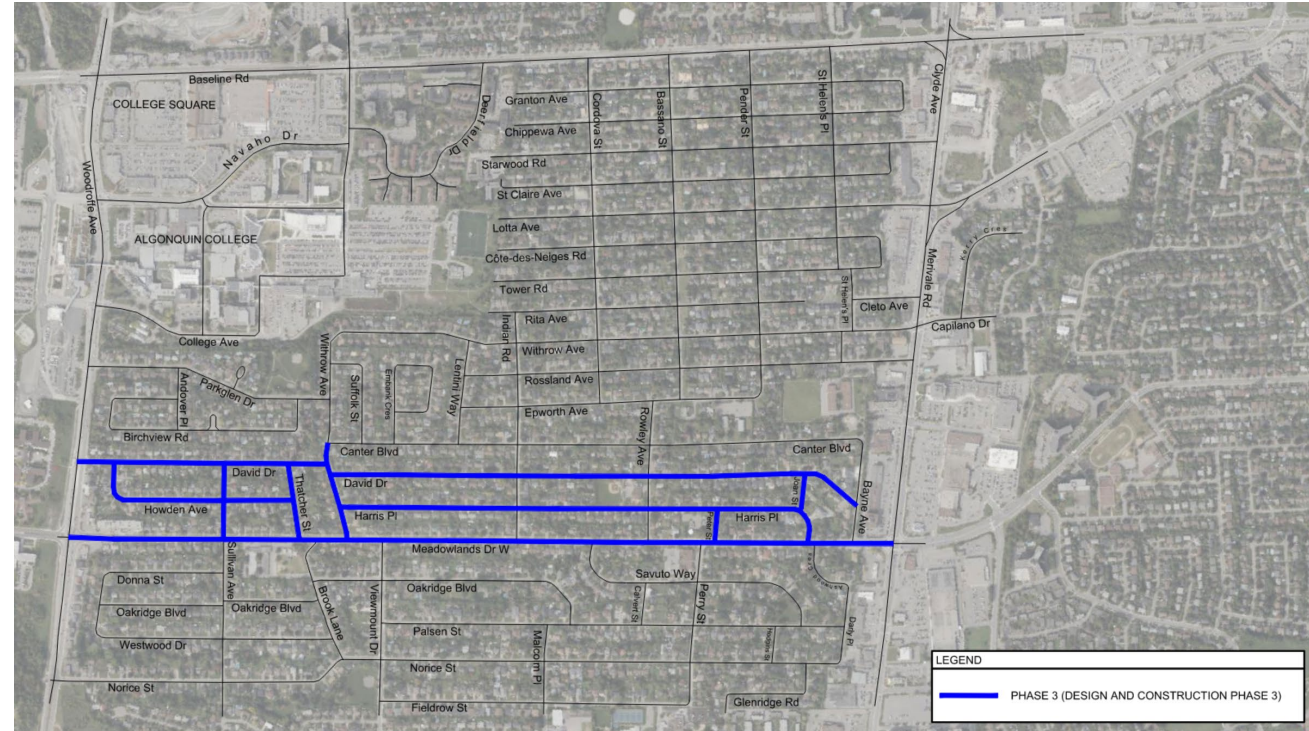
Timelines & implementation plan

Phase 3

Estimated design: 2025/2026

Estimated construction: 2026/2027

- David Drive from Woodroffe Avenue to Bayne Avenue
- Harris Place from Withrow Avenue to Meadowlands Drive W
- Howden Avenue from David Drive to Thatcher Street
- Joan Street from David Drive to Harris Place
- Meadowlands Drive W from Woodroffe Avenue to Merivale Road
- Peter Street from Harris Place to Meadowlands Drive W
- Sullivan Avenue from David Drive to Meadowlands Drive W
- Thatcher Street from David Drive to Meadowlands Drive W
- Withrow Avenue from Canter Boulevard to Meadowlands Drive W





City View Ditch Rehabilitation

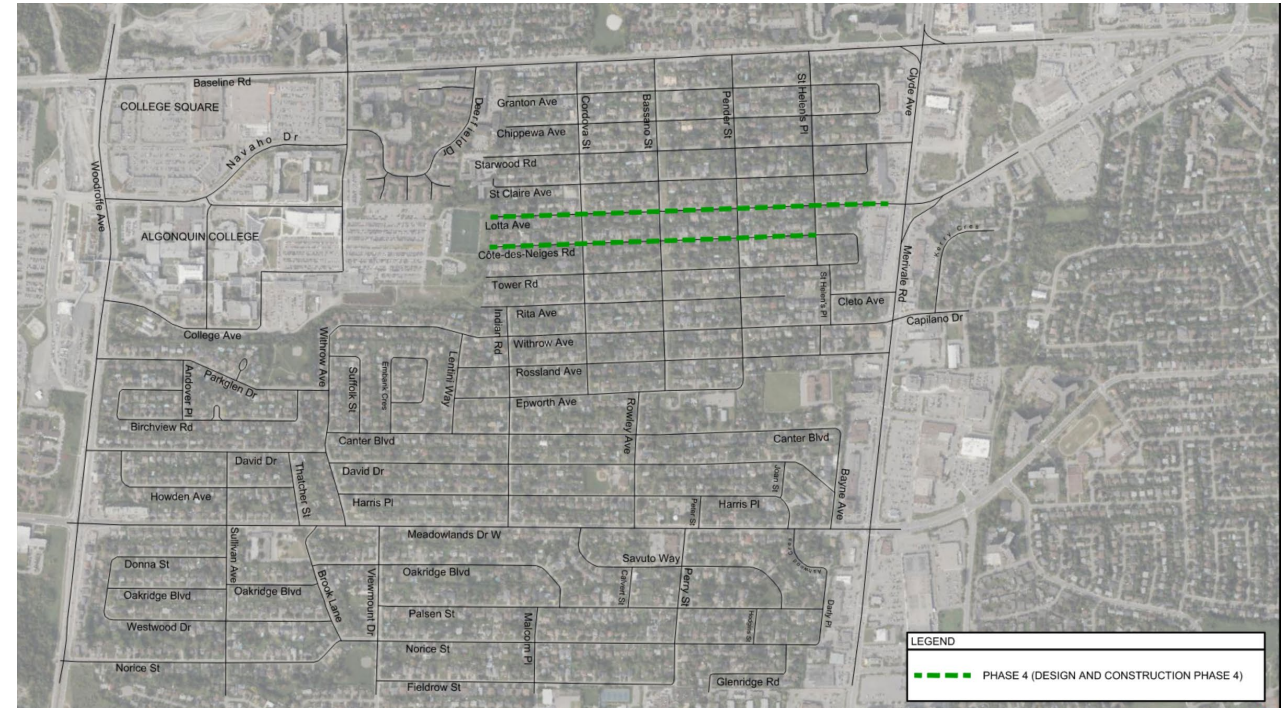
Timelines & implementation plan

Phase 4

Estimated design: 2026/2027

Estimated construction:
2027/2028

- Côte-des-Neiges Road from Algonquin College to St. Helen's Place
- Lotta Avenue from Algonquin College to Clyde Avenue





City View Ditch Rehabilitation Timelines & implementation plan

Phase 5

Estimated design: 2027/2028

Estimated construction: 2028/2029

- Bassano Street from Withrow Avenue to Epworth Avenue
- Cordova Street from Withrow Avenue to Epworth Avenue
- Epworth Avenue from Lentini Way to Pender Street
- Lentini Way from Withrow Avenue to Canter Boulevard
- Pender Street from Withrow Avenue to Epworth Avenue
- Rossland Avenue from Lentini Way to Merivale Road
- St. Helen's Place from Withrow Avenue to Rossland Avenue





City View Ditch Rehabilitation

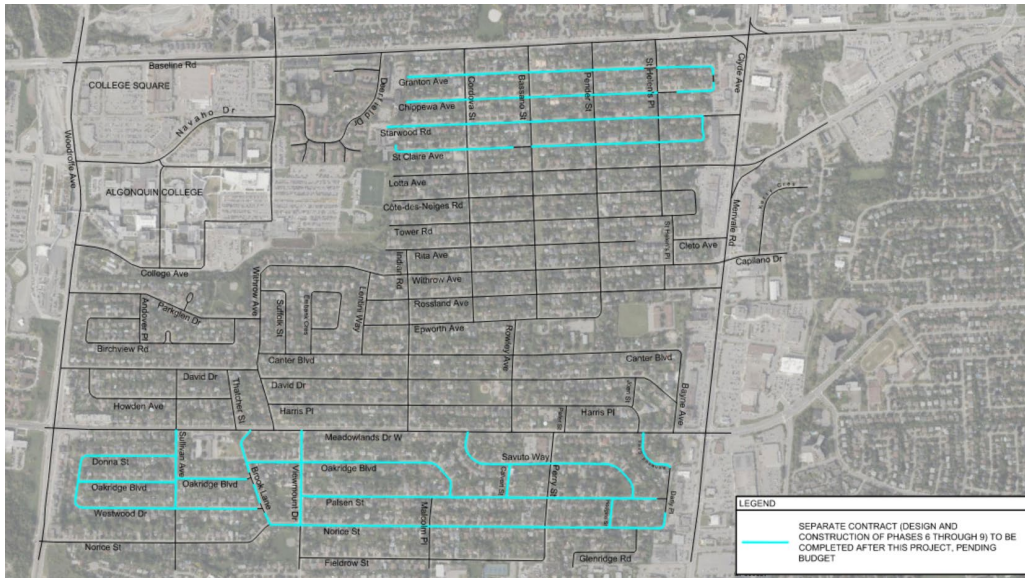
Timelines & implementation plan

Future phases 6 to 9

Design: TBD

Construction: TBD

- Ashwood Crescent from Meadowlands Drive W to Darly Place
- Brook Lane from Meadowlands Drive W to Norice Street
- Calvert Street from Savuto Way to Palsen Street
- Chippewa Avenue from west of Cordova Street to Granton Avenue
- Donna Street from Sullivan Avenue to Westwood Drive
- Granton Avenue from west of Cordova Street to Chippewa Avenue
- Hodgins Street from Palsen Street to Norice Street
- Norice Street from Brook Lane to Darly Place
- Oakridge Boulevard from Donna Street to Palsen Street
- Palsen Street from Viewmount Drive to Darly Place
- Savuto Way from Meadowlands Drive W to Palsen Street
- St. Claire Avenue from west of Cordova Street to Starwood Road
- Starwood Road from west of Cordova Street to St. Claire Avenue
- Sullivan Avenue from Meadowlands Drive W to Westwood Drive
- Viewmount Drive from Meadowlands Drive W to Norice Street
- Westwood Drive from Donna Street to Brook Lane





City View Ditch Rehabilitation

Construction expectations - local impacts

How does this impact you?

- Intermittent road closures/detours
- Intermittent driveway access
 - Driveway access closures will be worked out with the contractor a minimum of 24 hours in advance
- Noise/Dust
- Grading tie ins to ditches and driveway culvert replacements
- Landscaping removals and reinstatements where possible (trees, hedges, gardens)
- Removal or adjustment of past Right-of-Way encroachments





City View Ditch Rehabilitation

Construction expectations - local impacts

How to stay informed and prepare:

- Review website and FAQ's
 - ottawa.ca/CityViewDitch
- Reach out to the project team if you have encroachments into the right of way which may be impacted by the proposed work. These include:
 - Shrubs, trees or gardens
 - Irrigation systems
 - Decorative features
 - Fences





City View Ditch Rehabilitation

Construction expectations - local impacts

Frequently asked questions:

- **Will work take place on my property?**

Work is anticipated to be completed solely on the city owned portion of property. If work is required beyond these limits, the project team will reach out to coordinate appropriate agreements.

- **Will the City replace the whole driveway?**

No, driveway reinstatements will be limited to only the disrupted areas. This will result in a pavement joint generally at the property line.





City View Ditch Rehabilitation

Construction expectations - local impacts

Frequently asked questions:

- **My tree is close to the property line, what will happen to it?**

Trees on private property are not anticipated to be removed and will be protected as much as possible.

Trees within the ROW may be affected by regrading of the ditches. The City's Forestry group is being consulted to provide input/ direction.

Where possible, alternate drainage solutions will be reviewed to resolve conflicts with private trees. Some pruning may be required at the time of construction but will be completed by the contractor arborist.





City View Ditch Rehabilitation

Information update program

During the design process:

- Phased public information sessions dedicated to affected civic addresses:
 - Phase 1 – spring 2025
 - Phase 2 – late 2025
 - Phase 3-5 – to be scheduled as work progresses pending funding
- Website updates/e-newsletters





City View Ditch Rehabilitation

Information update program

Communication resources available during construction

- Website updates
- E-Newsletter communications (sign up at ottawa.ca/esubscriptions)
- City of Ottawa mailed letter to affected civic addresses
- On-site staff (Inspector) during construction
- City of Ottawa Project Manager
- Jp2g Consultants' Project Manager
- Construction signage



Questions?





Contact information

Stay up to date on the project by following the project website:
ottawa.ca/CityViewDitch

And signing up for project email updates:
ottawa.ca/esubscriptions

City Project Manager:

Britney McGrath, C.E.T.

Project Manager

Design and Construction - Municipal, City of Ottawa

100 Constellation Drive, Ottawa ON K2G 6J8

Email: cityview@ottawa.ca

