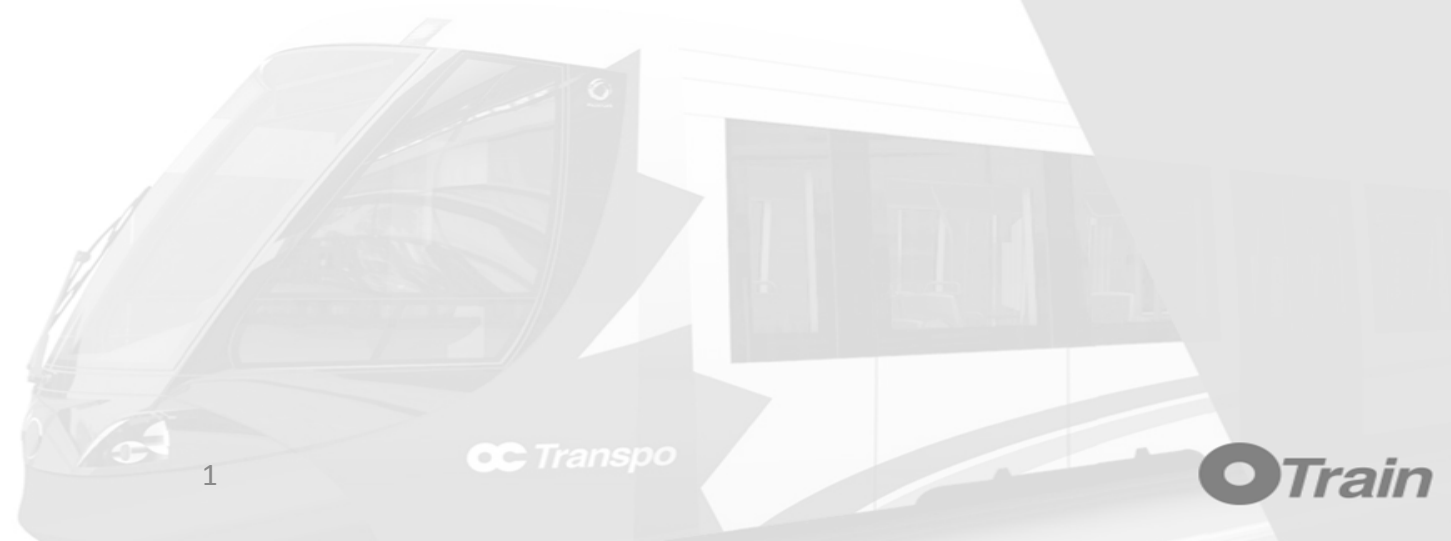




1.3 Conformance Events

TNext



1.3 Conformance Events

Events – TNext



Section: <i>[e.g.: Section 1.2 IMS]</i>	2.4 (1) (b)
Title: <i>[Title of Event]</i>	TN-U002: Bird Friendly
Location in Proposal: <i>[section, page #]</i>	Various drawings and renderings
Classification: <i>[Non-Conformant, Unobservable, Exceedances...]</i>	Unobservable
Description: <i>[insert description as required]</i>	Unobservable as it relates to the implementation of bird friendly “protection measures” being utilized on glazing surfaces that exceed 2m ² as required by Schedule 15-2, Part 4 Clause 1.3 (c)(ii).
Scope Modification Description <i>[in the case of a Non-Conformance, what is the scope required to accomplish Conformance]</i>	To incorporate bird friendly measures the design would need to incorporate a mullion pattern; a frit pattern on the glazing; or utilize special coatings in all expanses of glass exceeding 2m ² to create a visual marker allowing birds to identify the facilities as solid objects. This is applicable to fare control building enclosures, shelters, stair enclosures windscreens etc.

1.3 Conformance Events

Events – TNext



Section: <i>[e.g.: Section 1.2 IMS]</i>	2.4 (1) (b)
Title: <i>[Title of Event]</i>	TN-NC009: Uplands Station
Location in Proposal: <i>[section, page #]</i>	NOR-S3UL-44DK-2001, NOR-S3UL-44DK-3001
Classification: <i>[Non-Conformant, Unobservable, Exceedances...]</i>	Non-Conformant
Description: <i>[insert description as required]</i>	It is not evident the Proponent has provided a 6.0m wide non-fare paid connection traversing the alignment as required by Schedule 15-2, Part 4 Clause 3.12(d). The information provided is contradictory in several instances the Proponent has indicated this as a future element.
Scope Modification Description <i>[in the case of a Non-Conformance, what is the scope required to accomplish Conformance]</i>	Proponent is required to design the station structure to include the non fare paid pedestrian underpass. As this connection has been noted as future, significant redesign (reconfiguration) is not required, however, the Proponent shall confirm the structure is included with the initial build as constructing at a later date most likely would result in service disruption.

1.3 Conformance Events

Events – TNext



Section: <i>[e.g.: Section 1.2 IMS]</i>	2.5 (1) (a)
Title: <i>[Title of Event]</i>	TN-U003: MOW on MSF Site
Location in Proposal: <i>[section, page #]</i>	Schedule 15-2 1.1(c)(i); Schedule 15-3, 4.2.1
Classification: <i>[Non-Conformant, Unobservable, Exceedances...]</i>	Unobservable
Description: <i>[insert description as required]</i>	<p>Maintenance of way facilities were not observed on the MSF site plan drawings or addressed in the written narrative. Schedule 15-2, Part 5, Clause 1.1(c)(i) and Schedule 15-3, 4.2.1 requires maintenance of way function to be located at the MSF.</p> <p>The requirements for MOW facilities within the Walkley Yard are vague and not enforceable. We would question whether “ongoing” means current MOW activities which are currently excluded from their requirements and “adequately” is subjective. Adequate could be interpreted minimally as providing some area in the yard for storage.</p>
Scope Modification Description <i>[in the case of a Non-Conformance, what is the scope required to accomplish Conformance]</i>	

1.3 Conformance Events

Events – TNext



Section: <i>[e.g.: Section 1.2 IMS]</i>	2.5 (1) (e) (ii)
Title: <i>[Title of Event]</i>	TN-U004: MSF Operator Crossing [supersedes TN-NC005]
Location in Proposal: <i>[section, page #]</i>	Drawings: NOR SWF 41DK 4001 and 4002
Classification: <i>[Non-Conformant, Unobservable, Exceedances...]</i>	Unobservable
Description: <i>[insert description as required]</i>	The legend indicates that the yellow hatching is asphalt, paved crossings are provided. The exact details of the crossing are “unobservable” with regard to paved to TOR, however, the requirement to provide Track crossings to each Yard Track appears to be conformant.
Scope Modification Description <i>[in the case of a Non-Conformance, what is the scope required to accomplish Conformance]</i>	

1.3 Conformance Events

Events – TNext



Section: <i>[e.g.: Section 1.2 IMS]</i>	2.5 (1) (n) (i)
Title: <i>[Title of Event]</i>	TN-NC010: Generator Capacity
Location in Proposal: <i>[section, page #]</i>	Pages 2.5-26 - 27
Classification: <i>[Non-Conformant, Unobservable, Exceedances...]</i>	Non-Conformant
Description: <i>[insert description as required]</i>	<p>Provided information indicates the emergency generator and equipment lacks sufficient capacity to serve the electrical demand load of the and 25% capacity for future growth as required by Schedule 15-2, Part 5, Clause 6.4(e)(i).</p>
Scope Modification Description <i>[in the case of a Non-Conformance, what is the scope required to accomplish Conformance]</i>	<p>The Proponent is required to redesign the emergency power system to include the entire facility load plus 25% capacity for future growth. In addition to a larger generator, sizing the emergency power system to meet the requirements of Clause 6.4(e)(i) may result in larger electrical feeders and require the proponent to enlarge electrical service room .</p>

1.3 Conformance Events

Events – TNext

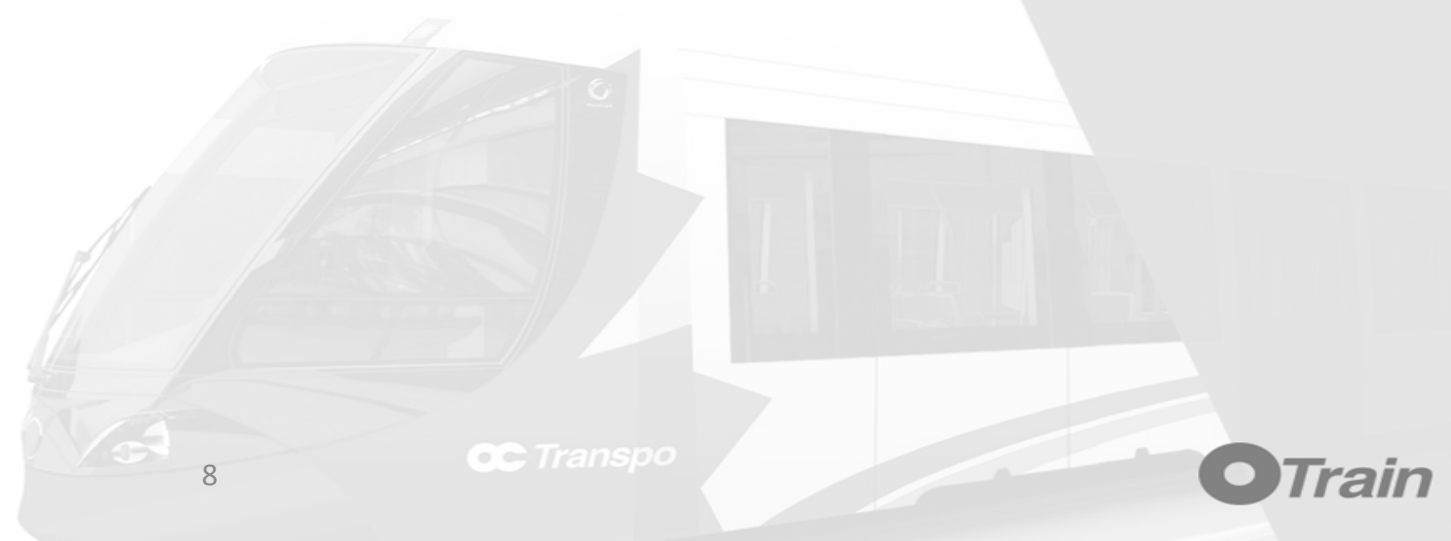


Section: <i>[e.g.: Section 1.2 IMS]</i>	4.3 (2)
Title: <i>[Title of Event]</i>	TE-U005: New Vehicle Fleet
Location in Proposal: <i>[section, page #]</i>	4.3-14 to 4.3-16
Classification: <i>[Non-Conformant, Unobservable, Exceedances...]</i>	Unobservable
Description: <i>[insert description as required]</i>	Did not identify Revenue Vehicles in a lifecycle replacement/refurbishment work schedule
Scope Modification Description <i>[in the case of a Non-Conformance, what is the scope required to accomplish Conformance]</i>	Require life cycle schedule to be updated and ensure life cycle costs against Revenue Vehicles are included in the financial model for the life cycle component.



2.3 Conformance Events

TLink



2.3 Conformance Events

Events – TLink



Section: <i>[e.g.: Section 1.2 IMS]</i>	2.4 (1) (b)
Title: <i>[Title of Event]</i>	TL-U002: Bird Friendly
Location in Proposal: <i>[section, page #]</i>	Various drawings and renderings
Classification: <i>[Non-Conformant, Unobservable, Exceedances...]</i>	Unobservable
Description: <i>[insert description as required]</i>	Unobservable as it relates to the implementation of bird friendly “protection measures” being utilized on glazing surfaces that exceed 2m ² as required by Schedule 15-2, Part 4 Clause 1.3 (c)(ii).
Scope Modification Description <i>[in the case of a Non-Conformance, what is the scope required to accomplish Conformance]</i>	To incorporate bird friendly measures the design would need to incorporate a mullion pattern; a frit pattern on the glazing; or utilize special coatings in all expanses of glass exceeding 2m ² to create a visual marker allowing birds to identify the facilities as solid objects. This is applicable to fare control building enclosures, shelters, stair enclosures windscreens etc.

2.3 Conformance Events

Events – TLink



Section: <i>[e.g.: Section 1.2 IMS]</i>	2.5 (1) (a)
Title: <i>[Title of Event]</i>	TL-U003: MOW on MSF Site
Location in Proposal: <i>[section, page #]</i>	p 156 and 157; dwgs 200-A-011 and 200-A-012
Classification: <i>[Non-Conformant, Unobservable, Exceedances...]</i>	Unobservable
Description: <i>[insert description as required]</i>	<p>The proponent provides a small MOW room in the M&A facility, however maintenance of way facilities are not observed on the MSF site as required by Schedule 15-2, Part 5, Clause 1.1(c)(i)</p> <p>The requirements for MOW facilities within the Walkley Yard are vague and not enforceable. We would question whether “ongoing” means current MOW activities which are currently excluded from their requirements and “adequately” is subjective. Adequate could be interpreted minimally as providing some area in the yard for storage</p>
Scope Modification Description <i>[in the case of a Non-Conformance, what is the scope required to accomplish Conformance]</i>	

2.3 Conformance Events

Events – TLink



Section: <i>[e.g.: Section 1.2 IMS]</i>	2.5 (1) (d)
Title: <i>[Title of Event]</i>	TL-NC002: City Driver M&A Drop Off
Location in Proposal: <i>[section, page #]</i>	NC: Access to trains, p 161 165, & 166
Classification: <i>[Non-Conformant, Unobservable, Exceedances...]</i>	Non-Conformant
Description: <i>[insert description as required]</i>	<p>The handover of the train within the Inspection, Fueling and Sanding Building can be considered non-conformant with respect to 15-2, Part 5, 1.1, f as it would require the driver to wear PPE as they are inside a Maintenance Building.</p> <p>The exact path of a driver back to the Administration area is unclear and therefore should be considered unobservable. The requirement that the handover point be “proximate and convenient” to the Administration building is subjective and should be considered conformant.</p>
Scope Modification Description <i>[in the case of a Non-Conformance, what is the scope required to accomplish Conformance]</i>	Site design will need to be reanalyzed and redesigned to consider a hand-back location that requires the operators to cross storage tracks only without crossing lead tracks when returning to the M&A facility and where hand-back does not take place within a maintenance building.

2.3 Conformance Events

Events – TLink

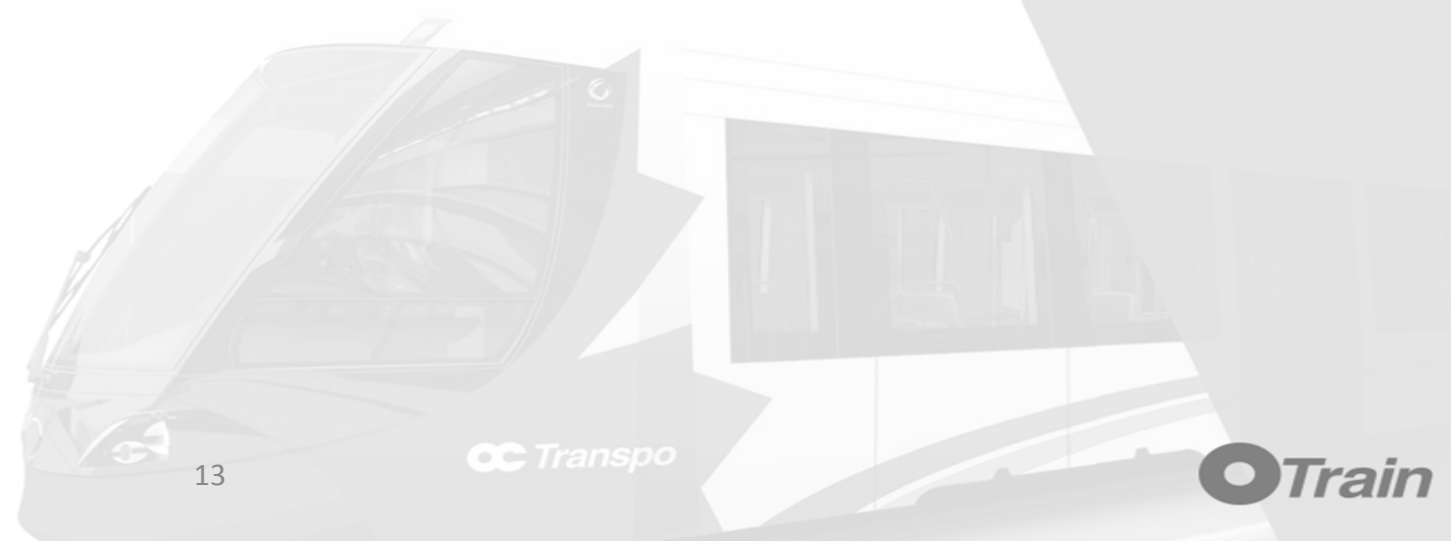


Section: <i>[e.g.: Section 1.2 IMS]</i>	4.3 (2)
Title: <i>[Title of Event]</i>	TE-U004: New Vehicle Fleet
Location in Proposal: <i>[section, page #]</i>	
Classification: <i>[Non-Conformant, Unobservable, Exceedances...]</i>	Unobservable
Description: <i>[insert description as required]</i>	Did not identify Revenue Vehicles in a lifecycle replacement/refurbishment work schedule
Scope Modification Description <i>[in the case of a Non-Conformance, what is the scope required to accomplish Conformance]</i>	Require life cycle schedule to be updated and ensure life cycle costs against Revenue Vehicles are included in the financial model for the life cycle component.



3.3 Conformance Events

TEA



3.3 Conformance Events

Events – TEA



Section: <i>[e.g.: Section 1.2 IMS]</i>	2.5 (1) (a)
Title: <i>[Title of Event]</i>	TE-U001: MOW on MSF Site
Location in Proposal: <i>[section, page #]</i>	Schedule 15-2 1.1(c)(i); Schedule 15-3, 4.2.1
Classification: <i>[Non-Conformant, Unobservable, Exceedances...]</i>	Unobservable
Description: <i>[insert description as required]</i>	<p>Maintenance of way facilities were not observed on the MSF site plan drawings or addressed in the written narrative. Schedule 15-2, Part 5, Clause 1.1(c)(i) and Schedule 15-3, 4.2.1 requires maintenance of way function to be located at the MSF.</p> <p>The requirements for MOW facilities within the Walkley Yard are vague and not enforceable. We would question whether “ongoing” means current MOW activities which are currently excluded from their requirements and “adequately” is subjective. Adequate could be interpreted minimally as providing some area in the yard for storage</p>
Scope Modification Description <i>[in the case of a Non-Conformance, what is the scope required to accomplish Conformance]</i>	

3.3 Conformance Events

Events – TEA



Section: <i>[e.g.: Section 1.2 IMS]</i>	2.4 (1) (b)
Title: <i>[Title of Event]</i>	TE-U002: Bird Friendly
Location in Proposal: <i>[section, page #]</i>	Various drawings and renderings
Classification: <i>[Non-Conformant, Unobservable, Exceedances...]</i>	Unobservable
Description: <i>[insert description as required]</i>	Unobservable as it relates to the implementation of bird friendly “protection measures” being utilized on glazing surfaces that exceed 2m ² as required by Schedule 15-2, Part 4 Clause 1.3 (c)(ii).
Scope Modification Description <i>[in the case of a Non-Conformance, what is the scope required to accomplish Conformance]</i>	To incorporate bird friendly measures the design would need to incorporate a mullion pattern; a frit pattern on the glazing; or utilize special coatings in all expanses of glass exceeding 2m ² to create a visual marker allowing birds to identify the facilities as solid objects. This is applicable to fare control building enclosures, shelters, stair enclosures windscreens etc.

3.3 Conformance Events

Events – TEA



Section: <i>[e.g.: Section 1.2 IMS]</i>	2.5 (1) (n) (i) (A)
Title: <i>[Title of Event]</i>	TE-NC009: Back-up Generator Comments
Location in Proposal: <i>[section, page #]</i>	Narrative 2.5.1(n)
Classification: <i>[Non-Conformant, Unobservable, Exceedances...]</i>	Non-Conformance
Description: <i>[insert description as required]</i>	<p>Provided information indicates the emergency generator and equipment lacks sufficient capacity to serve the electrical demand load of the and 25% capacity for future growth as required by Schedule 15-2, Part 5, Clause 6.4(e)(i).</p>
Scope Modification Description <i>[in the case of a Non-Conformance, what is the scope required to accomplish Conformance]</i>	<p>The Proponent is required to redesign the emergency power system to include the entire facility load plus 25% capacity for future growth. In addition to a larger generator, sizing the emergency power system to meet the requirements of Clause 6.4(e)(i) may result in larger electrical feeders and require the proponent to enlarge electrical service room .</p>

3.3 Conformance Events

Events – TEA



Section: <i>[e.g.: Section 1.2 IMS]</i>	4.3 (2)
Title: <i>[Title of Event]</i>	TE-U003: New Vehicle Fleet
Location in Proposal: <i>[section, page #]</i>	19 of 19 and attachment 4.2-1
Classification: <i>[Non-Conformant, Unobservable, Exceedances...]</i>	Unobservable
Description: <i>[insert description as required]</i>	Did not identify Revenue Vehicles in a lifecycle replacement/refurbishment work schedule.
Scope Modification Description <i>[in the case of a Non-Conformance, what is the scope required to accomplish Conformance]</i>	Require life cycle schedule to be updated and ensure life cycle costs against Revenue Vehicles are included in the financial model for the life cycle component.