

Baseline/Greenbank Transit Priority Intersection Improvements

Public information session

Wednesday, October 30, 2024



Baseline/Greenbank Transit Priority Intersection Improvements

Land acknowledgement

We recognize that Ottawa is located on unceded territory of the Anishinabe Algonquin Nation.

We extend our respect to all First Nations, Inuit and Métis peoples for their valuable past and present contributions to this land.

We also recognize and respect the cultural diversity that First Nations, Inuit and Métis people bring to the City of Ottawa.

Baseline/Greenbank Transit Priority Intersection Improvements

Welcome

Welcome to the public information session to discuss the proposed infrastructure improvement project at the Greenbank Road and Baseline Road intersection. The purpose of this public information session is to present the final design for the project, to present the general schedule and plans for the construction period, and to receive feedback.

Key information being presented as part of this update includes:

- Final street designs;
- Construction-period plans to manage transportation and overall construction period disruption;
- Construction schedule; and
- Continued stakeholder involvement opportunities.

Your feedback is important to the success of this project and will help the City implement the Baseline/Greenbank Transit Priority Intersection Improvements. Please review the information presented and send us your comments and feedback via the [online form](#) or to the City Project Manager, **Chris Ogilvie**, at chris.ogilvie@ottawa.ca.

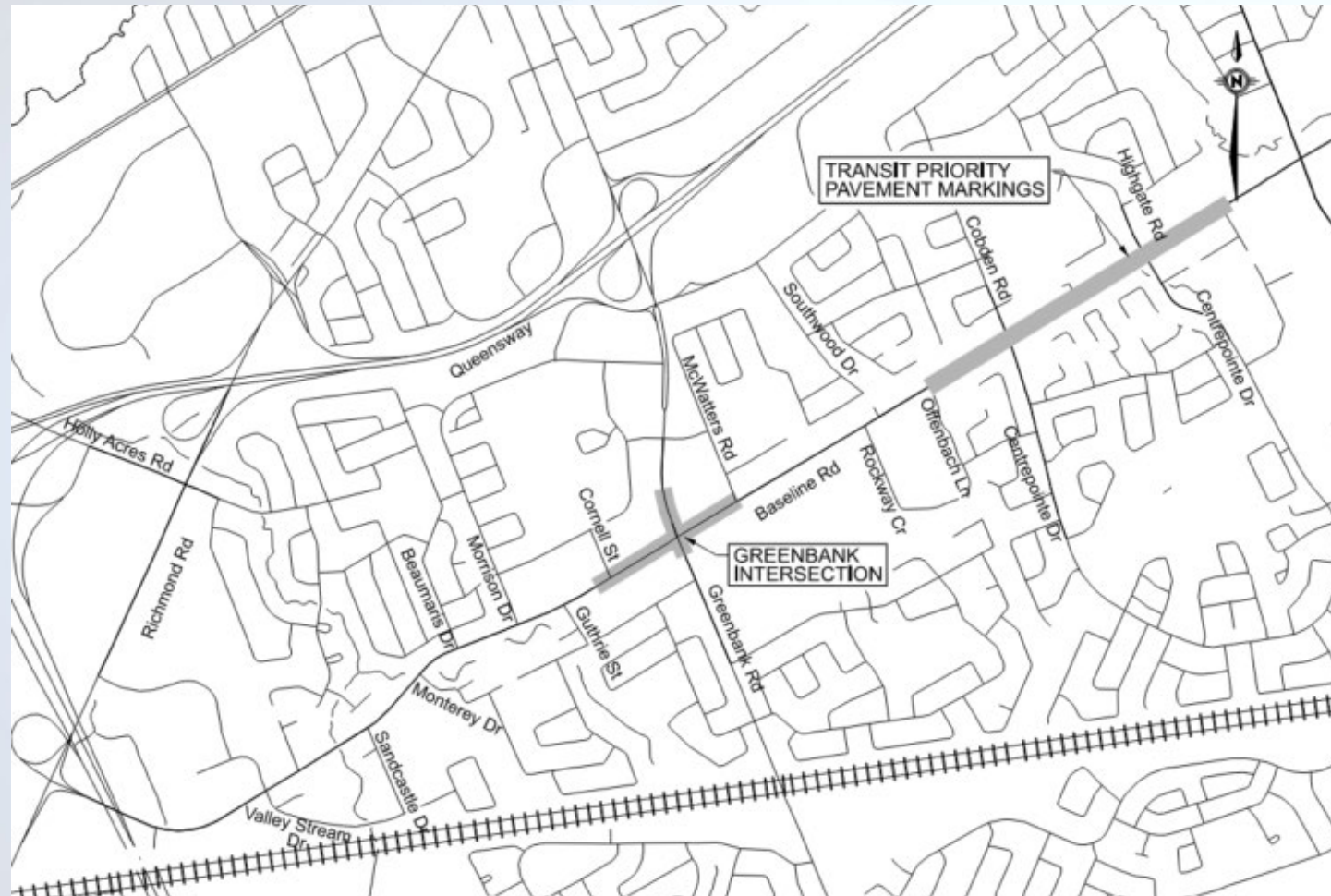
Additional information on the project can be found on the City's website at: ottawa.ca/BaselineGreenbank



Baseline/Greenbank Transit Priority Intersection Improvements

Project limits

- The project limits, as identified on the map, includes the Greenbank Road and Baseline Road intersection and approaches.
- The project includes a new protected intersection at Greenbank Road and Baseline Road with new concrete sidewalks, medians, curbs, raised asphalt cycle tracks, reconfigured traffic lanes, enhanced bus stops, utility pole and structure relocations.
- The project also includes enhanced pavement markings and signage on Baseline Road from Offenbach Lane to Constellation Drive.



Baseline/Greenbank Transit Priority Intersection Improvements

Project purpose and background

Reconstruction of the Greenbank Road and Baseline Road intersection with the implementation of improved street features:

- Dedicated bus priority lanes
- New concrete sidewalks and curbs
- Raised asphalt uni-directional cycle tracks
- Reconfigured traffic lanes
- Utility pole and structure relocations
- Enhanced pavement markings and signage

Improve transit services through the intersection

- Dedicated through and receiving lanes
- Improved transit travel times within the Baseline corridor
- Enhanced bus stops and shelters

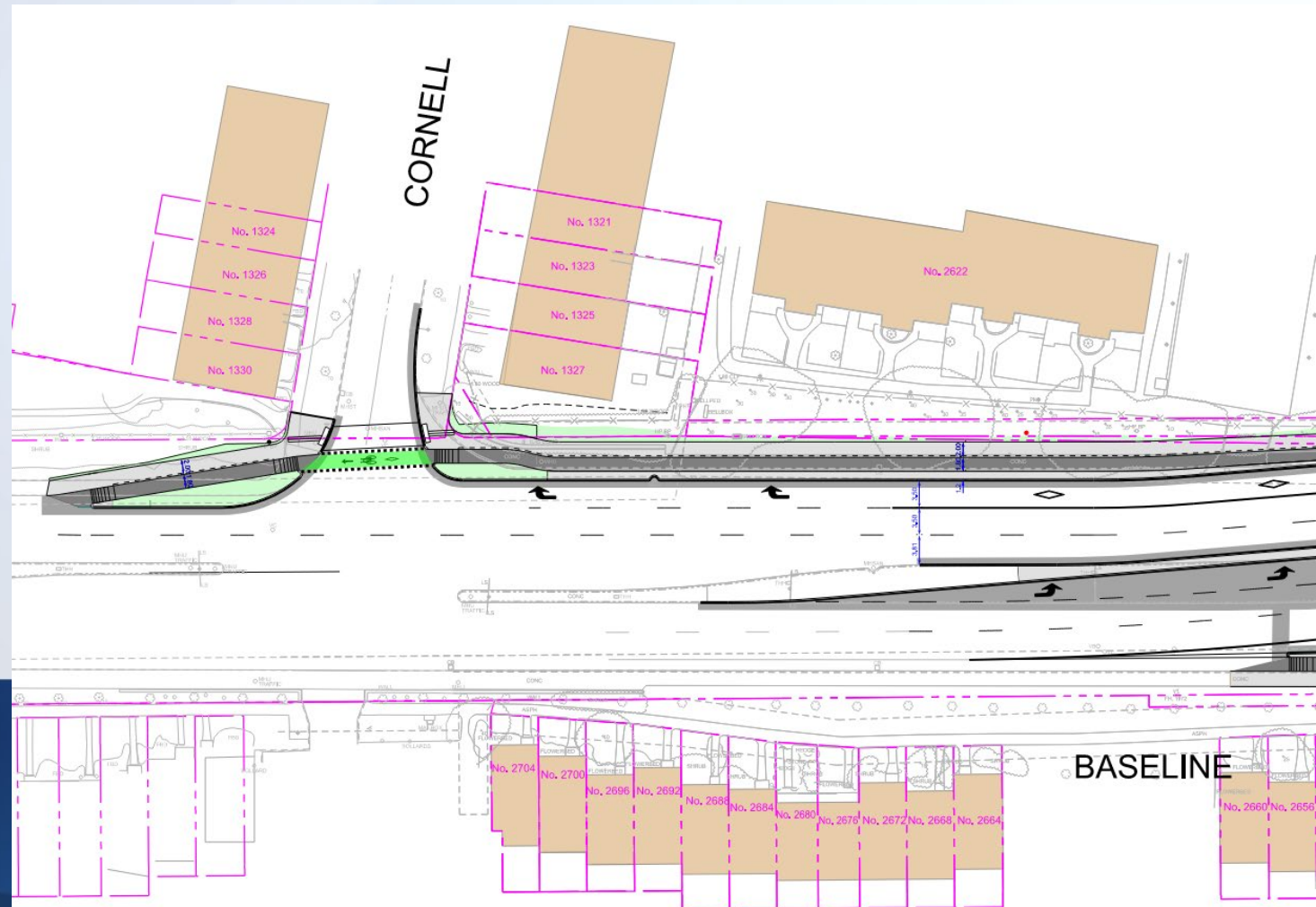


Baseline/Greenbank Transit Priority Intersection Improvements

Baseline Road at Cornell Street – west of Baseline/Greenbank intersection

The following are the key project aspects for Baseline/Greenbank west of the intersection at Cornell Street:

- A westbound curbside transit priority lane is proposed, allowing for right turn lane into Cornell Street.
- Extended eastbound left turn lane starts to develop towards the Baseline/Greenbank intersection.
- Uni-directional cycle track and sidewalk will be constructed in the westbound direction across Cornell Street.

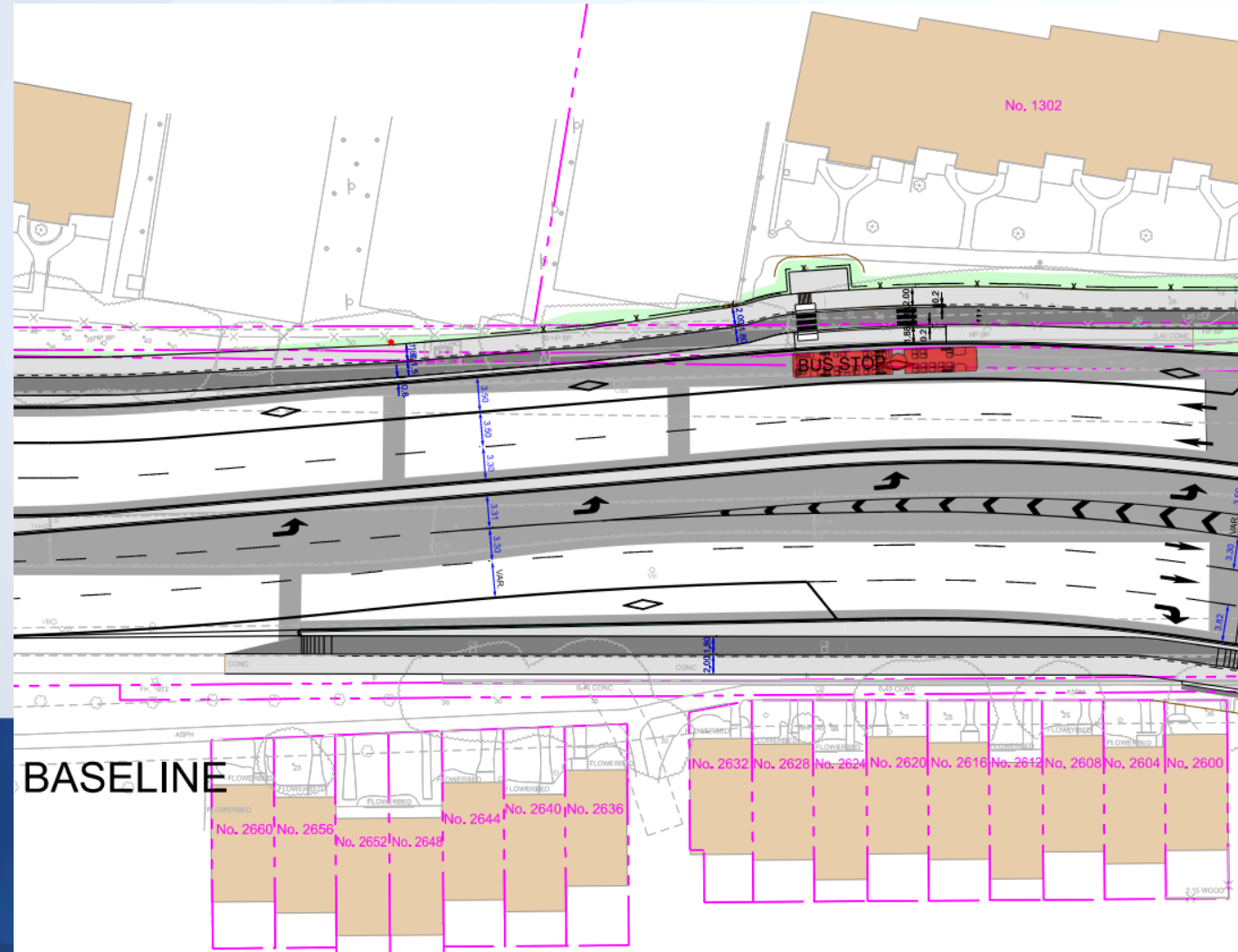


Baseline/Greenbank Transit Priority Intersection Improvements

Baseline Road – west of Baseline/Greenbank intersection

The following are the key project aspects for Baseline/Greenbank west of the intersection:

- A westbound curbside transit priority lane is proposed.
- Extended eastbound left turn lane developing towards the Baseline/Greenbank intersection.
- An eastbound curbside transit priority lane is proposed, allowing for right turn lane onto Greenbank Road.
- The existing bus stop will be shifted east and upgraded to meet the latest accessibility standards.
- Uni-directional cycle tracks will be added in both directions to enhance cyclist safety, comfort and connectivity.
- South side retaining wall will be relocated.



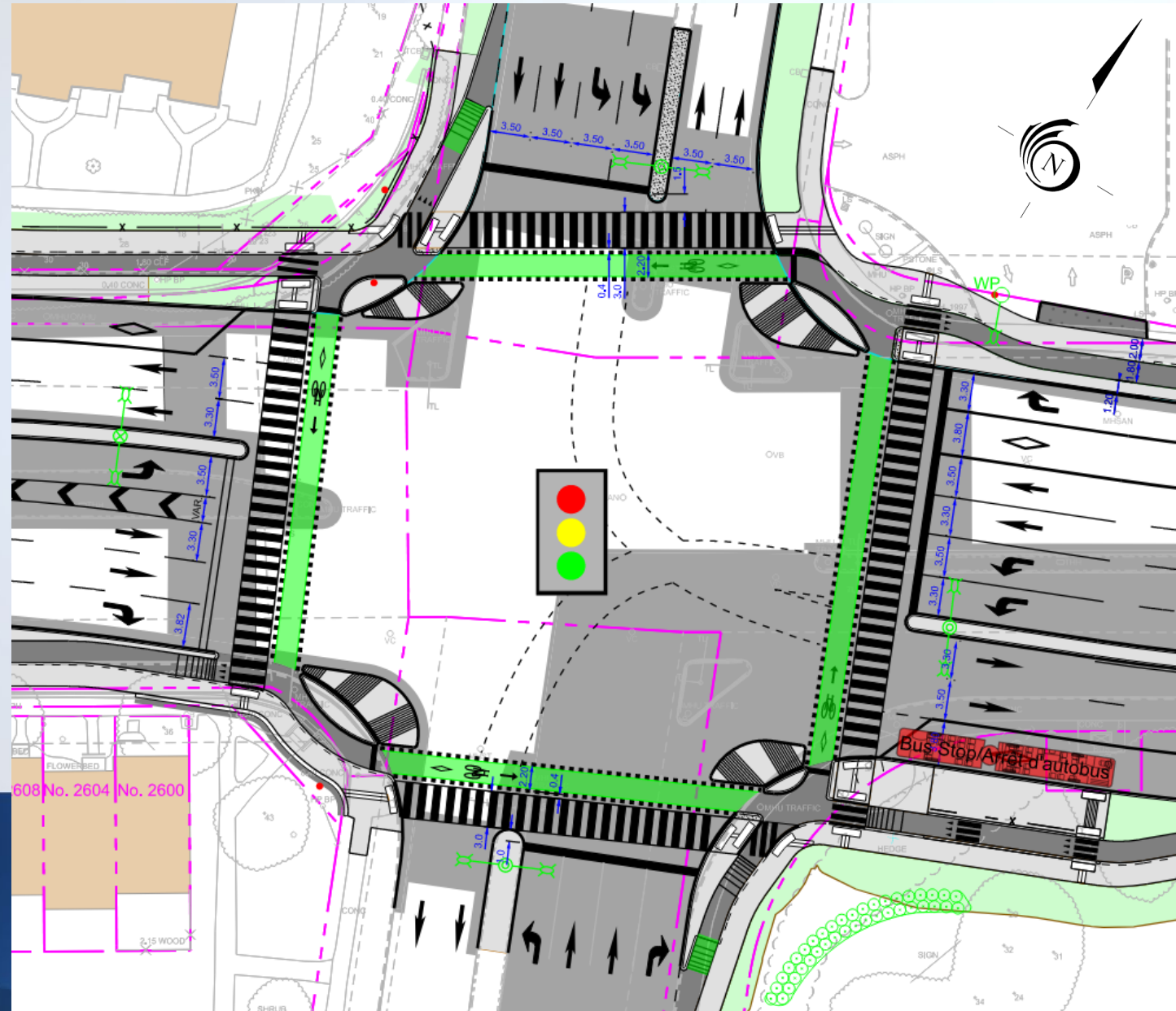
Baseline/Greenbank Transit Priority Intersection Improvements

Intersection design

This image illustrates the improved street design measures proposed:

- Accessibility for all users
- Protection for cyclists and pedestrians, including raised cycle tracks and cross rides
- Separation and delineation of users
- Dedicated Transit lanes
- Enhanced bus stops, with ride behind cycle tracks and sidewalks
- Clarity of movement

These designs are supplemented with detailed street signage, traffic signals and streetlight plans that will be implemented as part of the construction project.



Baseline/Greenbank Transit Priority Intersection Improvements

Typical cross sections

Figure 1: Typical cross section looking east - east of Greenbank Road intersection on Baseline Road

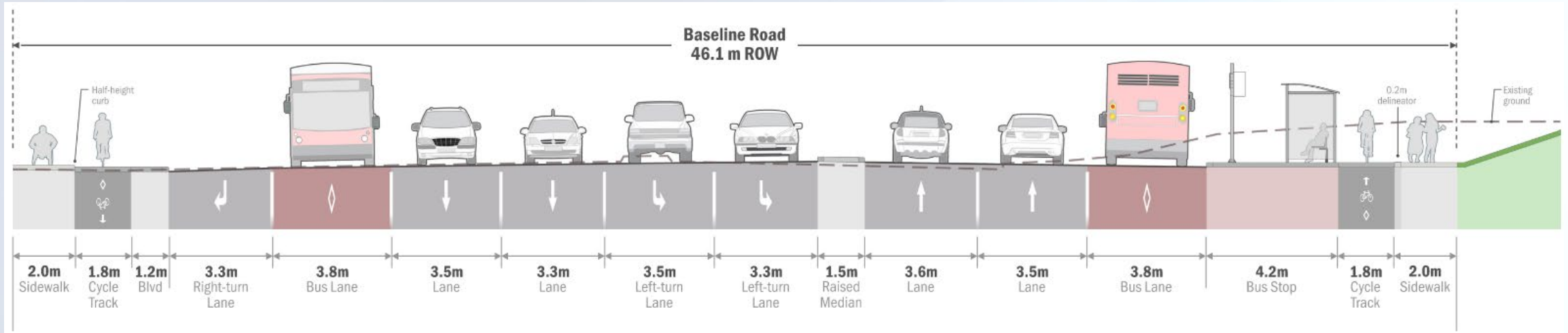
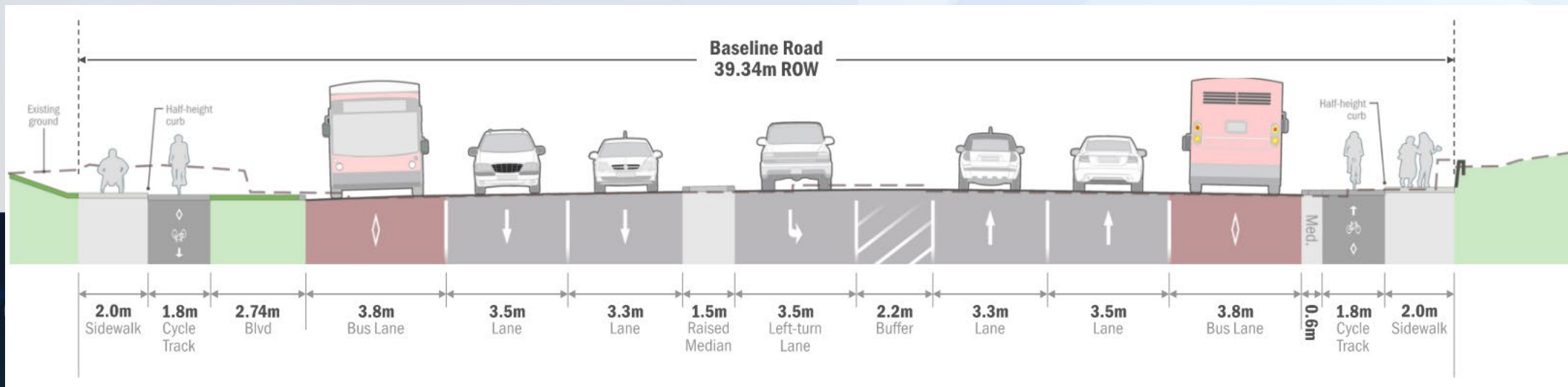


Figure 2: Typical cross section looking east - west of Greenbank Road intersection on Baseline Road

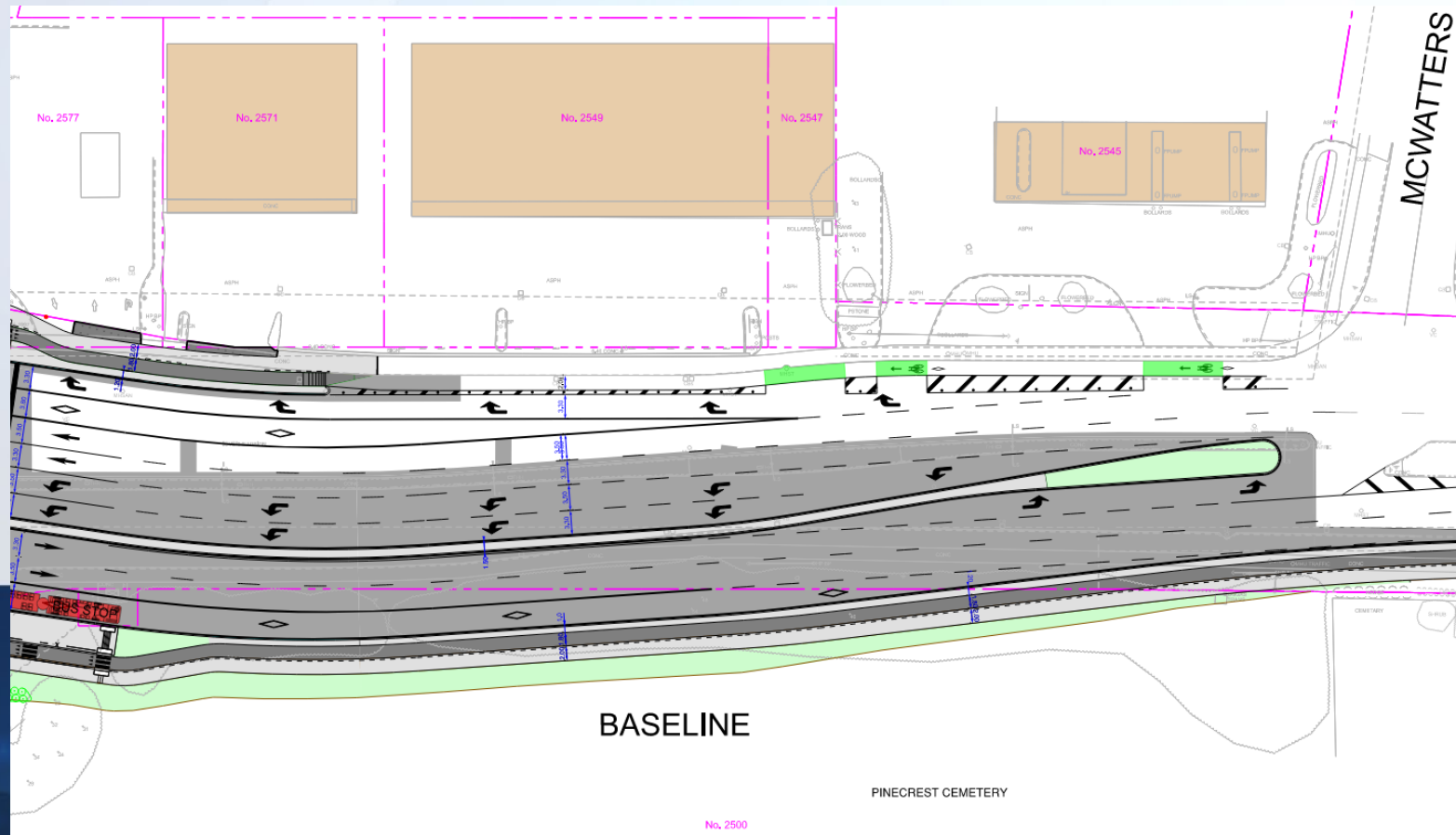


Baseline/Greenbank Transit Priority Intersection Improvements

Baseline Road – east of Baseline/Greenbank intersection

The following are the key project aspects for Baseline/Greenbank east of the intersection:

- A westbound transit priority lane is proposed, with a dedicated curbside right turn lane onto Greenbank Road.
- On-road buffered bike lane will be added in the westbound direction.
- Sidewalks will be widened to 2.0m (1.8m where constrained).
- Uni-directional cycle tracks will be added in the east direction to enhance cyclist safety, comfort and connectivity.

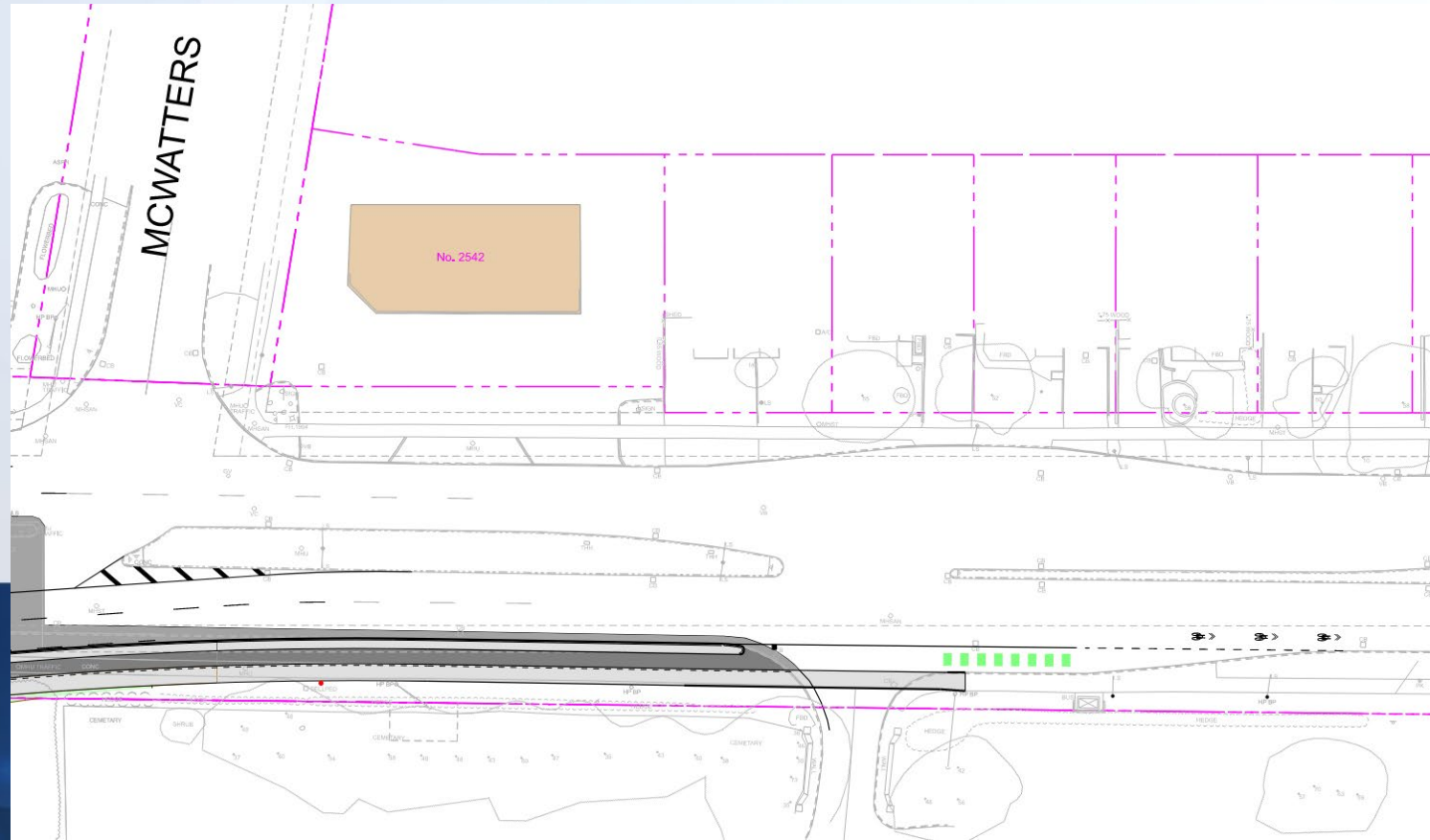


Baseline/Greenbank Transit Priority Intersection Improvements

Baseline Road at McWatters Road – east of Baseline/Greenbank

The following are the key project aspects for Baseline/Greenbank east of the intersection at McWatters Road:

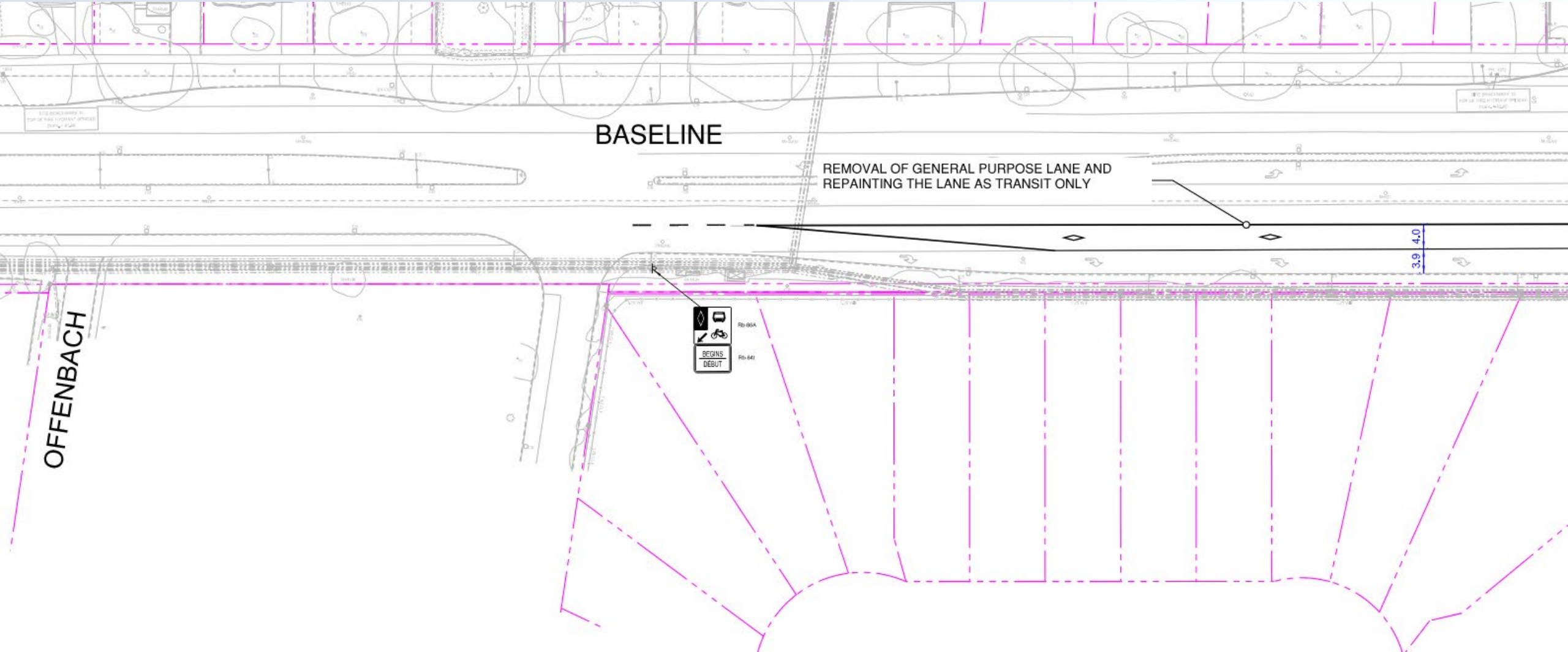
- Uni-directional cycle track will be added in the eastbound direction to the Pinecrest Cemetery entrance to enhance cyclist safety, comfort and connectivity.
- Sidewalks will be widened to 2.0m (1.8m where constrained) continuing through the Pinecrest Cemetery entrance.
- Access to McWatters Road will be maintained.



Baseline/Greenbank Transit Priority Intersection Improvements

Baseline Road at Offenbach Lane

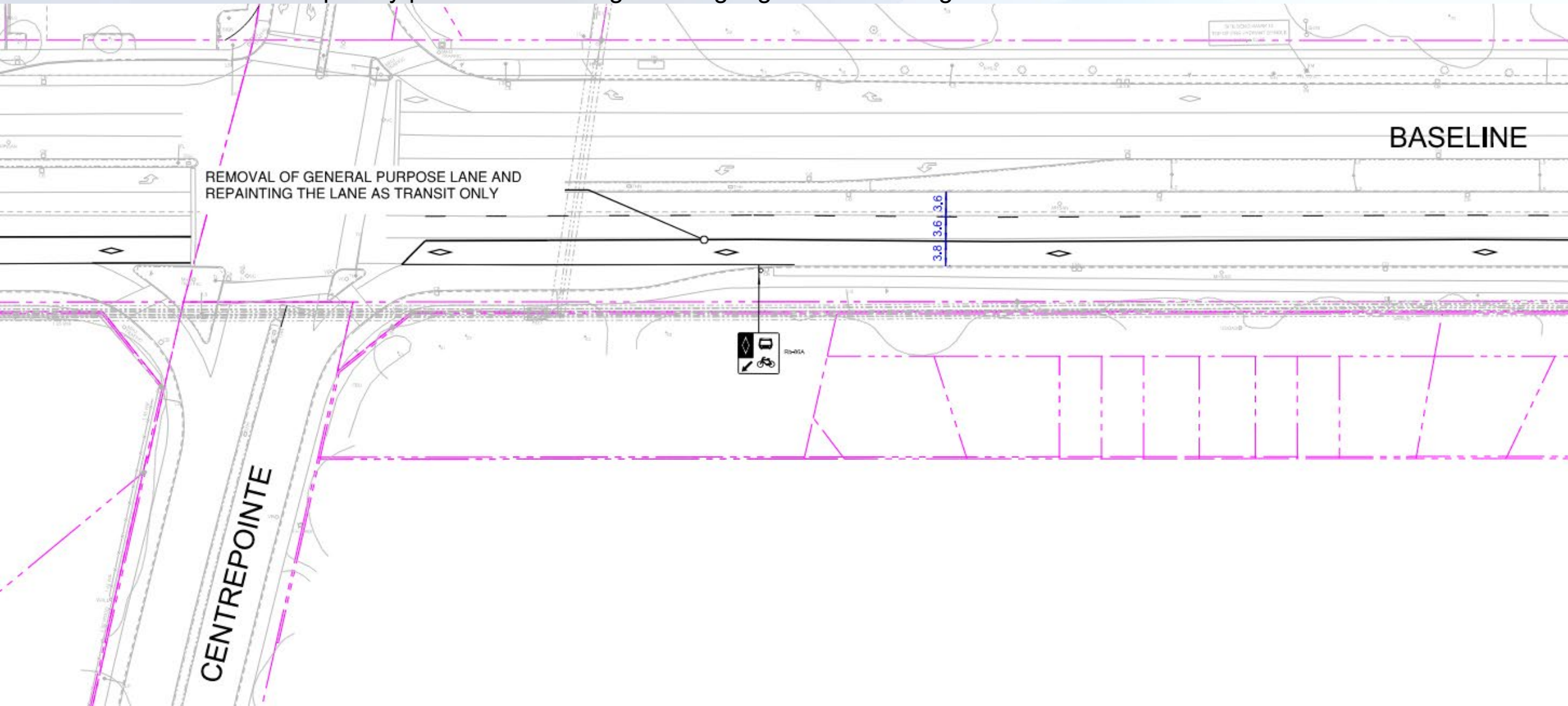
- Enhanced transit priority pavement markings and signage in the existing eastbound traffic lanes.



Baseline/Greenbank Transit Priority Intersection Improvements

Baseline Road at Centrepoint Drive West/Cobden Road

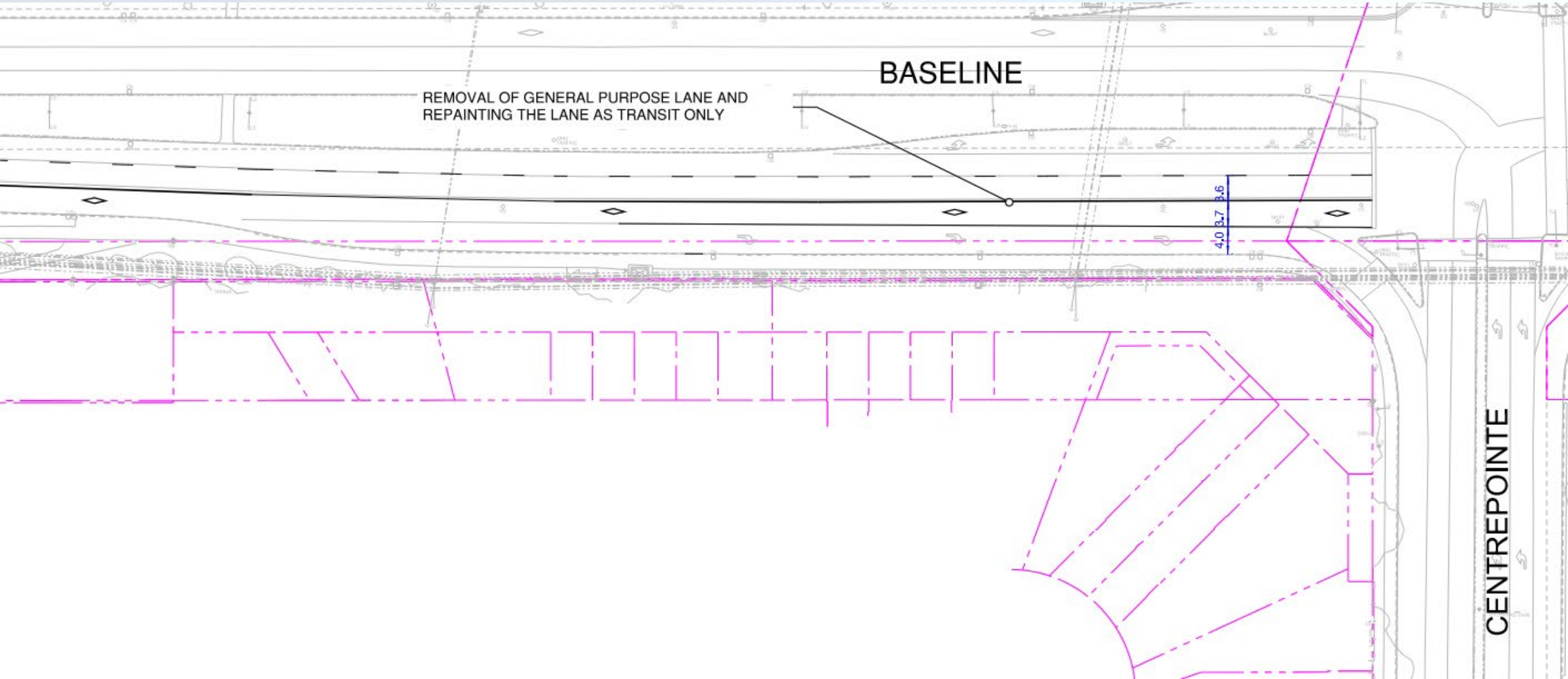
- Enhanced transit priority pavement markings and signage in the existing eastbound traffic lanes.



Baseline/Greenbank Transit Priority Intersection Improvements

Baseline Road East of Centrepoint Drive West intersection

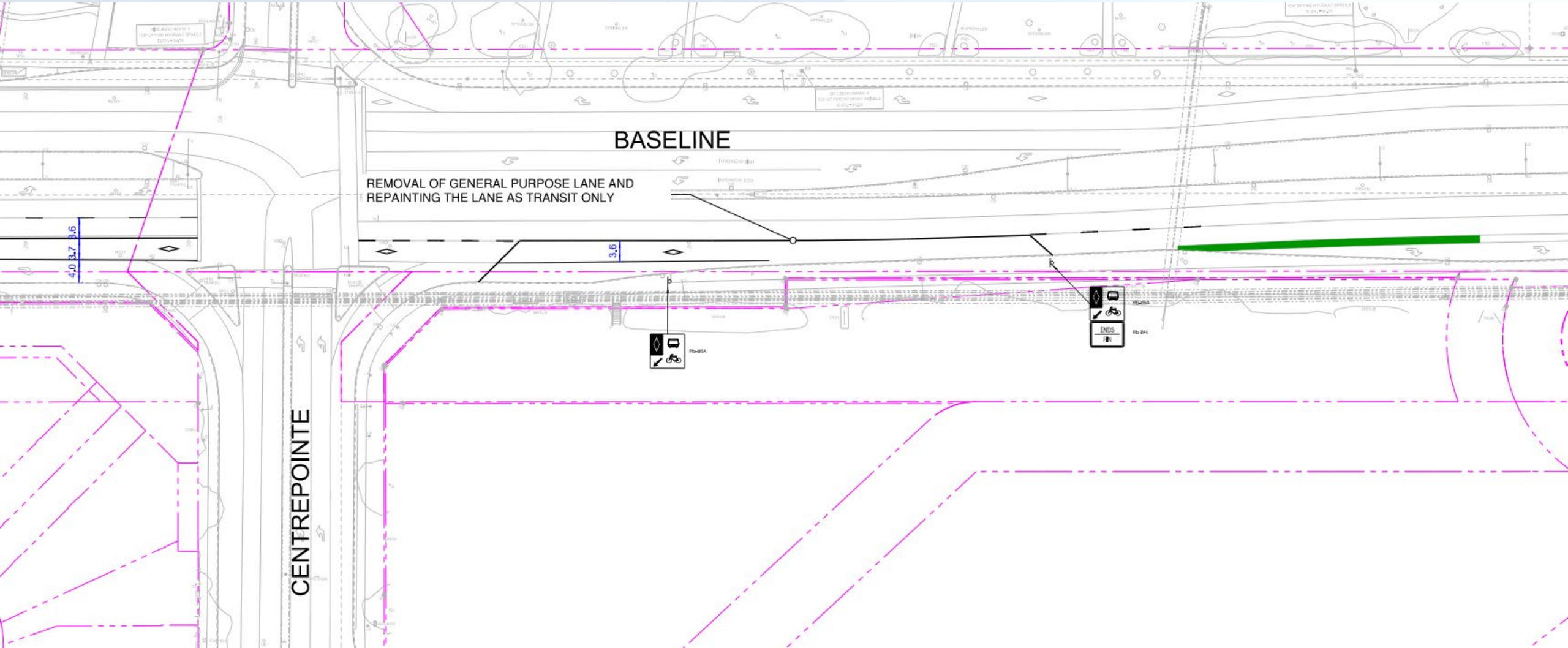
- Enhanced transit priority pavement markings and signage in the existing eastbound traffic lanes.



Baseline/Greenbank Transit Priority Intersection Improvements

Baseline Road at Centrepointe Drive East / Highgate Road

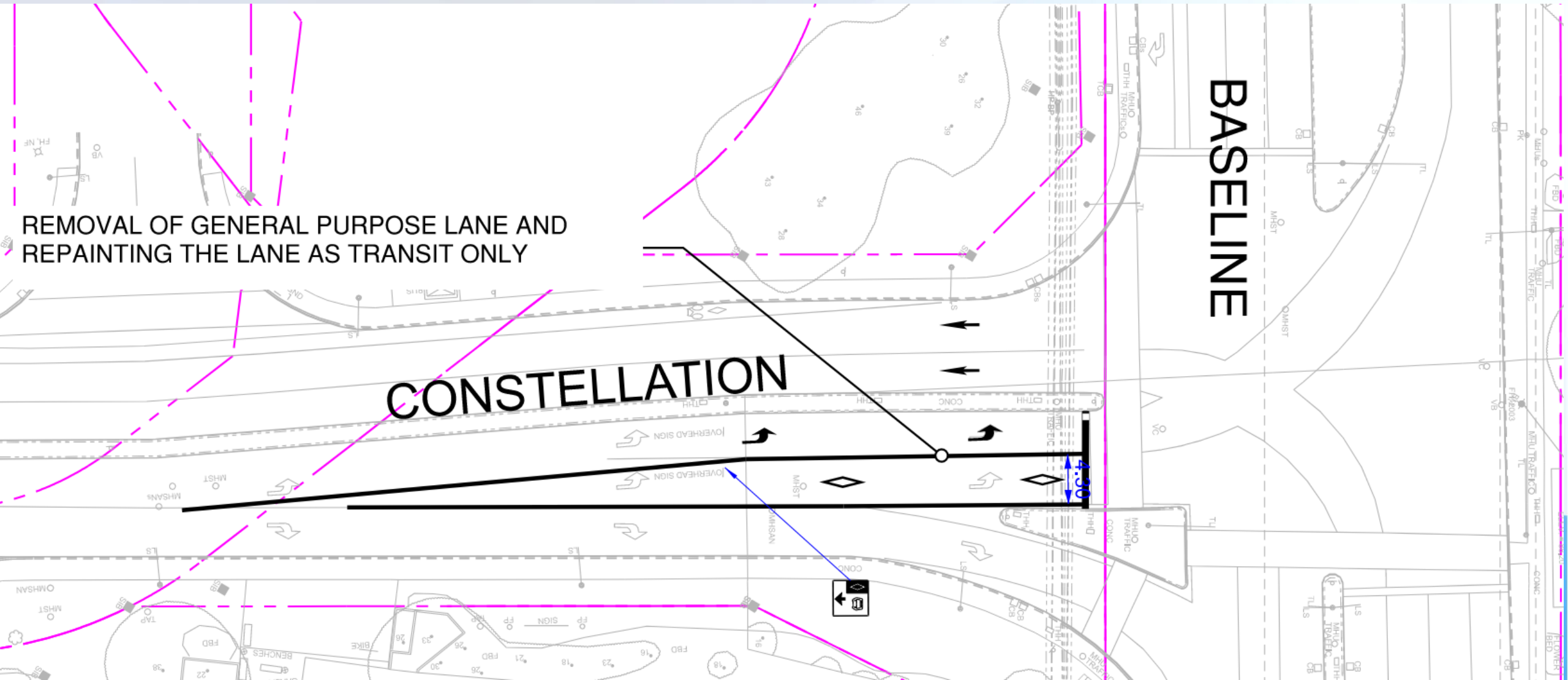
- Enhanced transit priority pavement markings and signage in the existing eastbound traffic lanes.



Baseline/Greenbank Transit Priority Intersection Improvements

Constellation Drive at Baseline Road

- Enhanced transit priority pavement markings and signage in the existing eastbound traffic lanes.



Baseline/Greenbank Transit Priority Intersection Improvements

Landscaping

Tree removals:

- Within City right of way:
12 trees
- On private property:
31 trees

New trees & other plantings:

- City is exploring opportunities to plant new trees and shrubs on private property as part of the land acquisition process.

Image 1: Tree removals in northwest corner of intersection.

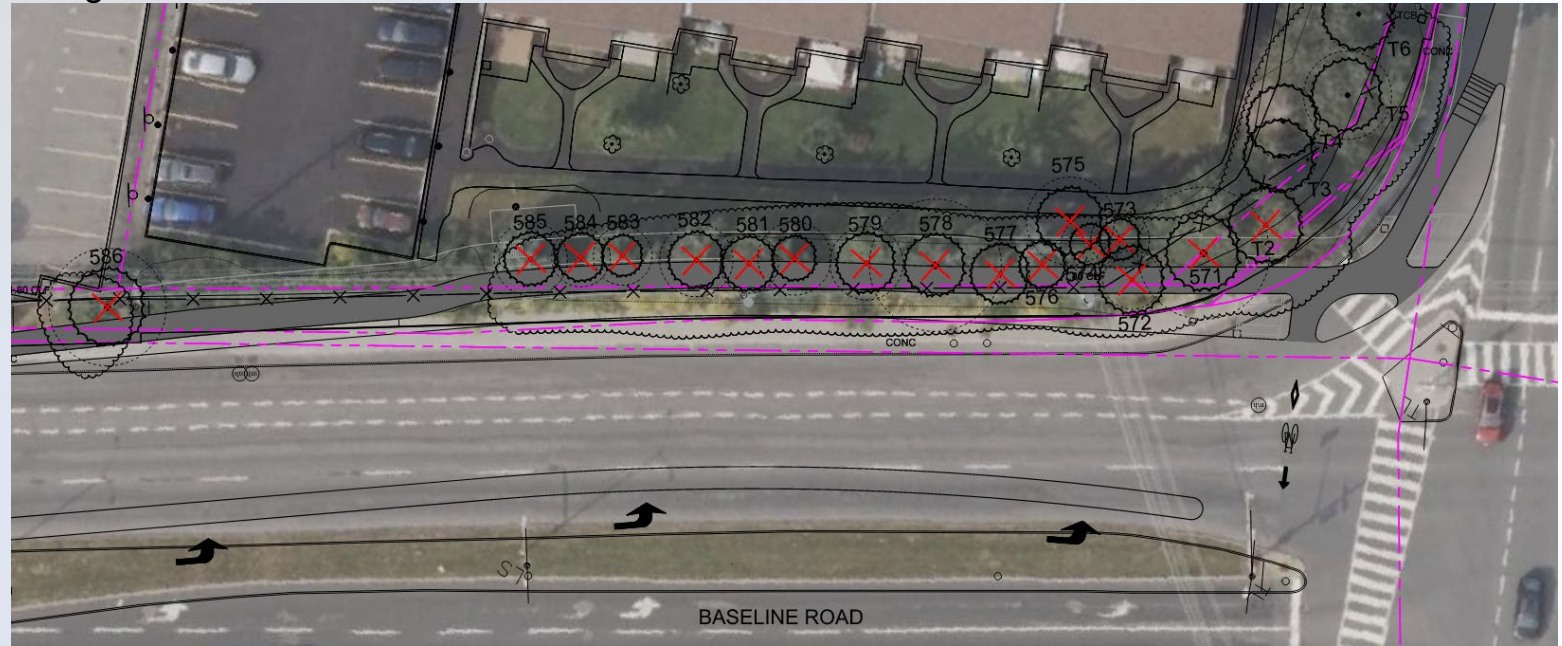
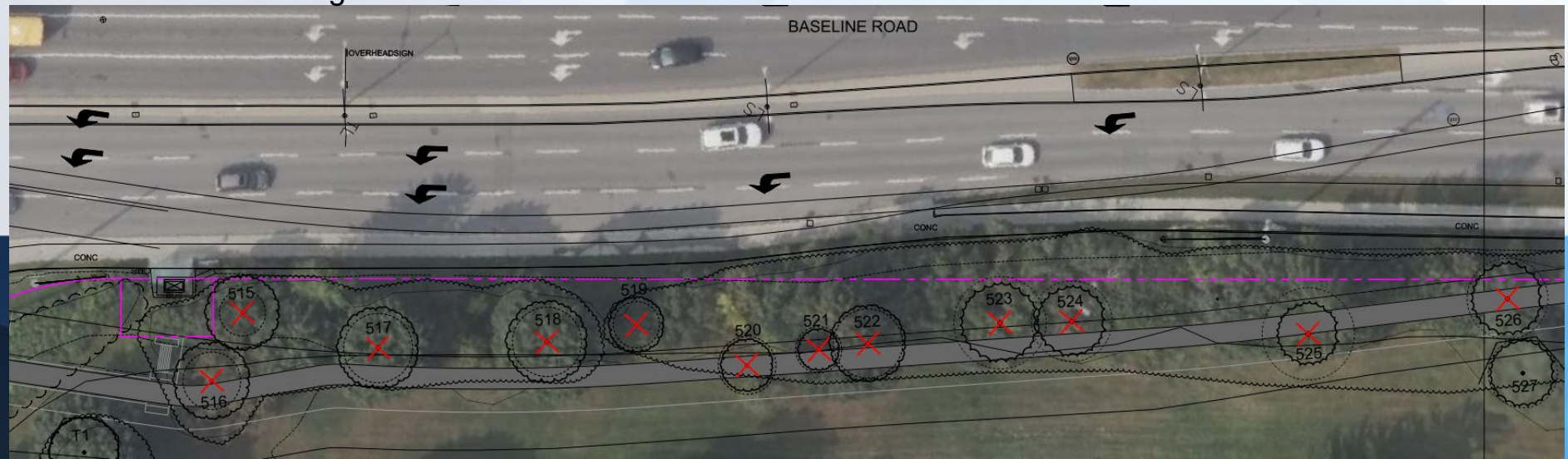


Image 2: Tree removals in southeast corner of intersection.



LEGEND:

	XXX EXISTING DECIDUOUS TREE WITH TREE IDENTIFICATION NUMBER, APPROXIMATE LIMIT OF CANOPY AND CRITICAL ROOT ZONE
	XXX EXISTING CONIFEROUS TREE WITH TREE IDENTIFICATION NUMBER, APPROXIMATE LIMIT OF CANOPY AND CRITICAL ROOT ZONE
	XXX EXISTING DECIDUOUS TREE TO BE REMOVED
	XXX EXISTING CONIFEROUS TREE TO BE REMOVED
	TREE PROTECTION FENCING

Baseline/Greenbank Transit Priority Intersection Improvements

Managing construction disruption – area specific objectives

The construction program will address these key objectives:

- Maintain clear and accessible walking routes and building access at all times.
- Maintain an appropriate level of transit service.
- Maintain at least one general purpose vehicle lane in each direction on Baseline Road and Greenbank Road given their important role in the City's arterial road, truck and transit networks.
- General requirements, working conditions and restrictions:
 - Open lanes shall remain uninterrupted weekdays (Monday to Friday), during peak periods (7 to 9:30 am & 3 to 6 pm).
 - Minor interruptions of open lanes permitted during off-peak periods and weekends.

Baseline/Greenbank Transit Priority Intersection Improvements

Managing construction disruption – minimum lane requirements

- Baseline Road - Cornell Street to McWatters Road
 - All open lanes must function uninterrupted at all times.
 - Maintain a minimum of one (1) eastbound through-right lane and one (1) left-turn lane
 - Maintain a minimum of one (1) westbound lane, west of Greenbank Road at all times
 - Maintain a minimum of one (1) westbound through-right lane and one (1) left-turn lane
 - Maintain a minimum of one (1) eastbound lane, east of Greenbank Road at all times
- Greenbank Road - from 50m south of Baseline Road to 160m north of Baseline Road
 - All open lanes must function uninterrupted at all times.
 - Maintain a minimum of one (1) northbound through-right lane and one (1) auxiliary left-turn lane
 - Maintain a minimum of one (1) southbound lane, south of Baseline Road at all times
 - Maintain a minimum of one (1) southbound lane and one (1) auxiliary left-turn lane
 - Maintain a minimum of one (1) northbound lane, north of Baseline Road at all times

Baseline/Greenbank Transit Priority Intersection Improvements

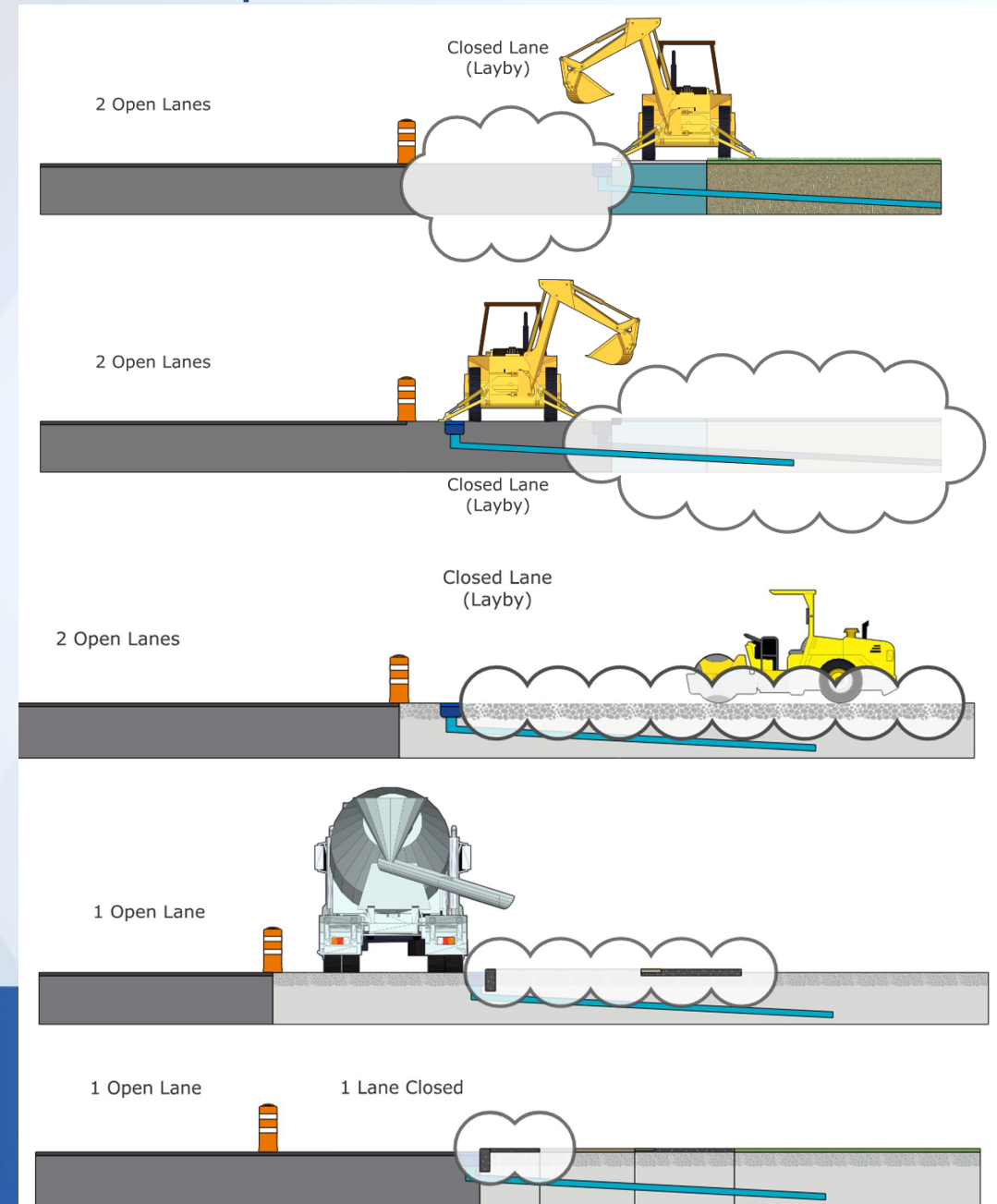
General construction sequencing

Activity 1 - 3: Lane reductions at existing curb line, two-way traffic to be maintained. Off-peak traffic lane disruptions.

Relocations, removals, grading and drainage, including the short-term relocation of bus stops to allow transit service to continue during construction. Includes utility and catch basin relocations and adjustments.

Activity 4 - 5: Lane reductions at new curb line, two-way traffic to be maintained. Off-peak lane disruptions.

New concrete and asphalt installations, including curbs, medians, corner aprons, bus pads, sidewalks, cycle tracks, roadway resurfacing.



Baseline/Greenbank Transit Priority Intersection Improvements

Construction start up schedule

The following are the key dates and targets for the construction project initiation (subject to property acquisition):

- Early utility reconstructions: winter 2025
- Commencement of construction: spring 2025
- Possible winter shutdown: December 2025 to April 2026
- Construction completion (anticipated): fall 2026



Baseline/Greenbank Transit Priority Intersection Improvements

Working with the community during construction

The City will be committed to working collaboratively and continuously with affected parties during the construction period.

The City will:

- Notify residents of ongoing and upcoming work via the City's website;
- Keep lines of communication open between the City, its contractor, area institutions, businesses and residents;
- Make best efforts to schedule construction activities that work around special events;
- Actively involve community stakeholders in implementing solutions to manage the project's construction period disruption; and
- Distribution of project notices to provide regular project updates and associated traffic impacts.



Baseline/Greenbank Transit Priority Intersection Improvements

Opportunities for engagement & next steps

Following this opportunity for stakeholder input, your feedback will be reviewed along with input received from others in finalizing all elements of the plans for construction. Further engagement opportunities will occur throughout the course of the construction project:

- The next project update is scheduled for spring 2025, at the pre-construction stage as transportation management solutions are being finalized and implemented.
- The City's real estate team may be contacting you if you are the registered landowner of a property for which a property acquisition or consent to enter onto your property is required for construction purposes.
- The City's construction implementation team will also implement methods to receive and address stakeholder input throughout the construction period.
- Additional information on the project can be found on the City's website at: ottawa.ca/BaselineGreenbank

Please identify any comments or concerns you would like to see addressed and provide those to the City using the tools provided on the City's website as noted above. Comments or questions can also be submitted by email to the **City's**

Project Manager: chris.ogilvie@ottawa.ca

Your feedback is important to the success of this project. **Please scan the QR code to provide feedback by November 13, 2024.** Thank you for your participation!

