

Carbon Monoxide (CO) alarms in multi-unit residential occupancies (including retirement homes) and care occupancies

The examples in this guide can help you determine where Carbon Monoxide (CO) alarms need to be installed in your building and unit.

Installing alarms

Under the Ontario Fire Code, Carbon Monoxide (CO) alarms are required as per the diagrams below if your building has any of the following:

- A storage or parking garage
- Fuel-fired appliances, such as forced air furnaces, water heaters, or fireplaces

Sleeping areas

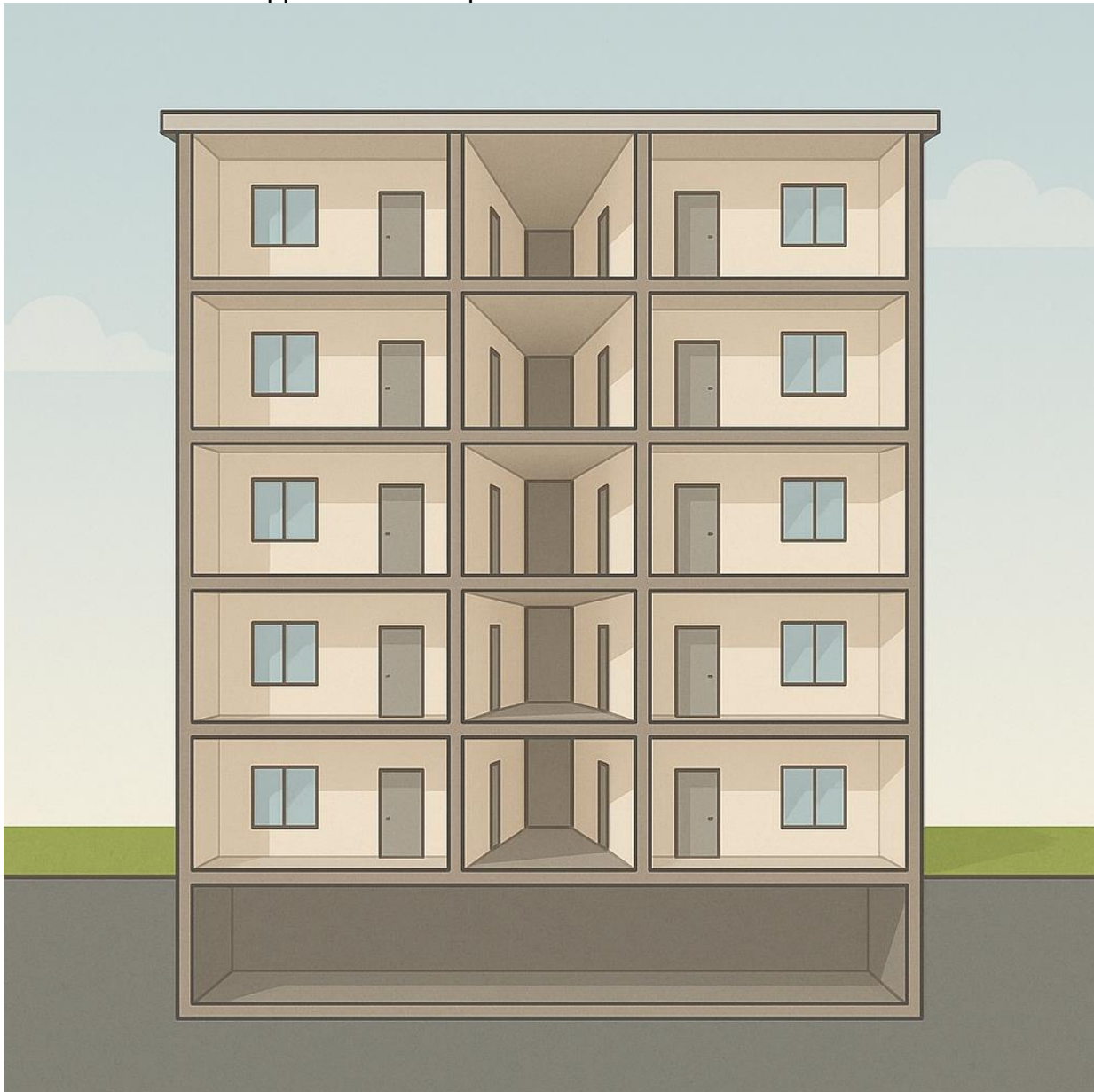
Alarms must be installed immediately outside of the sleeping rooms, usually in the suite's private/unshared hallway.

Note:

These are the requirements of the Ontario Fire Code. The Ontario Building Code may require carbon monoxide monitoring devices and systems as part of the ventilation system for storage (parking) garages.

Example 1: building with no garage or fuel-fired appliances

- No storage (parking) garage
- No fuel-fired appliances or fireplaces

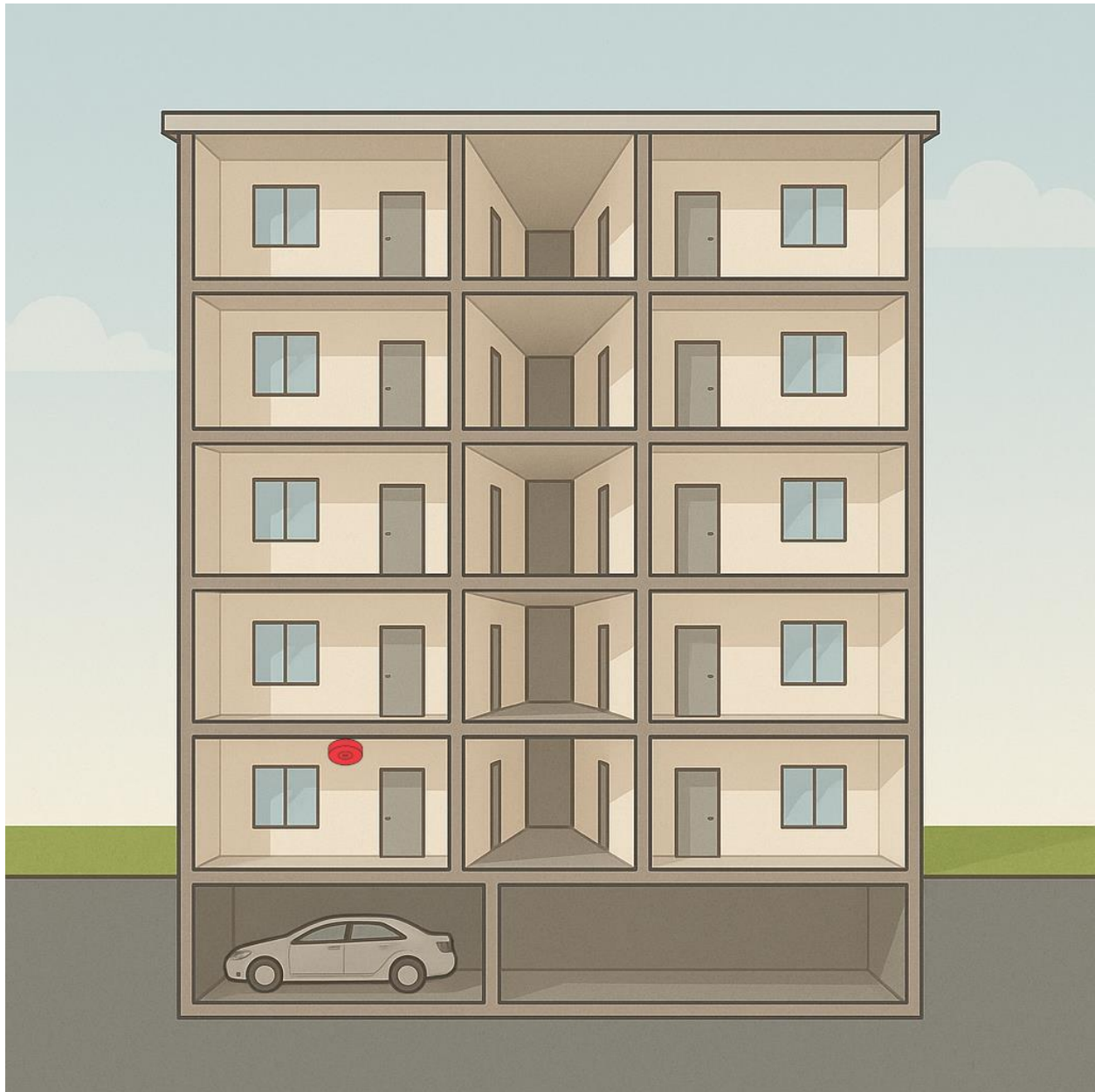


Answer 1:

No Carbon Monoxide alarms required.

Example 2: Building with a storage (parking) garage

- **Has a storage (parking) garage**
- No fuel-fired appliances or fireplaces

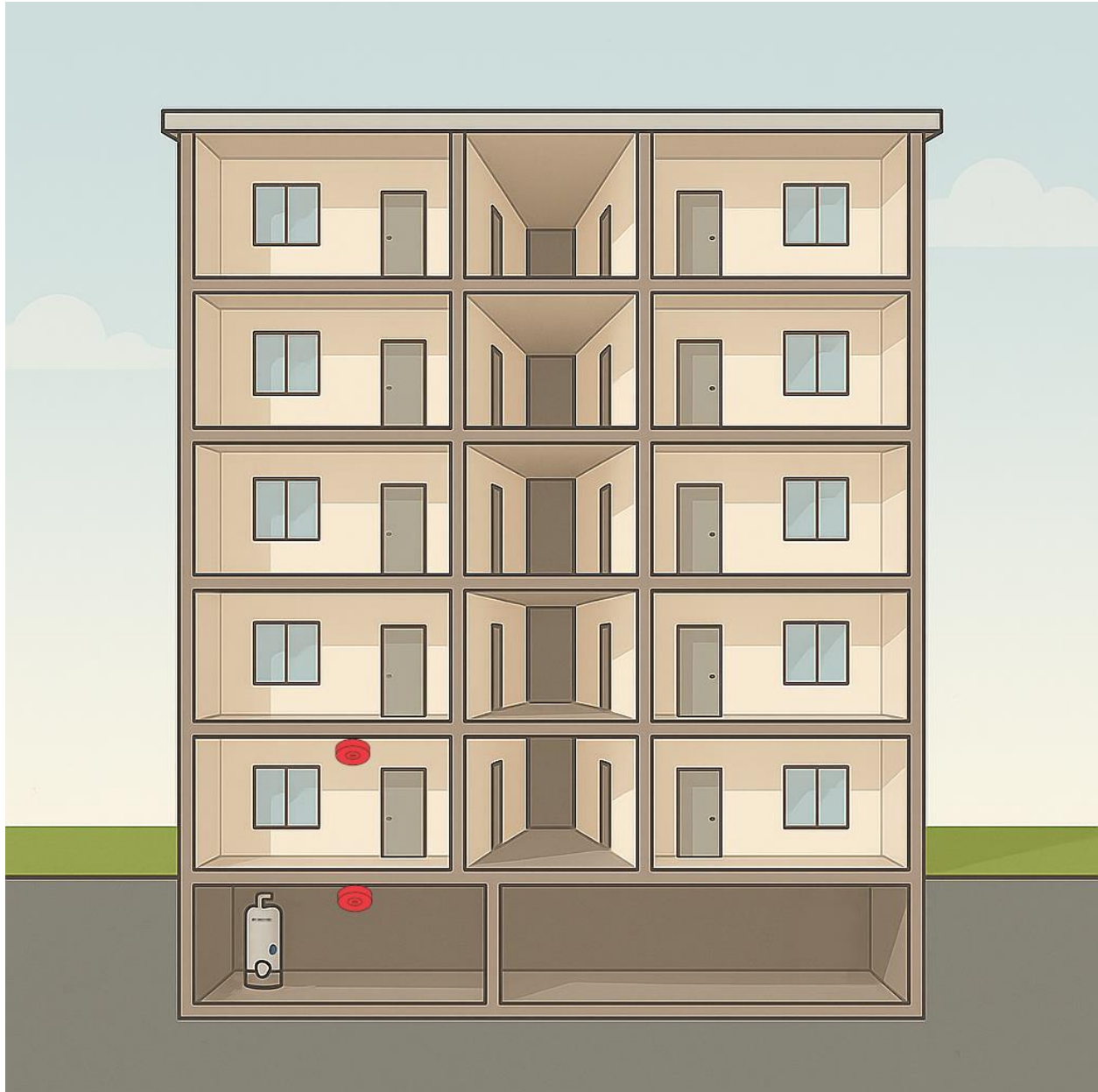


Answer 2:

If there is a storage (parking) garage in the building, Carbon Monoxide alarms must be installed immediately outside of the sleeping room if the suite shares a wall, floor, or ceiling with the storage (parking) garage

Example 3: Building with fuel fired appliance other than forced air

- No storage (parking) garage
- **Has a fuel-fired appliance other than forced-air** (For example: gas water heater, gas generator, gas or wood fireplace)



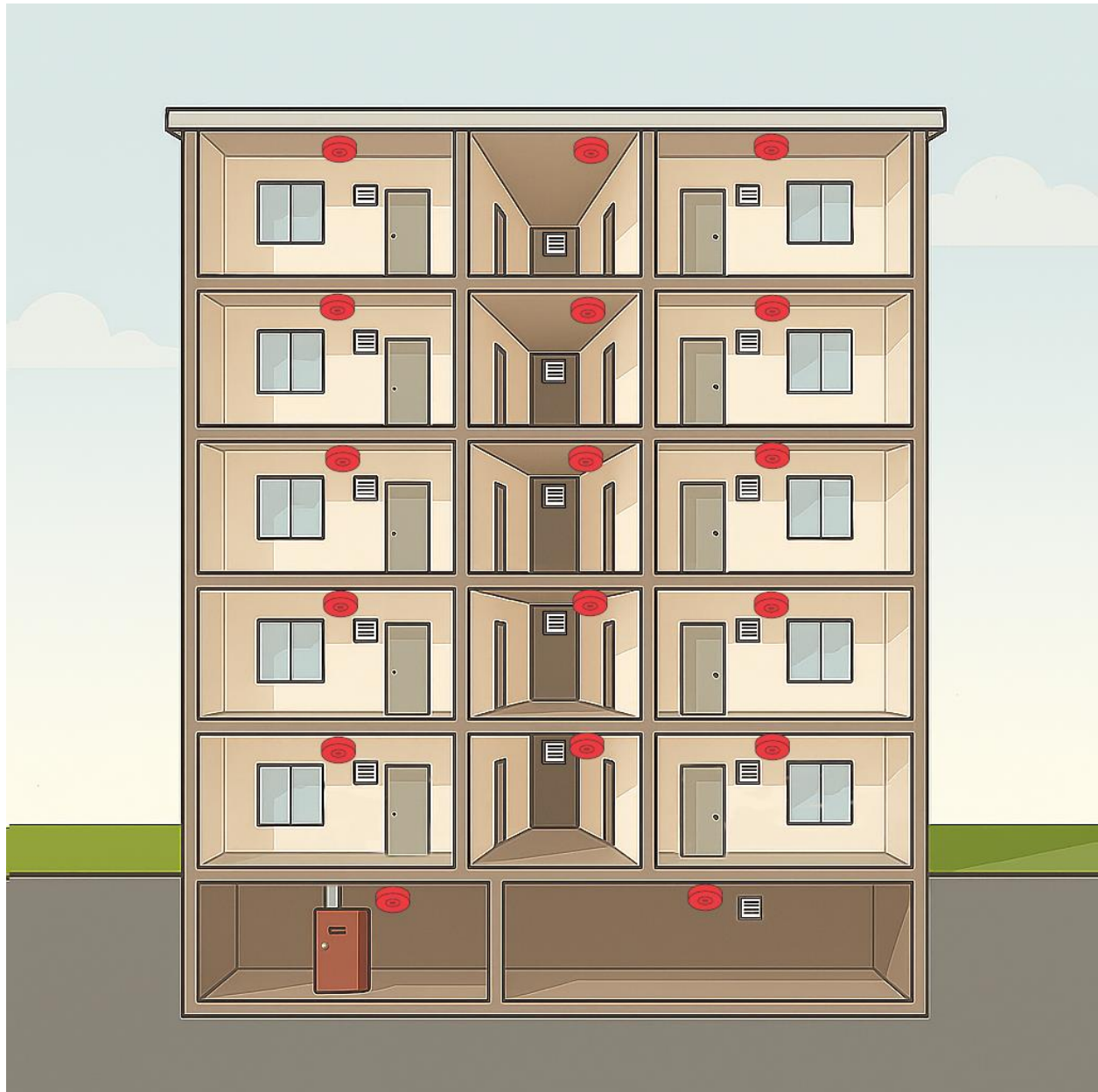
Answer 3:

If there is a fuel-burning appliance in the building but not in a suite, the Carbon Monoxide alarms must be installed:

- In the service room where the fuel-burning appliance is installed, and
- In suites that share a wall, floor, or ceiling with the room that the appliance is in, immediately outside of the sleeping rooms (the suite's unshared hallway).

Example 4: Building with a forced air fuel-burning furnace

- No storage (parking) garage
- **Has a forced-air fuel-burning appliance (furnace)**



Answer 4:

If there is a forced-air fuel-burning appliance in the building, Carbon Monoxide alarms must be installed:

- In the service room where the forced-air fuel-burning appliance is installed, and
- Inside a suite, immediately outside of the sleeping rooms (the suite's unshared hallway), if the suite is directly heated by the forced-air fuel-burning appliance, and

- In public corridors (shared hallways) that are directly heated by the forced-air fuel-burning appliance:
 - at least one Carbon Monoxide alarm in each portion of a divided corridors, and
 - each Carbon Monoxide alarm in an undivided portion of a corridor is spaced not more than 25 meters apart.