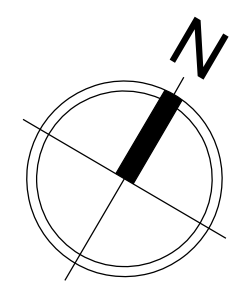


Craig Henry Drive Area Traffic Management Study Étude de gestion de la circulation locale sur la promenade Craig Henry

Study Area | Secteur à l'étude

LEGEND/LÉGENDE



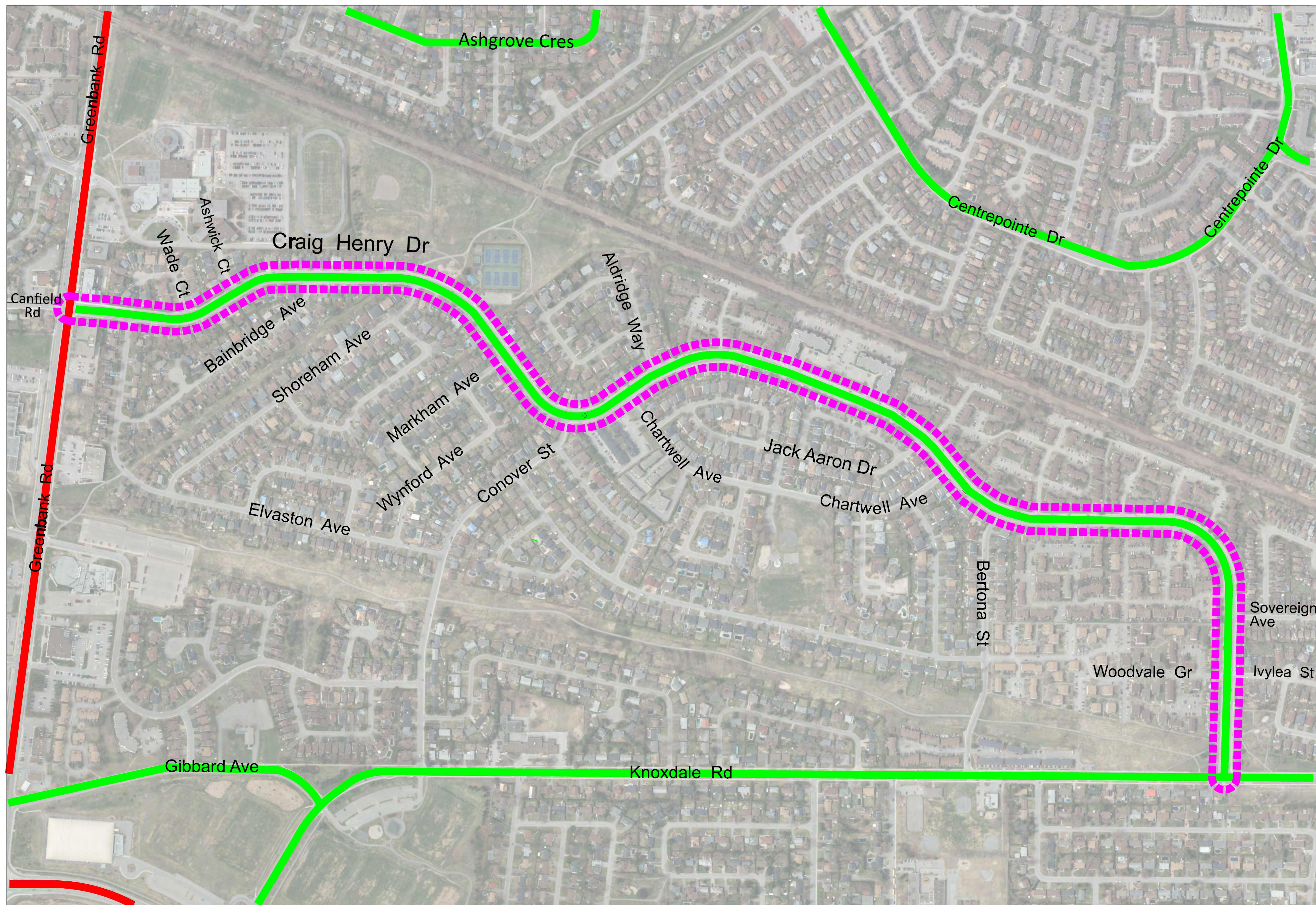
Study Area
Secteur à l'étude



Arterial Road
Route artérielle



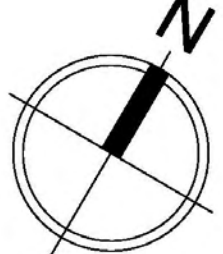
Collector Road
Route collectrice







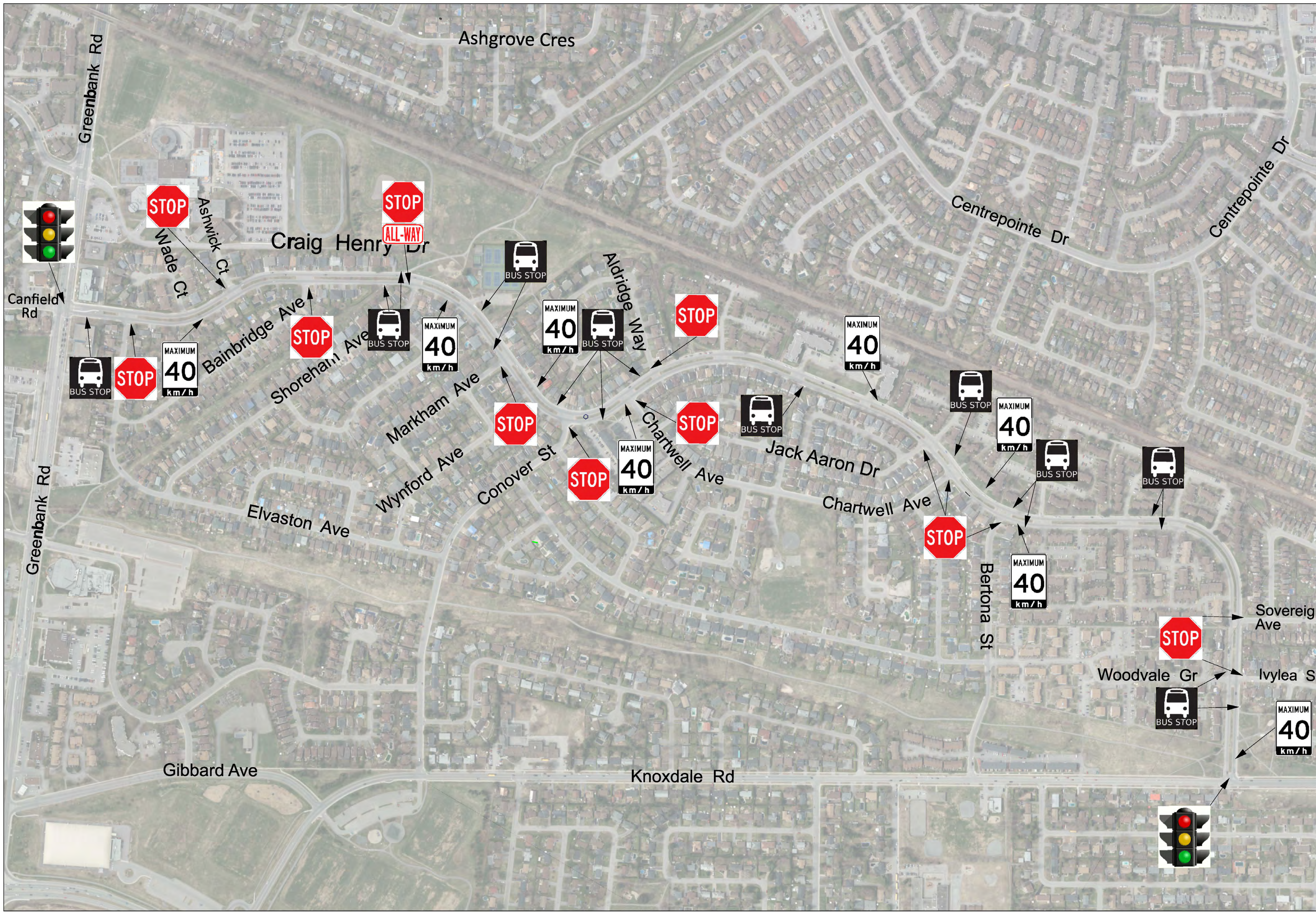
Craig Henry Drive Area Traffic Management Study Étude de gestion de la circulation locale sur la promenade Craig Henry

Road Signs | Panneaux Routiers

LEGEND/LÉGENDE



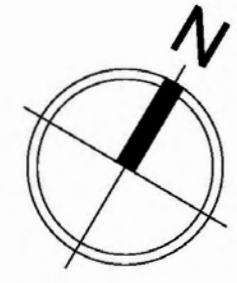
- Maximum speed limit / Limite de vitesse maximale: 
- Stop sign / Panneaux d'arrêt: 
- Bus stop / Arrêt d'autobus: 
- Traffic light / Feu de circulation: 



Craig Henry Drive Area Traffic Management Study Étude de gestion de la circulation locale sur la promenade Craig Henry

Speed | Vitesse

LEGEND/LÉGENDE



85th percentile speed (km/h) **XX**
Vitesse du 85e centile (km/h)

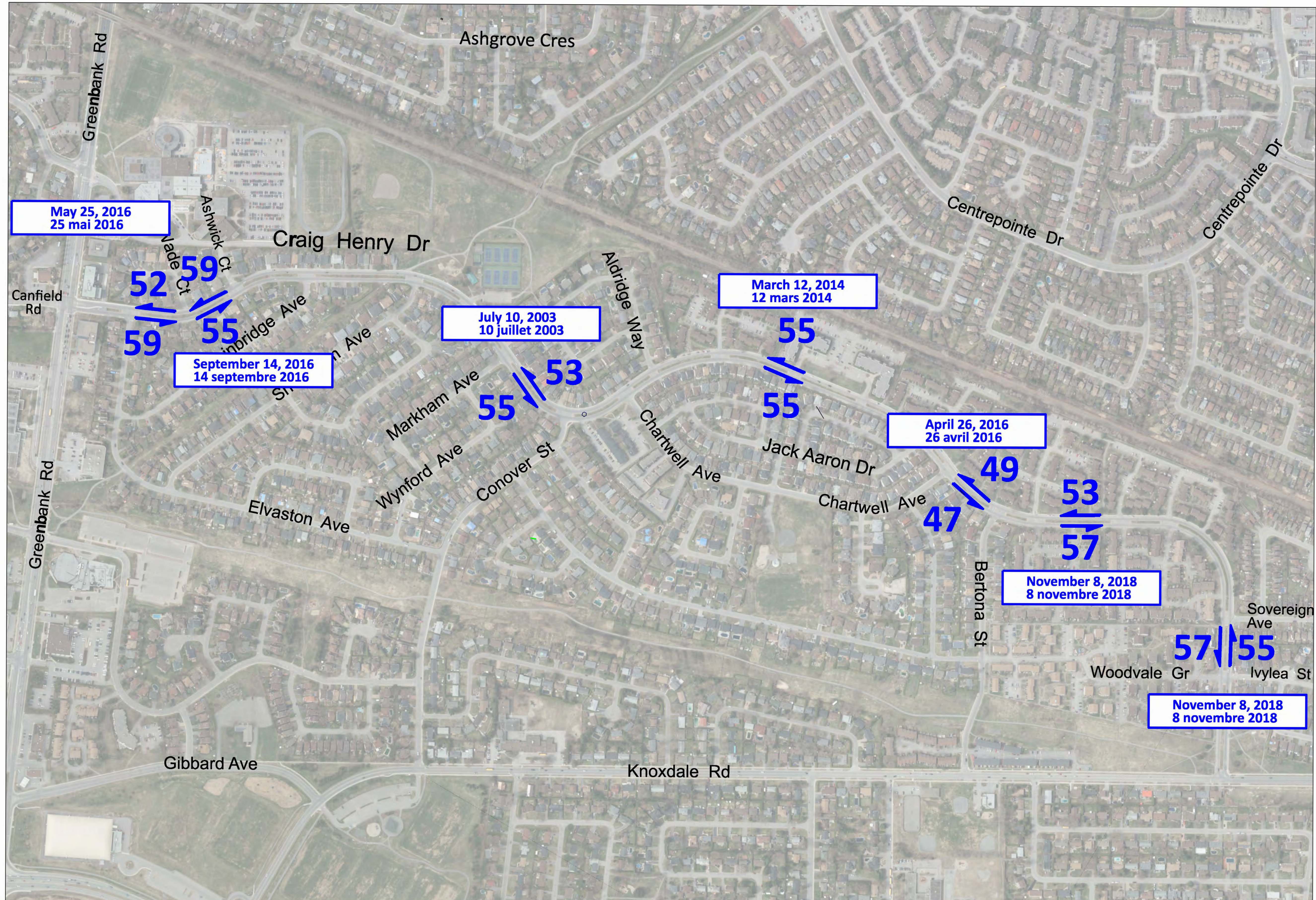
- * 85th percentile speed is the speed at or below which 85 percent of vehicles travel
- * La vitesse du 85e centile définit la vitesse en dessous de laquelle circulent 85% des véhicules

Direction
Sens



Survey Date
Date du relevé

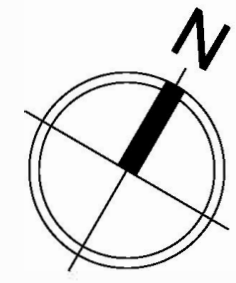
Month Day, Year
journée mois an



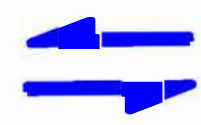
Craig Henry Drive Area Traffic Management Study Étude de gestion de la circulation locale sur la promenade Craig Henry

Traffic Volume | Volume de la circulation

LEGEND/LÉGENDE



Direction
Sens

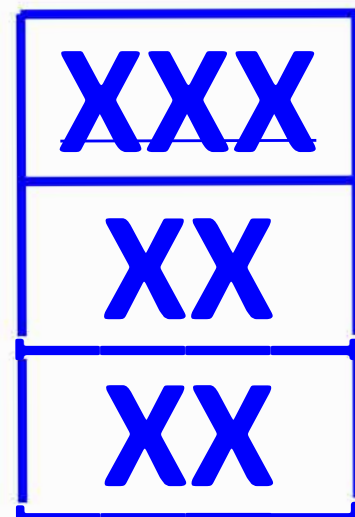


Intersection Traffic Volumes (Vehicles)
Volume de la circulation aux intersections (véhicules)

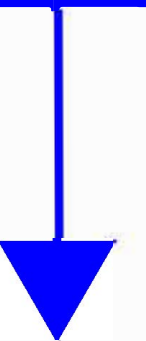
Daily
Quotidien

AM Peak (8-9AM)
Matin, heure de pointe (8 h à 9 h)

PM Peak (5-6PM)
Soir, heure de pointe (17 h à 18 h)

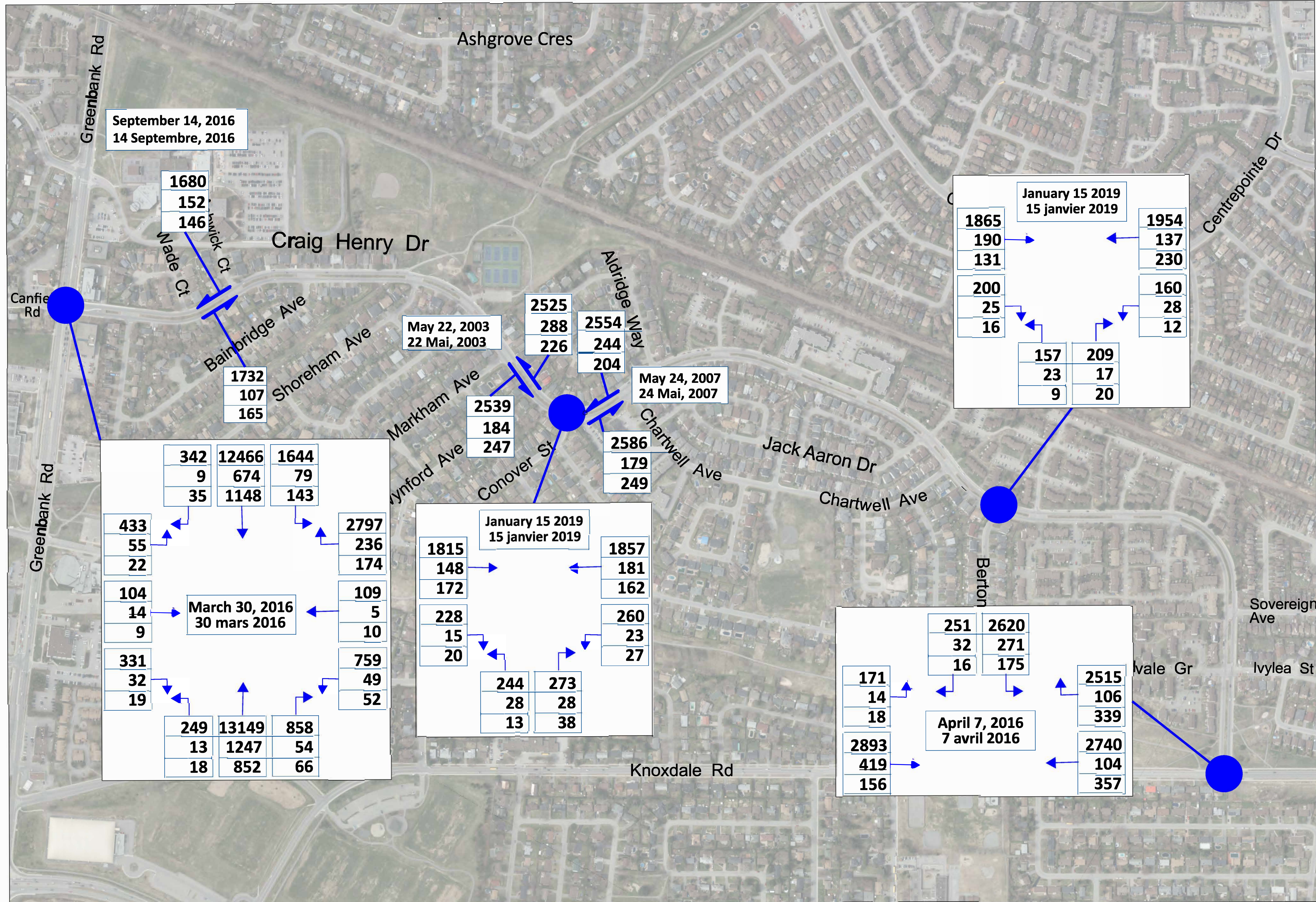


Direction
Sens



Survey Date
Date du relevé

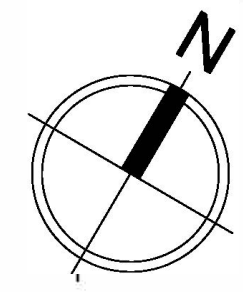
Month Day, Year
journée mois an



Craig Henry Drive Area Traffic Management Study Étude de gestion de la circulation locale sur la promenade Craig Henry

Collisions | Collisions

LEGEND/LÉGENDE



Total number of collisions (2016-2018) **X**
 Nombre total de collisions (2016-2018)

Number of collisions involving vulnerable road users **(X)**
 Nombre de collisions impliquant des usagers vulnérables de la route

* Vulnerable road users include pedestrians, persons with disabilities, cyclists and in-line skaters

* Les usagers vulnérables de la route sont les piétons, les personnes à mobilité réduite, les cyclistes et les patineurs en ligne

