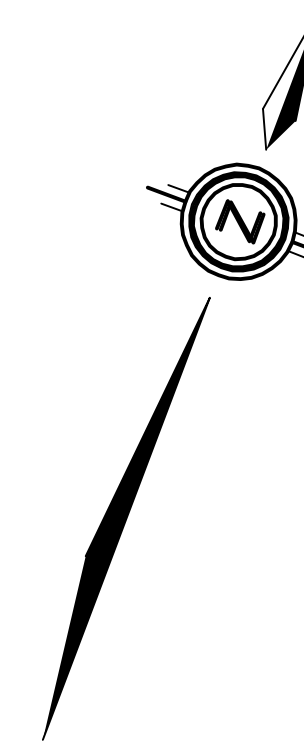
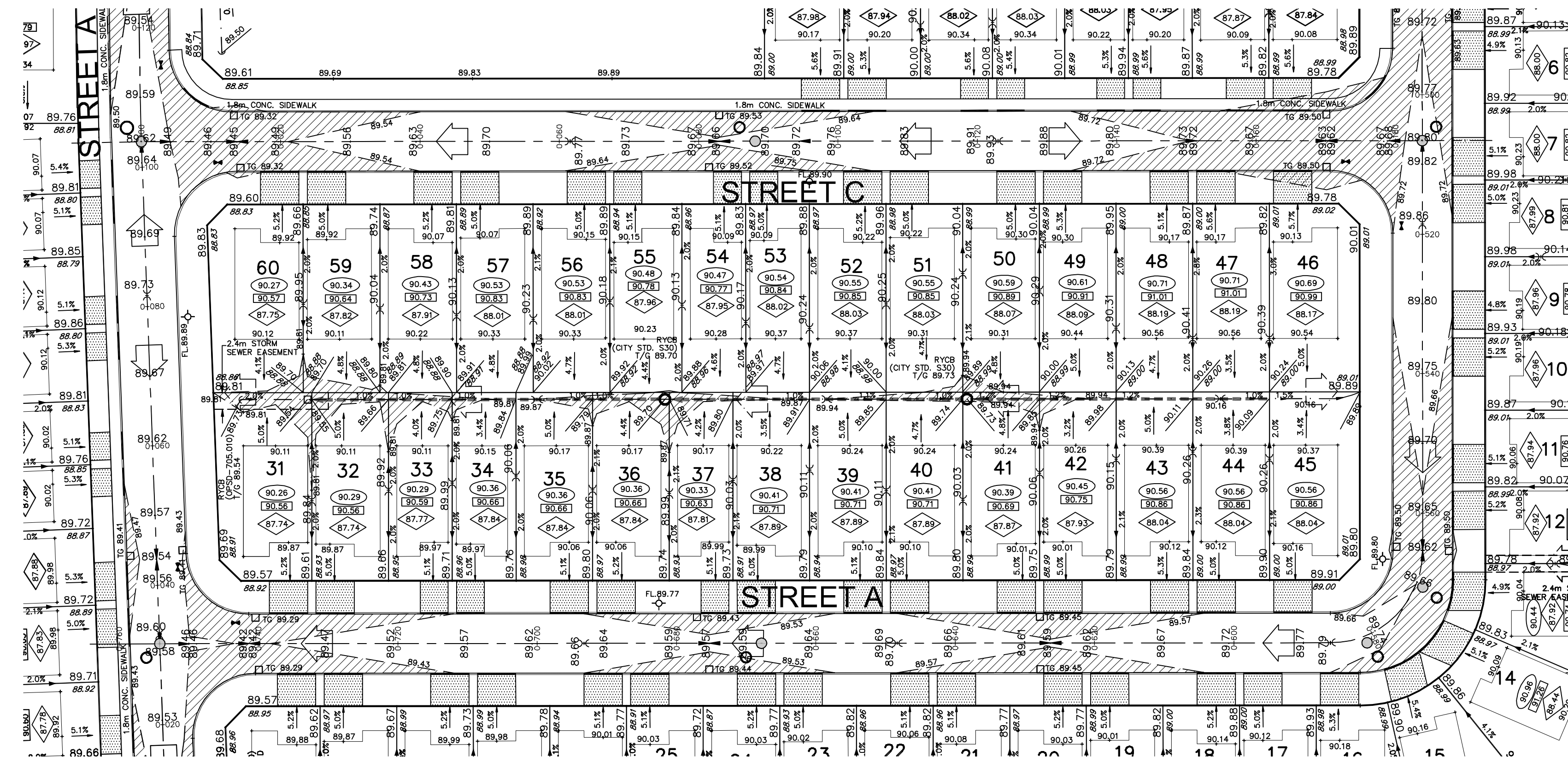


FOR ILLUSTRATION PURPOSES ONLY



KEY PLAN
SCALE 1:8000

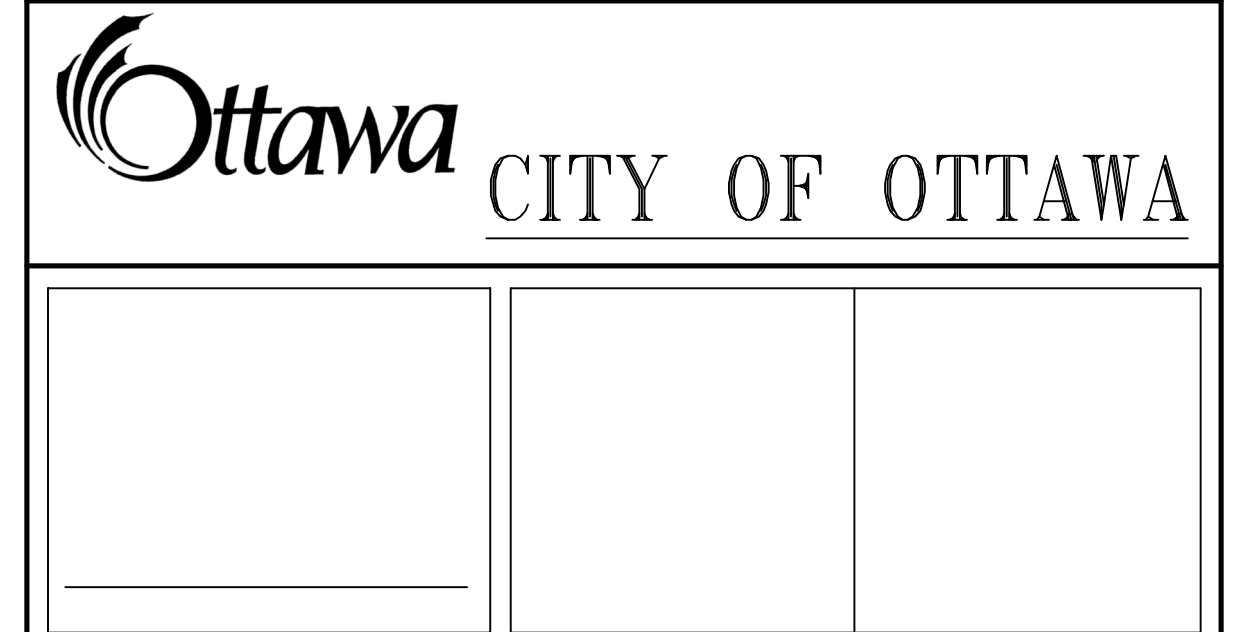


LEGEND

- 103.45 PROPOSED ELEVATION
- 102.73 EXISTING ELEVATION
- 1.5% PROPOSED SWALE GRADE
- X 102.16 HIGH POINT
- CATCHBASIN MANHOLE
- CATCHBASIN
- RYCBS - (PERFORATED PIPE)
(PER CITY STD. S29, S30, S31)
AS NOTED ON THE DRAWING
- FL 94.57 HYDRANT WITH
FLANGE ELEVATION
- BUILDING ENVELOPE
- 94.70 94.70 TOP OF FOUNDATION (TOF)
- 95.00 95.00 FINISHED FLOOR ELEVATION (FFE)
- 92.00 92.00 UNDERSIDE OF FOOTING ELEVATION (USF)
- PRV PRV UNITS REQUIRING WATER PRESSURE REDUCING VALVES
- W.O. W.O. WALKOUT UNITS
- SOG SOG SLAB ON GRADE
- PROPOSED OVERLAND
FLOW DIRECTION
- 103.17M
102.45M
- RETAINING WALL AND ELEVATIONS
- ACOUSTIC FENCE
(SEE LANDSCAPE DWG. FOR DETAILS)
- 3:1 TERRACING MAXIMUM SLOPE
- VALVE & BOX
- PONDING AREA WITH SPILLWAY
ELEVATION (MAXIMUM 0.30m)
- 250# PVC PERFORATED PIPE
(REFER TO CITY STD S29 FOR REAR
YARD TRENCH AND PIPE DETAILS ONLY)
(SUBDRAIN APPLIED FOR SLOPE LESS THAN 1.5%)

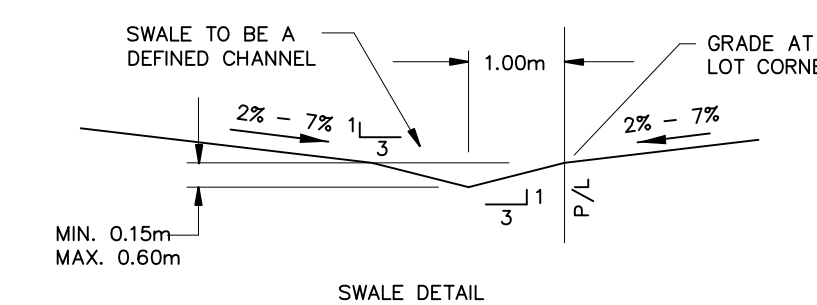
BENCH MARK No. 01919680189
BENCHMARK WAS USED AS OF No. 01919680189 FROM THE NATIONAL CAPITAL COMMISSION SHOWN
AS PER THE SKETCH SHOWN ON DRAWING No. 1
ELEVATION = 88.994 m

No.	BY	DATE	DESCRIPTION	BY



GRADING PLAN

GRADING NOTES:
AS REQUIRED



TYPICAL GRADE CONTROL SWALE
N.T.S.

DRAWN BY:	CHECKED BY:	DRAWING NO.	SHEET NO.
DESIGNED BY:	CHECKED BY:		1
SCALE: 1:500	DATE:		