



Findlay Creek Drive Simplified Traffic Calming Conceptual Plan

Interactions 

 Learn more

Not shown:
• Painted bike lanes 



 Sets of speed cushions (6 locations)



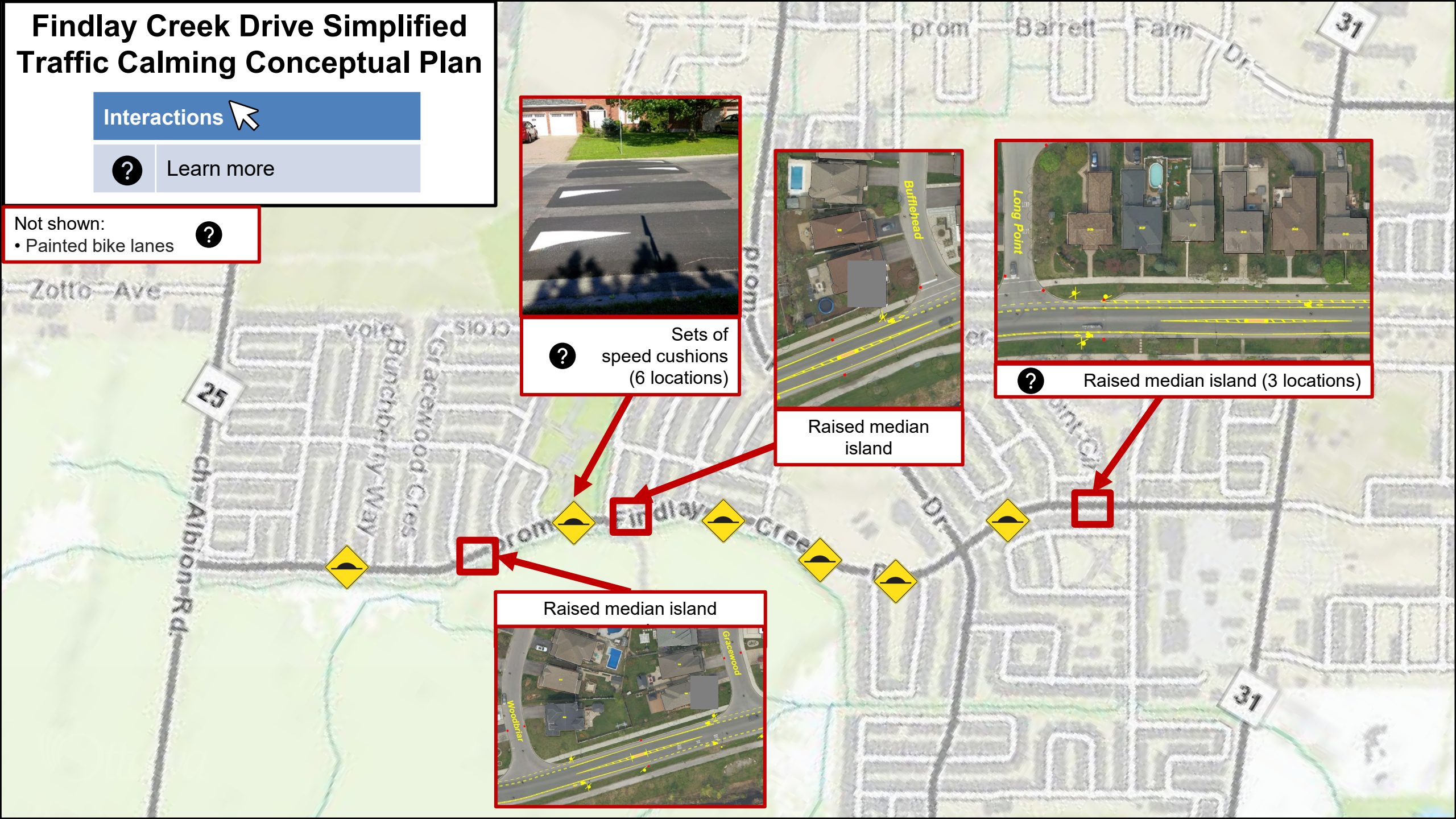
Raised median island



 Raised median island (3 locations)



Raised median island



Speed cushions Speed cushions are raised areas, similar to speed humps, but not covering the entire width of the road. They are designed to allow larger vehicles to “straddle” the cushions, while smaller vehicles experience a vertical upward movement when travelling over them.

PROS

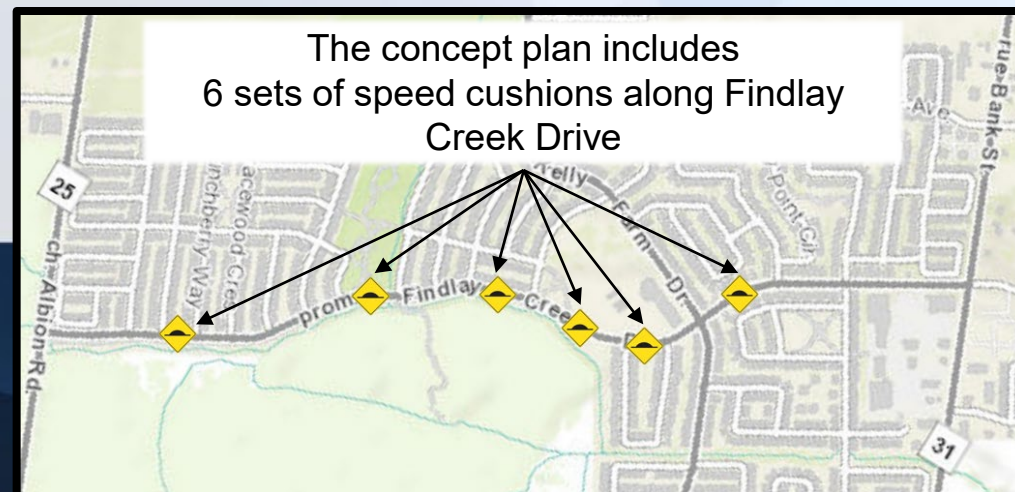
- Reduces vehicle speeds at / near measure
- Self-enforcing

CONS

- May increase traffic induced noise and vibrations
- May impact emergency response activities
- May increase vehicle travel time
- May cause discomfort to bus users and drivers



View a road with speed cushions in Ottawa on Google Street View



Click here to go back to the Concept Plan

Painted Bike Lanes are reserved cycling lanes delineated with pavement markings and roadside regulatory signage.

PROS

- Continuity in the cycling network
- Visually narrows the roadway
- May reduce cyclist-vehicle conflict
- Creates buffering for vulnerable road users from motor traffic
- May improve visibility for all road users
- May reduce vehicle speeds
- No impacts on emergency services

CONS

- Removal of all on-street parking



View a road with painted bike lanes in Ottawa on Google Street View



Click here to go back to the Concept Plan

Raised median islands are elevated medians constructed on the centreline of a two-way roadway to reduce the overall width of adjacent travel lanes.

PROS

- Reduces width of lanes to reduce vehicle speeds.
- Can reduce vulnerable road user exposure to traffic by providing a refuge.
- No significant impacts on emergency services.
- No impact to vehicular access.

CONS

- Cyclists can feel “squeezed”.
- May increase vehicle speeds if lanes remain wide.



How to share your feedback

Milestone	Approximate Timeline
Online Survey Traffic Calming Concept Plan	Until August 30, 2024
Revise Concept Plan (if required) Final Approval of Concept Plan	Summer 2024
<i>As We Heard It</i> Report Final Webpage Update	Fall 2024
Detailed Design	2025
Construction	Currently anticipated for 2026



Fill out the online survey by August 30, 2024



Email your questions or comments to our team

