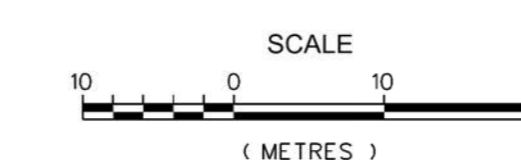
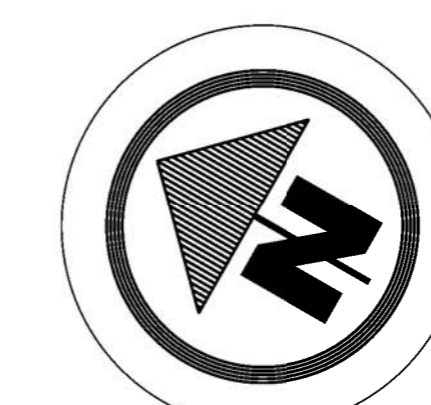
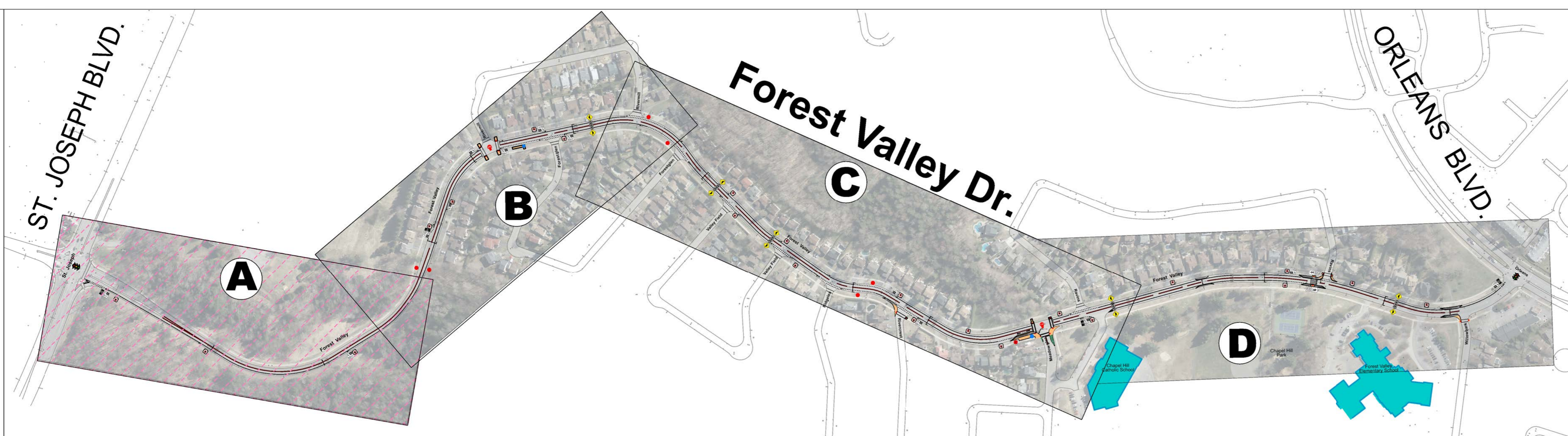




LEGEND	
	REMOVED BUS STOP
	PROPOSED BUS STOP
	EXISTING BUS STOP
	TRAFFIC SIGNAL
	ALL WAY STOP



Planning, Real Estate
& Economic Dev. Dept.
Transportation Planning



FOREST VALLEY DRIVE

Forest Valley Drive Traffic Calming Study

ST. JOSEPH BLVD. TO ORLEANS BLVD.

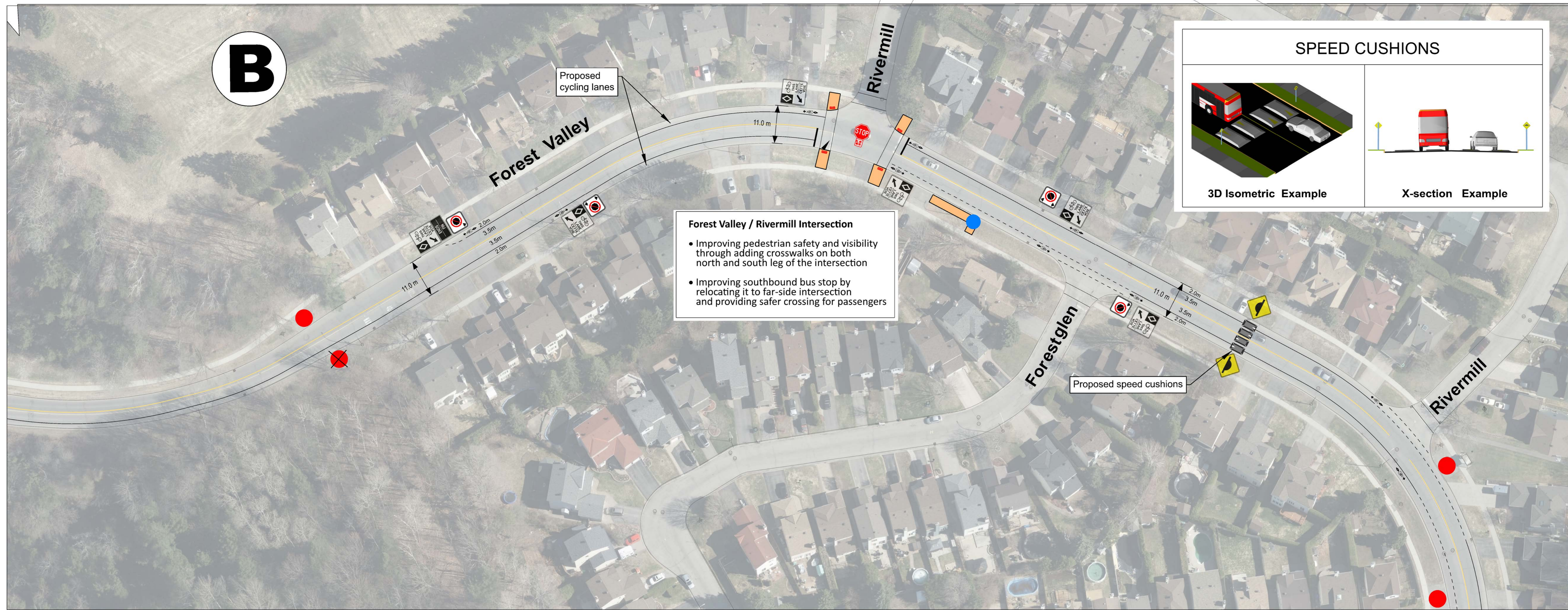
Neighbourhood Traffic Calming

Reviewed By:	Mahsa Sharbaf
Completed By:	Ken Taylor
Scale:	Date:
NTS	02/02/2022

Drawing No.:

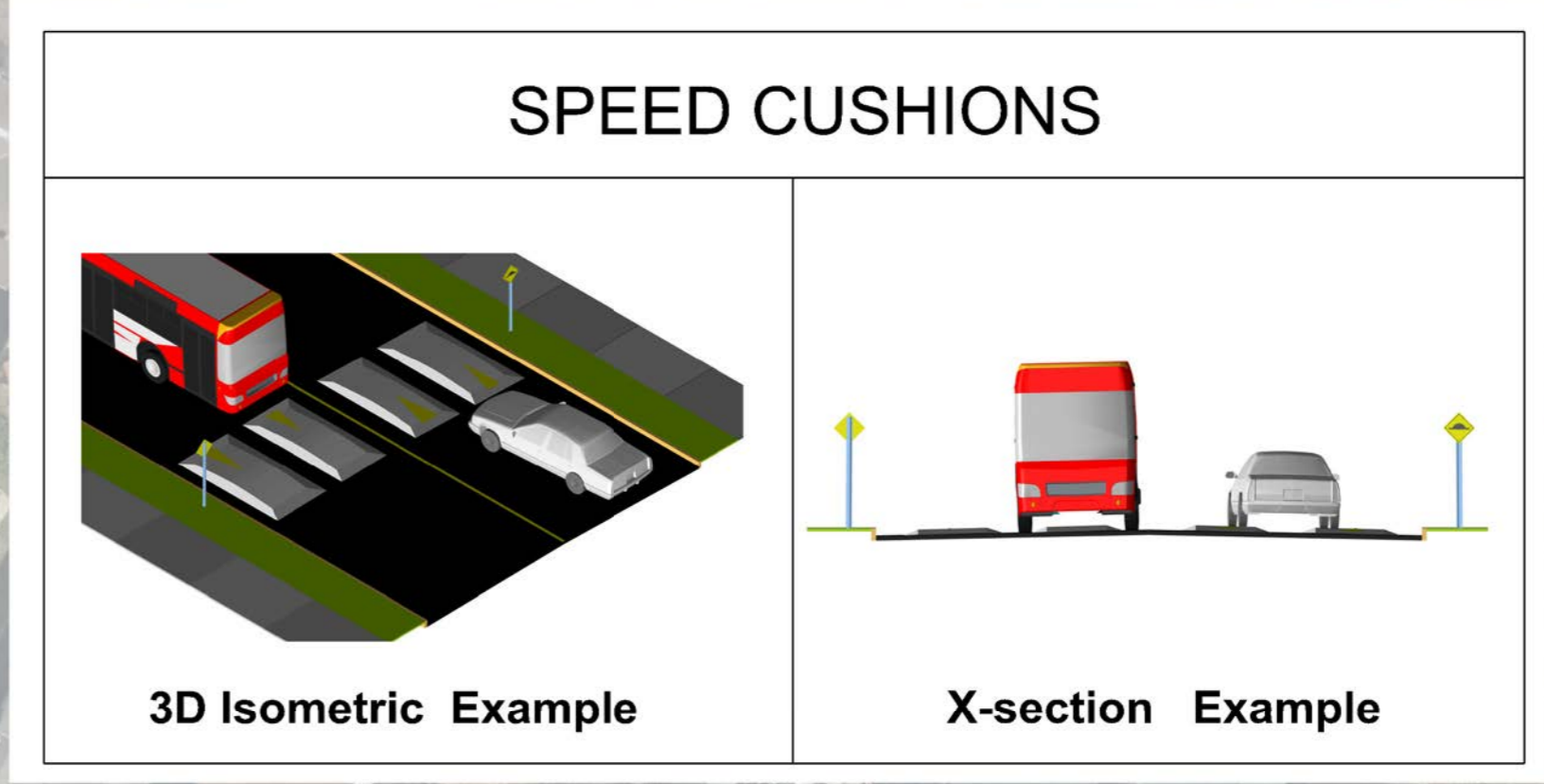
A

Sheet 1 of 4



Forest Valley / Rivermill Intersection

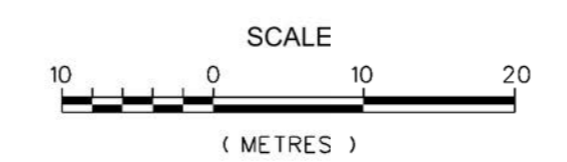
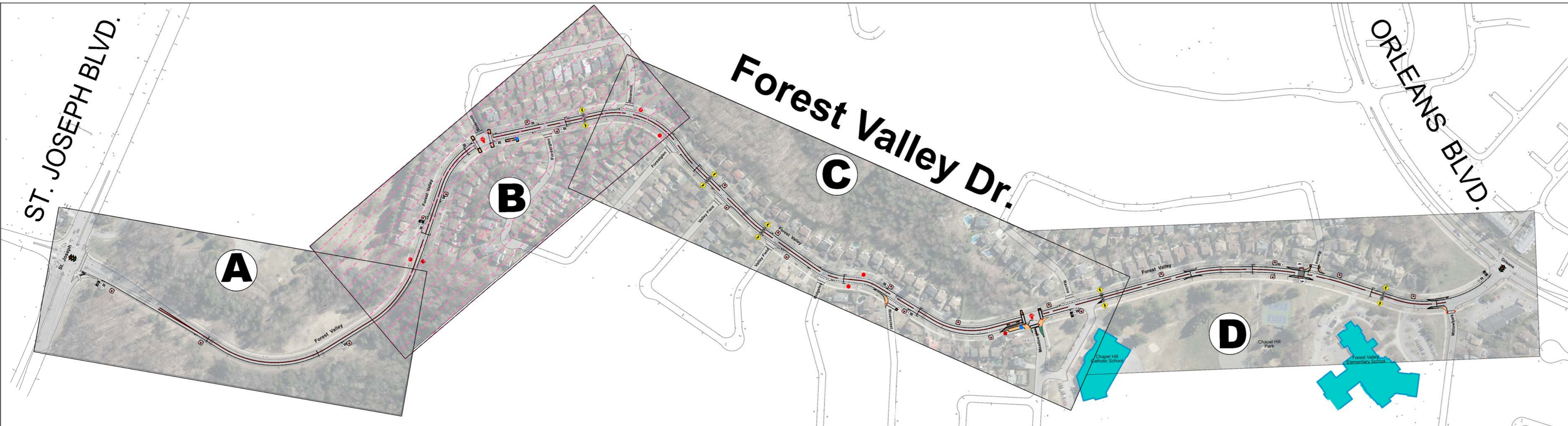
- Improving pedestrian safety and visibility through adding crosswalks on both north and south leg of the intersection
- Improving southbound bus stop by relocating it to far-side intersection and providing safer crossing for passengers



LEGEND	
	REMOVED BUS STOP
	PROPOSED BUS STOP
	EXISTING BUS STOP
	TRAFFIC SIGNAL
	ALL WAY STOP



Planning, Real Estate & Economic Dev. Dept.
Transportation Planning



FOREST VALLEY DRIVE

Forest Valley Drive Traffic Calming Study

ST. JOSEPH BLVD. TO ORLEANS BLVD.

Neighbourhood Traffic Calming

Reviewed By: Mahsa Sharbaf

Completed By: Ken Taylor

Scale: NTS

Date: 02/02/2022

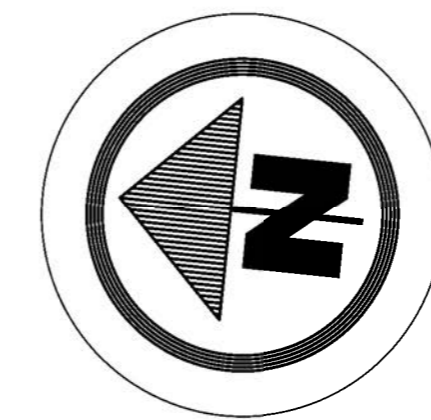
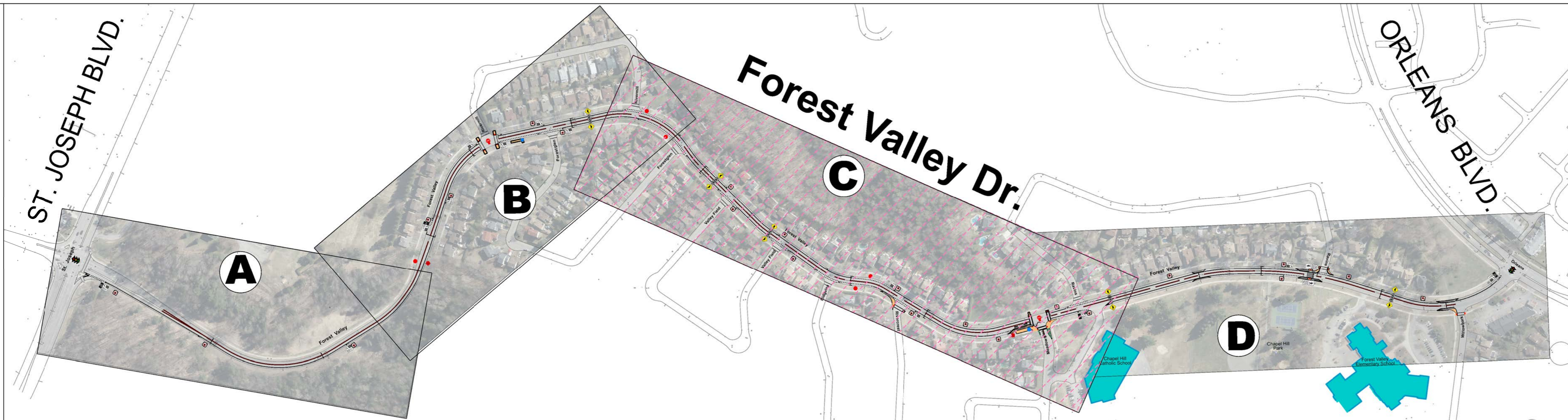
Drawing No.:

B

Sheet 2 of 4



Planning, Real Estate
& Economic Dev. Dept.
Transportation Planning



SCALE
0 10 20
(METRES)

FOREST VALLEY DRIVE

Forest Valley Drive Traffic Calming Study

ST. JOSEPH BLVD. TO ORLEANS BLVD.

Neighbourhood Traffic Calming

Reviewed By:
Mahsa Sharbaf

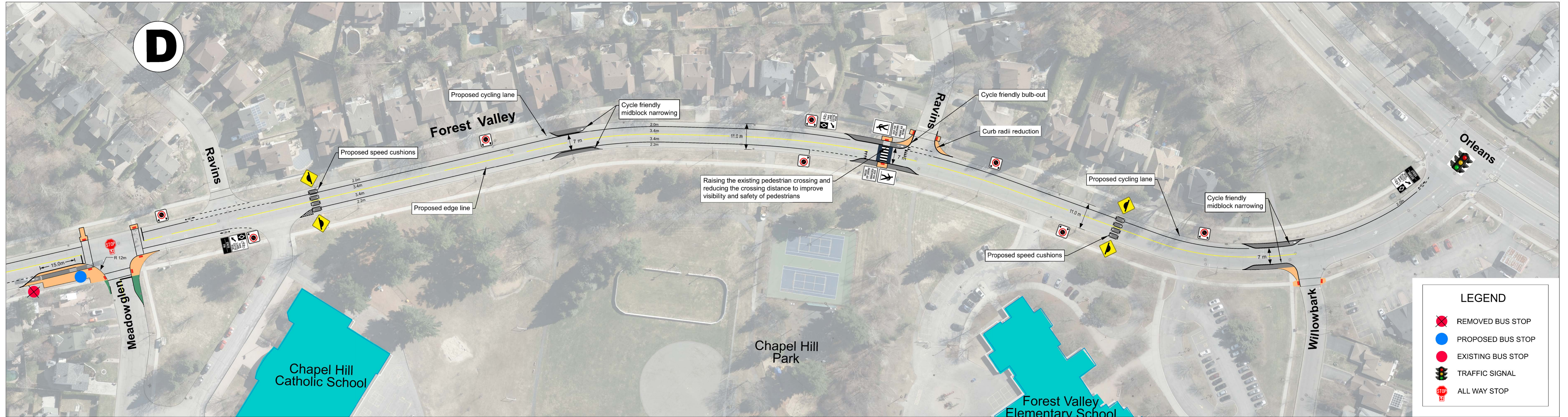
Completed By:
Ken Taylor

Scale: NTS
Date: 02/02/2022

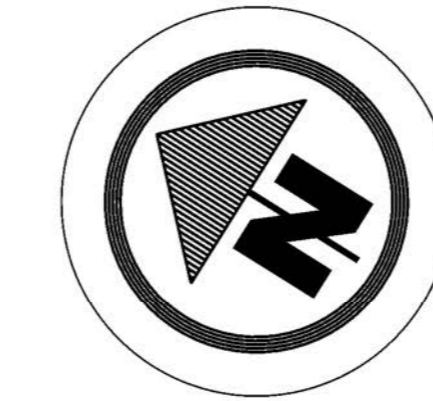
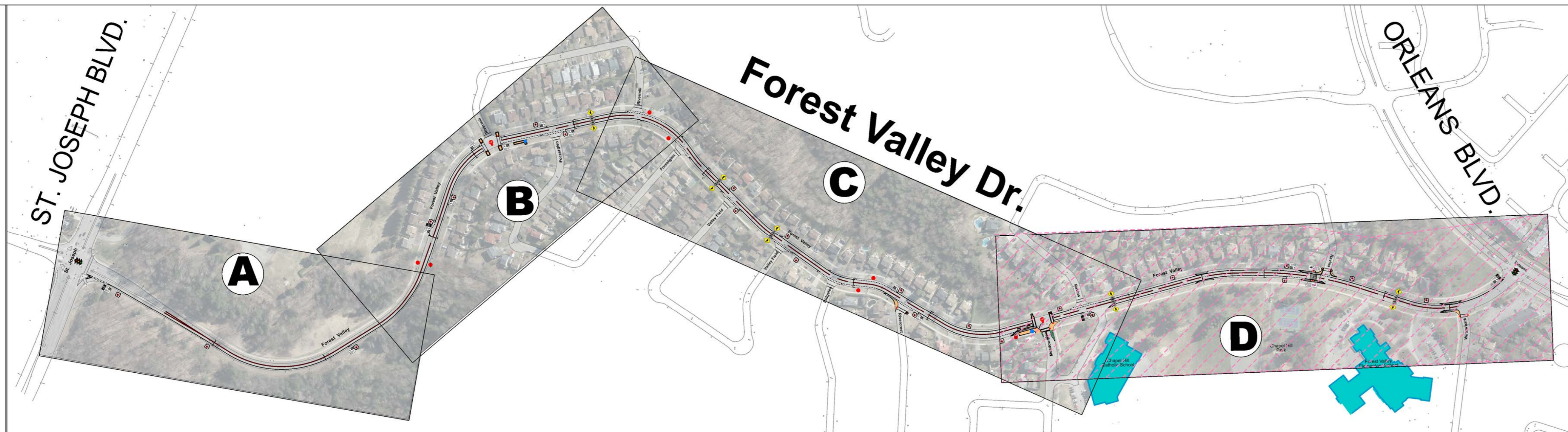
Drawing No.:

C

Sheet 3 of 4



Planning, Real Estate
& Economic Dev. Dept.
Transportation Planning



SCALE
0 10 20
(METRES)

FOREST VALLEY DRIVE

Forest Valley Drive Traffic Calming Study

ST. JOSEPH BLVD. TO ORLEANS BLVD.

Neighbourhood Traffic Calming

Reviewed By:
Mahsa Sharbaf

Completed By:
Ken Taylor

Scale: NTS
Date: 02/02/2022

Drawing No.:

D

Sheet 4 of 4