

# Integrated renewal: Marquette, Longpré, St-Monique and des Pères-Blancs

Contract No. CP001002



Public information session #2:  
February 18, 2025

# Land acknowledgement

We recognize that Ottawa is located on unceded territory of the Anishinabe Algonquin Nation.

We extend our respect to all First Nations, Inuit and Métis peoples for their valuable past and present contributions to this land.

We also recognize and respect the cultural diversity that First Nations, Inuit and Métis people bring to the City of Ottawa.

# Welcome

**Welcome to the second public information session for the Integrated Renewal: Lebrun, Longpré, Marquette, Michel, des Pères-Blancs and Ste-Monique project.**

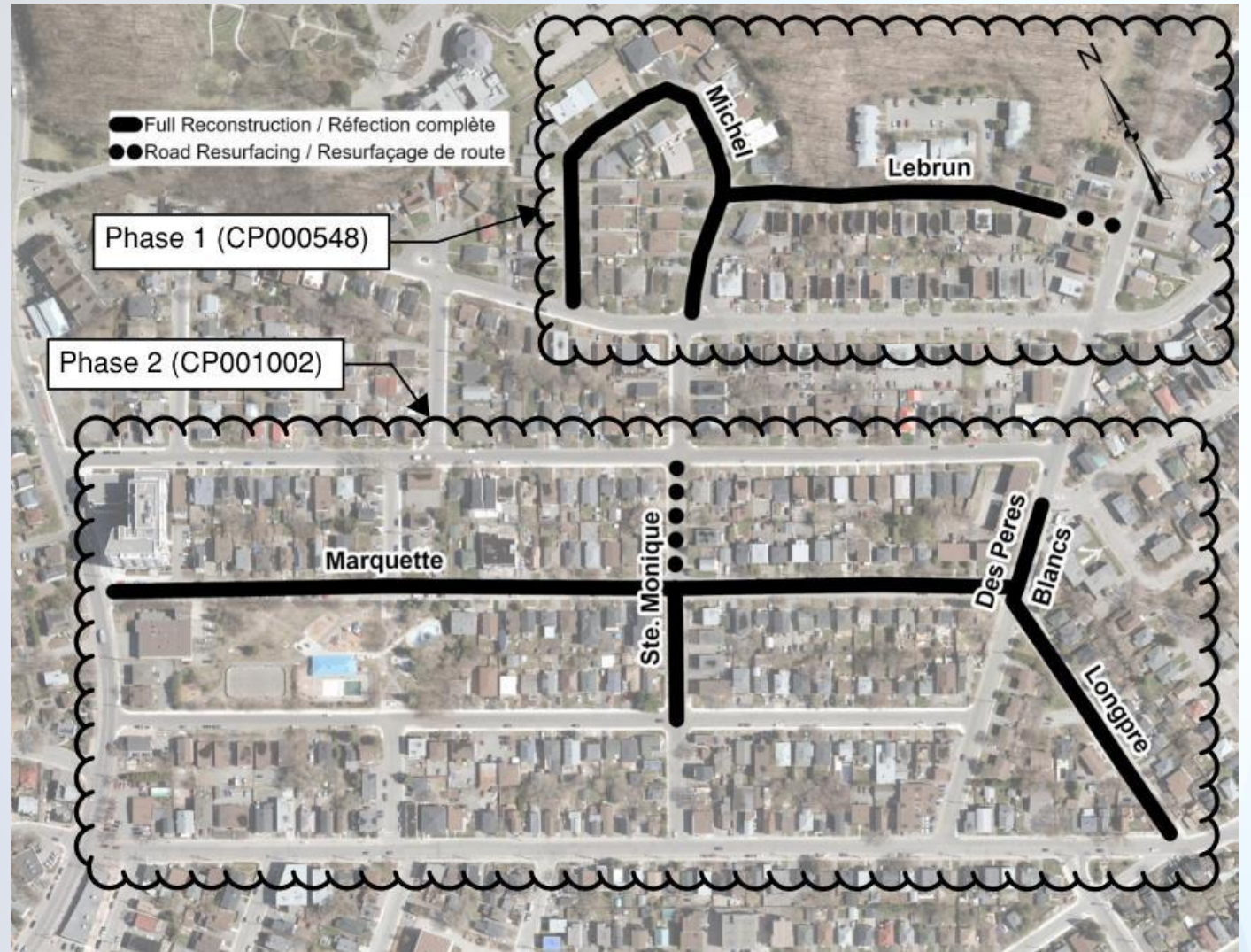
We encourage you to provide your comments via the online form or in writing using one of the comment sheets provided.

Please deposit completed comment sheets in the box provided or complete the [online form](#) by **March 4, 2025**.



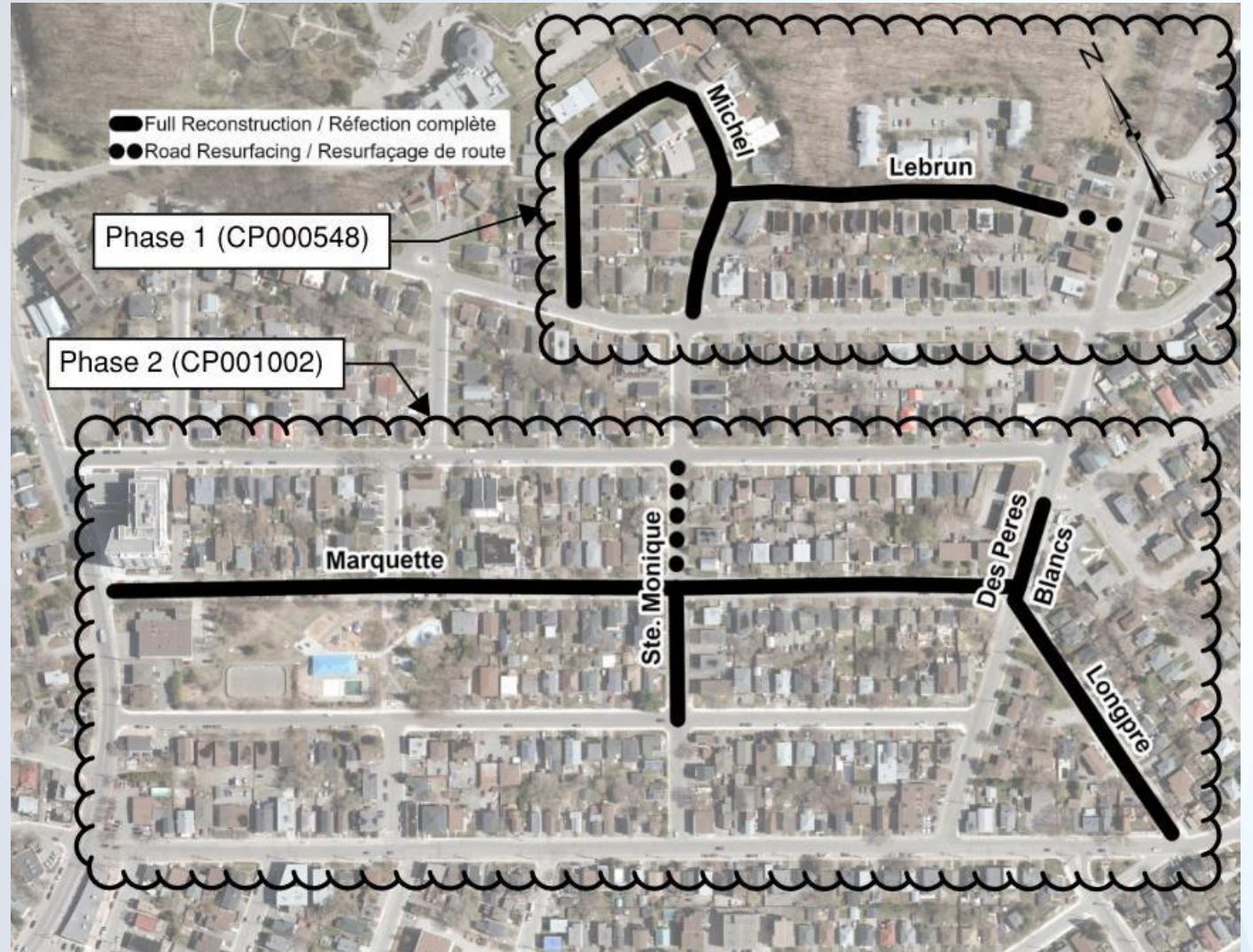
# Phase 1 Project limits

- Michel Circle (Lavergne Street to Lavergne Street)
- Lebrun Street (Michel Circle to des Pères-Blancs Avenue)



# Phase 2 Project limits

- Marquette Avenue (Beechwood Avenue to des Pères-Blanc Avenue)
- Ste-Monique Street (Ste-Cécile Street to Jolliet Avenue)
- des Pères Blanc Avenue (Longpré Street to St-Jacques Street)
- Longpré Street (des Pères-Blanc Avenue to Marier Avenue)



# Background information

- Existing unlined cast iron watermain within the project limits were built in between 1922 and 1950 and require replacement due to their age (except Lebrun Street which was reconstructed in 1997).
- Existing sanitary sewers were built between 1963 and 1966. They are approaching the end of their life cycle and require replacement and resizing.
- Existing storm sewers were built between 1963 and 1964. They are approaching the end of their life cycle and require replacement and resizing (except Ste-Monique Street, part of Marquette Avenue, and part of Michel Circle where the storm sewers are in good condition).
- All underground works in Lebrun street were completed in 2024 with a portion of underground works on Michel Circle from Lavergne Street to Lebrun Street.

# Project overview

The City of Ottawa plans to replace the watermains, sanitary sewers, and select portions of storm sewers throughout the project limits.

The streets will be fully reconstructed with new asphalt, catch basins, concrete curbs and sidewalks.

The project will also incorporate several new traffic calming features such as mid-block narrowings, speed humps and raised crosswalks and intersections at strategic locations.

# Public Art

One percent of the capital construction budget of this project will be transferred to a dedicated Public Art Fund specifically created and identified for Public Art project following annual Council approval of the Capital Budget.

The Public Art Fund covers all aspects of commissions including project management, artists' fees, the execution, installation, interpretation, maintenance and conservation of Public Art projects.

More information regarding the City's Public Art Program and Public Art Fund can be found at:

[Public Art Program | City of Ottawa](#)



# Traffic management during construction

- Throughout construction there will be temporary disruptions to traffic flow; however, local traffic access will be maintained.
- Road closures with local traffic access will be required throughout the project. A detour plan will be prepared prior to construction.
- Short term driveway access restrictions will be required when construction work is in front of a driveway. When driveway access is not possible, on-street parking passes will be provided to residents.
- To allow the work to be completed in a timely manner, on-street parking may be prohibited during the construction period in specific areas. During these times, parking will be permitted in other areas of the project and on side streets. Signs will be placed 24 hours in advance indicating any parking prohibition.

# Traffic management during construction

- Weekend work (up to 5 weekends) will be required at the intersection of Beechwood Avenue and Marquette Avenue to complete the proposed works within the intersection. Access to Marquette Avenue from Beechwood Avenue will be restricted during this time.

# Pedestrians and cyclists

- Accessibility is an important consideration for the City, and we will make every effort to provide access through and around the construction zone. Pedestrian access to homes will be always maintained. Please contact the project team if you require a disability-related accommodation during construction.
- Cycling access is an important consideration for the City. At times, cyclists may be required to be detoured around construction, or they may have to dismount and walk.

# Construction impacts

## Landscaping features and private property

- Water and sanitary services are to be replaced up to the property line. The contractor will do their best to limit impacts to the existing landscaping and vegetation.
- Any disrupted landscaping features, driveways and/or walkways will be reinstated. If work is required on private property, the homeowner will be notified in advance.

## Tree protection

- Preserving and limiting impacts to existing trees is extremely important to the City.
- Tree protection will be installed at the beginning of construction. Pruning may be required prior to construction to help protect the trees from damage.

# Construction impacts

## Lawn irrigation systems

- If you own a lawn irrigation system, please notify the City's Project Manager, [Frédéric Lacasse](#), so that the project team can be aware during construction of sprinkler head and underground piping locations.

## Noise

- Activity on this project will generate general construction noise. The City of Ottawa Noise By-law (2017-255) allows construction activity to occur:
  - Weekdays and Saturdays: 7 am to 10 pm
  - Sundays and statutory/public holidays: 9 am to 10 pm
  - The contractor may request an exemption to permit construction outside of these hours

# Construction impacts

## Vibration

- Construction activities will produce low intensity ground vibrations. This is common and unlikely to cause damage to adjacent structures. A vibration monitoring program will be implemented.
- A pre-construction survey will be completed of private properties (subject to property owner approval). Additional details will be provided prior to construction.

## Accessibility

Accessibility is an important consideration for the City and we will make every effort to provide access through and around the construction zone. Pedestrian access to homes will be maintained at all times. Please contact the project team if you require disability-related accommodations during construction.

# Parking during construction

## **Parking**

During construction, parking restrictions will be implemented to provide local residents with parking options. On-street parking passes will be provided to local residents impacted by construction and parking within the project construction limits will be restricted to pass holders only.

On-street parking will not be permitted within the active construction zone(s). Signage will be posted a minimum of 24 hours in advance.

## **Driveway access**

In addition, short term driveway access restrictions will be required when construction is right in front or in proximity of the driveway.

## Lead pipe replacement

Given the maturity of the area, it is possible that you have a lead pipe water service. As part of this project, all residential water services will be replaced to the property line but will not extend the new service onto private property. More details will be provided when construction begins.

Any replacement of services on private property is the responsibility of the homeowner to coordinate with an independent contractor. A City of Ottawa program is available to help subsidize the cost of replacing your lead service. Additional information on the Lead Pipe Replacement Program can be found at the link below:

<https://ottawa.ca/leadpipes>



# Temporary water services

During the watermain reconstruction, your property will be placed on a temporary water service. Residents will be informed of water interruptions 24 hours in advance by the City.

Private fire suppression systems could be impacted. If you have a home/building fire suppression system, it is recommended that you contact a fire protection services company to determine the extent of any impact.



Smaller temporary hose connecting from the main hose to the outside tap /  
Petit tuyau temporaire reliant le tuyau principal et le robinet extérieur

Smaller temporary hose connecting from the main hose to the outside tap /  
Petit tuyau temporaire reliant le tuyau principal et le robinet extérieur

Large temporary hose connected to the watermain /  
Grand tuyau temporaire relié à la conduite d'eau principale



# Private approach (By-law No. 2003-447)

## Summary

- A private approach is any entrance, driveway, or pathway connecting private property to a public road.
- Regulated to ensure safety, traffic flow, and infrastructure protection.
- By-Law No. 2003-447 governs design, construction, and maintenance in the City of Ottawa.
- Compliance required for width, location, and materials to meet city standards.

## Conclusion

- Compliance with By-Law No. 2003-447 to be reviewed as part of this project

# Project schedule

- Design completion: winter 2025
- Construction start: spring 2025
- Construction completion: fall 2027

# Construction phase 1 – fall 2024



# Thank you!

All information/comments received will be maintained on file for use during the design and may be included in design documentation. Except for personal information, all comments will become part of the public record.

Accessible formats and communication supports are available, upon request, at the following link:

[www.ottawa.ca/accessibleformat](http://www.ottawa.ca/accessibleformat)

## **City Project Manager**

Frédéric Lacasse, P. Eng.

Senior Engineer, Infrastructure Projects

City of Ottawa

100 Constellation Drive Ottawa, ON K2G 6J8

Email: [frederic.lacasse@ottawa.ca](mailto:frederic.lacasse@ottawa.ca)

Tel: 613-227-1459