

# Playfair Drive Accelerated Neighbourhood Traffic Calming Study

## ***As We Heard It (AWHI) Report – Fall 2023***

### **Background**

The Playfair Drive Accelerated Neighbourhood Traffic Calming (NTC) study was initiated in response to speeding concerns raised by residents of Playfair Drive. Upon review, a conceptual plan was prepared and proposed the installation of 3 speed humps on Playfair Drive between Delmar Drive and Dunkirk Crescent (east). An online public consultation was undertaken in the fall of 2023 to share the proposed conceptual plan and seek feedback from residents. The survey was available from September 11<sup>th</sup> to September 29<sup>th</sup>, 2023. A total of 140 respondents completed the survey.

This AWHI report contains the results of the online survey.

## Online Survey Results

The results of the online survey are presented in the following section as well as a summary of all comments received through the survey, and by email or phone call.

### Question #1: How comfortable are you with the proposed plan?

Overall, 51% of respondents indicated they were very or somewhat comfortable with the proposed plan while 46% indicated they were very or somewhat uncomfortable. 3% indicated they were neutral. The chart below shows the breakdown of responses to this question.

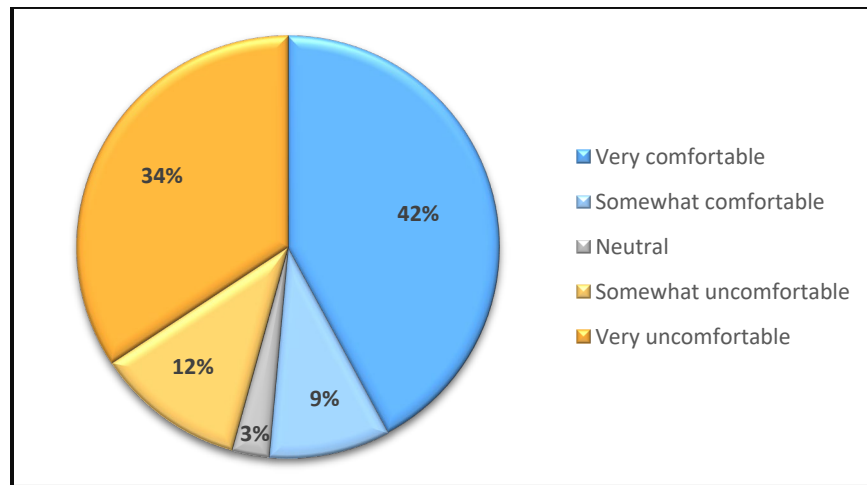


Figure 1: Comfort levels among all survey respondents

- 42% of respondents indicated they were very comfortable
- 9% indicated they were somewhat comfortable
- 3% were neutral
- 12% indicated they were somewhat uncomfortable
- 34% indicated they were very uncomfortable

## Question #2: Where do you live?

The image below (Figure 2) shows the area surrounding Playfair Drive in the vicinity of the proposed plan and is denoted by the blue border.

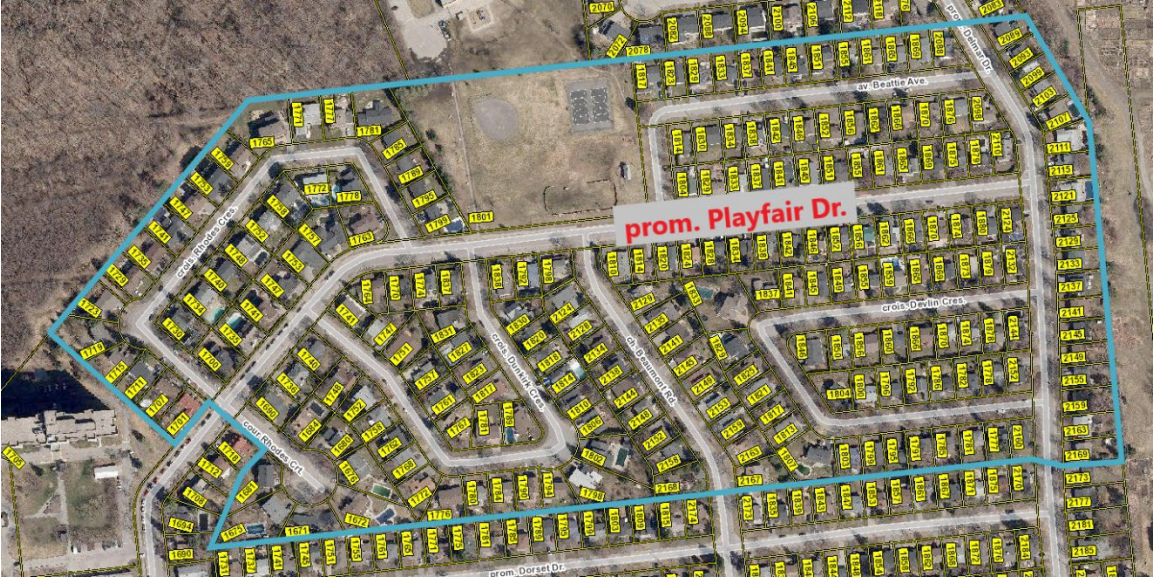


Figure 2: Aerial view of Playfair Drive and neighbouring areas

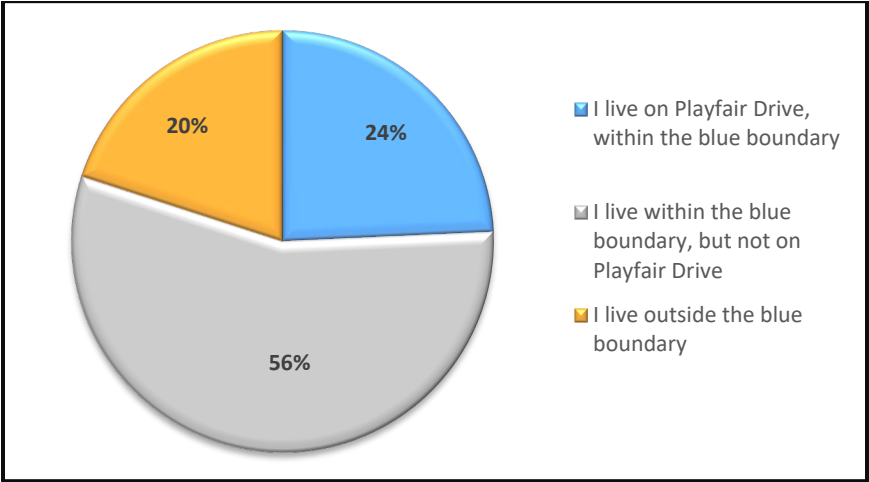


Figure 3: Survey responses by area of residence

- 24% of respondents live on Playfair Drive, within the blue boundary
- 56% of respondents live within the blue boundary, but not on Playfair Drive
- 20% of respondents live outside the blue boundary

## Comfort Levels by Area of Residence

The following chart correlates the comfort levels with the areas of residence of survey respondents.

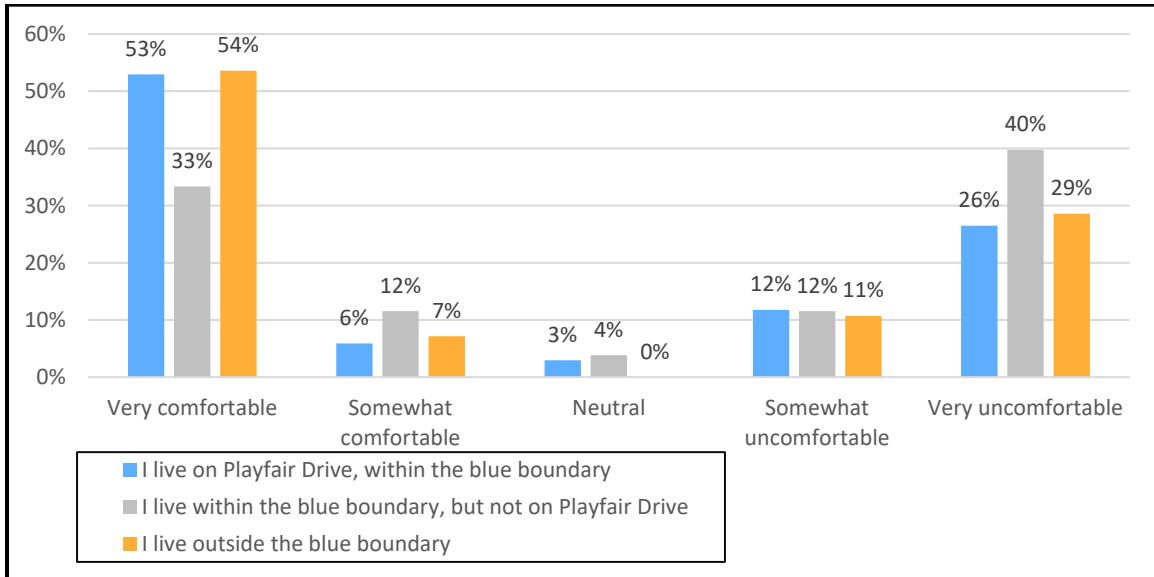


Figure 4: Comfort levels by area of residence

Among residents who live on Playfair Drive within the blue boundary:

- 53% are very comfortable with the proposed plan
- 6% are somewhat comfortable
- 3% are neutral
- 12% are somewhat uncomfortable
- 26% are very uncomfortable

Among residents who live within the blue boundary but not on Playfair Drive:

- 33% are very comfortable with the proposed plan
- 12% are somewhat comfortable
- 4% are neutral
- 12% are somewhat uncomfortable
- 40% are very uncomfortable

Among residents who live outside the blue boundary:

- 54% are very comfortable with the proposed plan
- 7% are somewhat comfortable
- 0% are neutral
- 11% are somewhat uncomfortable
- 29% are very uncomfortable

## Public Commentary

The following table provides a summary of the individual comments received from survey respondents, as well as responses received from residents via phone call or email. The comments have been classified based on the general category of support or concern. It should be noted that some of the received comments fit into more than one category.

Table 1: Open comments classification

Comment Category	Number of Comments
Proposed plan may negatively affect surrounding streets	21
Speeding is an issue on Playfair Drive	19
Against proposed plan/traffic calming in general	17
Support proposed plan/traffic calming in general	14
Do not support speed humps in general	13
Proposed number and/or location of speed humps on Playfair Drive should be modified	9
Traffic calming measures should be installed on other streets in addition to Playfair Drive	7
Measures other than speed humps should be considered on Playfair Drive	6
Existing temporary traffic calming measures (speed board, flex stakes) are enough	5
A more comprehensive study is needed	4
Speed humps have limited effectiveness	4