



# Road Cut Resurfacing Policy

City of Ottawa

Right of Way Branch

March 10, 2022

# Table of Contents

- 1. Introduction .....2
- 2. Resurfacing Requirements .....2
- 3. Resurfacing Scenarios .....5
  - Longitudinal Trenches - Single lane 3 years or less.....6
  - Longitudinal Trenches - Single lane +3 years < or = 1m from the curb.....7
  - Longitudinal Trenches - Multiple lanes, 3 years or less .....8
  - Single Transverse Cut - Single lane, 3 years or less .....9
  - Single Transverse Cut - Multiple lanes, 3 years or less .....10
  - Development Cuts – Multiple Lanes (developments) .....11
  - Intersection Cuts .....12
  - (Road Cuts 1m from) Iron Works .....13

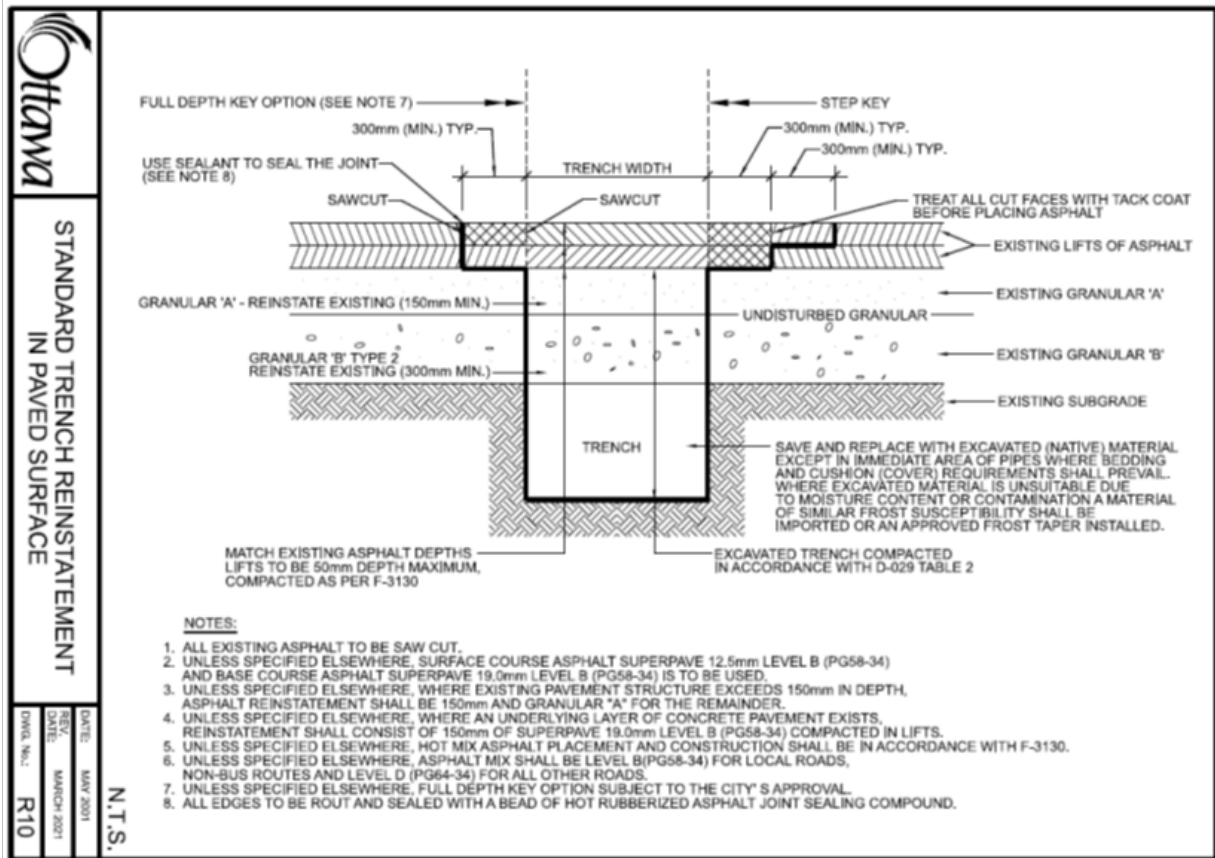
## 1. Introduction

The Road Activity By-Law sets out the reinstatement requirements for all road cuts within the Right of Way administered by the City of Ottawa. This Policy clarifies when the City will require broader asphalt resurfacing beyond the limits set out in the R10 Standard Trench Reinstatement in Paved Surface detail, as authorized in the Road Activity By-Law.

The broader resurfacing requirements set out in this Policy will improve surface rideability and the visual appearances of road cuts on asphalt pavement. The Policy focuses on the resurfacing of road cuts into pavements three (3) years old or less as well as where there are multiple cuts associated with a development. The Policy's goal is to help establish the City's expectations for resurfacing of road cuts. It should be noted that this policy does not limit the discretion of the City to require a broader resurfacing of road cuts not otherwise captured under this policy.

## 2. Resurfacing Requirements

The Road Activity By-Law sets out the requirements for reinstatement, including resurfacing requirements for all road cuts in the City's Right-of-Way (ROW). Where road cuts are made into asphalt pavement of the ROW, Section 12 of the By-law requires that the road cut, including the asphalt be reinstated in accordance with Ontario Provincial Standards Specifications (O.P.S.S.), City of Ottawa Road Standard Detail Drawings and Ottawa Standard Tender Documents. In particular R10 Standard Trench Reinstatement in Paved Surface detail specifies the extent of resurfacing of the asphalt surface.



The By-law, in addition to Section 12, identifies that the City may require a permit holder to place a broader asphalt resurfacing at a depth of 40 mm. The City will require a broader resurfacing in the following circumstances as summarized in Table 1.

Table 1 Broader Asphalt Resurfacing Circumstances:

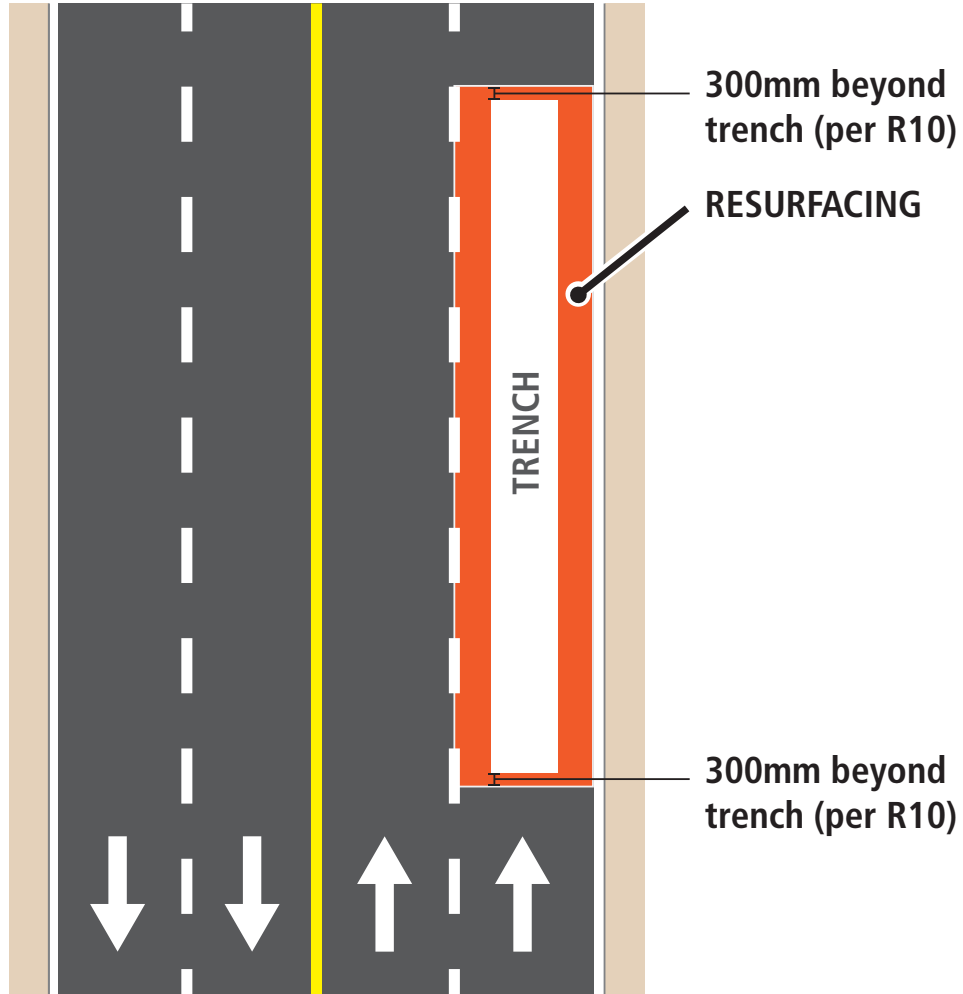
	Circumstance	Action
1.	<p>Road cuts associated with a <b>development</b> within the roadway pavement as part of construction, where there are three (3) or more cuts associated with a development</p> <p>Note: Existing service blankings count as a cut.</p> <p>(see scenario 6)</p>	<p>All cuts within 12 metres of another must be resurfaced as one continuous area.</p>

2.	<p>Road cuts into pavement that has been constructed, reconstructed or resurfaced in the past three years.</p> <p><b>Pavement age of three (3) years or less.</b></p> <p><i>(see scenarios 1, 3, 4, 5)</i></p> <p><b>Note:</b> Cuts into new pavement are not permitted pursuant to subsection 4(12) of the By-Law. Exemptions are generally reserved for the following situations: providing servicing to a property, emergencies, any public work, and major business disruption (Section 4(13)) and will require an exemption to subsection 4(12) from the City.</p>	<p>Asphalt resurfacing will be brought to the nearest lane, centreline, or curb line.</p> <p>If a lane, centreline, or curb line does not align with the construction joint, the resurfacing should be brought to the construction joint.</p>
3.	<p>For all Road Cuts, regardless of the age of the pavement, where the edge of the cut is within one (1) metre of a curb or edge of roadway.</p> <p><i>(see scenarios 2, 7, 8)</i></p>	<p>Must extend resurfacing to the edge of roadway or curb line.</p>

It must be noted that the City may require broader resurfacing requirements on a case-by-case basis. The General Manager reserves the right to exercise the discretion in the best interests of the City.  
*(see scenarios 1, 3, 4, 5, 7)*

### 3. Resurfacing Scenarios

# Longitudinal Trenches – Single Lane



## Circumstance

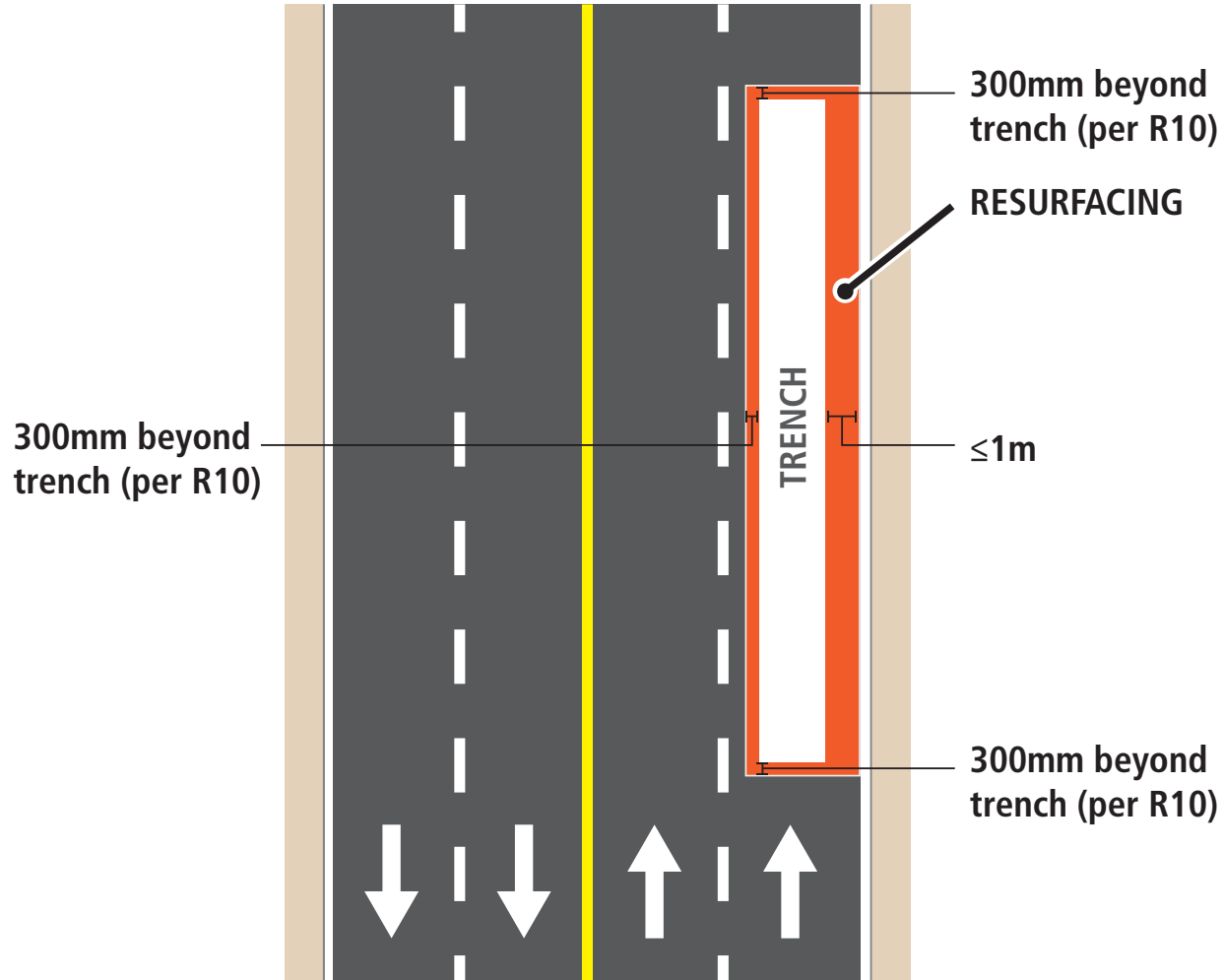
Pavement age three (3) years or less

## Action

Full lane grind and pave, allowing 300mm step key on all sides of permanently repaired road cut by R10 Standard Trench Reinstatement in paved surface.

# Longitudinal Trenches – Single Lane

Trench located  $\leq 1\text{m}$  from curblines



## Circumstance

Pavement age older than three (3) years

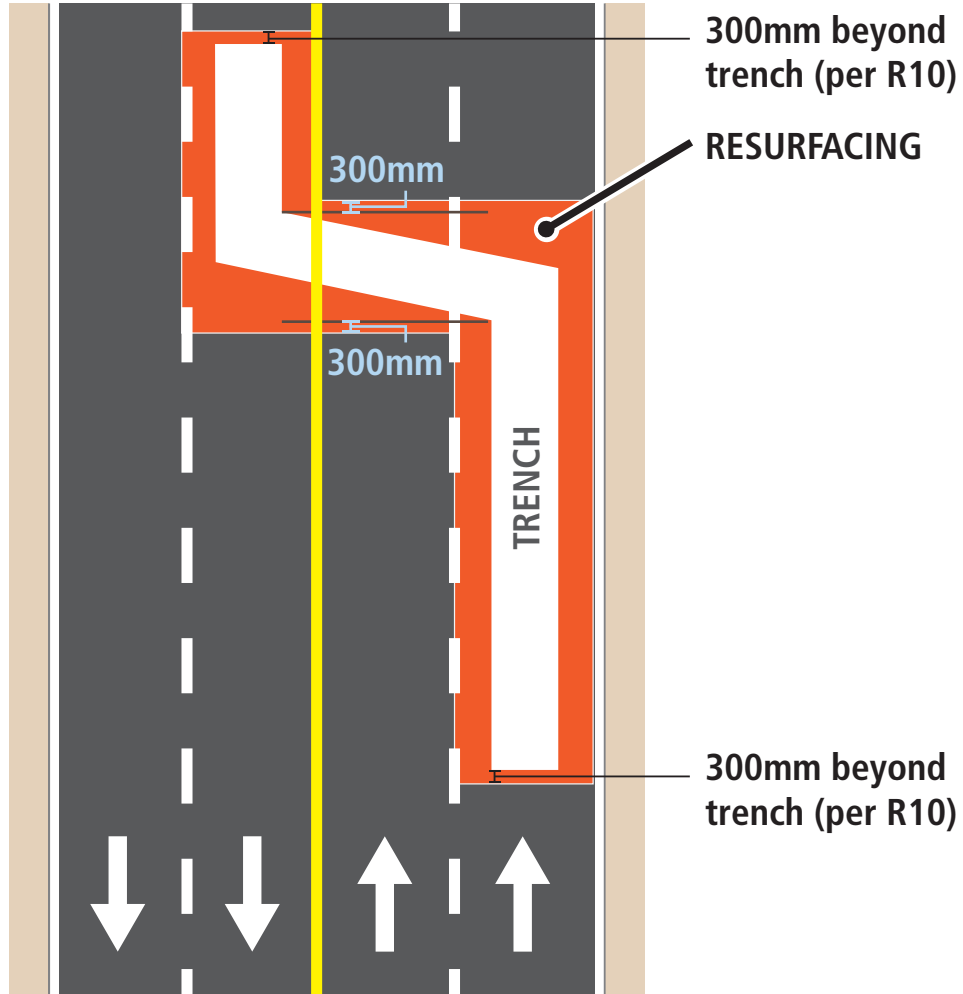
## Action

If a road cut is 1m or less from the curb, resurfacing must extend to the curb. If road cut is 1m from catch basin / iron work, resurfacing must extend to catch basin / iron work (see scenario 8).

Allow for 300mm step key on all sides of permanently repaired road cut by R10 Standard Trench Reinstatement in paved surface.



# Longitudinal Trenches – Multiple Lanes



## Circumstance

Pavement age three (3) years or less

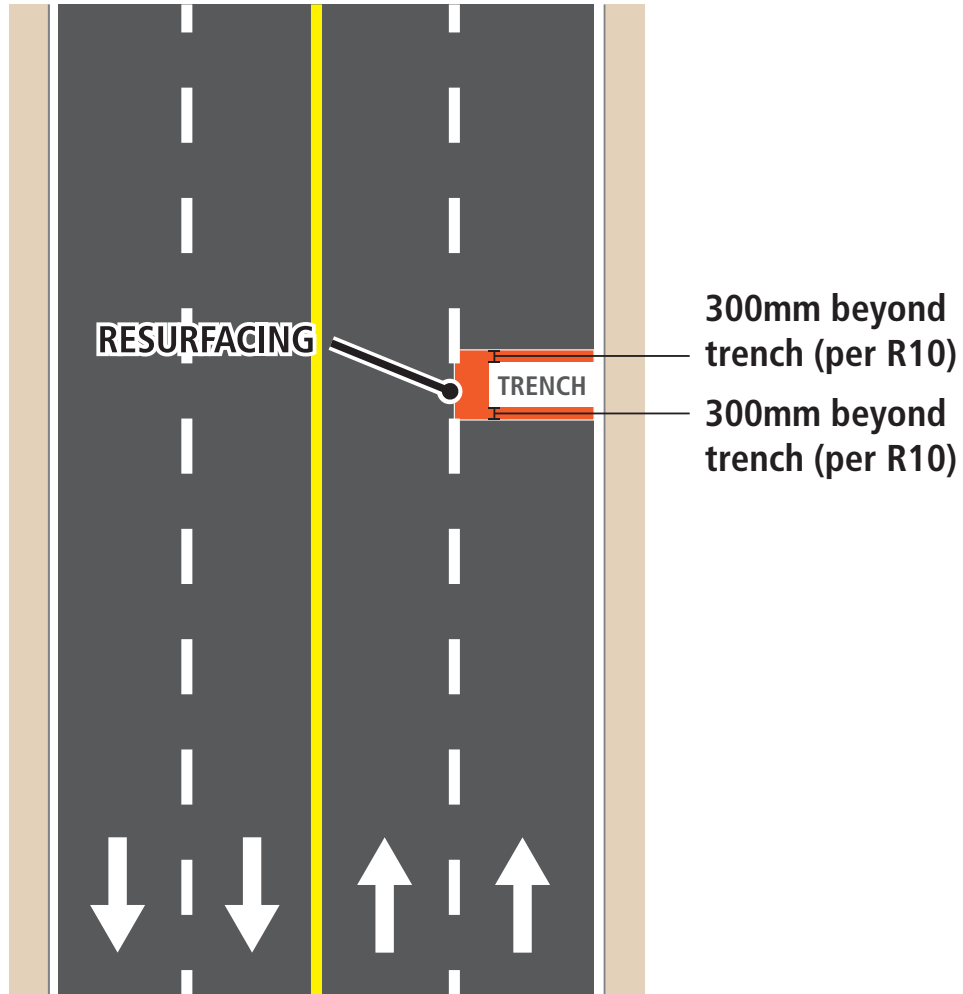
## Action

Grind and Pave required (shown in orange).

Road cuts that cross lanes must be squared off. Allow for 300mm step key on all sides of permanently repaired road cut by R10 Standard Trench Reinstatement in paved surface.

# Single Transverse Cuts – Single Lane

A single transverse cut contained within one lane



## Circumstance

Pavement age three (3) years or less

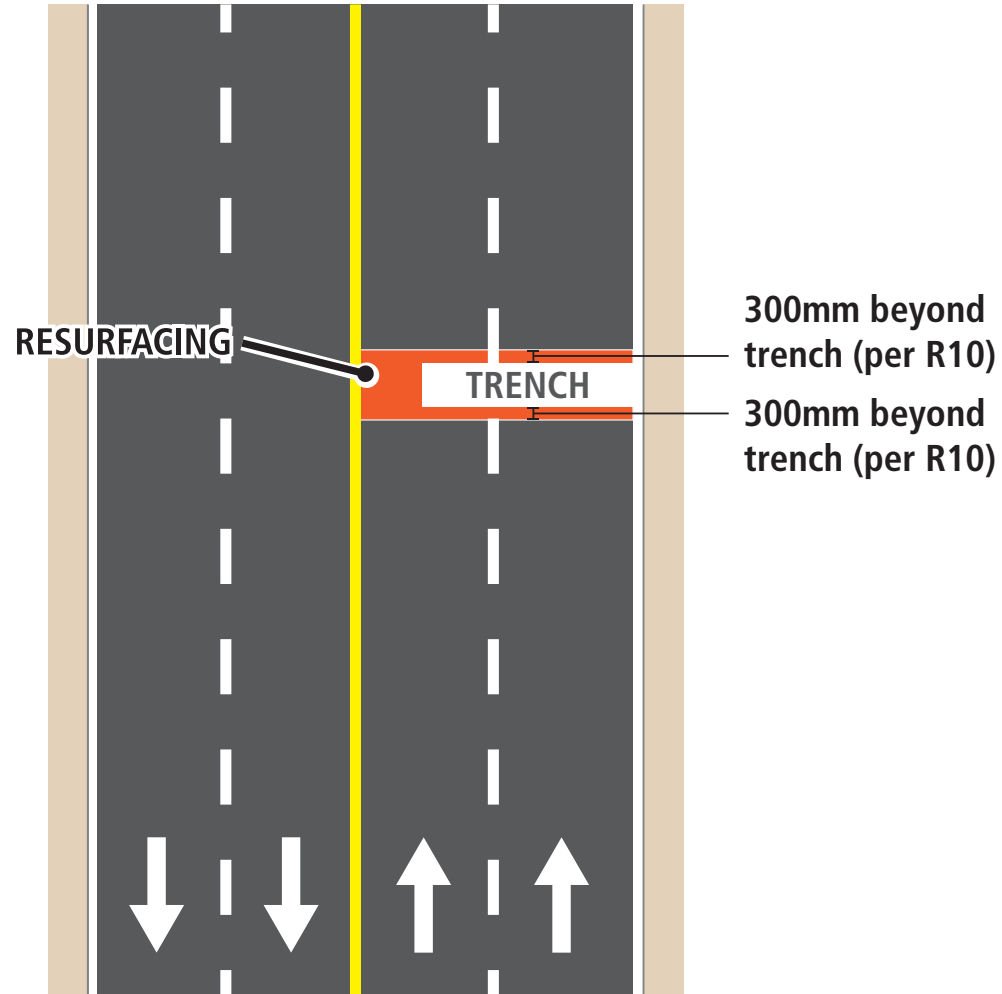
## Action

Full lane and/or centerline grind and pave with 300mm step key allow as per R10 Standard on each side of the road cut (shown in orange).

If road cut is 1m from catch basin / iron work, resurfacing should be brought to catch basin / iron work (see scenario 8).

# Single Transverse Cuts – Multiple Lanes

A single transverse cut extending to more than one lane



## Circumstance

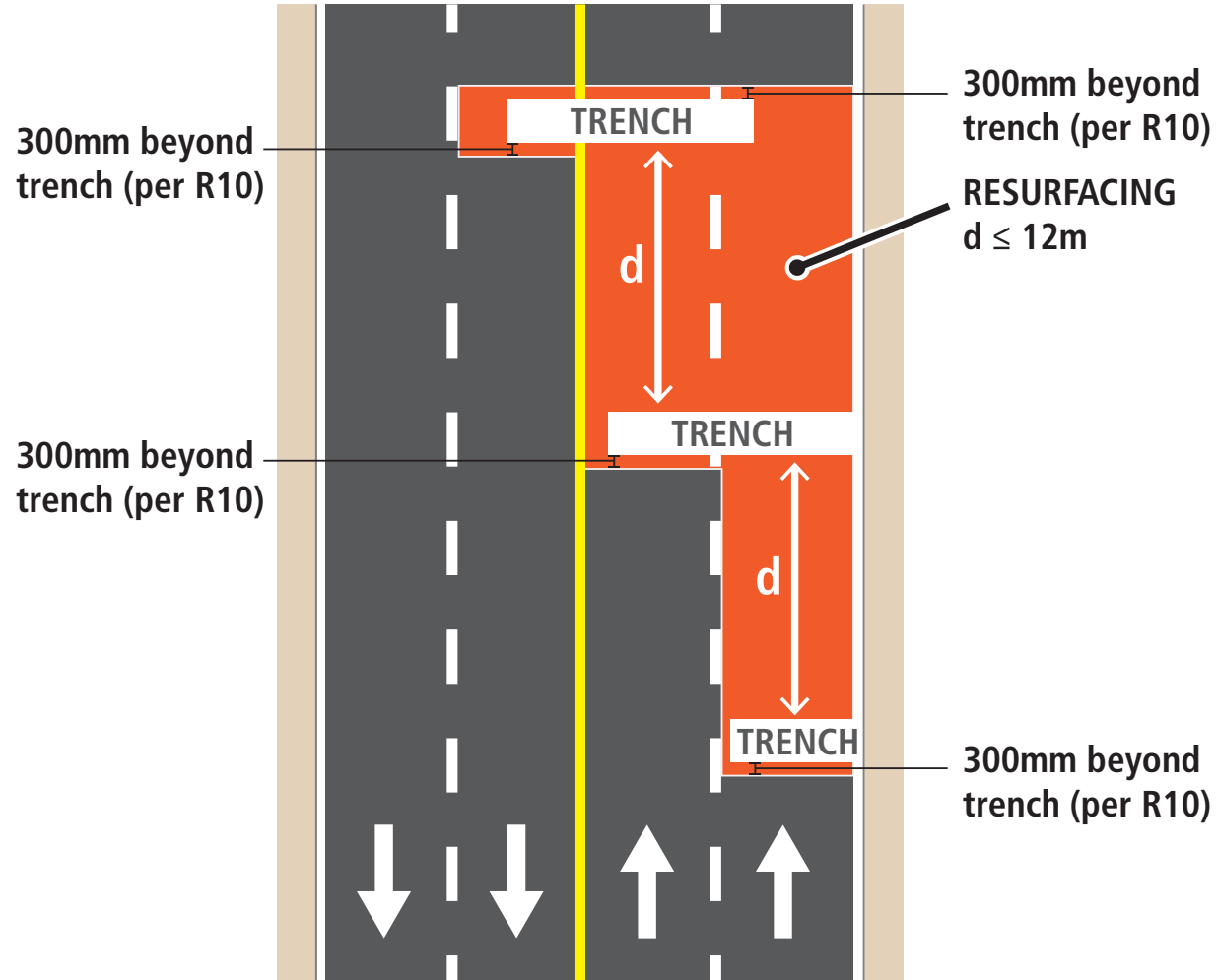
Pavement age three (3) years or less

## Action

If road cut is 1m or less from centerline of visible construction joint, then grind and pave must extend to centerline and or visible construction joint. If cut is 1m or less from catch basin / iron works, then grind and pave must extend to catch basin / iron works (see scenario 8).

Allow for 300mm step key on all sides of permanently repaired cut by R10 Standard Trench Reinstatement in paved surface (shown in orange).

# Development Cuts



## Action

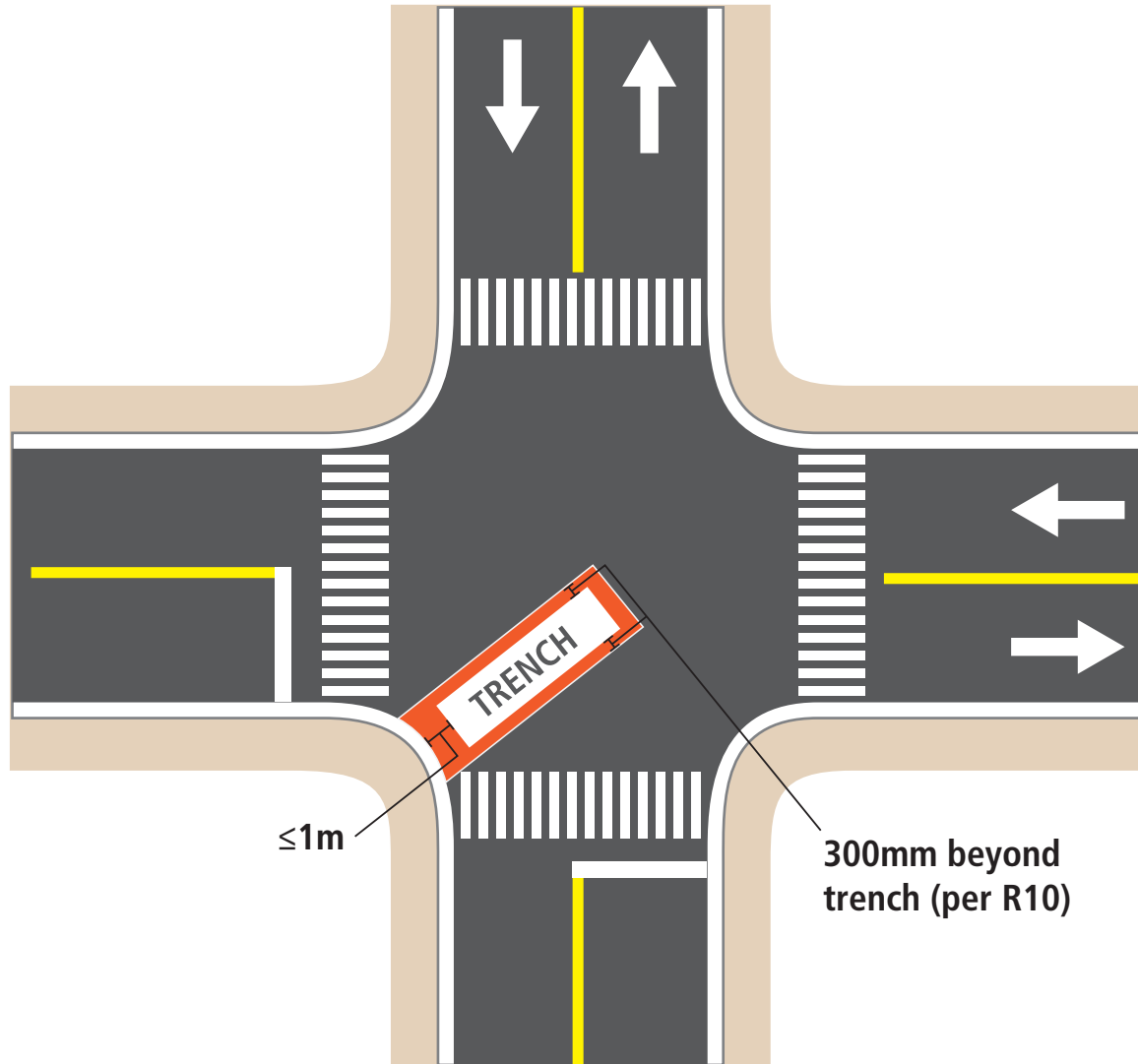
If  $d \leq 12\text{m}$ , continuous resurfacing

If  $d > 12\text{m}$ , separate resurfacing

In both situations, allow for 300mm on either side of the trench as shown.

When three (3) or more cuts are required as part of a development, each road cut within 12 metres of another must be resurfaced together. The extent of the resurfacing will be to the nearest lane line, centreline, or curb of each cut (shown in orange).

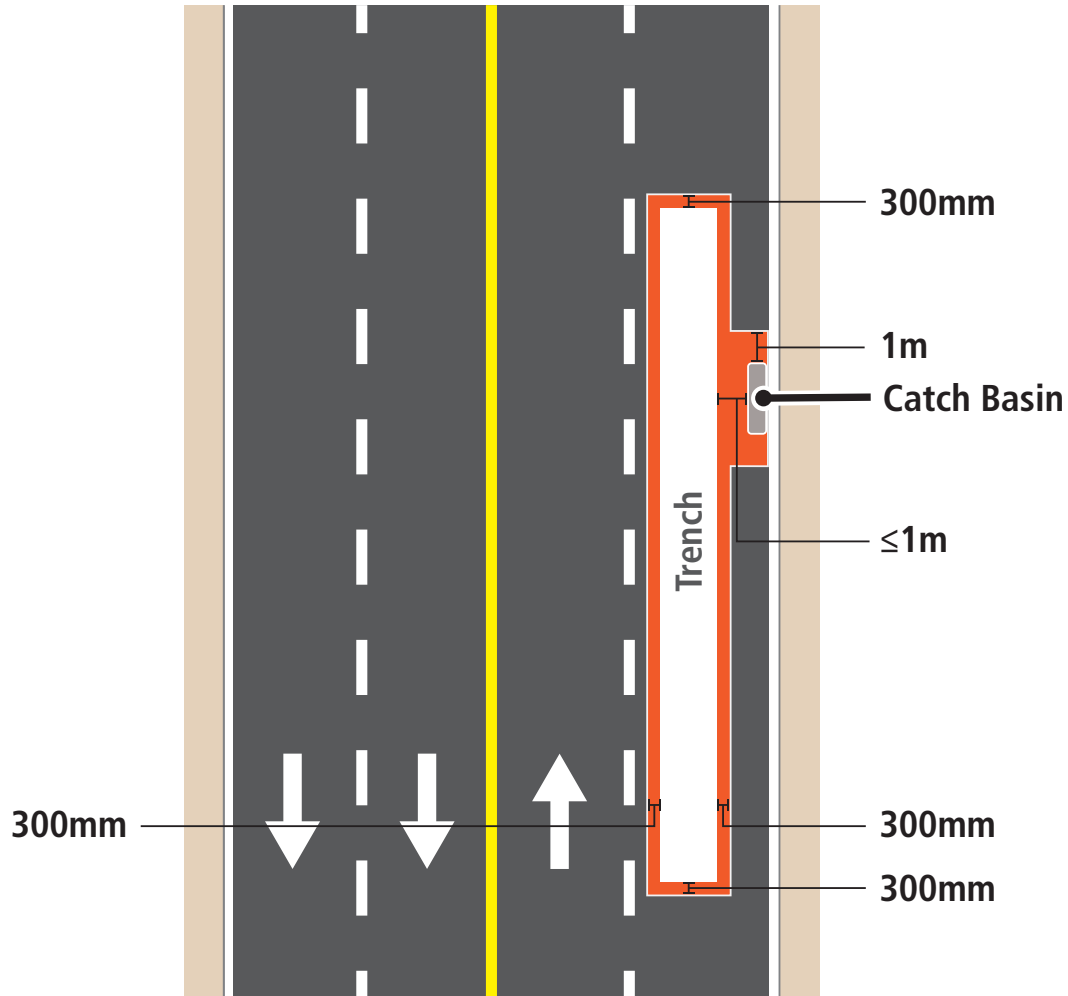
# Intersection Cuts



## Action

Regardless of pavement age, road cuts 1 m or less from the curb / catch basin / iron works, grind and pave must extend to curb / catch basin / iron works (see scenario 8).

# Iron Works



## Action

If cut is 1m or less from Catch Basin extend resurfacing.

Applies to all other scenarios.