

### The Ontario Clean Water Act

Over the years, there have been many incidents of drinking water contamination in Ontario, large and small. The result has been illness, costly clean-ups and stigmatized communities. These events remind us that in order to protect drinking water sources, we must be vigilant. This is the purpose of the *Ontario Clean Water Act*.

Because of the work done under the *Clean Water Act*, the City of Ottawa now has Source Protection Plans that:

1. Identify areas that are most vulnerable to contamination around our municipal drinking water sources - Wellhead Protection Areas and Intake Protection Zones; collectively referred to as [Drinking Water Protection Zones](#), and
2. Contain policies to protect these areas and maintain the health of our drinking water supplies.

### Two Source Protection Regions; Two Source Protection Plans:

Ontario is divided into 19 Source Protection Regions which administer source protection programs. The City of Ottawa contains two Regions; the Mississippi-Rideau Source Protection Region and the Raisin-South Nation Source Protection Region (see map on reverse) – each with its own locally-developed Source Protection Plan.

Source Protection Plans within the City were developed with oversight from local multi-stakeholder committees to ensure Plans would be effective and fair.

Source Protection Plans in the City of Ottawa:

- Prohibit the future establishment of incompatible land uses such as waste disposal sites in vulnerable drinking water areas
- Require governments to ensure that services such as sewers and winter road maintenance do not threaten drinking water sources
- Require a small number of individuals and businesses to have a Risk Management Plan to ensure certain activities, such as keeping livestock and storing liquid fuel for home heating have safeguards in place to protect the nearby drinking water source from contamination
- Encourage all residents and businesses in vulnerable drinking water areas to take voluntary action to protect the drinking water source

### Risk Management Plans

A Risk Management Plan sets out how to protect the drinking water source from an activity that has the potential to cause contamination. It takes into account the measures that are already in place so that some people will only need to document that their activity is already being done safely. Where new measures are needed, the property owner will have the peace of mind that these measures help to protect their property and assets from a potentially devastating contamination event. Risk management staff work collaboratively with the property owner to decide what should be in the Risk Management Plan.

### Key things to know:

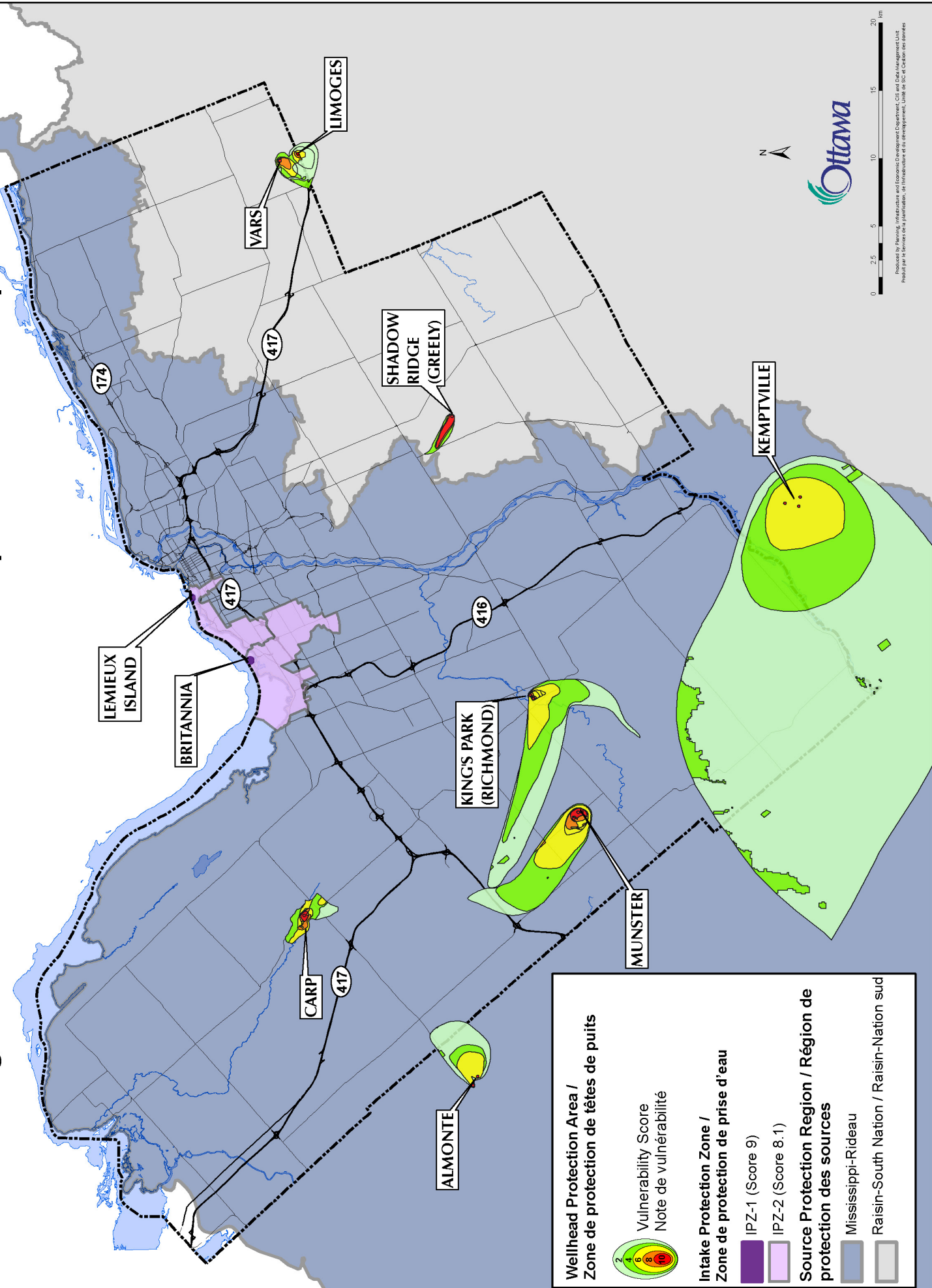
- No new requirements for private wells
- No prohibition of residential activities
- Requirements for agricultural activities reflect provincial standards and best management practices; measures already in place will be recognized.
- The protected areas where mandatory policies apply are small (about 3% of the City's land area)
- People affected by the Risk Management Plan requirement will be contacted by risk management staff who will help them through the process

### For more information visit:

City of Ottawa Source Protection  
[Ottawa.ca/sourceprotection](http://Ottawa.ca/sourceprotection)



# Drinking Water Protection Zones / Zones de protection de l'eau potable



**Wellhead Protection Area / Zone de protection de têtes de puits**

Vulnerability Score / Note de vulnérabilité

**Intake Protection Zone / Zone de protection de prise d'eau**

IPZ-1 (Score 9)

IPZ-2 (Score 8.1)

**Source Protection Region / Région de protection des sources**

Mississippi-Rideau

Raisin-South Nation / Raisin-Nation sud



Produced by Planning, Infrastructure and Economic Development Department, City and Data Management Unit  
 Produit par le Service de la planification, de l'infrastructure et du développement, Unité de SIC et Gestion des données