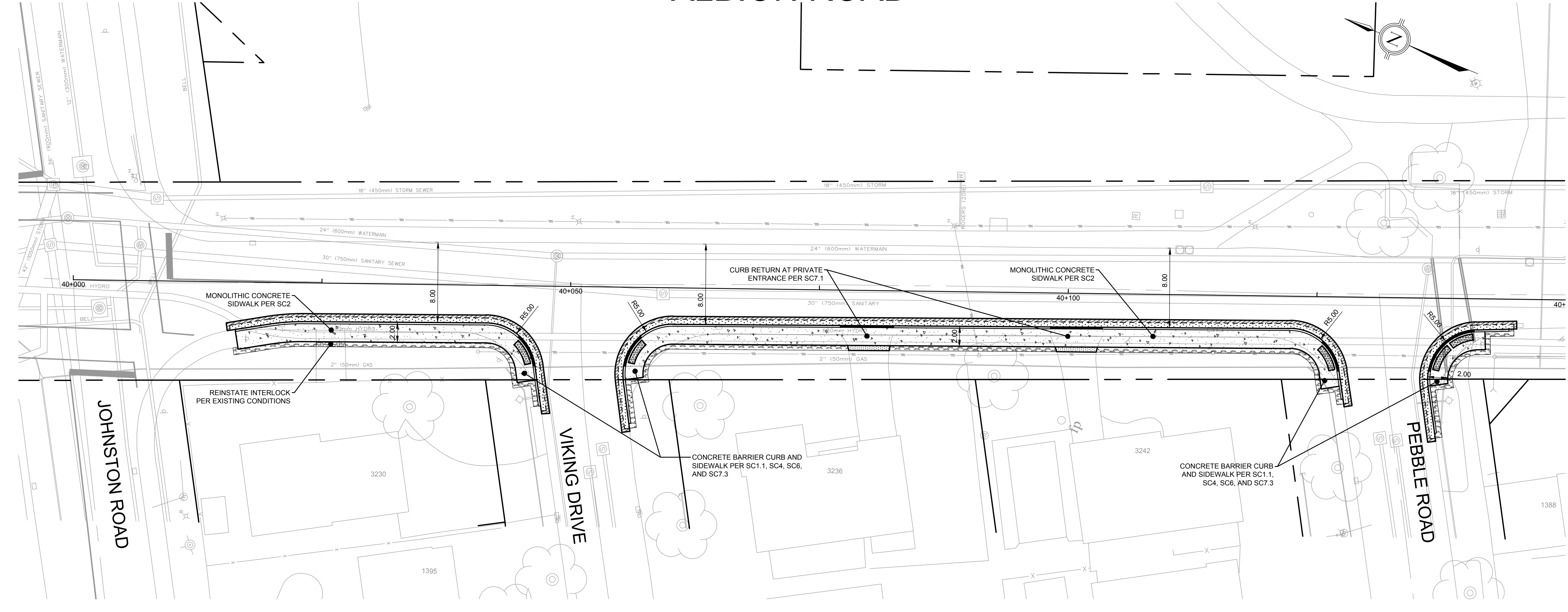


Drawing Frame: 790mm x 544mm City of Ottawa 2008 (Rev.0) Plot Date: Thursday, February 22, 2024 10:18:45 AM Thursday, February 22, 2024 10:11:19 AM

# ALBION ROAD



MACFARLANE, NASKAPI,  
WHITE ALDER AND  
ALBION ATM MEASURES

**Ottawa**

Contract No. CP000778 Dwg. No. XXX  
Sheet XX of XX

Asset No. LN57300

Carina Duclos, P.Eng. Larry McKellop, M.Eng., P.Eng.  
Director, Infrastructure and Water Services Project Manager

**CIMA+**

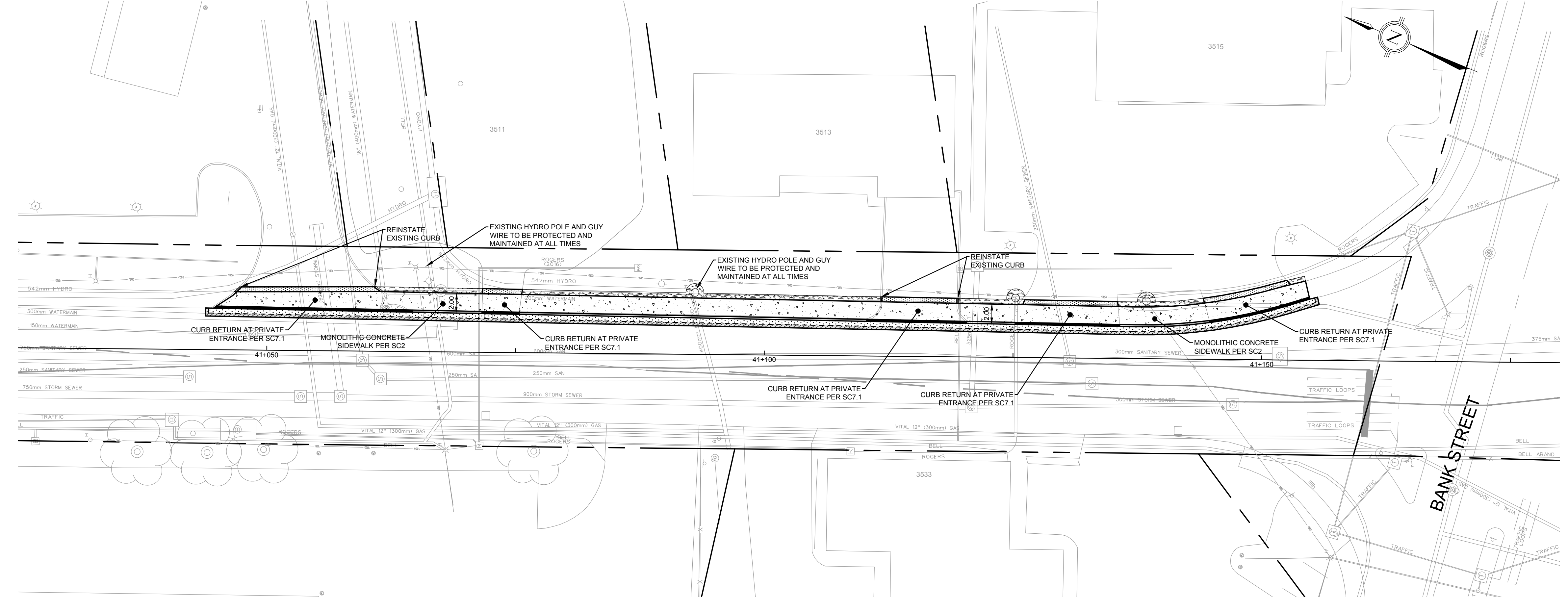
Des. J. ADAMS Chk'd. T. KENNEDY  
Dwn. S.C. POGGIOLI Chk'd. -  
Utility Circ. No. CTYxxxxxx Index No. -  
Const. Inspector -

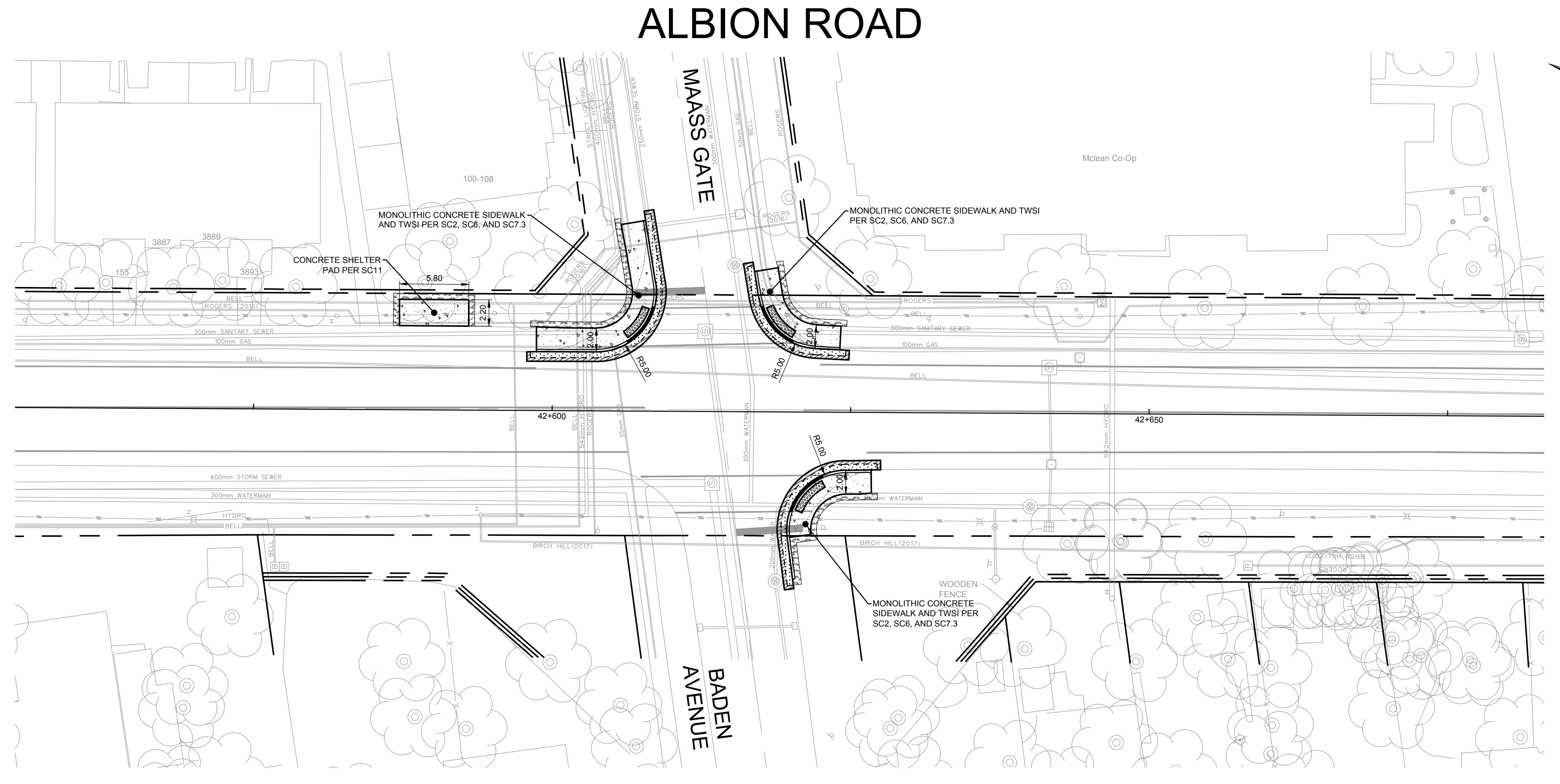
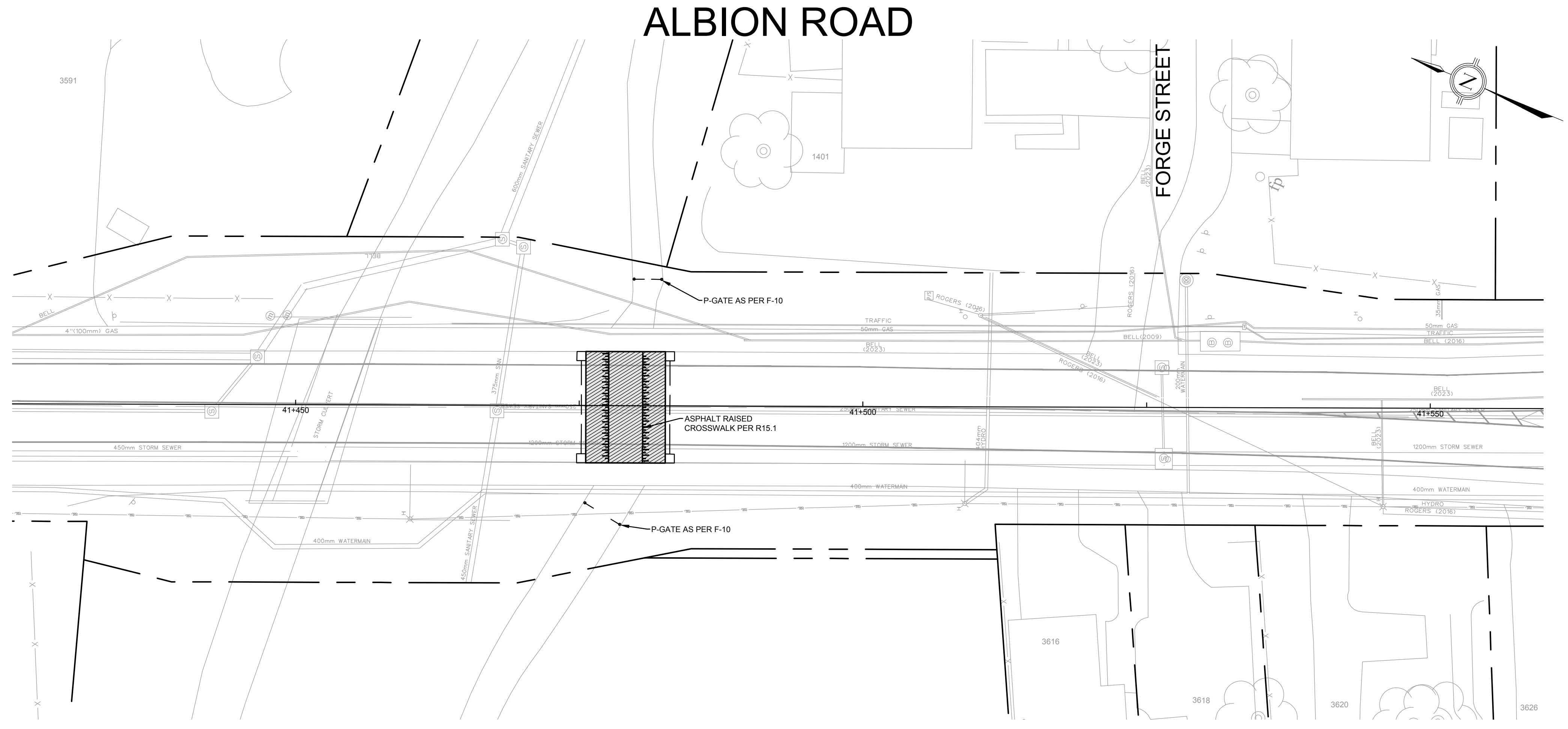
Scale: 1:250  
0m 2.5 5 10

NOTE: The location of utilities is approximate only, the exact location should be determined by consulting the municipal authorities and utility companies concerned. The contractor shall prove the location of utilities and shall be responsible for adequate protection from damage.

No.	Description	By	Date (dd/mm/yy)
1	ISSUED FOR PUBLIC CONSULTATION	TK	22/02/24
2			
3			
4			
5			

# ALBION ROAD





# ALBION ROAD

# ALBION ROAD

MACFARLANE, NASKAPI,  
 WHITE ALDER AND  
 ALBION ATM MEASURES

**Ottawa**

Contract No. CP000778 Dwg. No. XX  
 Sheet XX of XX

Asset No. LN57300

Carina Duclos, P.Eng. Director, Infrastructure and Water Services  
 Larry Mckellop, M.Eng., P.Eng. Project Manager

**CIMA+**

Des. J. ADAMS Chk'd. T. KENNEDY  
 Dwn. S.C. POGGIOLI Chk'd. -  
 Utility Circ. No. CTYxxxxxxx Index No. -  
 Const. Inspector -

Scale: 1:250  
 0m 2.5 5 10

NOTE: The location of utilities is approximate only, the exact location should be determined by consulting the municipal authorities and utility companies concerned. The contractor shall prove the location of utilities and shall be responsible for adequate protection from damage.

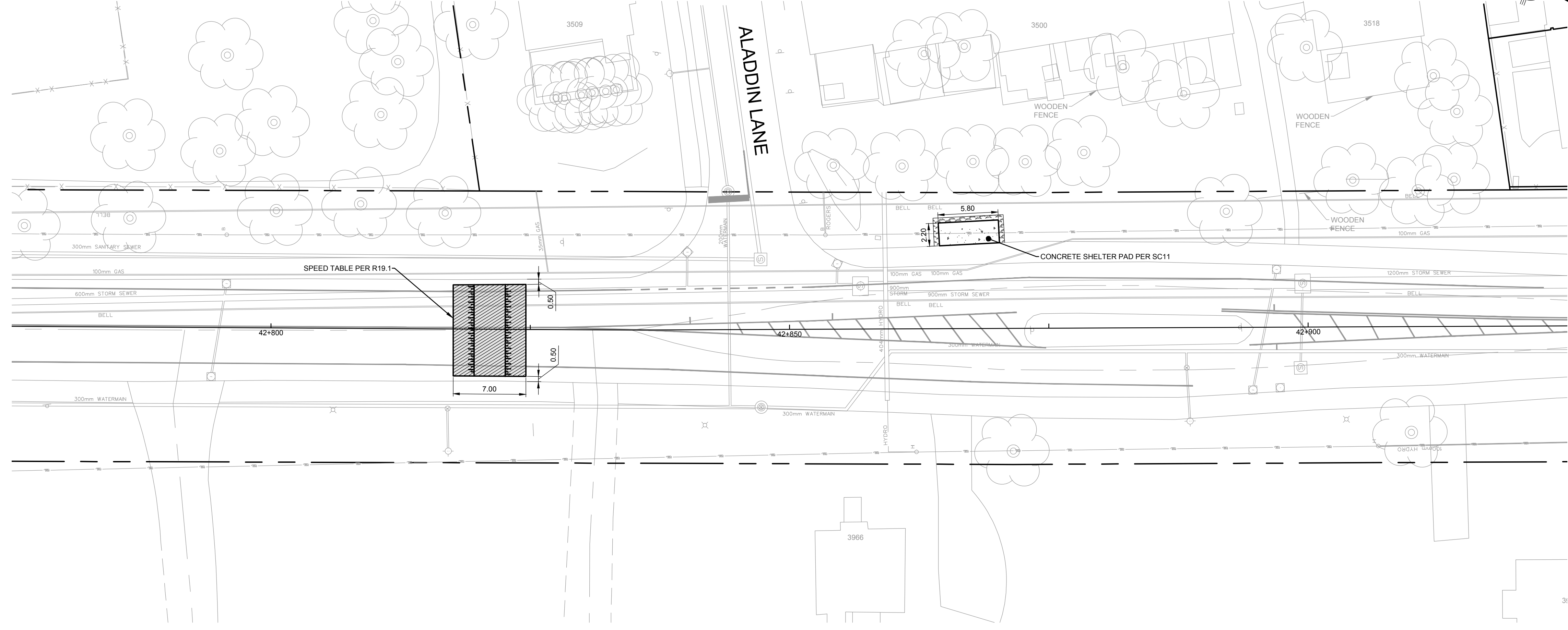
No.	Description	By	Date (dd/mm/yy)
1	ISSUED FOR PUBLIC CONSULTATION	TK	22/02/24
2			
3			
4			
5			

REVISIONS

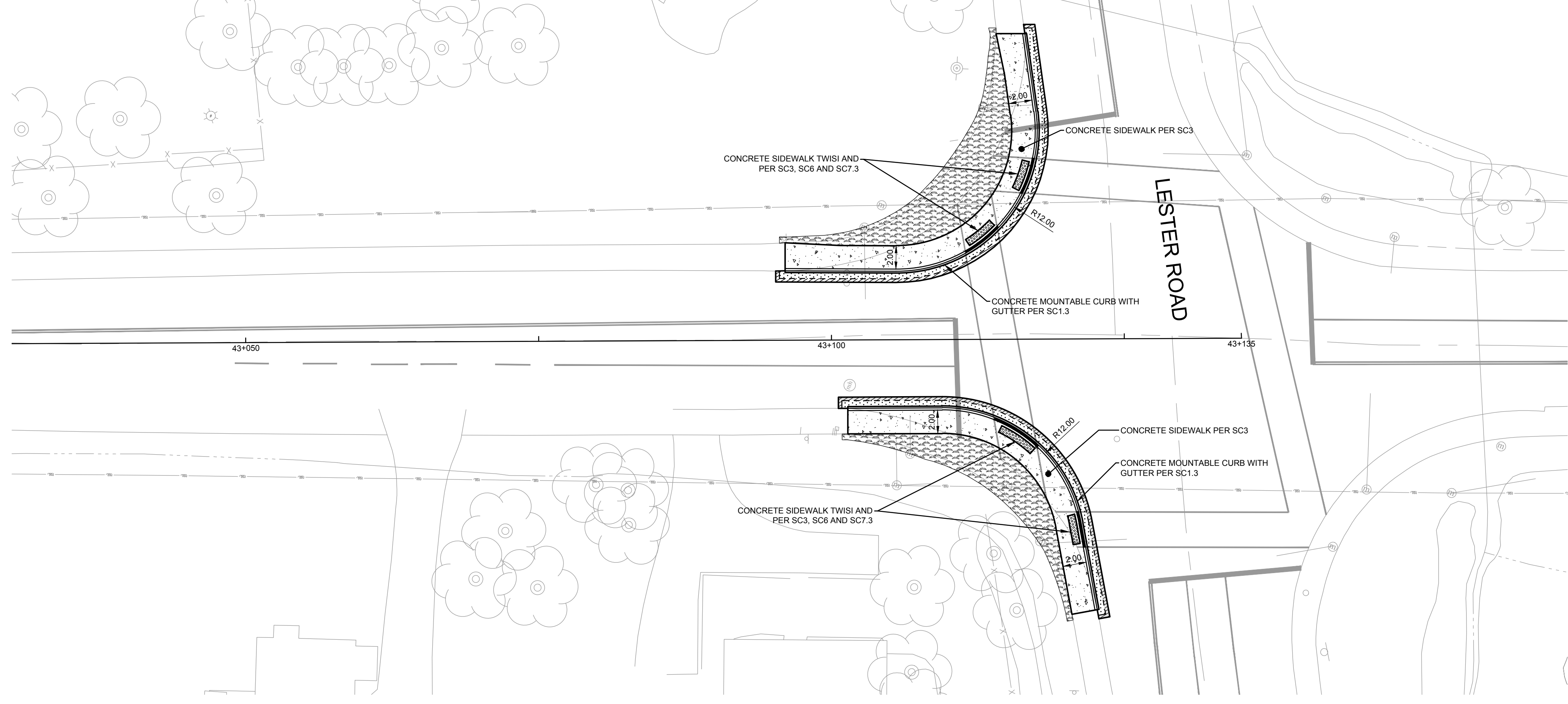
No.	Description	By	Date (dd/mm/yy)
1	ISSUED FOR PUBLIC CONSULTATION	TK	22/02/24
2			
3			
4			
5			

Page Setup: ---  
Drawing Frame: 790mm x 54mm x 64mm City of Ottawa 2008 (Rev.0)  
Plot Date: Thursday, February 22, 2024 10:18:56 AM  
Thursday, February 22, 2024 10:11:19 AM  
Consultant's Information: Z:\Cma-CID\OTL\Projects\AA\001-00b-ADD\149\AA001113F\_OTL\_Traffic Calming Measures A1 4 Locations\310\_Dwg\Civil\CP000778-LN67200-001.dwg  
C:\Users\310\_Dwg\Civil\CP000778-LN67200-001.dwg

# ALBION ROAD



# ALBION ROAD



MACFARLANE, NASKAPI,  
WHITE ALDER AND  
ALBION ATM MEASURES



GEOMETRY  
FROM STA. 42+775 TO 42+925  
FROM STA. 43+030 TO 43+135

Contract No. CP000778 Dwg. No. XX  
Sheet XX of XX

Carina Duclos, P.Eng. Director, Infrastructure and Water Services  
Larry McKellop, M.Eng., P.Eng. Project Manager



Asset No. LN57300  
Asset Group  
Des. J. ADAMS Chk'd. T. KENNEDY  
Dwn. S.C. POGGIOLI Chk'd.  
Utility Circ. No. CTYxxxxxxx Index No.  
Const. Inspector  
Scale: 1:250  
0m 2.5 5 10

NOTE: The location of utilities is approximate only, the exact location should be determined by consulting the municipal authorities and utility companies concerned. The contractor shall prove the location of utilities and shall be responsible for adequate protection from damage.

No.	Description	By	Date (dd/mm/yy)
1	ISSUED FOR PUBLIC CONSULTATION	TK	22/02/24
2			
3			
4			
5			