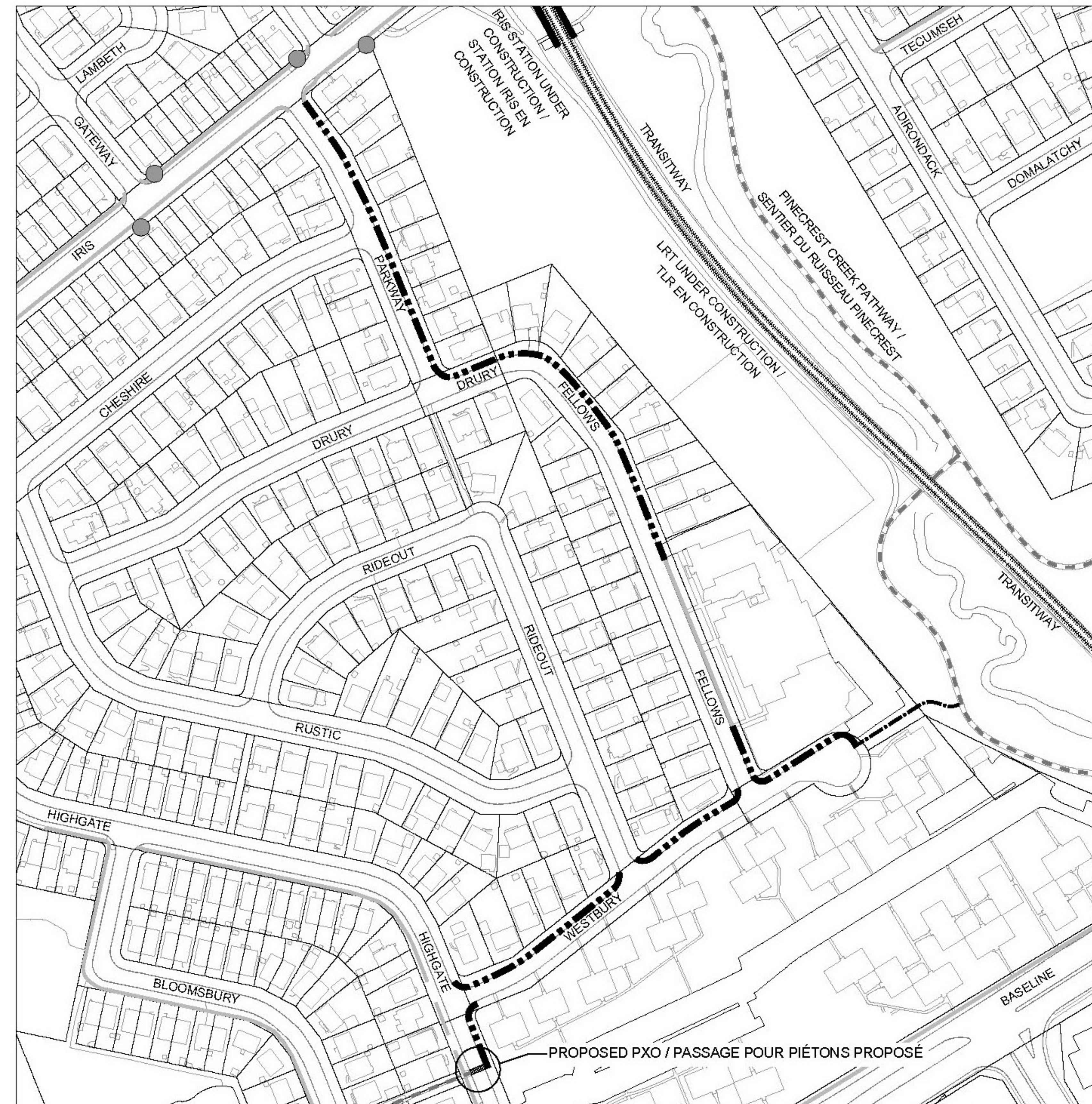


Westbury Fellows Drury Parkway Sidewalks Project



Legend /	-----	New Sidewalk / Nouveau trottoir
Légende	-----	New Multi-Use Pathway / Nouveau sentier polyvalent
	-----	Existing Sidewalk / Trottoir existant
	-----	Existing Multi-use Pathway / Sentier polyvalent existant
	●	Bus Stop / Arrêt d'autobus



Project overview

This project includes:

- A new sidewalk along:
 - Parkway Drive (full length)
 - Drury Lane (Parkway Drive to Fellows Road)
 - Fellows Road (Drury Lane to Westbury Road)
 - Westbury Road (full length)
 - Highgate Road. (Westbury Road to new PXO)
- A new multi-use pathway (MUP) connecting the new sidewalk at the end of the cul-de-sac on Westbury Road to the NCC's Pinecrest Creek Pathway.
- A new pedestrian crossover (PXO) on Highgate Road, south of Westbury Road.

Project overview continued

The new sidewalk will provide:

- Greater walkability and access to Terre-des-Jeunes Catholic Elementary School
- Better access to Iris Transitway/LRT Station
- Access to the Pinecrest Creek Pathway
- Support for pedestrians, including more vulnerable users such as children, seniors, wheelchair users and persons with vision impairment
- Walking surface indicators at pedestrian crossings along the new sidewalk

Design and construction details

- A new 2.0 metre wide concrete sidewalk on:
 - Parkway Drive (east side) – Iris Street to Drury Lane.
 - Drury Lane (north side) – Parkway Drive to Fellows Road.
 - Fellows Road (east side) – Drury Lane to Westbury Road (excluding where the existing sidewalk is in front of the school).
 - Westbury Road (north side) – Highgate Road to the end of the cul-de-sac at its eastern end.
 - Highgate Road (east side) – Westbury Road, southerly for 35 metres, to the new pedestrian crossover (PXO).
- A new 3.0 metre wide multi-use pathway (MUP) connecting the sidewalk along Westbury Road to the NCC's Pinecrest Creek Pathway.
- A new PXO, 35 metres south of Westbury Road, inline with the existing pathway that connects Highgate Road to Bloomsbury Crescent / Regency Terrace.
- Westbury Road, Parkway Drive and Fellows Road will be narrowed to 7.5 metres wide to reduce the impacts to trees and private properties while still allowing on-street parking on one side of the street.

Design and construction details continued

- Drury Lane will be narrowed to 7.0 metres between Parkway Drive and Fellows Road to preserve the mature trees and reduce impacts to private properties. On-street parking will be prohibited in this section.
- The sidewalks will be partially installed within the roadway and grassed area. The typical width of the reduction in grassed area ranges from approximately 0 to 2 metres.
- Landscaping and other features within the road right of way may be impacted during construction. Restoration is included in the work.
- Street trees will be protected during construction. This includes pruning by qualified personnel prior to construction and using hydrovac excavation for trees that are close to the construction works.
- Some trees on NCC property will be removed to construct the new multi-use pathway. Trees on NCC property will be replaced at a 2:1 ratio.

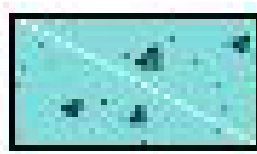

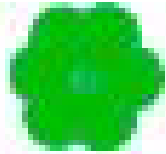
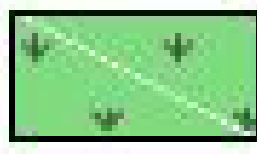
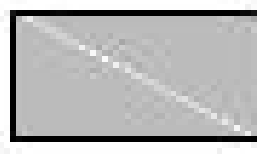

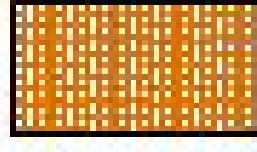



Sidewalk design details

- Details of the sidewalk design are illustrated in the following slides for Parkway Drive, Drury Lane, Fellows Road and Westbury Road.
- The following legend is the same for all drawings:

General notes:

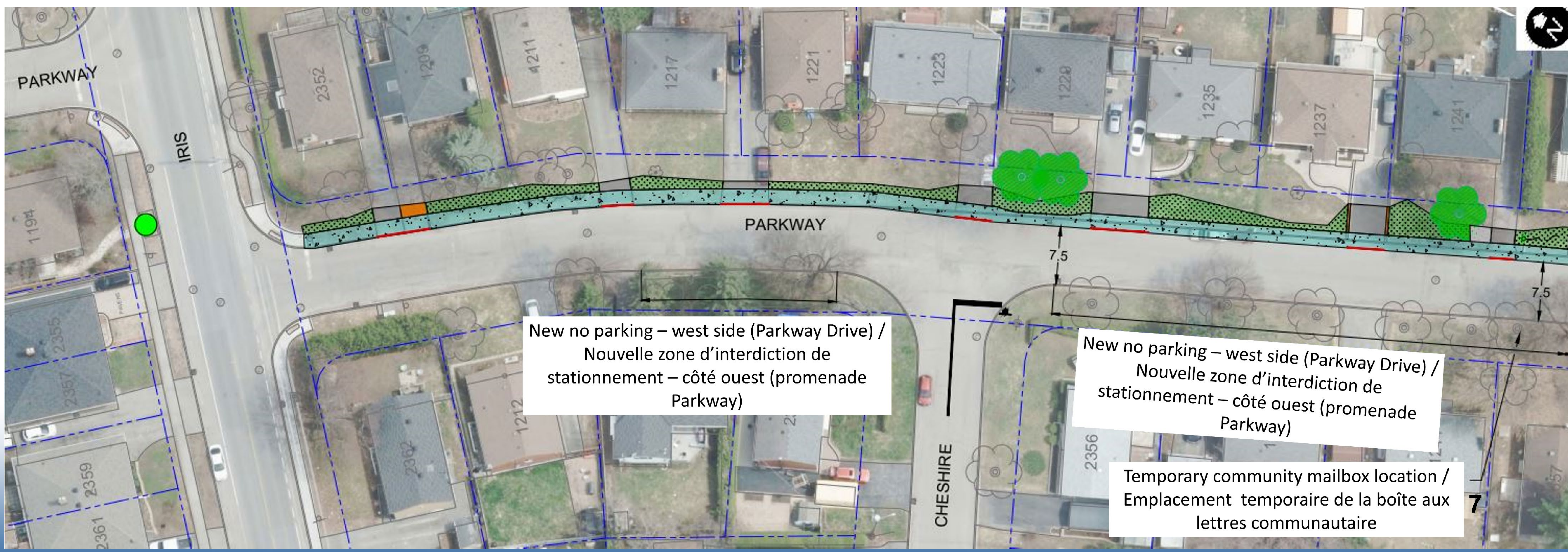
- All grading to provide positive drainage to the road. Swales and catch basins to be provided where positive drainage is not possible.
- Strips of residential driveways to be removed and reinstated.
- Width of removal and reinstatement of residential driveways will vary depending on slope required for drainage.
- Trees to be protected.

Legend / Légende

	New Concrete Sidewalk / Nouveau trottoir en béton		New Catch Basin / Nouveau puisard		Tree to be protected / Arbre à protéger
	Sod / Gazon		New Asphalt Paving / Nouveau revêtement en asphalte		Depressed Curb / Bordure surbaissée
	Property line / Limite de la propriété		Paver Driveway / Entrée en pavé		Tactile Walking Surface Indicator / Indicateur tactile de surface de marche
	Bus Stop / Arrêt d'autobus		New Concrete Curb / Nouvelle bordure en béton		Swale / Rigole de drainage

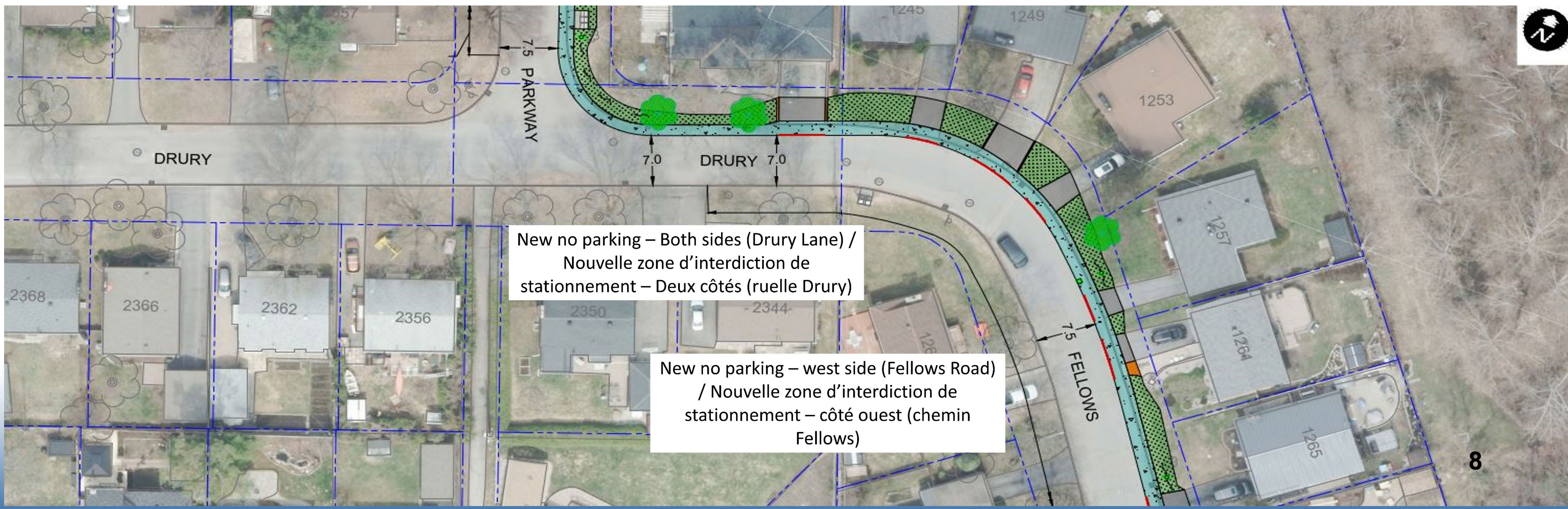
Parkway Drive

- 2.0 metre sidewalk on east side of Parkway Drive from Iris Street to Drury Lane.
- Sidewalk will be reduced to 1.5 metres at 1229 Parkway Drive to protect the trees.
- Road will be narrowed to 7.5 metres from 1217 Parkway Drive to Drury Lane to protect the trees.
- On-street parking will be allowed on the east side of street only where road is narrowed.
- A swale and catch basin will be added at 2347 Drury Lane to provide drainage.
- The community mailbox will be relocated temporarily to the west side of Parkway Drive, next to 2357 Drury Lane, for the duration of the construction.
- New stop sign on Cheshire Road at Parkway Drive.



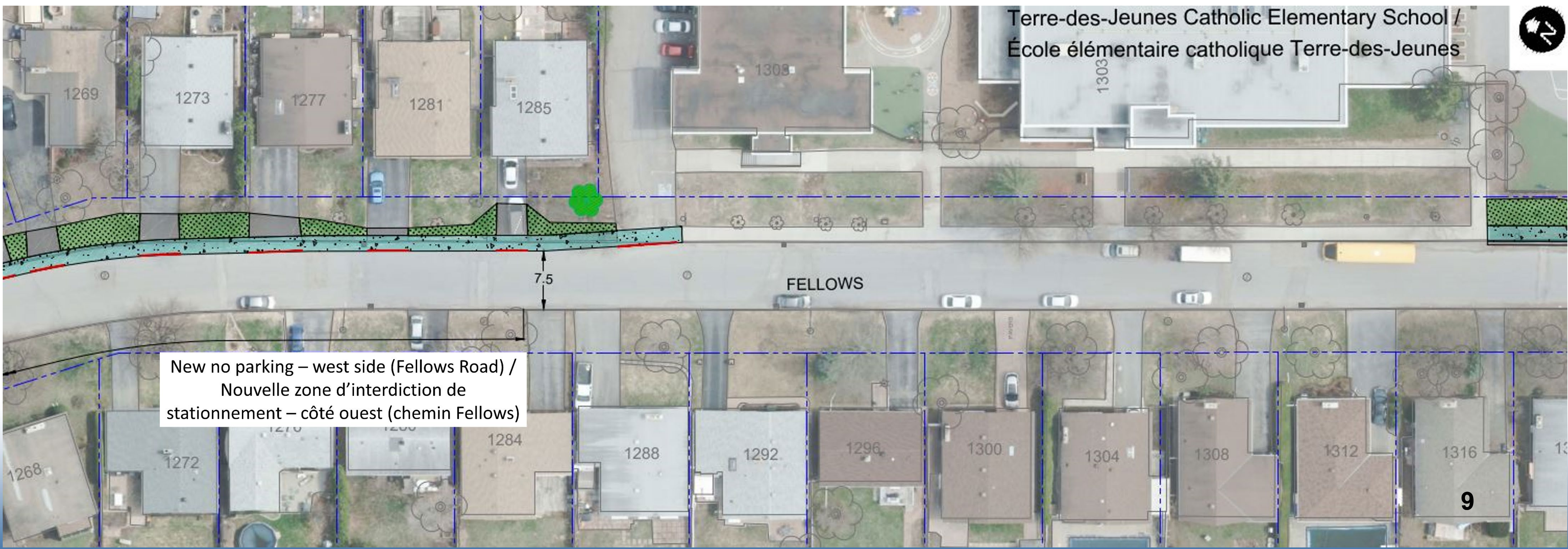
Drury Lane / Fellows Road

- 2.0 metre sidewalk on the north side of Drury Lane and east side of Fellows Road.
- Sidewalk will be reduced to 1.5 metres at 2347 Drury Lane to protect the trees.
- Road will be narrowed to between 7.0 metres on Drury Lane and 7.5 metres on Fellows Road to protect the trees.
- On-street parking will be prohibited where the road width is less than 7.5 metres, and restricted to one side of the street where the road is 7.5 metres.
- Swales and catch basins will be added at 2347 Drury Lane, and 1257 & 1265 Fellows Road to provide drainage.



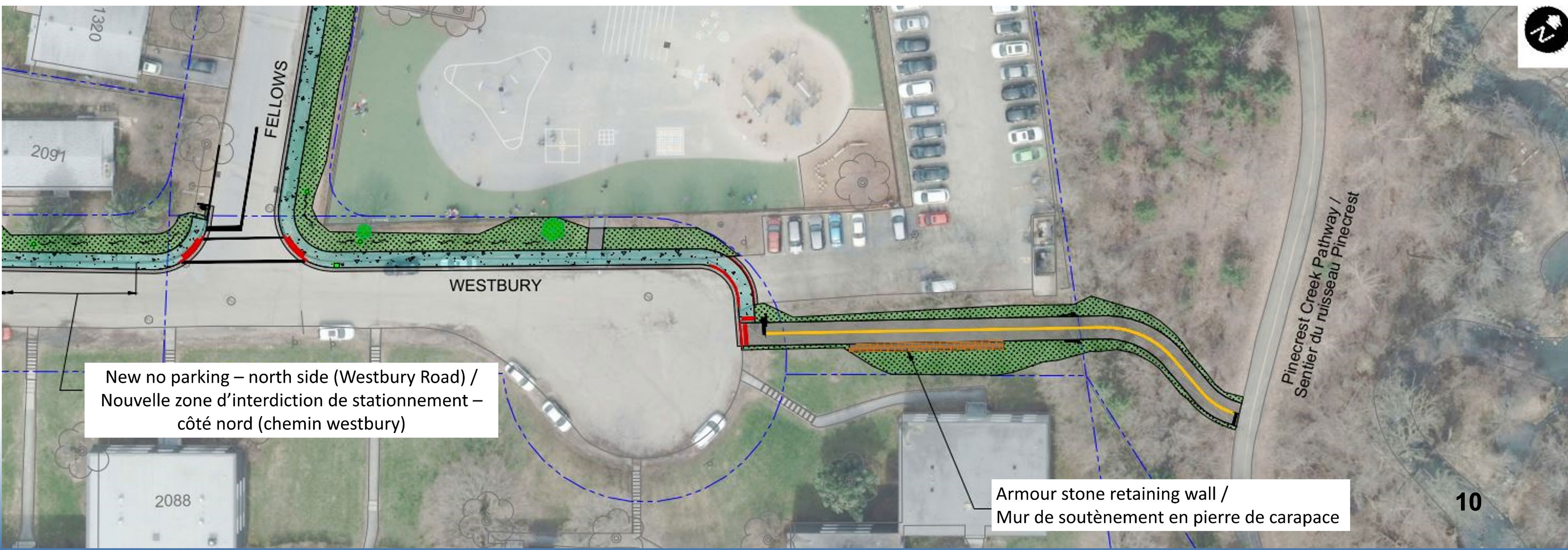
Fellows Road

- 2.0 metre sidewalk on the east side of Fellows Road to Westbury Road.
- Sidewalk will tie into the existing sidewalk in front of the school.
- Road will be narrowed to 7.5 metres from Drury Lane to 1285 Fellows Road to protect the trees.
- On-street parking will be restricted to one side of street where the road is narrowed to 7.5 metres.



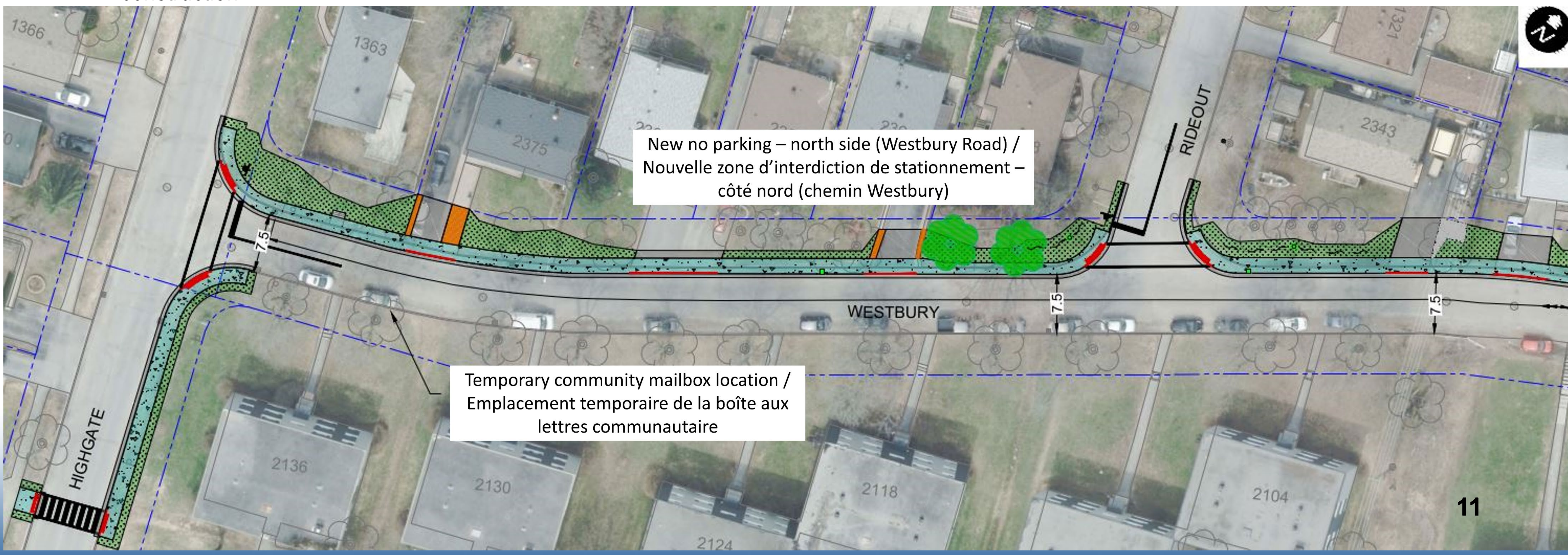
Westbury Road (Fellows Road to Pinecrest Creek Pathway)

- 2.0 metre sidewalk on the north side of Westbury Road from Fellows Road to the end of the cul-de-sac.
- 3.0 metre MUP at the end of the cul-de-sac extending from the sidewalk to the Pinecrest Creek Pathway.
- Road will be narrowed to 7.5 metres to protect the trees.
- New crosswalk on Fellows Road at Westbury Road.
- Swales and catch basins will be added at the southwest corner of the school property, and to 2091 Westbury Road to provide drainage.



Westbury Road (Highgate Road to Fellows Road)

- 2.0 metre sidewalk on north side of Westbury Road from Highgate Road to Fellows Road.
- Road will be narrowed to 7.5 metres from Highgate Road to Rideout Crescent to protect the trees.
- Sidewalk will be reduced to 1.5 metres from 2361 Westbury Road to Rideout Crescent to protect the trees.
- Swales and catch basins will be added at 1328 Rideout Crescent and 2343 Westbury Road to provide drainage.
- New stop sign and crosswalk on Rideout Crescent at Westbury Road.
- On-street parking will be reduced to one side of the street between Highgate Road and Fellows Road.
- New stop sign and crosswalk on Westbury Road at Highgate Road.
- The community mailbox will be relocated temporarily to south side of Westbury Road, next to 2136 Westbury Road, for the duration of the construction.



Highgate Road

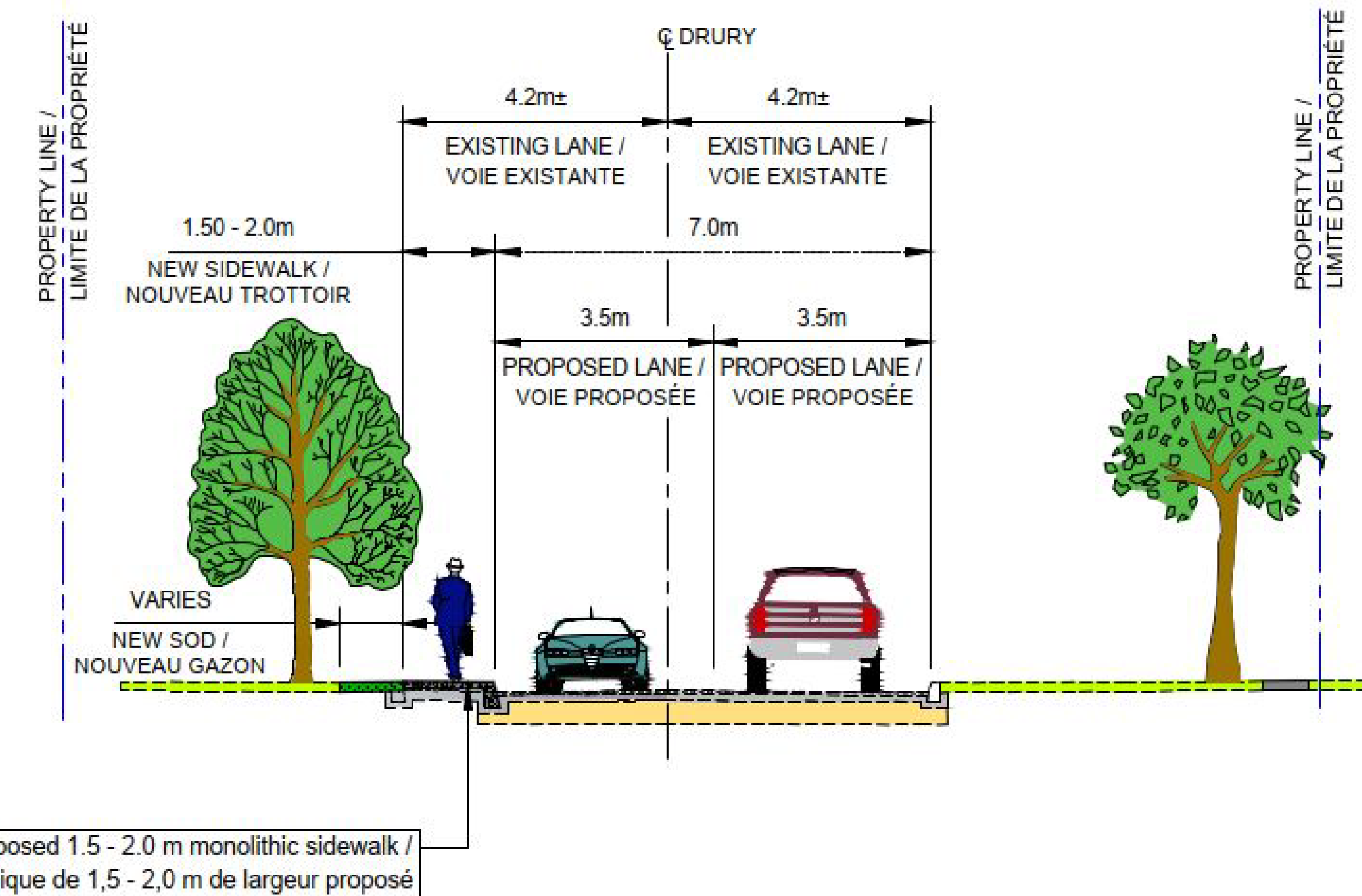
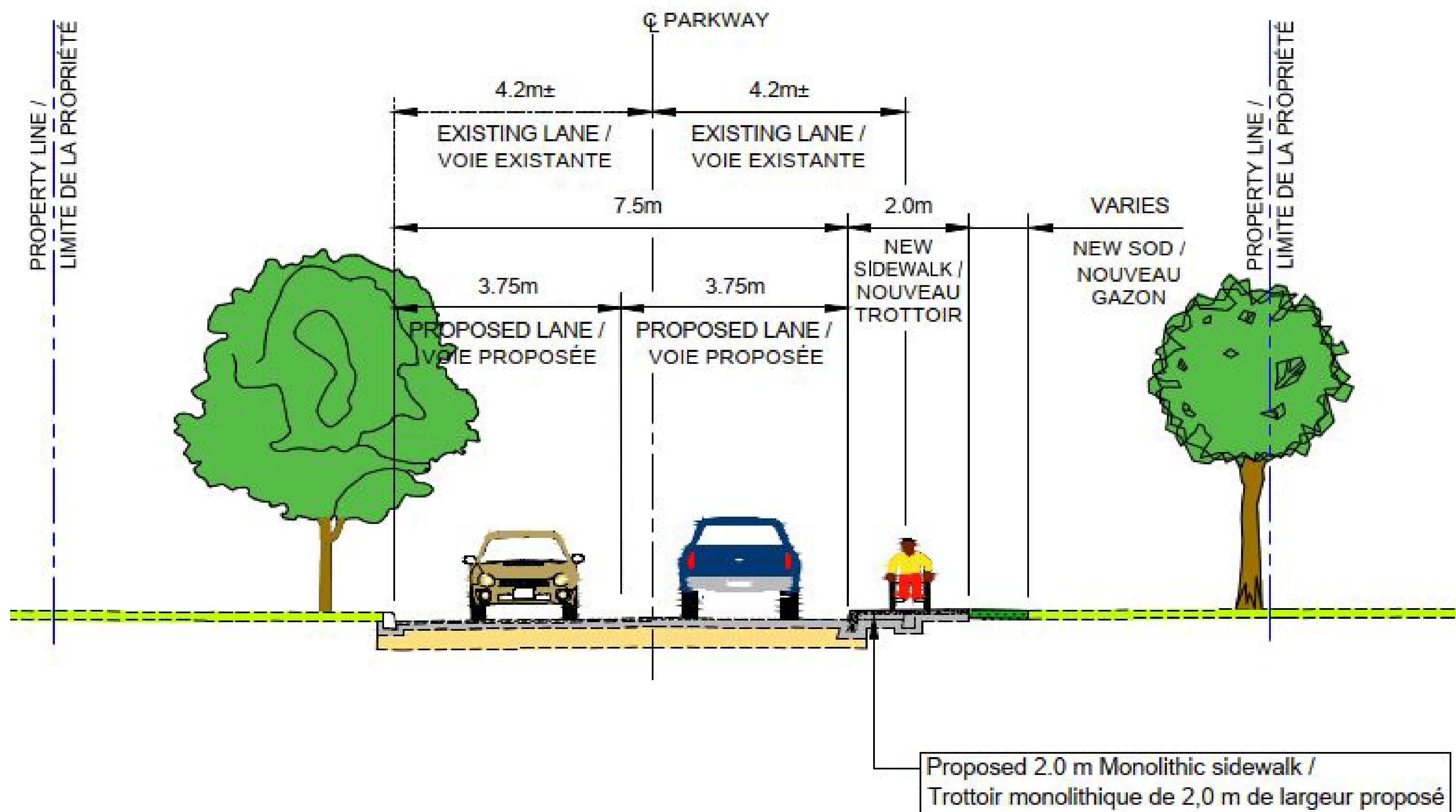
- 2.0 metre wide sidewalk on east side of Highgate Road, from Westbury Road, travelling southerly to the new pedestrian crossover (PXO) on Highgate Road.
- PXO is approximately 35 metres south of Westbury Road.
- The PXO aligns with the pathway between 1378 and 1386 Highgate Road that connects Highgate Road to Bloomsbury Crescent / Regency Terrace.



Typical cross sections

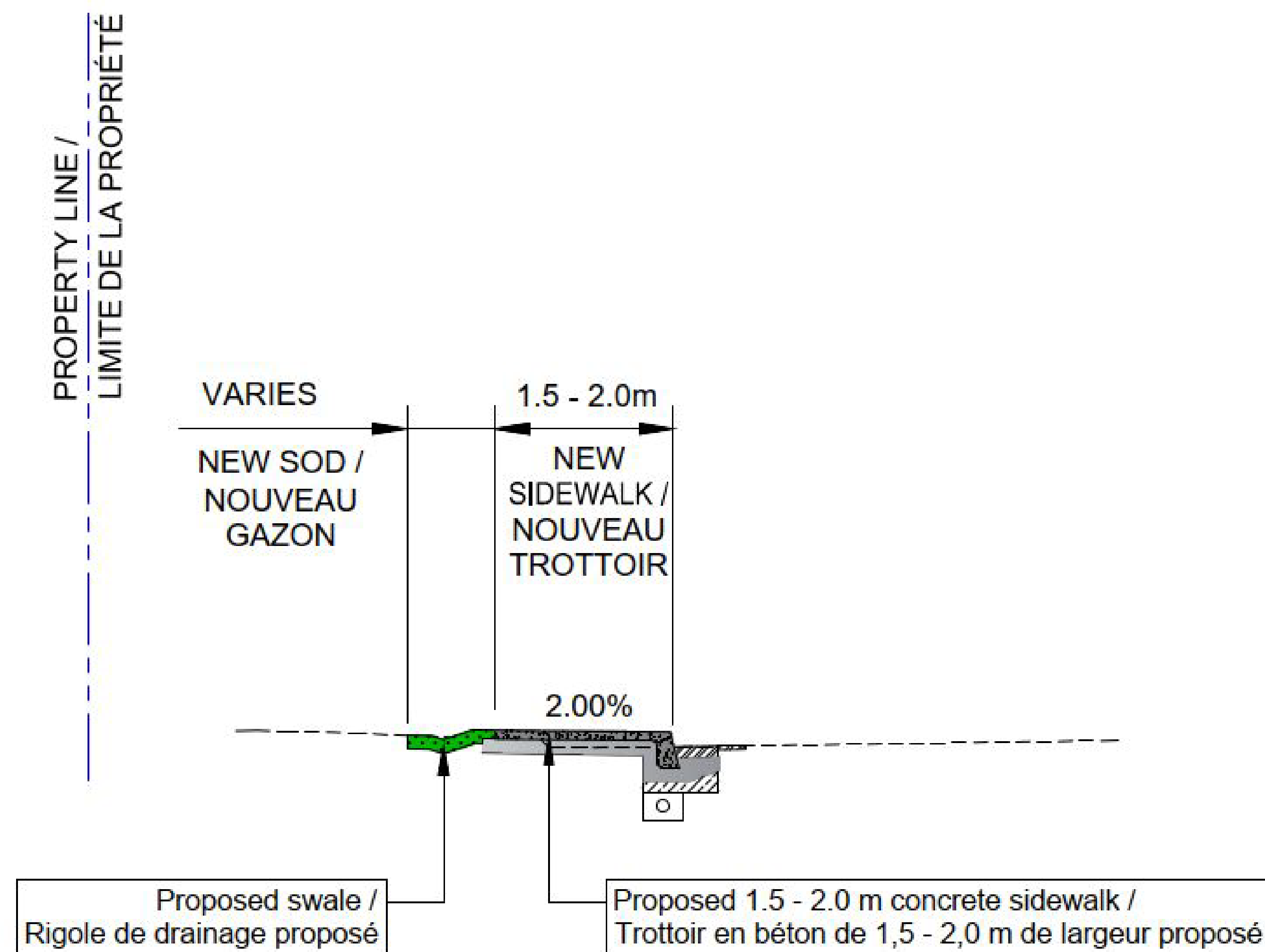
Sidewalk partly in front of existing curb –
Portions of Parkway, Fellows & Westbury

Sidewalk completely in front of existing
curb – Most of Drury

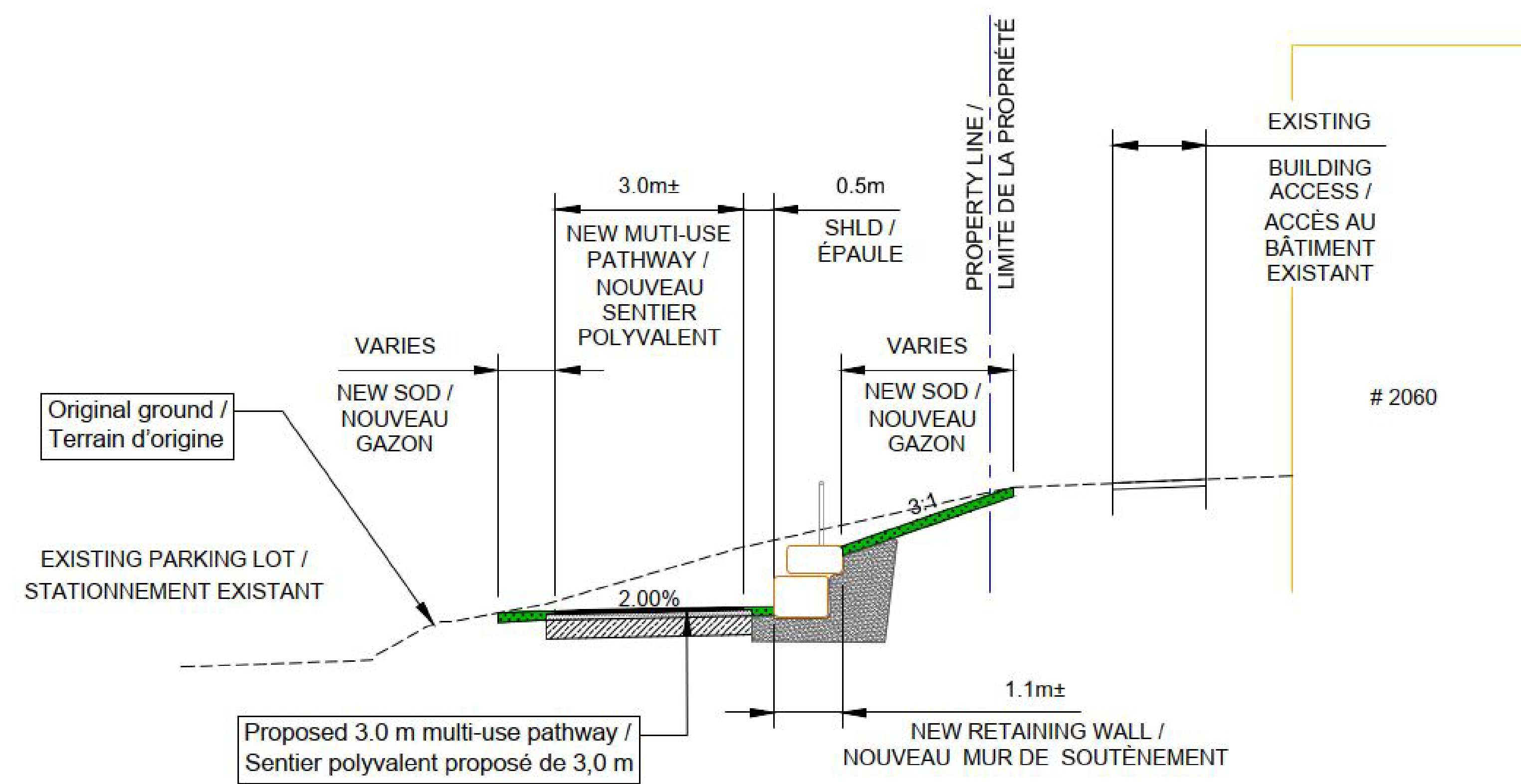


Typical cross sections continued

Swale behind sidewalk detail



MUP and retaining wall detail



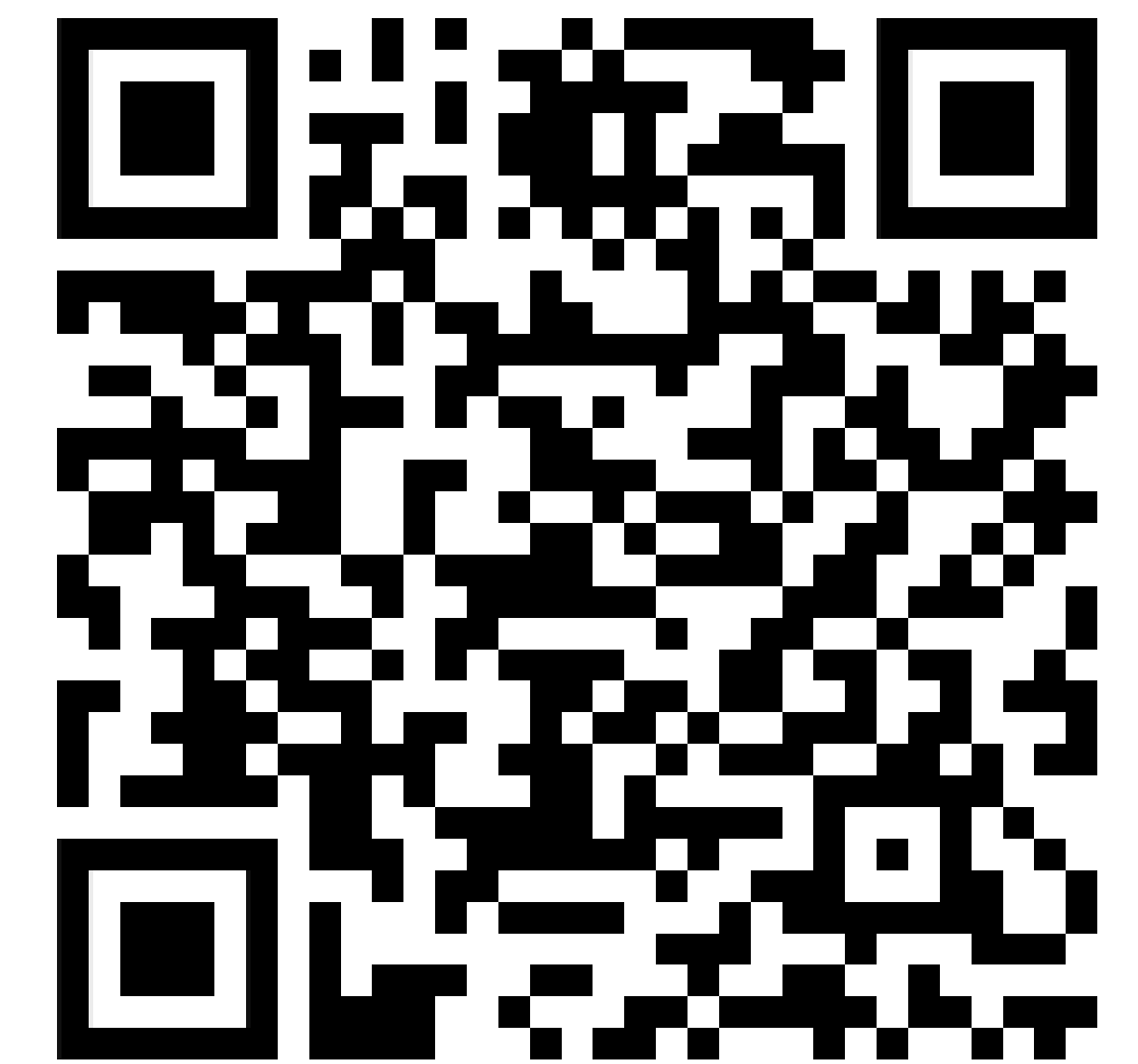
Construction timing

Estimated timeline for this project:

- **Design completion:** spring 2024
- **Construction start:** summer 2024
- **Construction completion:** fall 2024

Next steps

Please provide your comments by **April 17, 2024**, via the [online form](#) or by email to:



Will Ball, P.Eng.

Project Manager

Design and Construction Municipal - Infrastructure and Water Services

City of Ottawa

Tel.: 613-580-2424, ext. 26968

Email: will.ball@ottawa.ca

The City will complete the design with consideration for comments received.

The project will proceed to construction once design work is complete.