

NOTE: The location of utilities is approximate only, the exact location should be determined by consulting the municipal authorities and utility companies concerned. The contractor shall prove the location of utilities and shall be responsible for adequate protection from damage.

No.	Description	By	Date (dd/mm/yy)
1	ISSUED FOR REVIEW	R.C.	18/03/2020

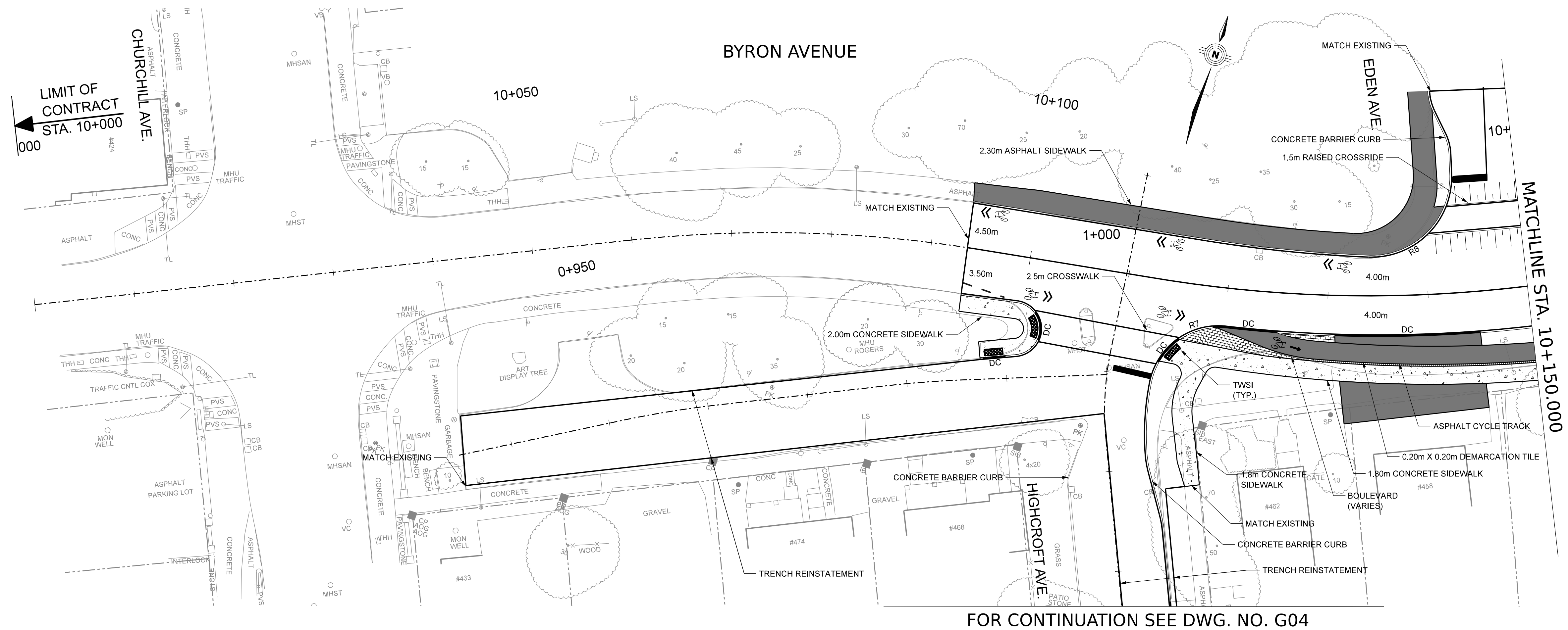
NOT FOR CONSTRUCTION

FINAL GEOMETRIC CONFIGURATION OF DRIVEWAYS, WALKWAYS, AND LANDSCAPE FEATURES TO BE DETERMINED DURING SUBSEQUENT DESIGN PHASES

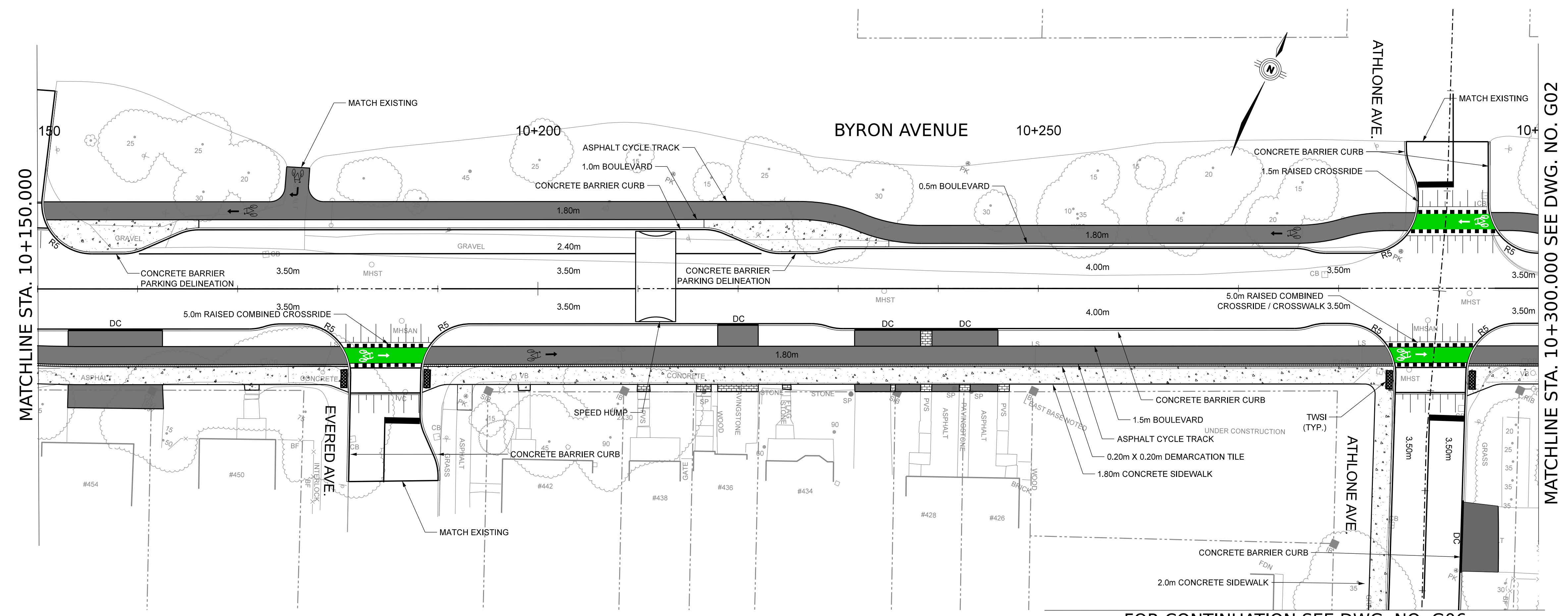
NOTES:

PROPOSED INTERSECTION THROATS:

- HIGHCROFT AVENUE (AT BYRON AVENUE) - 7.0m
- HIGHCROFT AVENUE (AT BYRON PLACE) - 5.0m
- EDEN AVENUE - 7.0m
- EVERED AVENUE - 7.0m
- ATHLONE AVENUE - 7.0m



FOR CONTINUATION SEE DWG. NO. G04



FOR CONTINUATION SEE DWG. NO. G06

LIMIT OF CONTRACT
STA. 10+000

MATCHLINE STA. 10+150.000

MATCHLINE STA. 10+150.000

MATCHLINE STA. 10+150.000

MATCHLINE STA. 10+300.000 SEE DWG. NO. G02

NOTE: The location of utilities is approximate only, the exact location should be determined by consulting the municipal authorities and utility companies concerned. The contractor shall prove the location of utilities and shall be responsible for adequate protection from damage.

No.	Description	By	Date (dd/mm/yy)
1	ISSUED FOR REVIEW	R.C.	18/03/2020

NOT FOR CONSTRUCTION

FINAL GEOMETRIC CONFIGURATION OF DRIVEWAYS,
WALKWAYS, AND LANDSCAPE FEATURES TO BE
DETERMINED DURING SUBSEQUENT DESIGN PHASES

NOTES:

PROPOSED INTERSECTION THROATS:

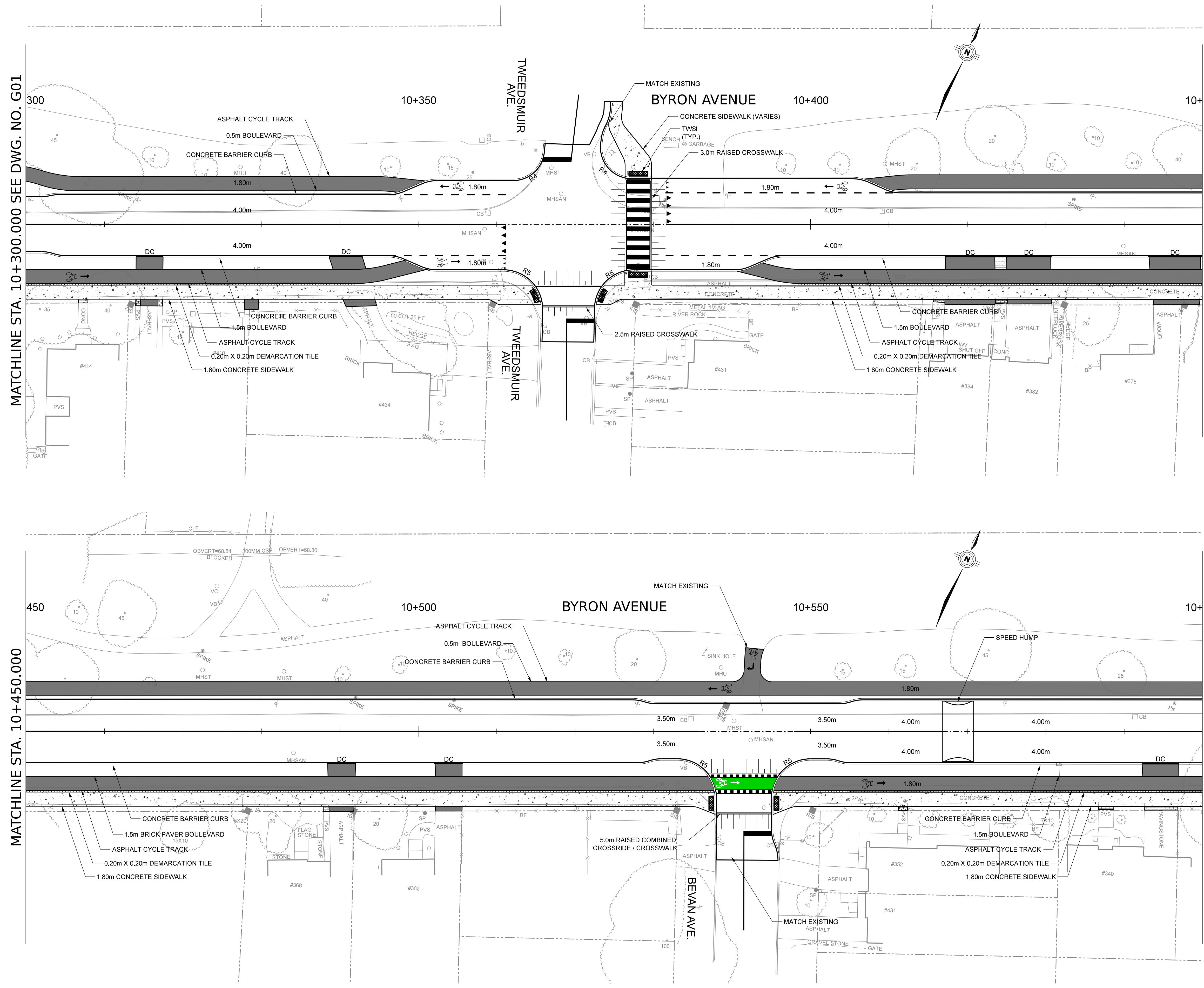
- TWEEDSMUIR AVENUE - 7.0m
- BEVAN AVENUE - 7.0m

MATCHLINE STA. 10+300.000 SEE DWG. NO. G01

MATCHLINE STA. 10+450.000

MATCHLINE STA. 10+450.000

MATCHLINE STA. 10+600.000 SEE DWG. NO. G03



NOTE: The location of utilities is approximate only, the exact location should be determined by consulting the municipal authorities and utility companies concerned. The contractor shall prove the location of utilities and shall be responsible for adequate protection from damage.

No.	Description	By	Date (dd/mm/yy)
1	ISSUED FOR REVIEW	R.C.	18/03/2020

NOT FOR CONSTRUCTION

FINAL GEOMETRIC CONFIGURATION OF DRIVEWAYS, WALKWAYS, AND LANDSCAPE FEATURES TO BE DETERMINED DURING SUBSEQUENT DESIGN PHASES

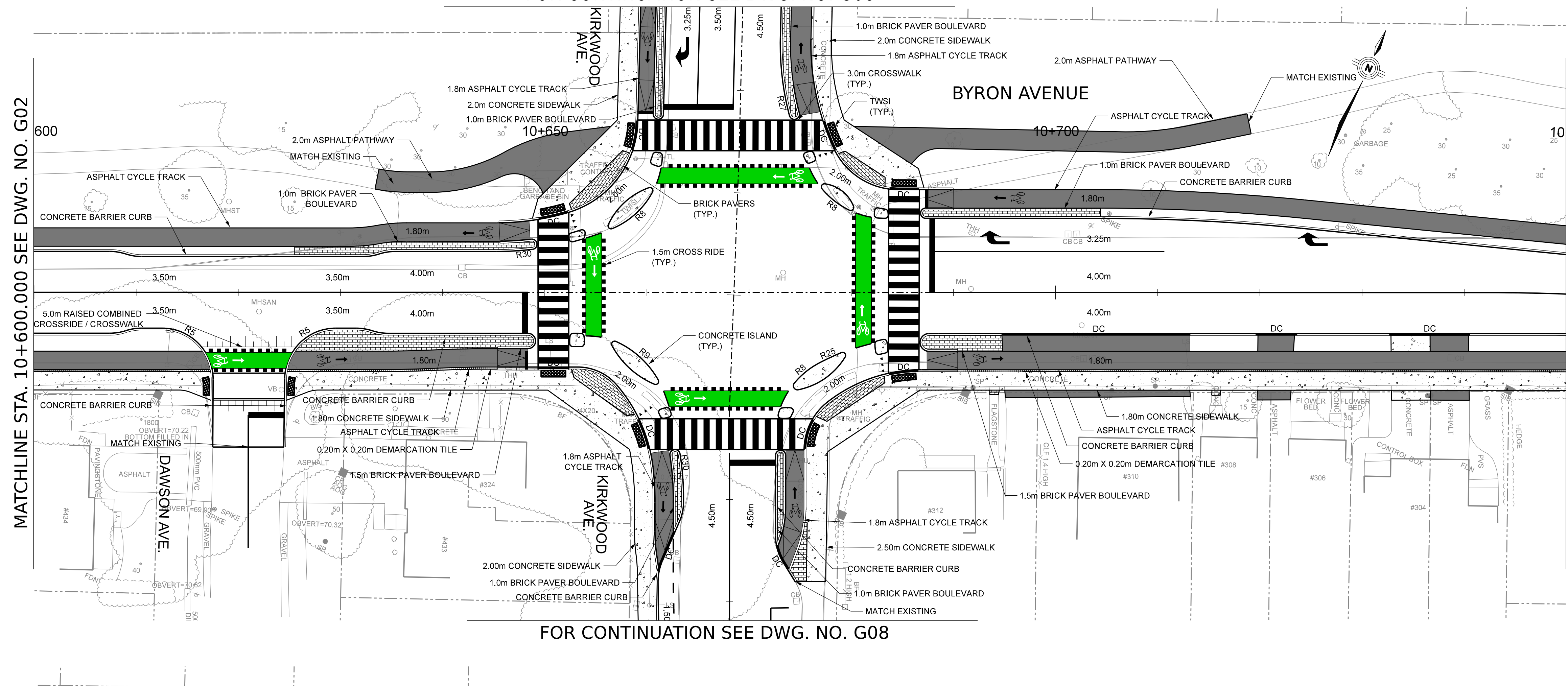
NOTES:

- PROPOSED INTERSECTION THROATS:
 - DAWSON AVENUE - 7.0m
 - HILLSON AVENUE - 7.0m
- CYCLE TRACKS TO RAMP DOWN TO ROAD GRADE AT KIRKWOOD AVENUE INTERSECTION PER ACCESSIBILITY AT INTERSECTIONS APPENDIX A-3

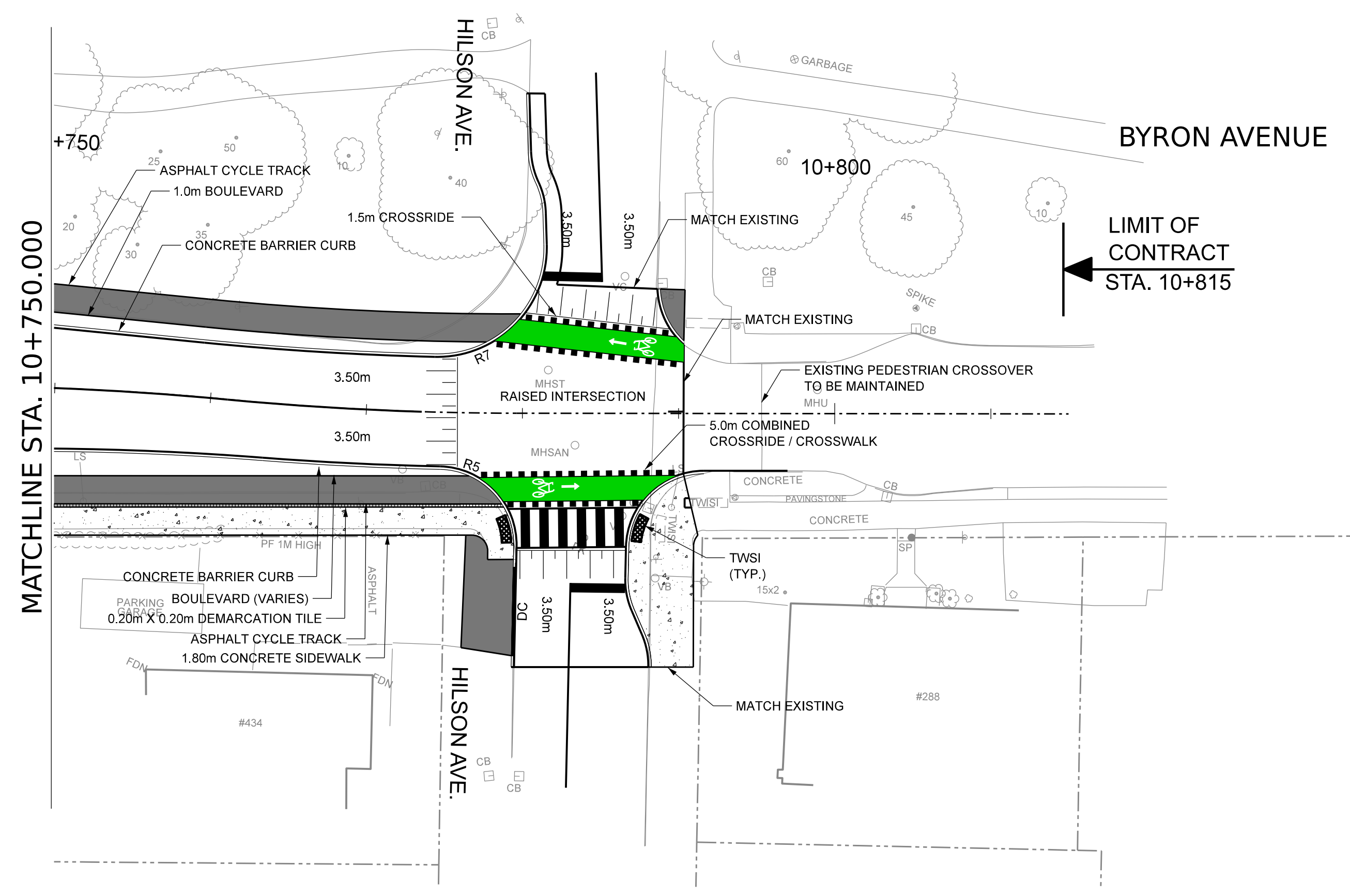
FOR CONTINUATION SEE DWG. NO. G08

MATCHLINE STA. 10+600.000 SEE DWG. NO. G02

MATCHLINE STA. 10+750.000



FOR CONTINUATION SEE DWG. NO. G08



MATCHLINE STA. 10+750.000

NOTE: The location of utilities is approximate only, the exact location should be determined by consulting the municipal authorities and utility companies concerned. The contractor shall prove the location of utilities and shall be responsible for adequate protection from damage.

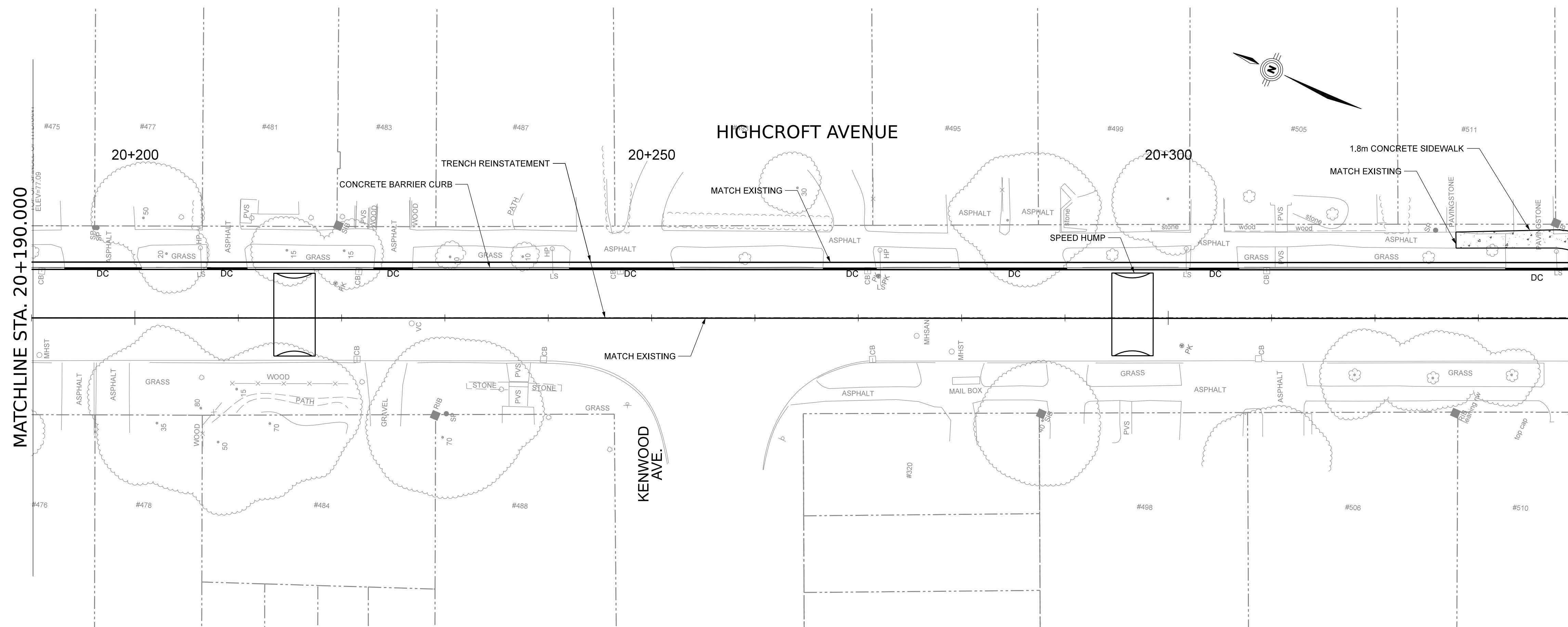
No.	Description	By	Date (dd/mm/yy)
1	ISSUED FOR REVIEW	R.C.	18/03/2020

NOT FOR CONSTRUCTION

FINAL GEOMETRIC CONFIGURATION OF DRIVEWAYS, WALKWAYS, AND LANDSCAPE FEATURES TO BE DETERMINED DURING SUBSEQUENT DESIGN PHASES

FOR CONTINUATION SEE DWG. NO. G01

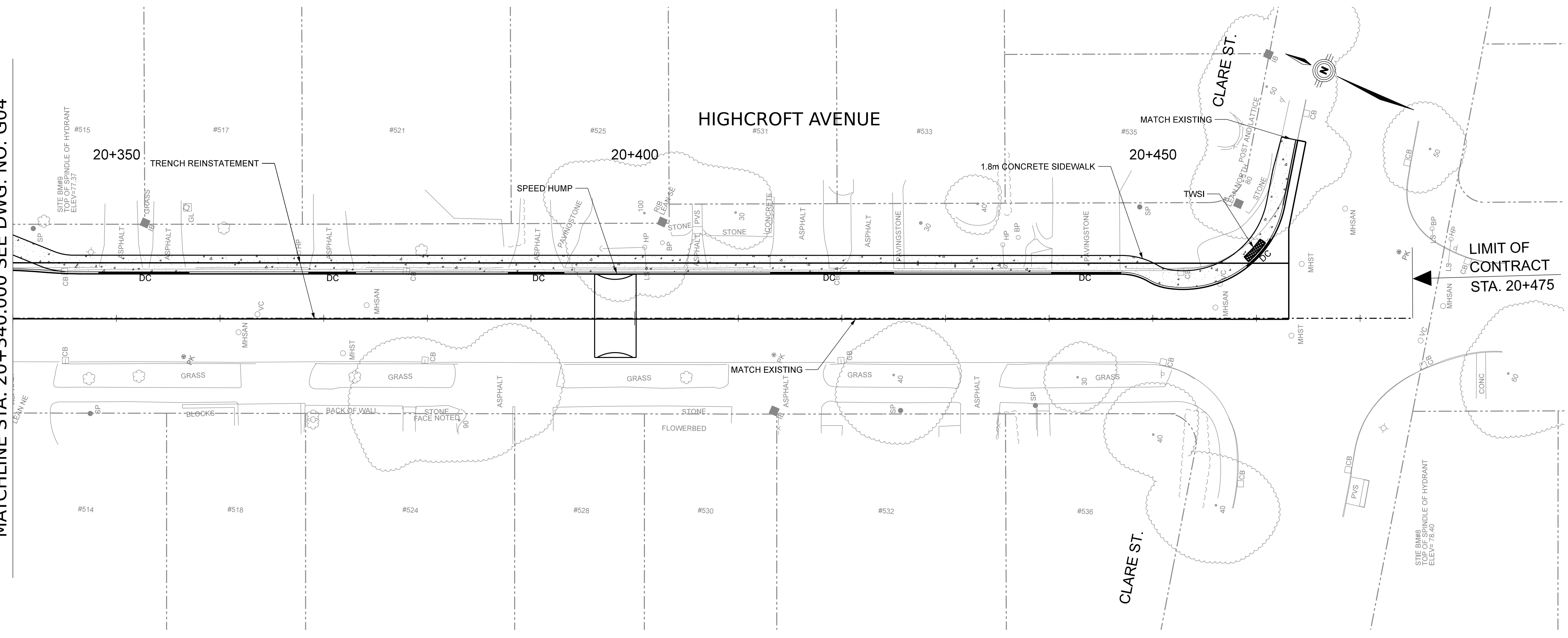
MATCHLINE STA. 20+190.000



MATCHLINE STA. 20+190.000

MATCHLINE STA. 20+340.000 SEE DWG. NO. G05

MATCHLINE STA. 20+340.000 SEE DWG. NO. G04



NOTE: The location of utilities is approximate only, the exact location should be determined by consulting the municipal authorities and utility companies concerned. The contractor shall prove the location of utilities and shall be responsible for adequate protection from damage.

No.	Description	By	Date (dd/mm/yy)
1	ISSUED FOR REVIEW	R.C.	18/03/2020

NOT FOR CONSTRUCTION

FINAL GEOMETRIC CONFIGURATION OF DRIVEWAYS, WALKWAYS, AND LANDSCAPE FEATURES TO BE DETERMINED DURING SUBSEQUENT DESIGN PHASES

NOTE: The location of utilities is approximate only, the exact location should be determined by consulting the municipal authorities and utility companies concerned. The contractor shall prove the location of utilities and shall be responsible for adequate protection from damage.

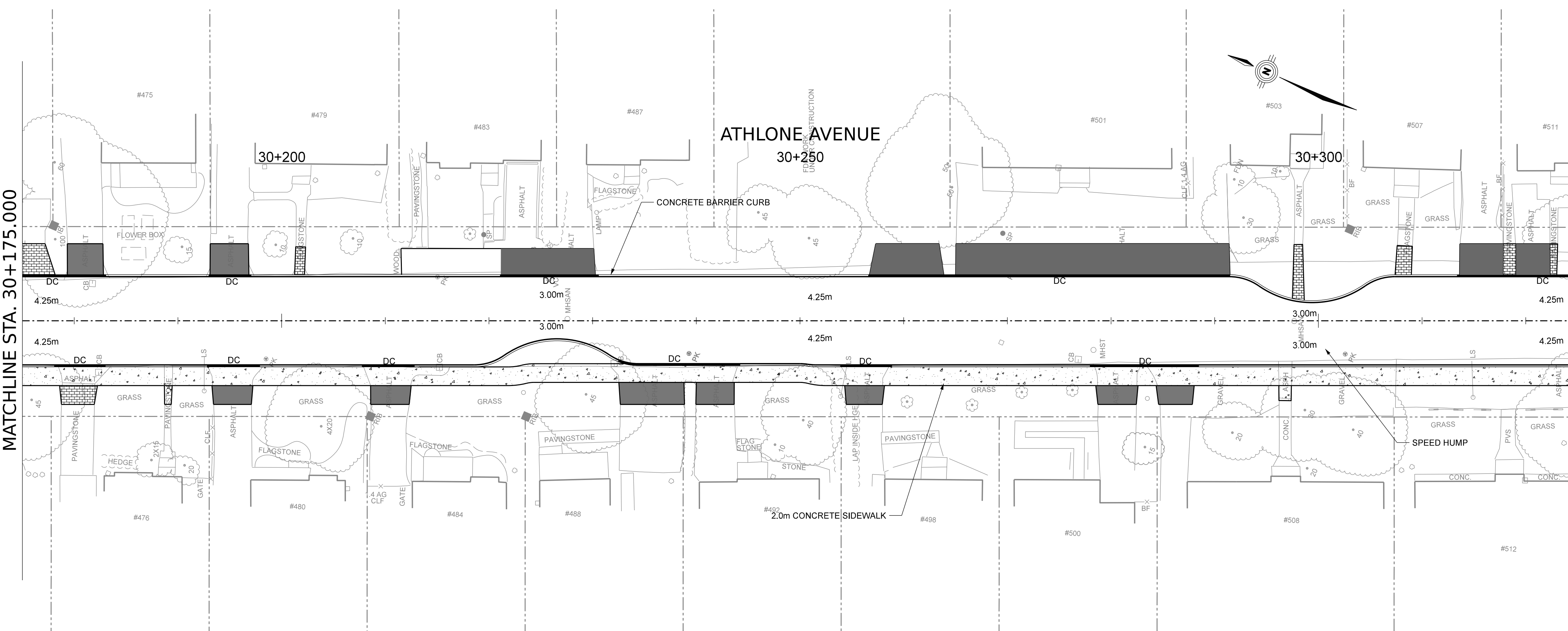
No.	Description	By	Date (dd/mm/yy)
1	ISSUED FOR REVIEW	R.C.	18/03/2020

NOT FOR CONSTRUCTION

FINAL GEOMETRIC CONFIGURATION OF DRIVEWAYS,
WALKWAYS, AND LANDSCAPE FEATURES TO BE
DETERMINED DURING SUBSEQUENT DESIGN PHASES

FOR CONTINUATION SEE DWG. NO. G02

MATCHLINE STA. 30+175.000



MATCHLINE STA. 30+175.000

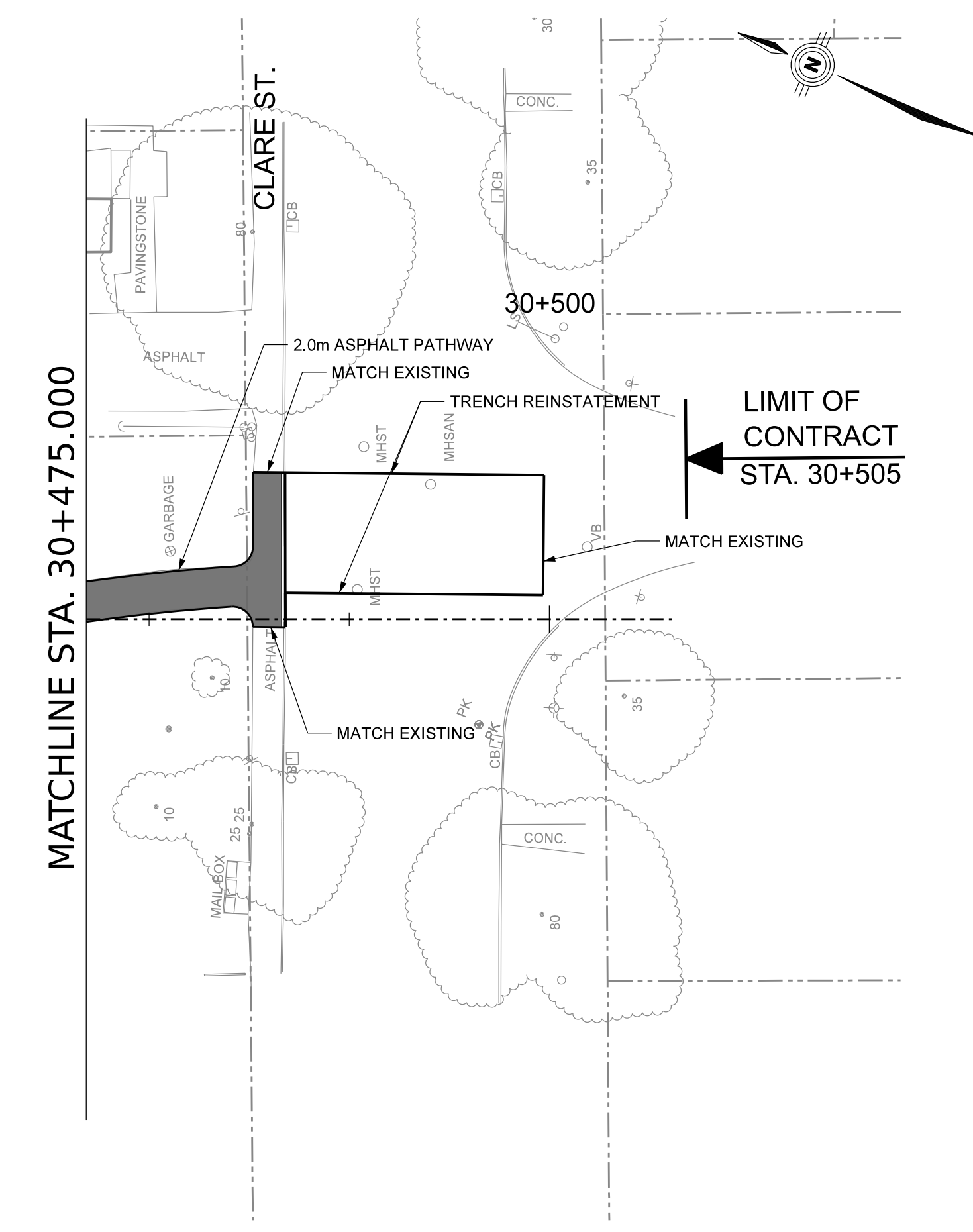
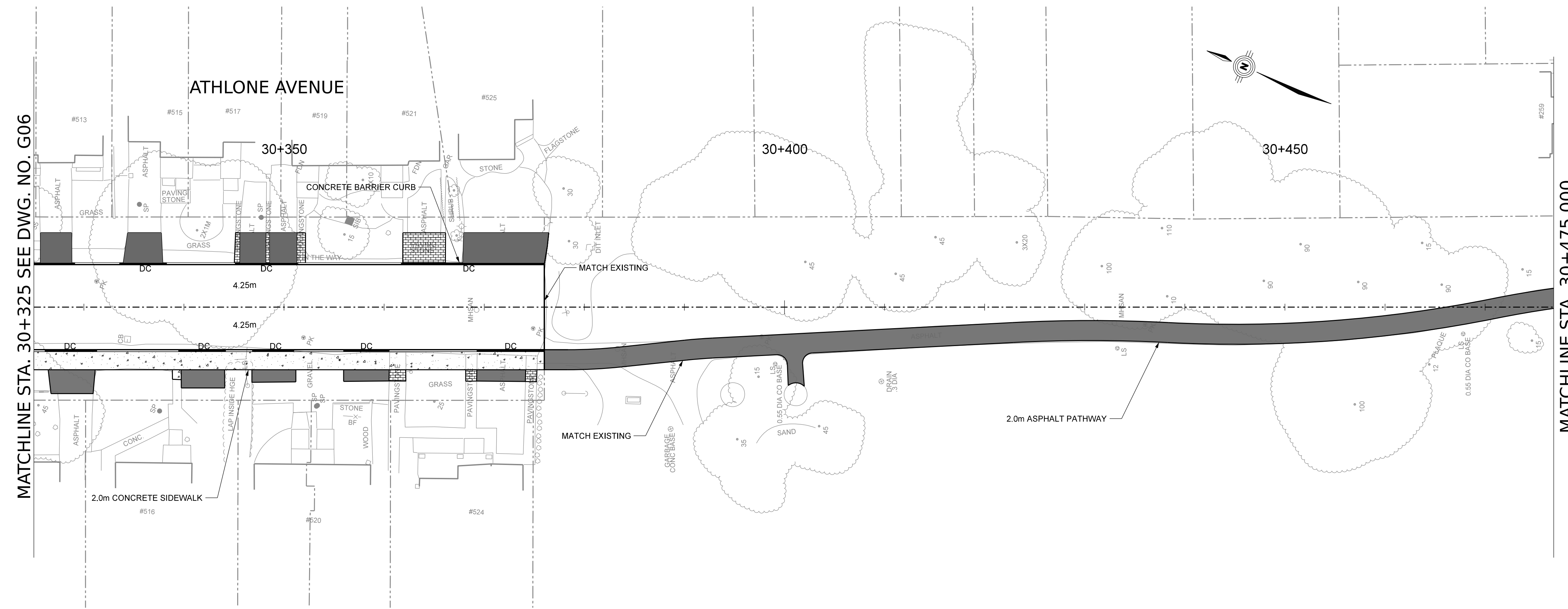
MATCHLINE STA. 30+325.000 SEE DWG. NO. G07

NOTE: The location of utilities is approximate only, the exact location should be determined by consulting the municipal authorities and utility companies concerned. The contractor shall prove the location of utilities and shall be responsible for adequate protection from damage.

REVISIONS	No.	Description	By	Date (dd/mm/yy)
	1	ISSUED FOR REVIEW	R.C.	18/03/2020

NOT FOR CONSTRUCTION

FINAL GEOMETRIC CONFIGURATION OF DRIVEWAYS,
WALKWAYS, AND LANDSCAPE FEATURES TO BE
DETERMINED DURING SUBSEQUENT DESIGN PHASES



MATCHLINE STA. 30+325 SEE DWG. NO. G06

MATCHLINE STA. 30+475.000

MATCHLINE STA. 30+475.000

LIMIT OF
CONTRACT
STA. 30+505

NOTE: The location of utilities is approximate only, the exact location should be determined by consulting the municipal authorities and utility companies concerned. The contractor shall prove the location of utilities and shall be responsible for adequate protection from damage.

No.	Description	By	Date (dd/mm/yy)
1	ISSUED FOR REVIEW	R.C.	18/03/2020

NOT FOR CONSTRUCTION

