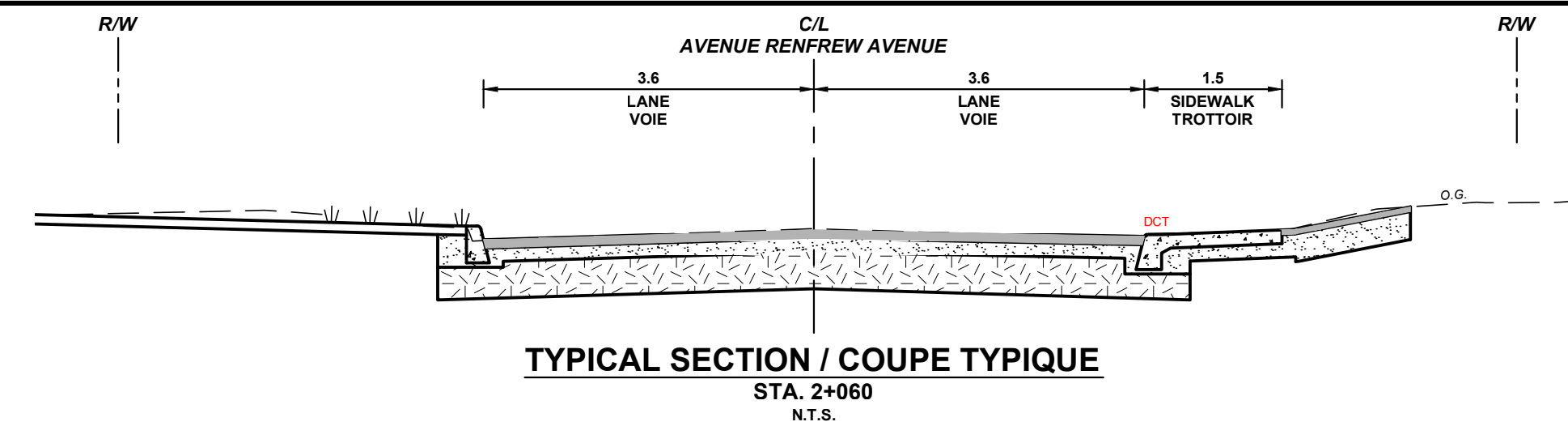
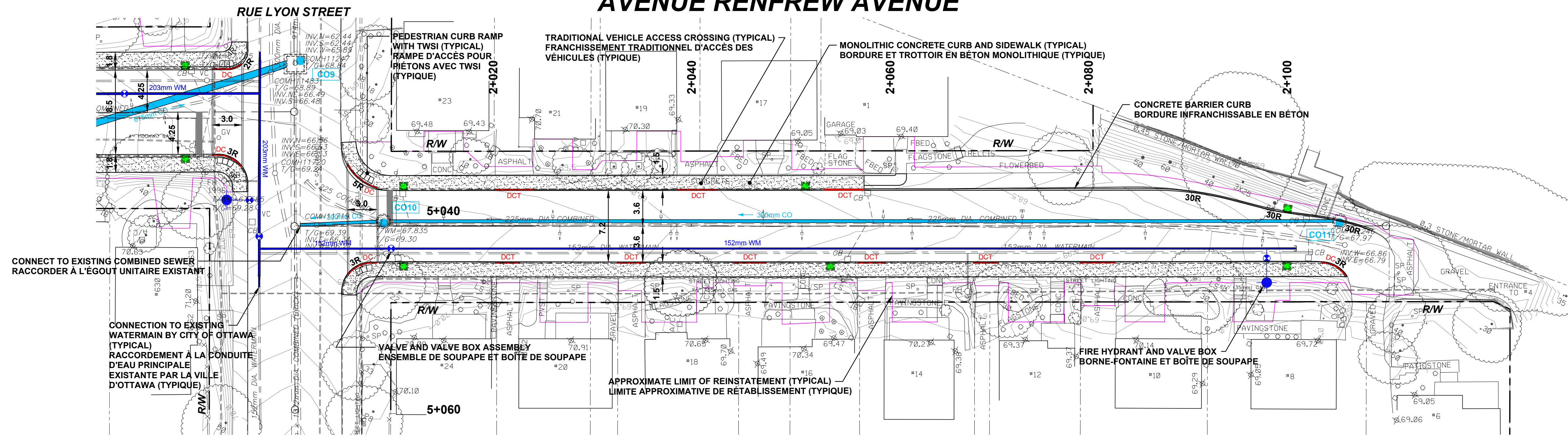


**IMPERIAL AVENUE AND RENFREW AVENUE
RECONSTRUCTION
PRELIMINARY PLAN
PLAN AND PROFILE**

**RÉFÉCTION DE L' AVENUE IMPERIAL
ET L' AVENUE RENFREW
PLAN PRÉLIMINAIRE
PLAN ET PROFIL**



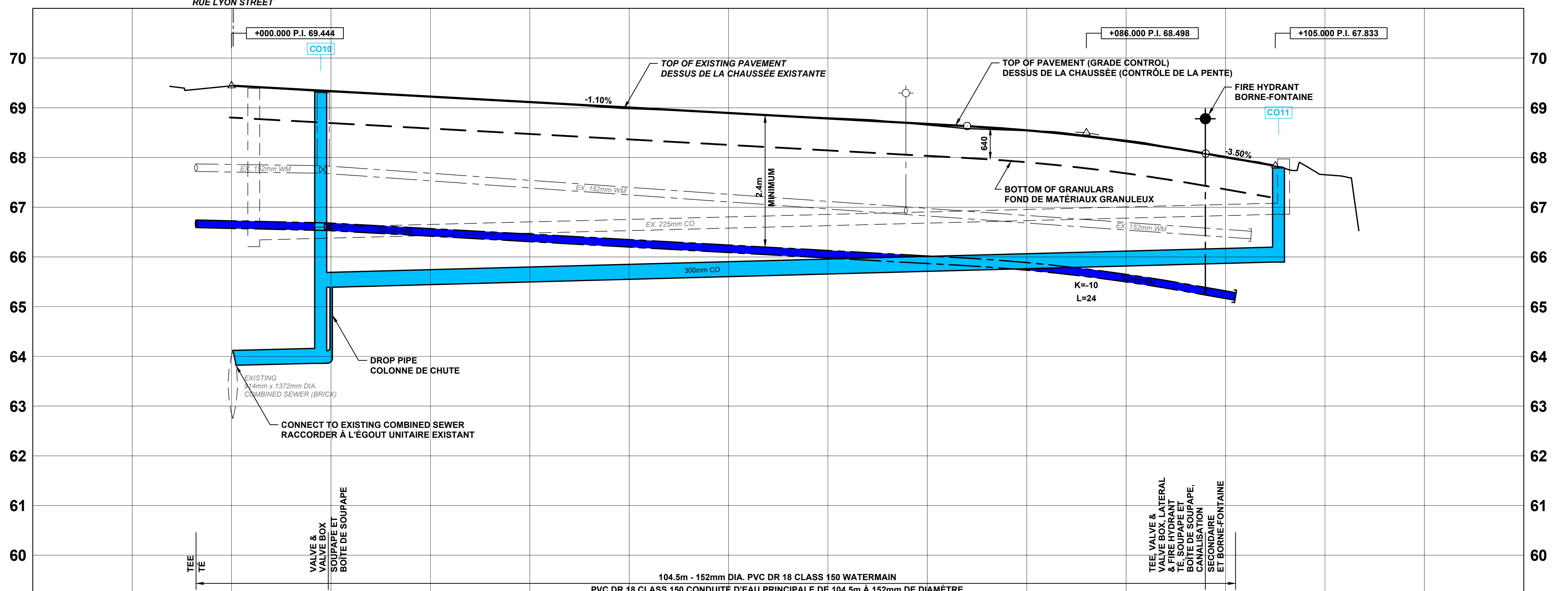
AVENUE RENFREW AVENUE



LEGEND / LÉGENDE:

- EXISTING PROPERTY LINE
LIGNE DE PROPRIÉTÉ EXISTANTE
- COMH --- COMB --- EXISTING COMBINED SEWER
CONDUITE D'ÉGOUT UNITAIRE EXISTANTE
- SAMH --- SA --- EXISTING SANITARY SEWER
CONDUITE D'ÉGOUT SANITAIRE EXISTANTE
- STMH --- ST --- EXISTING STORM SEWER
CONDUITE D'ÉGOUT PLUVIAL EXISTANTE
- VC --- WM --- EXISTING WATERMAIN
CONDUITE D'EAU PRINCIPALE EXISTANTE
- FH --- VB --- EXISTING FIRE HYDRANT AND VALVE BOX
BORNE-FONTAINE EXISTANTE
- BMH --- B --- EXISTING COMMUNICATION
CÂBLE DE COMMUNICATION EXISTANT
- CATV --- CATV --- EXISTING CABLE TELEVISION
CÂBLE DE TELEVISION EXISTANT
- GV --- GAS --- EXISTING GAS MAIN
CONDUITE DE GAZ EXISTANTE
- LS --- L --- EXISTING STREET LIGHTING
CÂBLE D'ÉCLAIRAGE DE RUE EXISTANT
- HHH --- H --- EXISTING HYDRO
CÂBLE HYDRO EXISTANT
- TMM --- T --- EXISTING TRAFFIC SIGNALS
FEUX DE CIRCULATION EXISTANTE

- R/W --- EXISTING ROAD RIGHT-OF-WAY
EMPRISE ROUTIÈRE ACTUELLE
- DC --- DEPRESSED CURB
BORDURE EN DÉPRESSION
- DCT --- DEPRESSED CURB - TRADITIONAL VEHICLE CROSSING
BORDURE EN DÉPRESSION - FRANCHISSEMENT DE VÉHICULE TRADITIONNEL
- DCR --- DEPRESSED CURB - RAMP STYLE VEHICLE CROSSING
BORDURE EN DÉPRESSION - FRANCHISSEMENT DE VÉHICULE DE STYLE RAMPE
- CONCRETE SIDEWALK
TROTTOIR EN BÉTON
- CATCHBASIN
PUISSARD DE RUE
- PROPOSED COMBINED SEWER
ÉGOUT UNITAIRE PROPOSÉE
- PROPOSED WATERMAIN
CONDUITE D'EAU PRINCIPALE PROPOSÉE
- FIRE HYDRANT AND VALVE BOX
BOUCHE D'INCENDIE ET BOUCHE À CLÉ



STATION	63.821	63.864	63.885	66.570	66.570	66.460	66.350	66.240	66.130	66.020	65.886	65.650	65.389	65.318	65.283	67.658	67.653	
TOP OF WATERMAIN	66.742	66.725	66.744	69.444	69.440	66.683	66.680	66.570	66.460	66.350	66.240	66.130	66.020	65.886	65.650	65.389	65.318	65.283
COMBINED INVERT	63.821	63.864	63.885	66.570	66.570	66.460	66.350	66.240	66.130	66.020	65.886	65.650	65.389	65.318	65.283	67.658	67.653	
STATION	1+996.43	2+000	2+009.48	2+010	2+020	2+030	2+040	2+050	2+060	2+070	2+080	2+090	2+097.96	2+100	2+101.0	2+110	2+120	2+130

