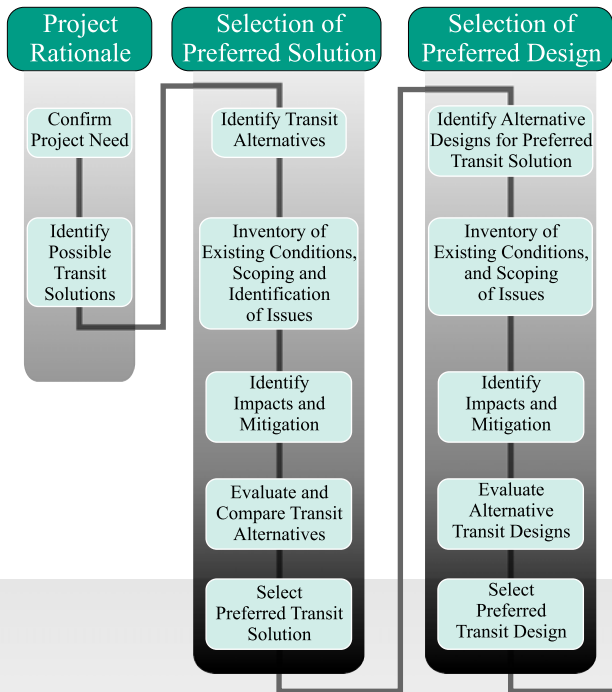


Study Process

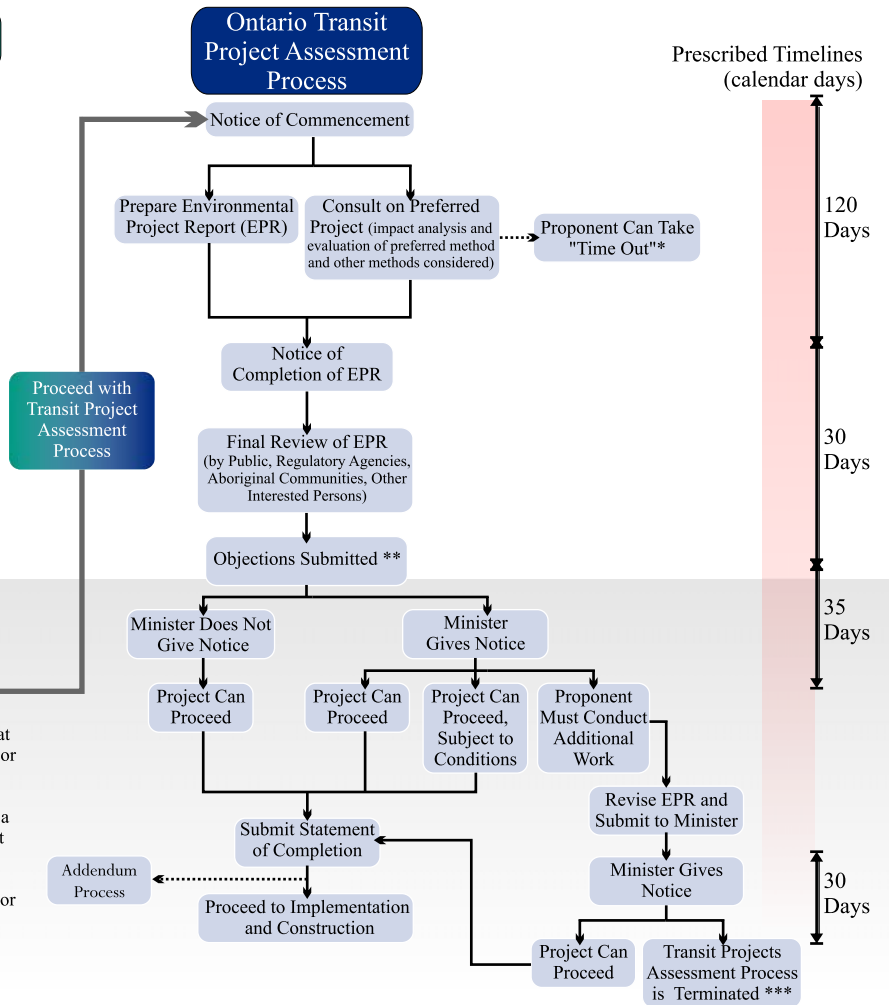
The Study will follow a two-step process:

- A Planning and Functional Design Stage (underway) to determine the rapid transit corridor, alignment, station locations and layouts as well as addressing local planning issues
- An Environmental Assessment Stage to meet the requirements of the provincial Transit Project Assessment Process and the federal Canadian Environmental Assessment Act
- At the end of each stage the study findings will be presented to the City's Transit Committee, and to City Council

Project Planning Phase



Project Environmental Assessment Phase



* Proponent can take a "time out" only when there is a potential importance that relates to the natural environment or on constitutionally protected aboriginal or treaty rights

** Given the Minister's authority to act, concerns or objections should be on the basis that a proposed transit project may have a potential negative impact on a matter of provincial importance that relates to the natural environment or that has a cultural heritage value or interest, or on a constitutionally protected aboriginal or treaty right

*** Proponent must follow an approved class environmental assessment process or the process under Part II of the *Environmental Assessment Act*