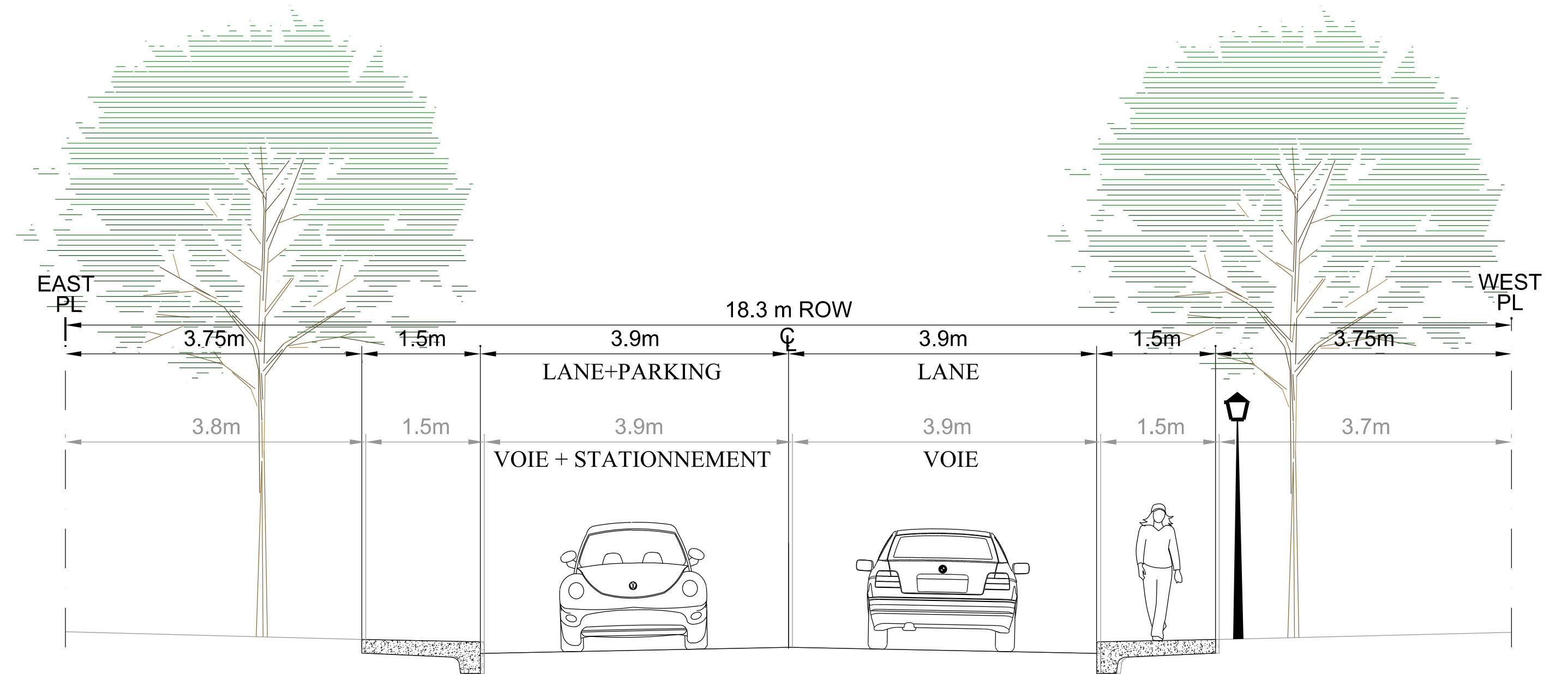
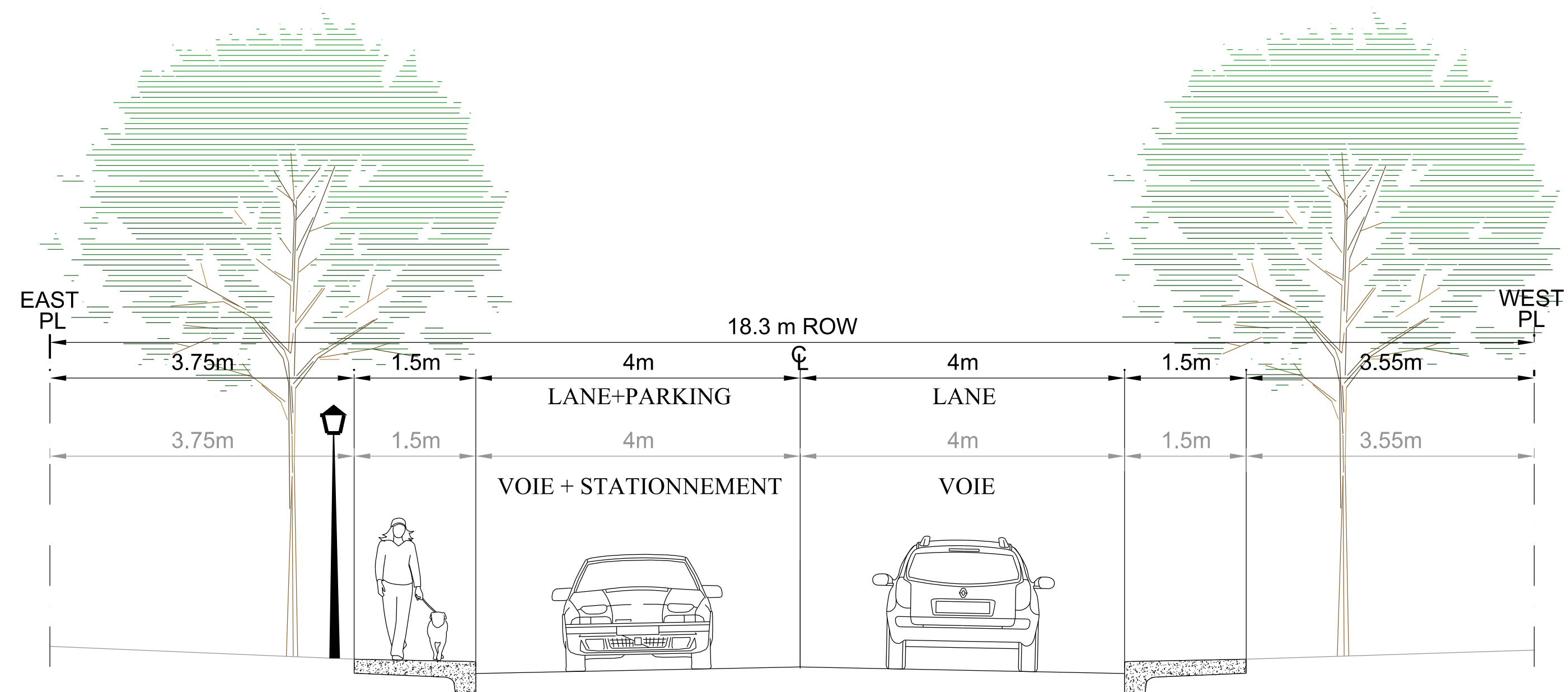


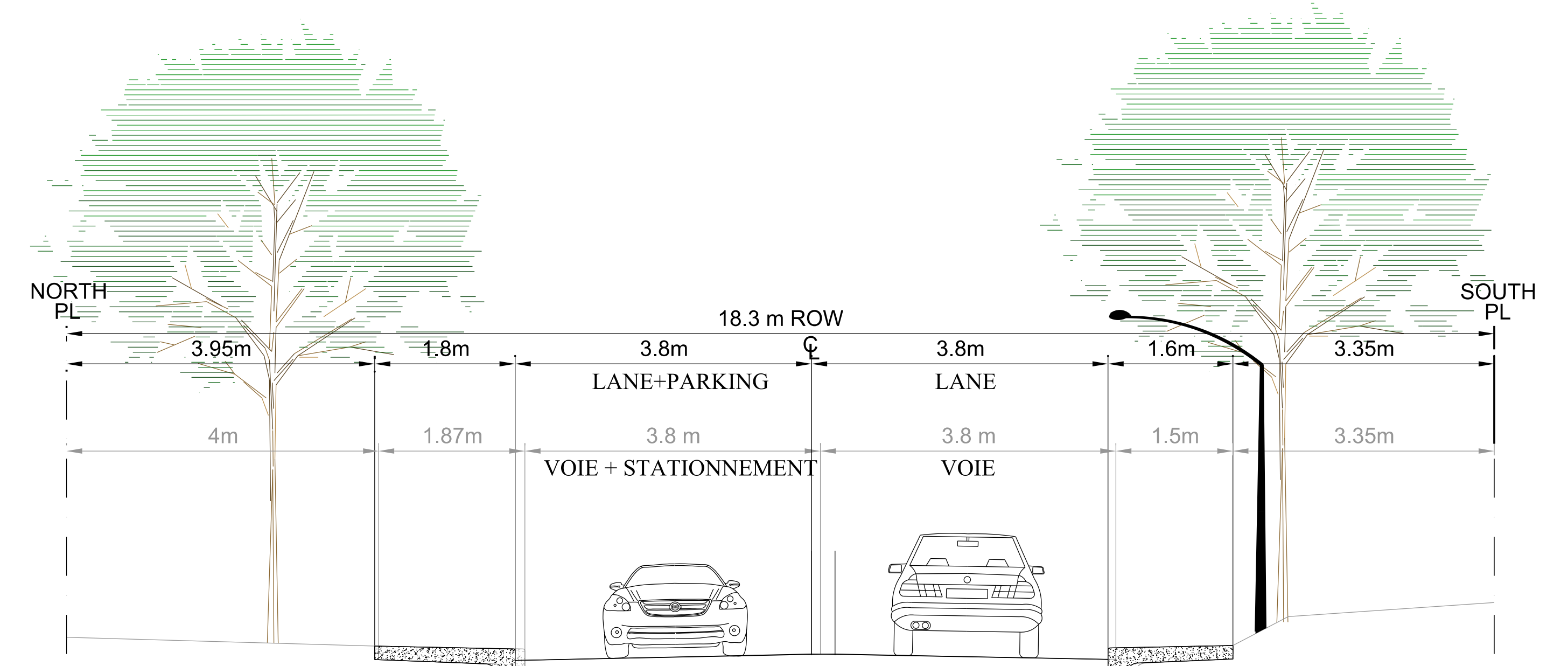
Willard Street - Sunnyside Avenue to Belmont Avenue  
 Rue Willard - Avenue Sunnyside à l'avenue Belmont



Bellwood Avenue - Sunnyside Avenue to Belmont Avenue  
 Avenue Bellwood - Avenue Sunnyside à l'avenue Belmont



Fairbairn Street - Sunnyside Avenue to Belmont Avenue  
 Rue Fairbairn - Avenue Sunnyside à l'avenue Belmont



Belmont Avenue - Bank Street to Riverdale Avenue  
 Avenue Belmont - Rue Bank à l'avenue Riverdale



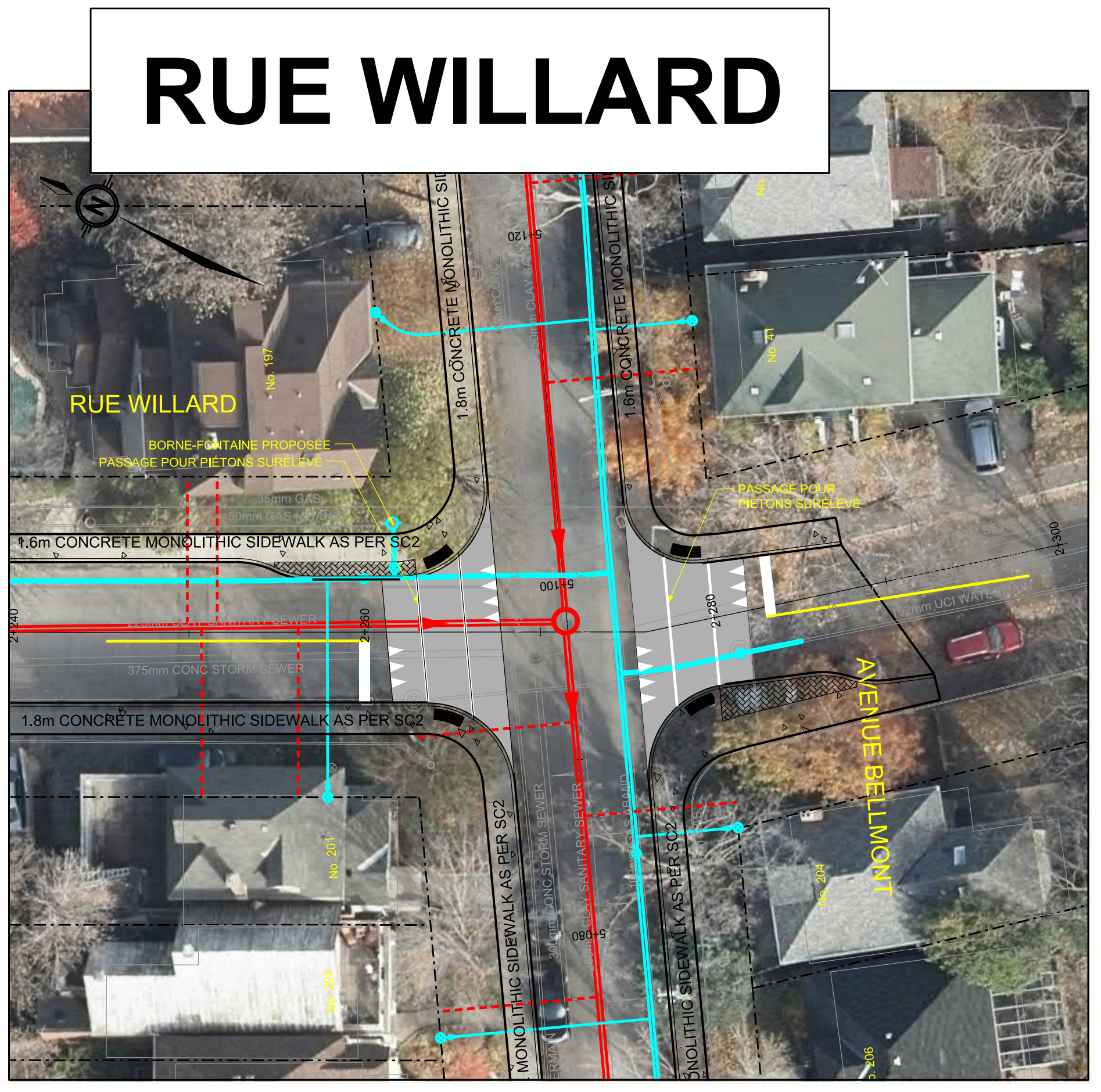
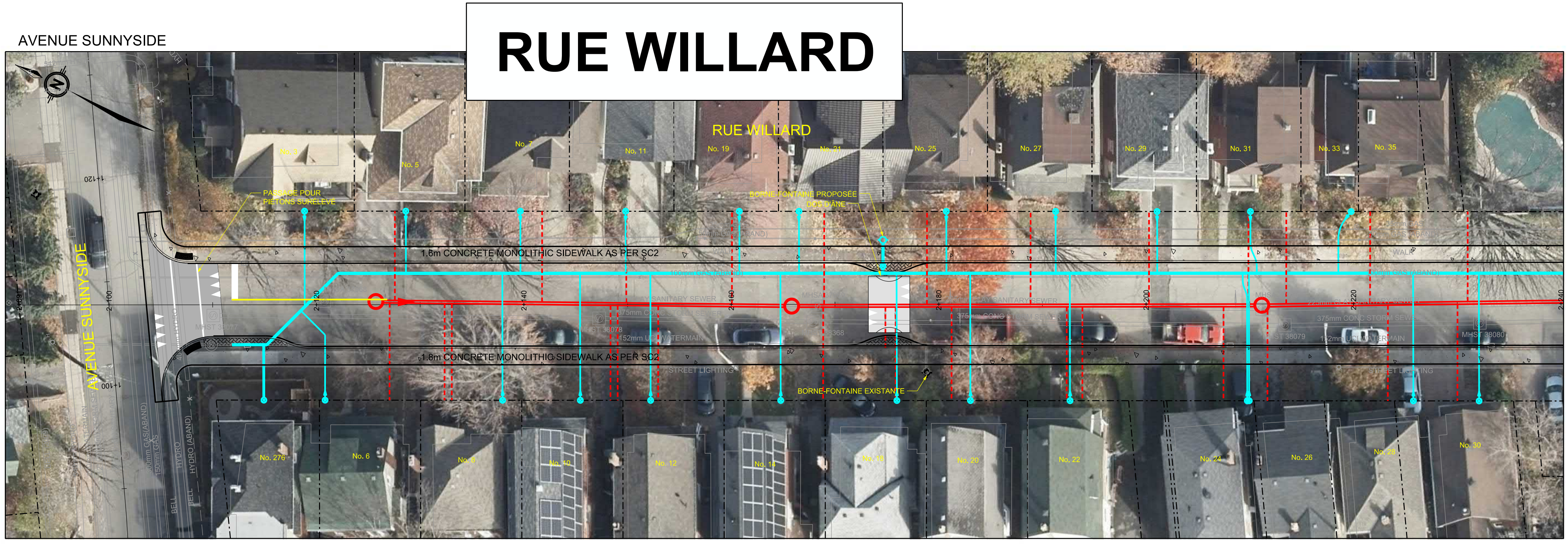
FAIRBAIRN ST, BELLWOOD AVE, WILLARD ST, BELMONT AVE - ROAD, SEWER AND WATERMAIN RECONSTRUCTION			
GEOMETRY AND GENERAL LAYOUT WILLARD STREET 2+090 TO 2+300		Contract No. CP000159	Dwg. No.
		Sheet	of
CARINA DUCLOS DIRECTOR I.S.		LEI GONG, P.Eng. Project Manager	
McINTOSH PERRY 115 Walgreen Road, RR3, Carp, ON K0A 1J0 Tel: 613-836-2184 Fax: 613-836-3742 www.mcintoshperry.com		Asset No.	Asset Group ISD
		Des.	Chk'd.
		J.H.	D.R.B.
		Dwn.	Chk'd.
		J.H.	
		Utility Circ. No.	Index No.
		Const. Inspector	
		Scale:	

NOTE: The location of utilities is approximate only, the exact location should be determined by consulting the municipal authorities and utility companies concerned. The contractor shall prove the location of utilities and shall be responsible for adequate protection from damage.

No.	Description	By	Date (dd/mm/yy)

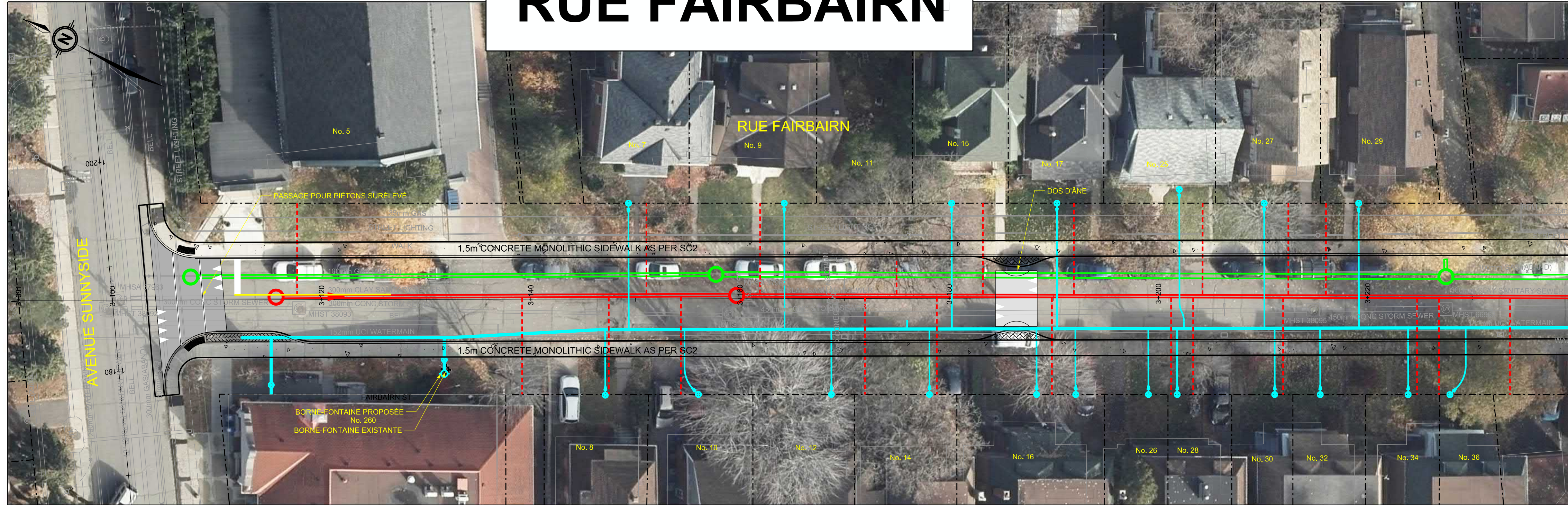
### LEGEND / LÉGENDE

- WATERMAIN  
CONDUITE D'EAU PRINCIPALE
- WATER SERVICE  
SERVICE D'EAU
- SANITARY SEWER  
ÉGOUT SANITAIRE
- SANITARY SERVICE  
SERVICES DES ÉGOUTS SANITAIRES
- STORM SEWER  
ÉGOUT ORAGE
- CONCRETE SIDEWALK  
TROTTOIR EN BÉTON
- TACTILE WALKING SURFACE  
INDICATOR (TWSI)  
INDICATEUR TACTILE DE SURFACE  
DE MARCHÉ





# RUE FAIRBAIRN



MATCHLINE STA. 3+240

FAIRBAIRN ST, BELLWOOD AVE, WILLARD ST, BELMONT AVE - ROAD, SEWER AND WATERMAIN RECONSTRUCTION			
GEOMETRY AND GENERAL LAYOUT FAIRBAIRN STREET 3+090 TO 3+280		Contract No. CP000159	Dwg. No.
		Sheet of	
		Asset No.	
CARINA DUCLOS DIRECTOR I.S.	LEI GONG, P.Eng. Project Manager	Asset Group ISD	
<b>McINTOSH PERRY</b> 115 Walgreen Road, RR3, Carp, ON K0A 1J0 Tel: 613-836-2184 Fax: 613-836-3742 www.mcintoshperry.com		Des. J.H.	Chk'd. D.R.B.
		Dwn. J.H.	Chk'd.
		Utility Circ. No.	Index No.
		Const. Inspector	
		Scale:	

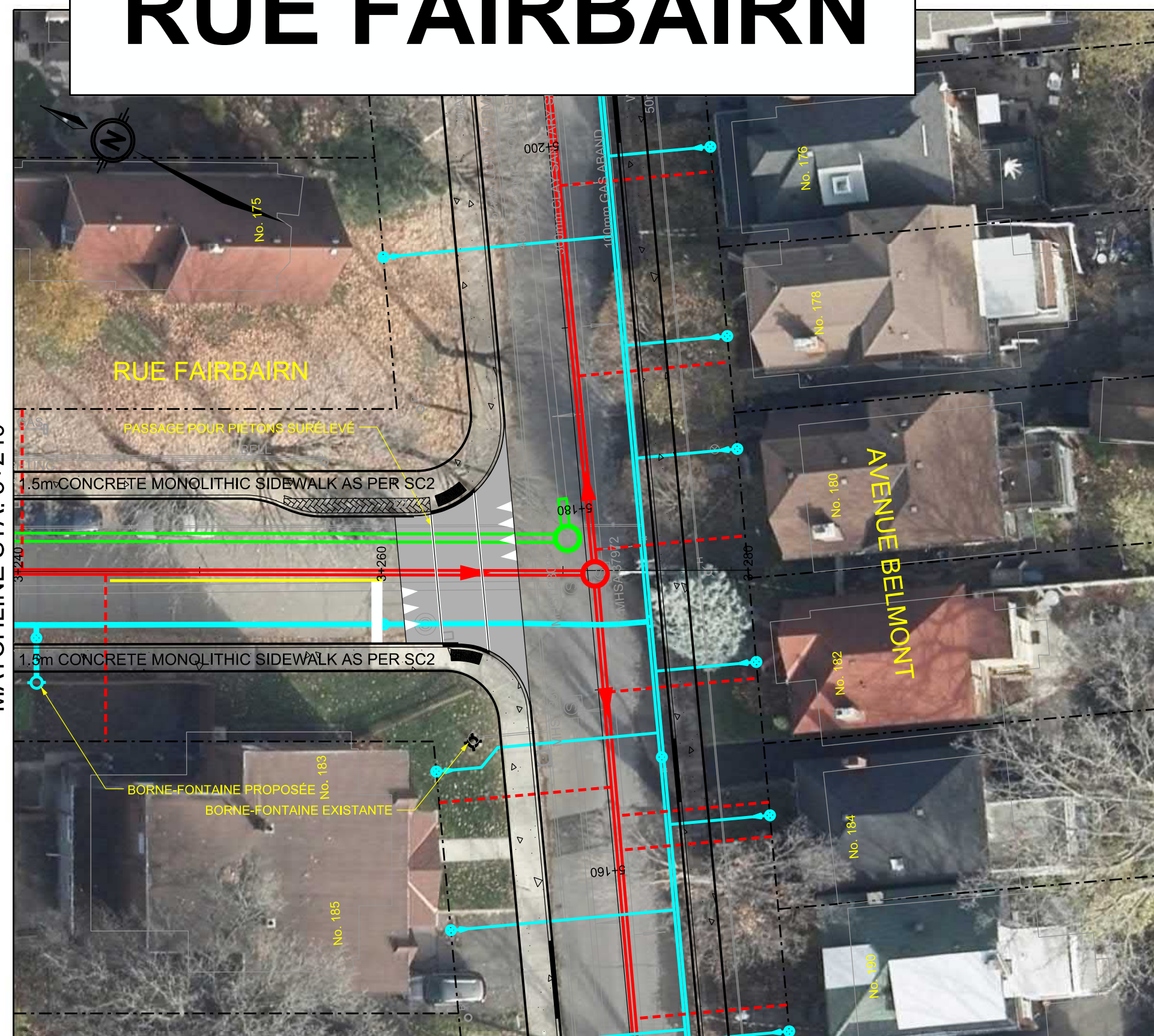
NOTE: The location of utilities is approximate only, the exact location should be determined by consulting the municipal authorities and utility companies concerned. The contractor shall prove the location of utilities and shall be responsible for adequate protection from damage.

No.	Description	By	Date (dd/mm/yy)

## LEGEND / LÉGENDE

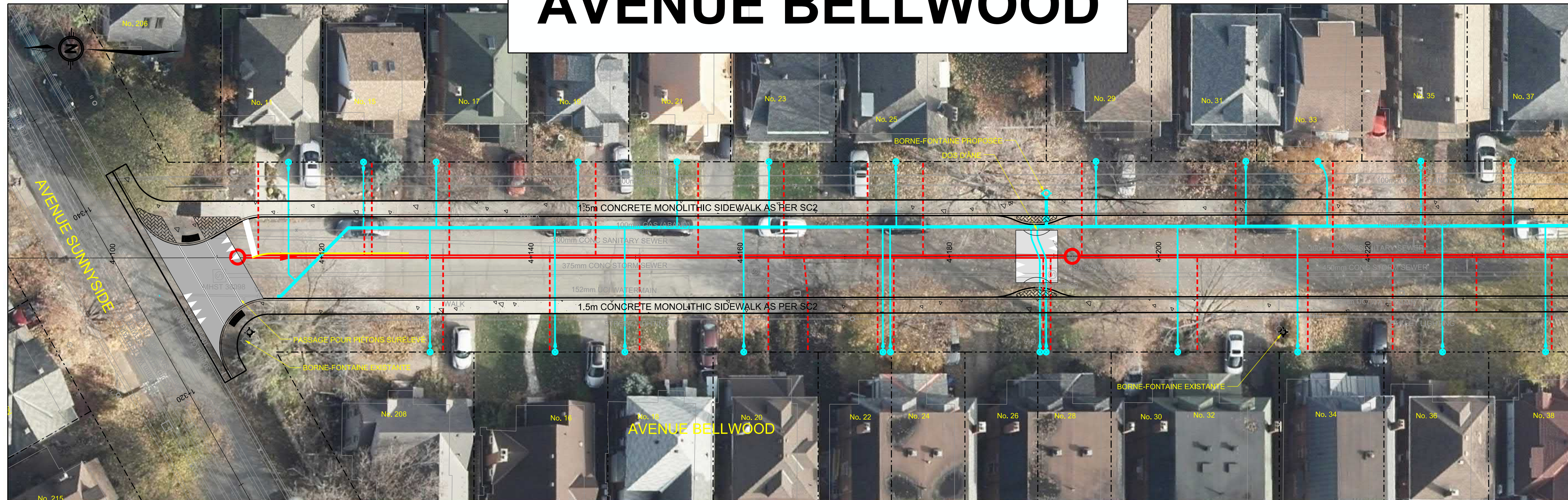
- WATERMAIN  
CONDUITE D'EAU PRINCIPALE
- WATER SERVICE  
SERVICE D'EAU
- SANITARY SEWER  
ÉGOUT SANITAIRE
- SANITARY SERVICE  
SERVICES DES ÉGOUTS SANITAIRES
- CONCRETE SIDEWALK  
TROTTOIR EN BÉTON
- STORM SEWER  
ÉGOUT ORAGE
- TACTILE WALKING SURFACE  
INDICATOR (TWSI)  
INDICATEUR TACTILE DE SURFACE  
DE MARCHÉ

# RUE FAIRBAIRN





# AVENUE BELLWOOD



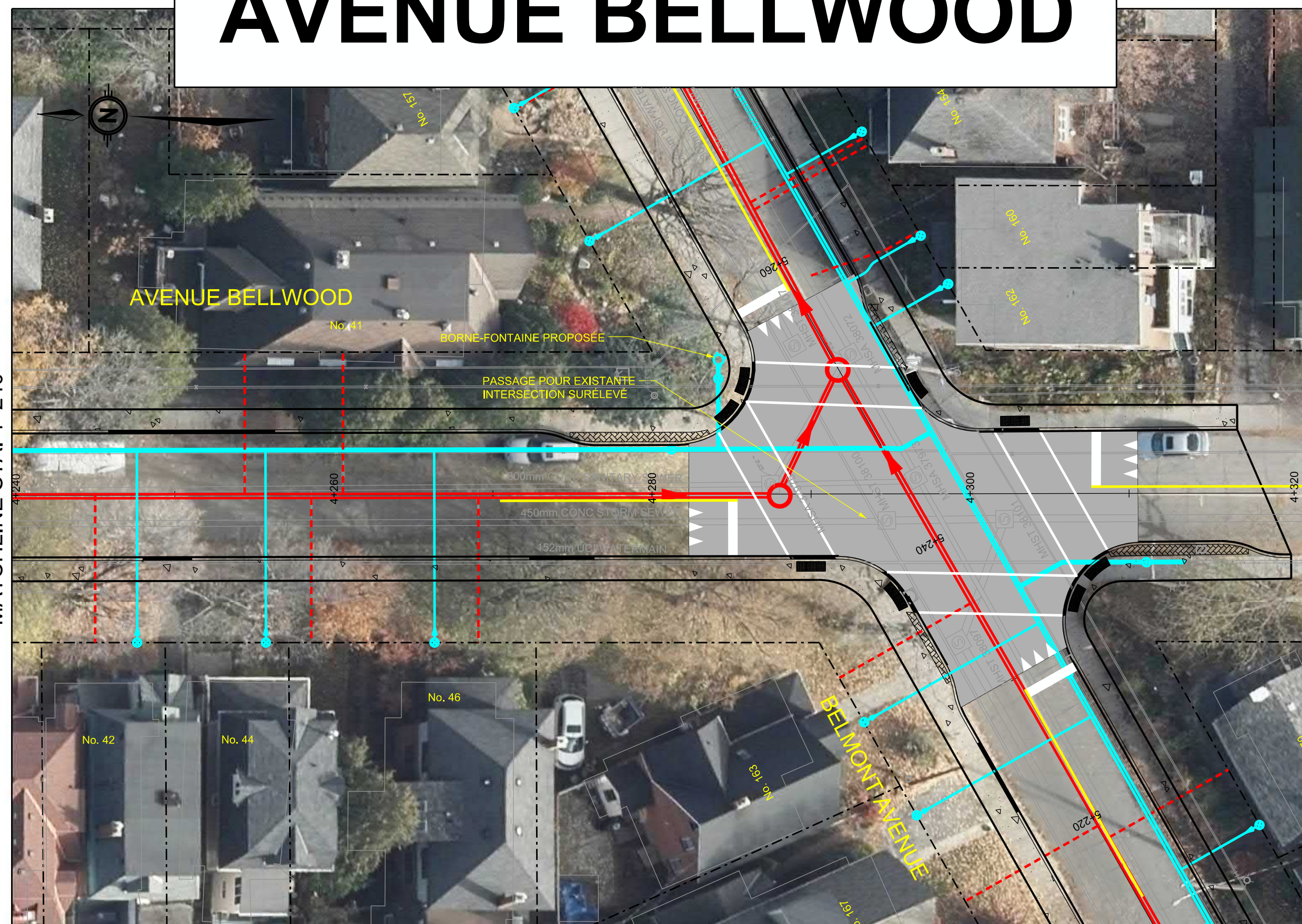
MATCHLINE STA. 4+240

FAIRBAIRN ST, BELLWOOD AVE, WILLARD ST, BELMONT AVE - ROAD, SEWER AND WATERMAIN RECONSTRUCTION			
GEOMETRY AND GENERAL LAYOUT BELLWOOD AVENUE 4+090 TO 4+320		Contract No. CP000159	Dwg. No.
		Sheet	of
CARINA DUCLOS DIRECTOR I.S.		LEI GONG, P.Eng. Project Manager	
<b>McINTOSH PERRY</b> 115 Walgreen Road, RR3, Carp, ON K0A 1L0 Tel: 613-836-2184 Fax: 613-836-3742 www.mcintoshperry.com		Asset Group <b>ISD</b>	
		Des.	Chk'd.
		J.H.	D.R.B.
		Dwn.	Chk'd.
		J.H.	
		Utility Circ. No.	Index No.
		Const. Inspector	
		Scale:	

NOTE: The location of utilities is approximate only, the exact location should be determined by consulting the municipal authorities and utility companies concerned. The contractor shall prove the location of utilities and shall be responsible for adequate protection from damage.

No.	Description	By	Date (dd/mm/yy)

# AVENUE BELLWOOD



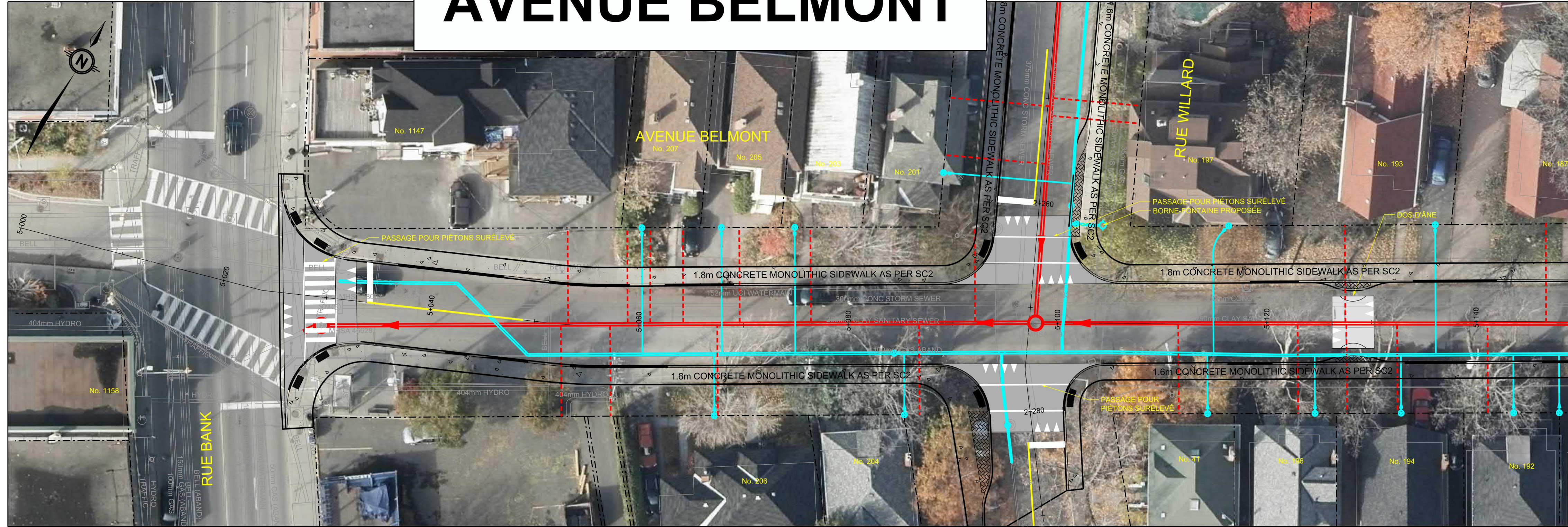
MATCHLINE STA. 4+240

## LEGEND / LÉGENDE

- WATERMAIN  
CONDUITE D'EAU PRINCIPALE
- WATER SERVICE  
SERVICE D'EAU
- SANITARY SEWER  
ÉGOUT SANITAIRE
- SANITARY SERVICE  
SERVICES DES ÉGOUTS SANITAIRES
- CONCRETE SIDEWALK  
TROTTOIR EN BÉTON
- STORM SEWER  
ÉGOUT ORAGE
- TACTILE WALKING SURFACE  
INDICATOR (TWSI)  
INDICATEUR TACTILE DE SURFACE  
DE MARCHÉ

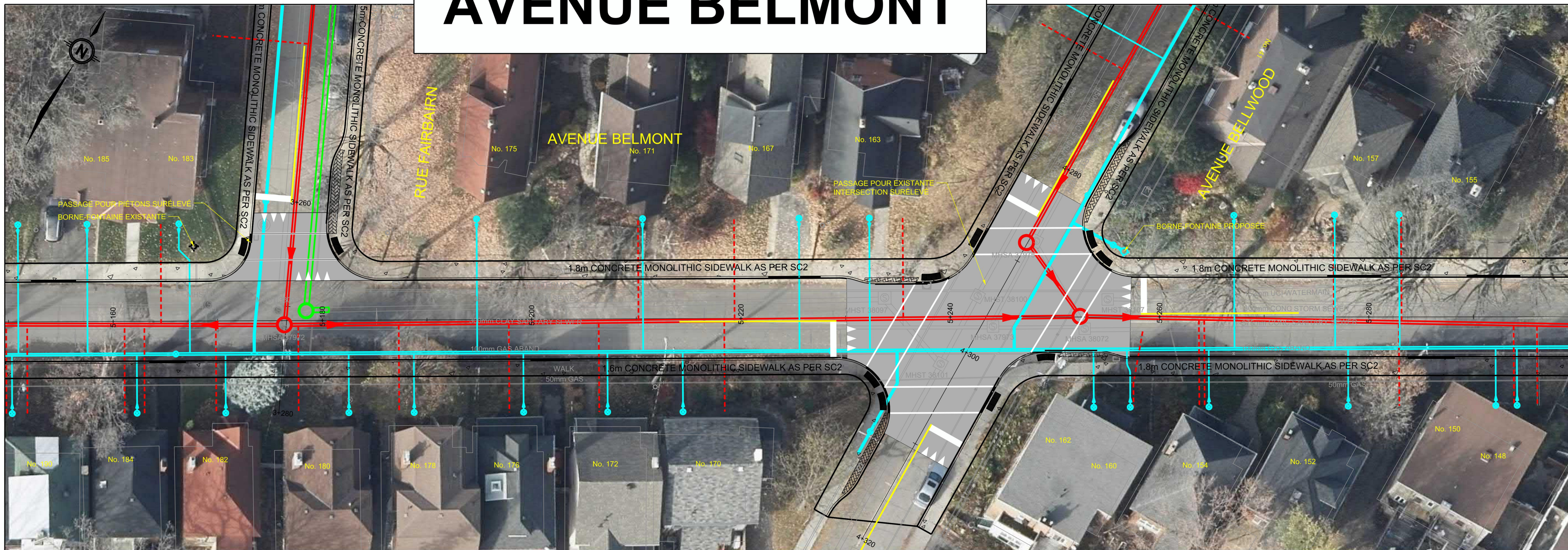


# AVENUE BELMONT



MATCHLINE STA. 5+150

# AVENUE BELMONT



MATCHLINE STA. 5+300

FAIRBAIRN ST, BELLWOOD AVE, WILLARD ST, BELMONT AVE - ROAD, SEWER AND WATERMAIN RECONSTRUCTION			
GEOMETRY AND GENERAL LAYOUT BELMONT AVENUE 5+000 TO 5+300		Contract No. CP000159	Dwg. No.
CARINA DUCLOS DIRECTOR I.S.		LEI GONG, P.Eng. Project Manager	
McINTOSH PERRY 115 Walgreen Road, RR3, Carp, ON K0A 1L0 Tel: 613-836-2184 Fax: 613-836-3742 www.mcintoshperry.com		Asset No.	Asset Group ISD
Des.	J.H.	Chk'd.	D.R.B.
Dwn.	J.H.	Chk'd.	
Utility Circ. No.		Index No.	
Const. Inspector			
Scale:			

NOTE: The location of utilities is approximate only, the exact location should be determined by consulting the municipal authorities and utility companies concerned. The contractor shall prove the location of utilities and shall be responsible for adequate protection from damage.

No.	Description	By	Date (dd/mm/yyyy)

## LEGEND / LÉGENDE

- WATERMAIN  
CONDUITE D'EAU PRINCIPALE
- WATER SERVICE  
SERVICE D'EAU
- SANITARY SEWER  
ÉGOUT SANITAIRE
- SANITARY SERVICE  
SERVICES DES ÉGOUTS SANITAIRES
- CONCRETE SIDEWALK  
TROTTOIR EN BÉTON
- STORM SEWER  
ÉGOUT ORAGE
- TACTILE WALKING SURFACE  
INDICATOR (TWSI)  
INDICATEUR TACTILE DE SURFACE  
DE MARCHÉ



# AVENUE BELMONT



FAIRBAIRN ST, BELLWOOD AVE, WILLARD ST, BELMONT AVE - ROAD, SEWER AND WATERMAIN RECONSTRUCTION			
GEOMETRY AND GENERAL LAYOUT BELMONT AVENUE 5+300 TO 5+340		Contract No. CP000159	Dwg. No.
		Sheet	of
CARINA DUCLOS DIRECTOR I.S.		LEI GONG, P.Eng. Project Manager	
<b>McINTOSH PERRY</b> 115 Walgreen Road, RR3, Carp, ON K0A 1J0 Tel: 613-836-2184 Fax: 613-836-3742 www.mcintoshperry.com		Asset No. ISD	
		Des.	J.H.
		Chk'd.	D.R.B.
		Dwn.	J.H.
		Chk'd.	
		Utility Circ. No.	Index No.
		Const. Inspector	
		Scale:	

NOTE: The location of utilities is approximate only, the exact location should be determined by consulting the municipal authorities and utility companies concerned. The contractor shall prove the location of utilities and shall be responsible for adequate protection from damage.

No.	Description	By	Date (dd/mm/yy)

### LEGEND / LÉGENDE

	WATERMAIN CONDUITE D'EAU PRINCIPALE
	WATER SERVICE SERVICE D'EAU
	SANITARY SEWER ÉGOUT SANITAIRE
	SANITARY SERVICE SERVICES DES ÉGOUTS SANITAIRES
	CONCRETE SIDEWALK TROTTOIR EN BÉTON
	STORM SEWER ÉGOUT ORAGE
	TACTILE WALKING SURFACE INDICATOR (TWSI) INDICATEUR TACTILE DE SURFACE DE MARCHÉ