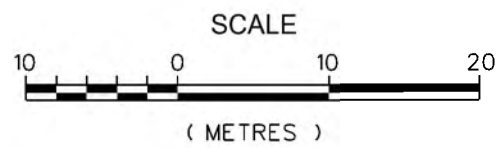
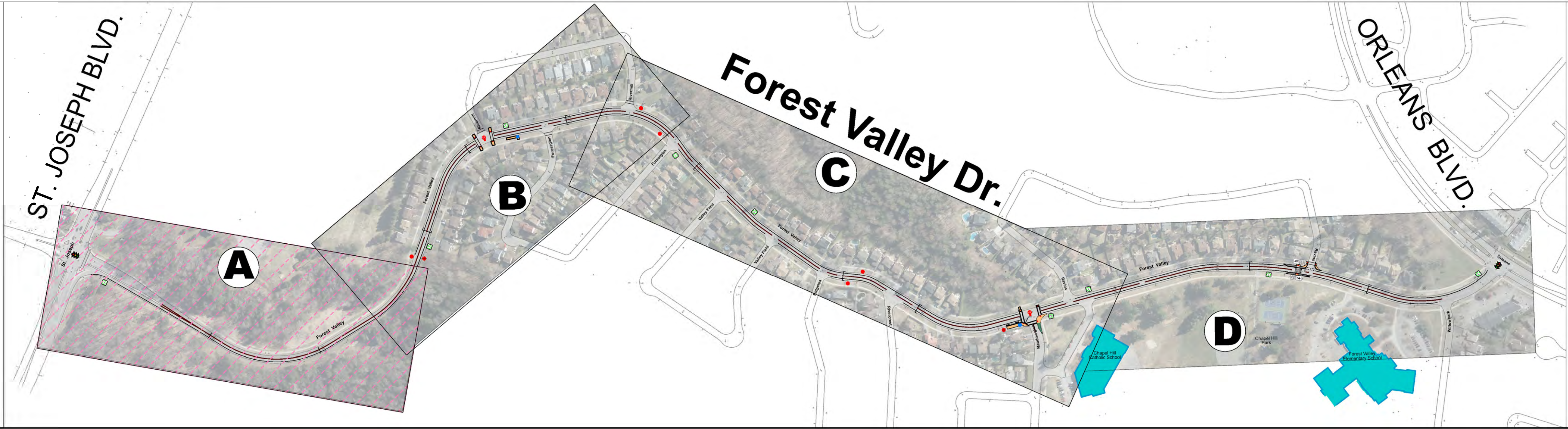




| LEGEND | |
|--------|-------------------|
| | REMOVED BUS STOP |
| | PROPOSED BUS STOP |
| | EXISTING BUS STOP |
| | TRAFFIC SIGNAL |
| | ALL WAY STOP |



Planning, Real Estate
& Economic Dev. Dept.
Transportation Planning



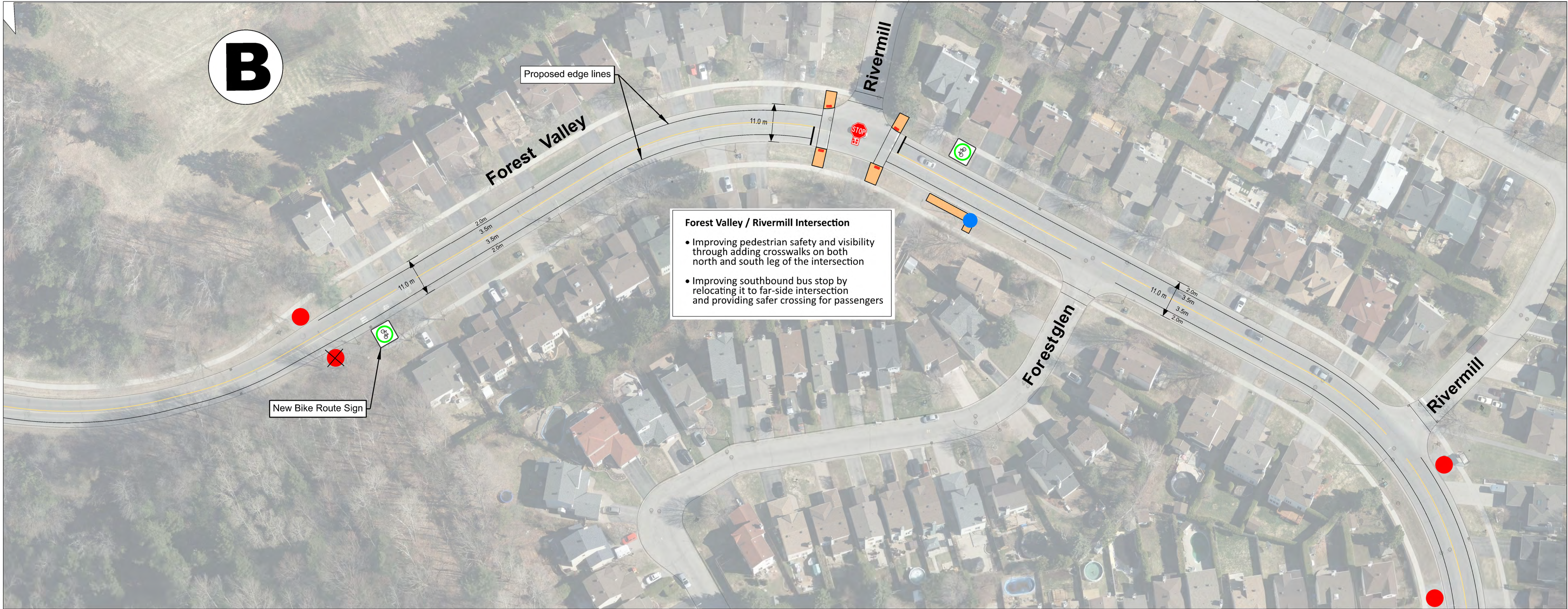
FOREST VALLEY DRIVE

Forest Valley Drive Traffic Calming Study

ST. JOSEPH BLVD. TO ORLEANS BLVD.

Neighbourhood Traffic Calming

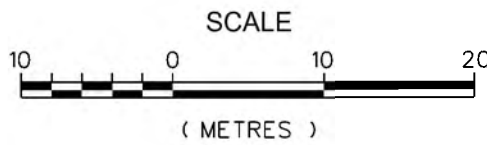
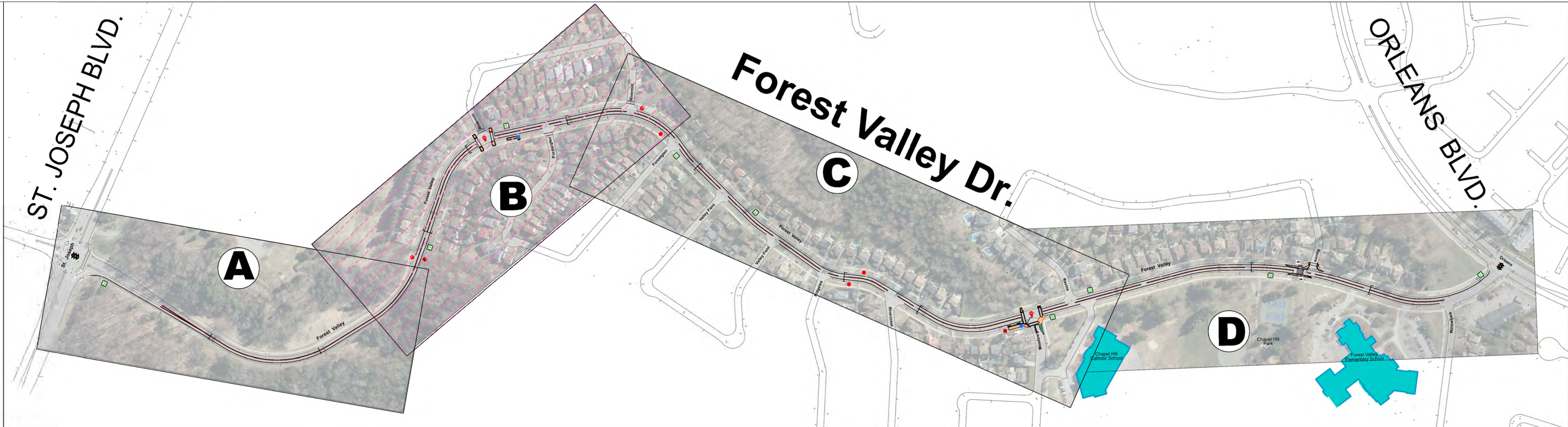
| | | |
|---|--------------------------------|--|
| Reviewed By: <div>Kunjan Ghimire</div> | | Drawing No.: <div>A</div> <div>OPTION 1</div> <div>Sheet 1 of 4</div> |
| Completed By: <div>Ken Taylor</div> | | |
| Scale: <div>1:500</div> | Date: <div>07/21/2022</div> | |



| LEGEND | |
|--------|-------------------|
| | REMOVED BUS STOP |
| | PROPOSED BUS STOP |
| | EXISTING BUS STOP |
| | TRAFFIC SIGNAL |
| | ALL WAY STOP |



Planning, Real Estate
& Economic Dev. Dept.
Transportation Planning



FOREST VALLEY DRIVE

Forest Valley Drive Traffic Calming Study

ST. JOSEPH BLVD. TO ORLEANS BLVD.

Neighbourhood Traffic Calming

Reviewed By:
Kunjan Ghimire

Completed By:
Ken Taylor

Scale:
1:500

Date:
07/21/2022

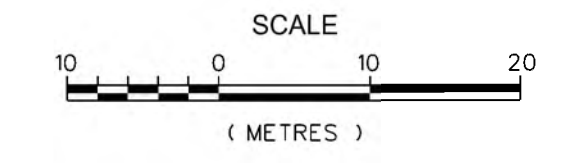
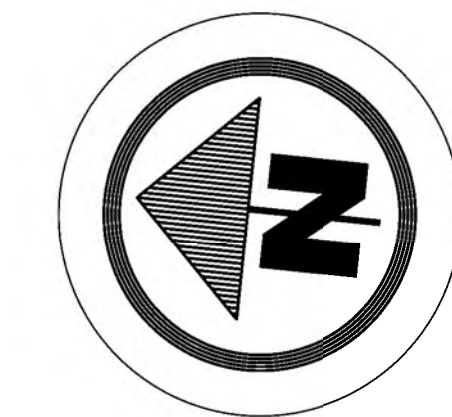
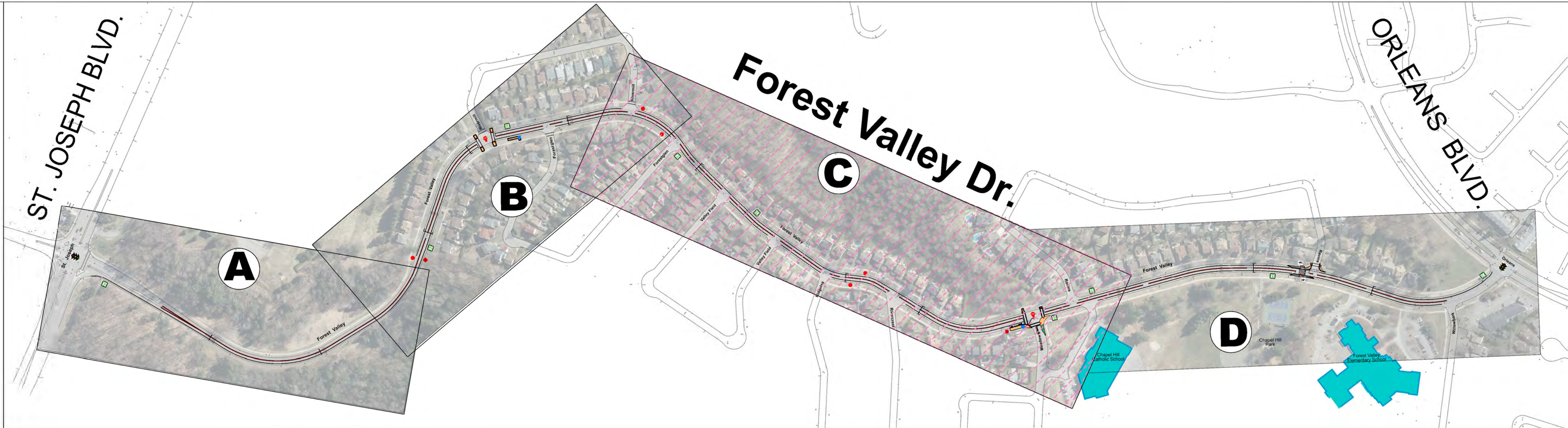
Drawing No.:

B
OPTION 1

Sheet 2 of 4



Planning, Real Estate
& Economic Dev. Dept.
Transportation Planning



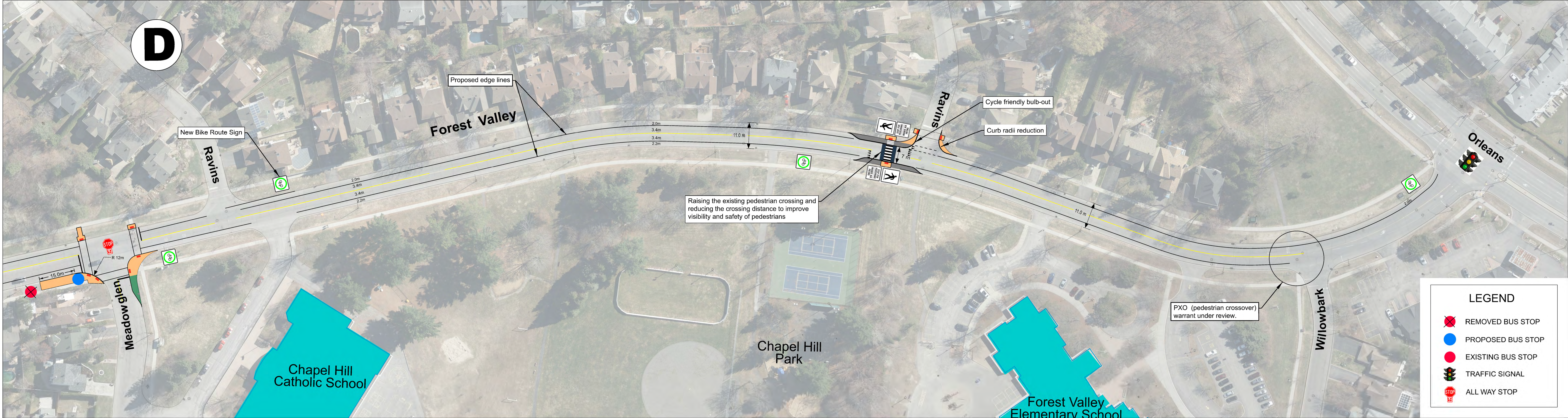
FOREST VALLEY DRIVE

Forest Valley Drive Traffic Calming Study

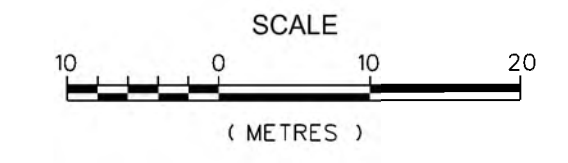
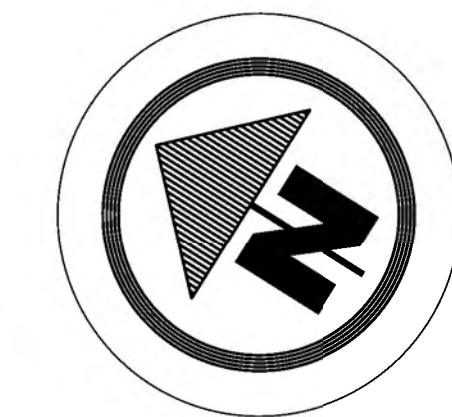
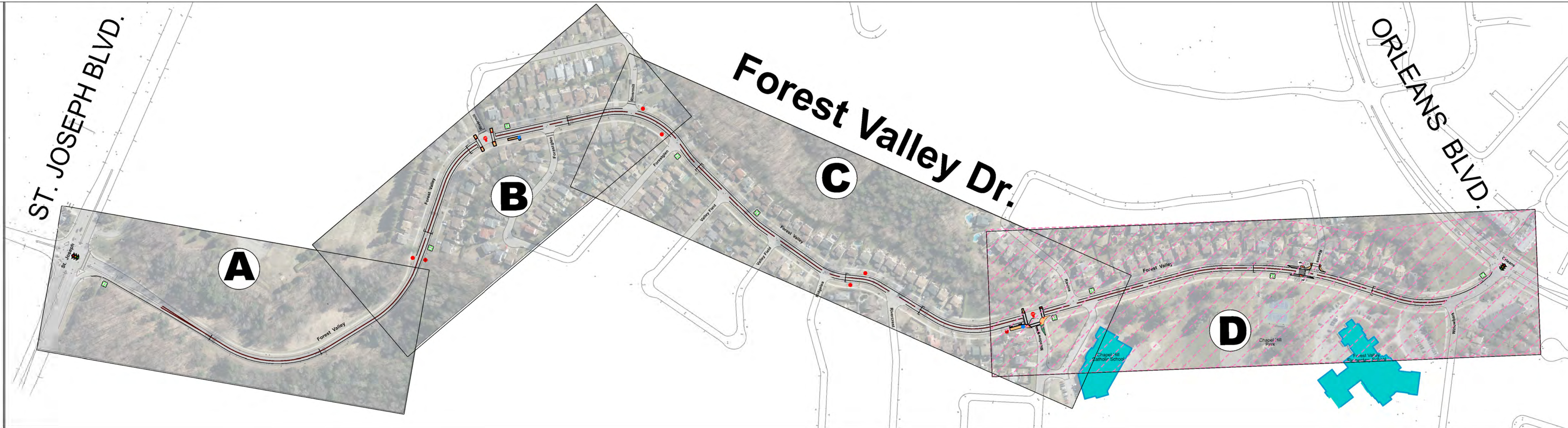
ST. JOSEPH BLVD. TO ORLEANS BLVD.

Neighbourhood Traffic Calming

| | | |
|---|--------------------------------|--|
| Reviewed By: <div>Kunjan Ghimire</div> | | Drawing No.: <div>C</div> <div>OPTION 1</div> <div>Sheet 3 of 4</div> |
| Completed By: <div>Ken Taylor</div> | | |
| Scale: <div>1:500</div> | Date: <div>07/21/2022</div> | |



Planning, Real Estate
& Economic Dev. Dept.
Transportation Planning



FOREST VALLEY DRIVE

Forest Valley Drive Traffic Calming Study

ST. JOSEPH BLVD. TO ORLEANS BLVD.

Neighbourhood Traffic Calming

| | | |
|---|--------------------------------|---|
| Reviewed By: <div>Kunjan Ghimire</div> | | Drawing No.: <div>D</div> <div>OPTION 1</div> <div>Sheet 4 of 4</div> |
| Completed By: <div>Ken Taylor</div> | | |
| Scale: <div>1:500</div> | Date: <div>07/21/2022</div> | |