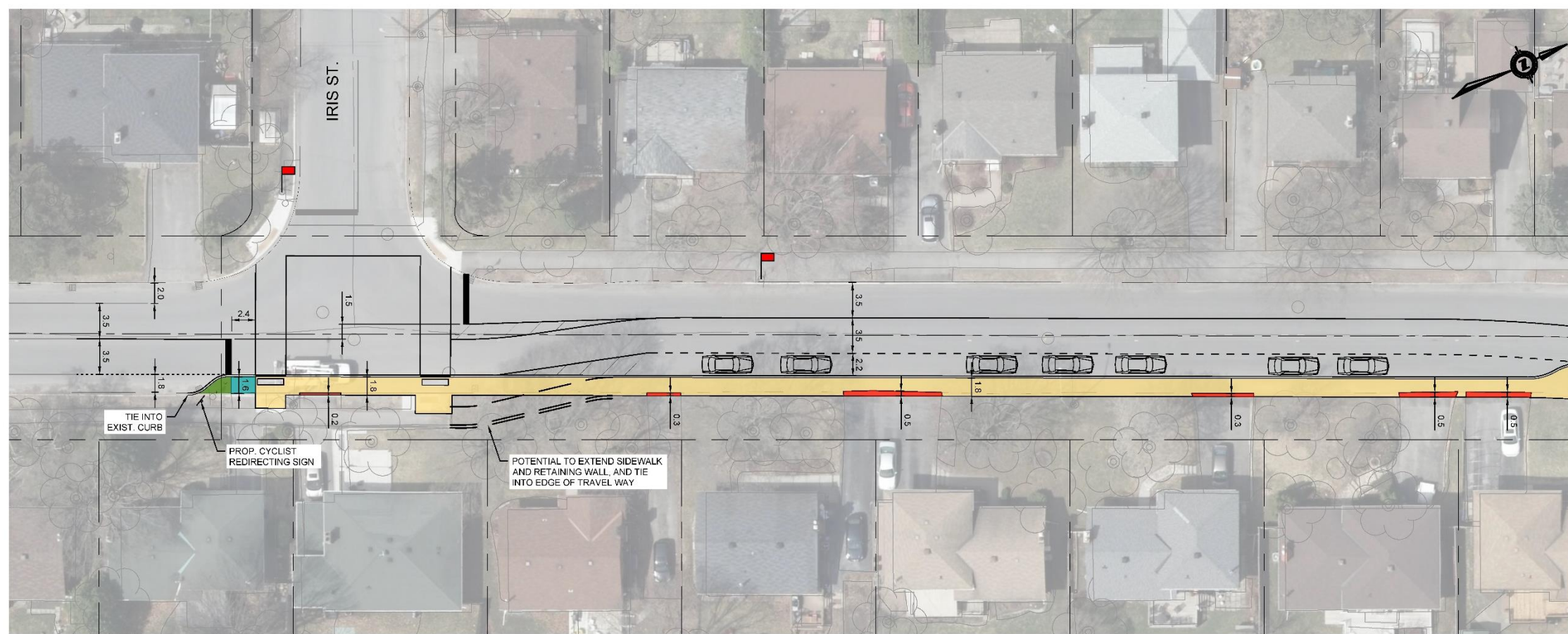


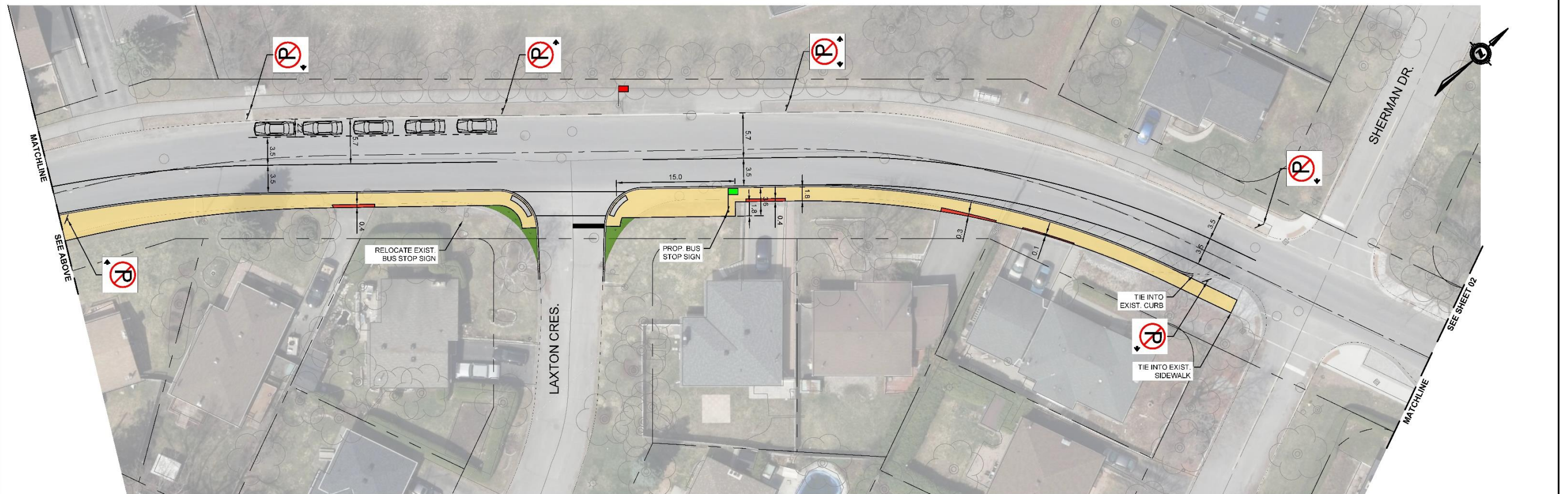
Functional Design Plan for Navaho Road Figure 1

DRAWING FRAME: 750mm x 554mm City of Ottawa, 2008



NAVAHO DRIVE

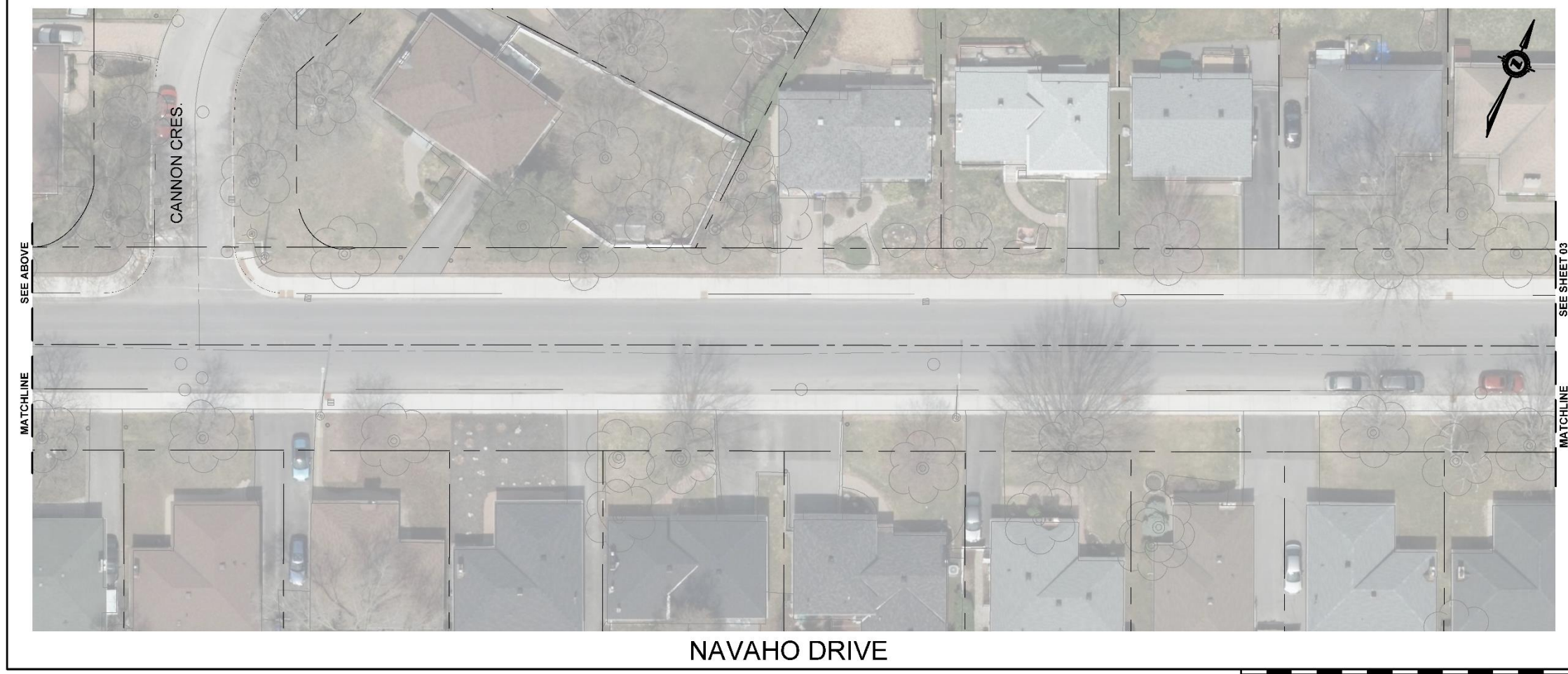
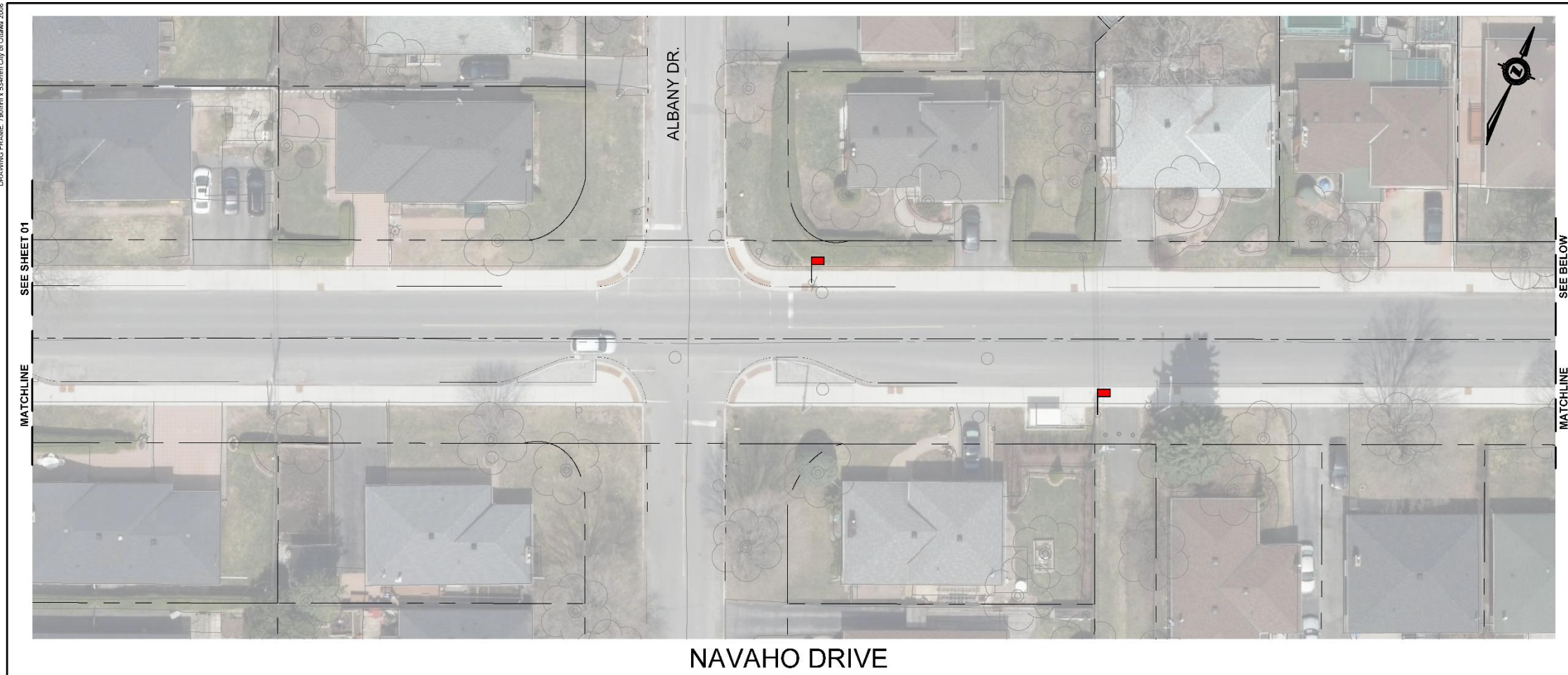
OTTAWA SIDEWALK PROGRAM CITY OF OTTAWA NAVAHO DRIVE			
PROPOSED LAYOUT NAVAHO DRIVE		Contract No.	Dwg. No.
		Sheet 01 of 03	
		Asset No.	
		Asset Group	
Des.	K.G.	Chkd.	I.B.
Dwn.	K.G.	Chkd.	I.B.
Utility Circ. No.		Index No.	
Const. Inspector			
Scale:			
0m		HORIZONTAL	
0m		VERTICAL	
NOTE: The location of utilities is approximate only, the exact location should be determined by consulting the municipal authorities and utility companies concerned. The contractor shall prove the location of utilities and shall be responsible for adequate protection from damage.			
REVISIONS			
No.	Description	By	Date (dd/mm/yy)
LEGEND:			
	EXIST. BUS STOP SIGN		PROP. BUS STOP SIGN



NAVAHO DRIVE

Figure 2

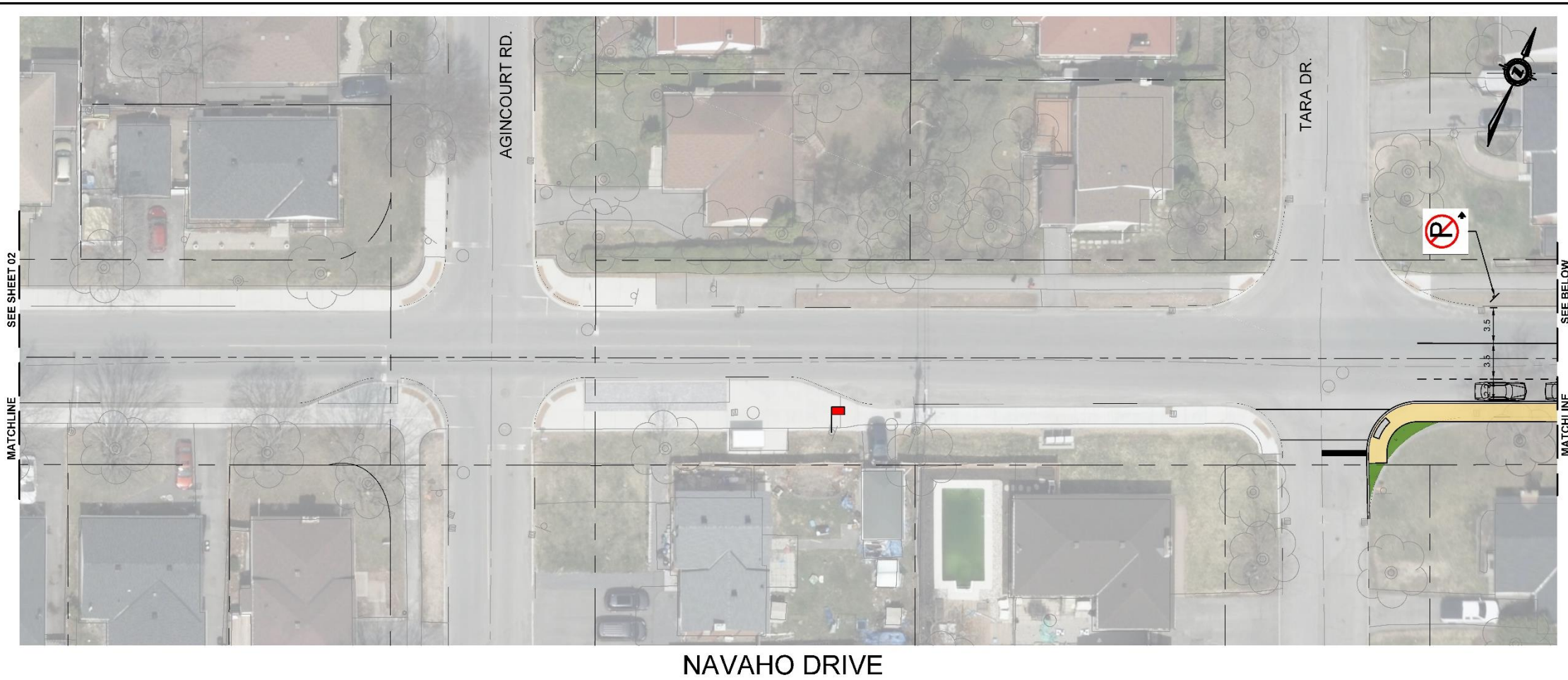
DRAWING FRAME: 760mm x 534mm City of Ottawa 2008



OTTAWA SIDEWALK PROGRAM CITY OF OTTAWA NAVAHO DRIVE				
PROPOSED LAYOUT NAVAHO DRIVE		Contract No.	Dwg. No.	
		Sheet 02 of 03		
		Asset No.		
		Asset Group		
Des.	K. G.	Chkd.	I. B.	
Dwn.	K. G.	Chkd.	I. B.	
Utility Circ. No.		Index No.		
Const. Inspector				
Scale: HORIZONTAL				
Dim 2.5 5 10				
Dim VERTICAL				
NOTE: The location of utilities is approximate only, the exact location should be determined by consulting the municipal authorities and utility companies concerned. The contractor shall prove the location of utilities and shall be responsible for adequate protection from damage.				
REVISIONS	No.	Description	By	Date (dd/m/yyyy)
LEGEND:				
	EXIST. BUS STOP SIGN		PROP. BUS STOP SIGN	

Figure 3

DRAWING FRAME: 750mm x 534mm City of Ottawa 2008



NAVAHO DRIVE

OTTAWA SIDEWALK PROGRAM
CITY OF OTTAWA
NAVAHO DRIVE

Contract No. _____ Dwg. No. _____

Sheet 03 of 03

Asset No. _____

Asset Group _____

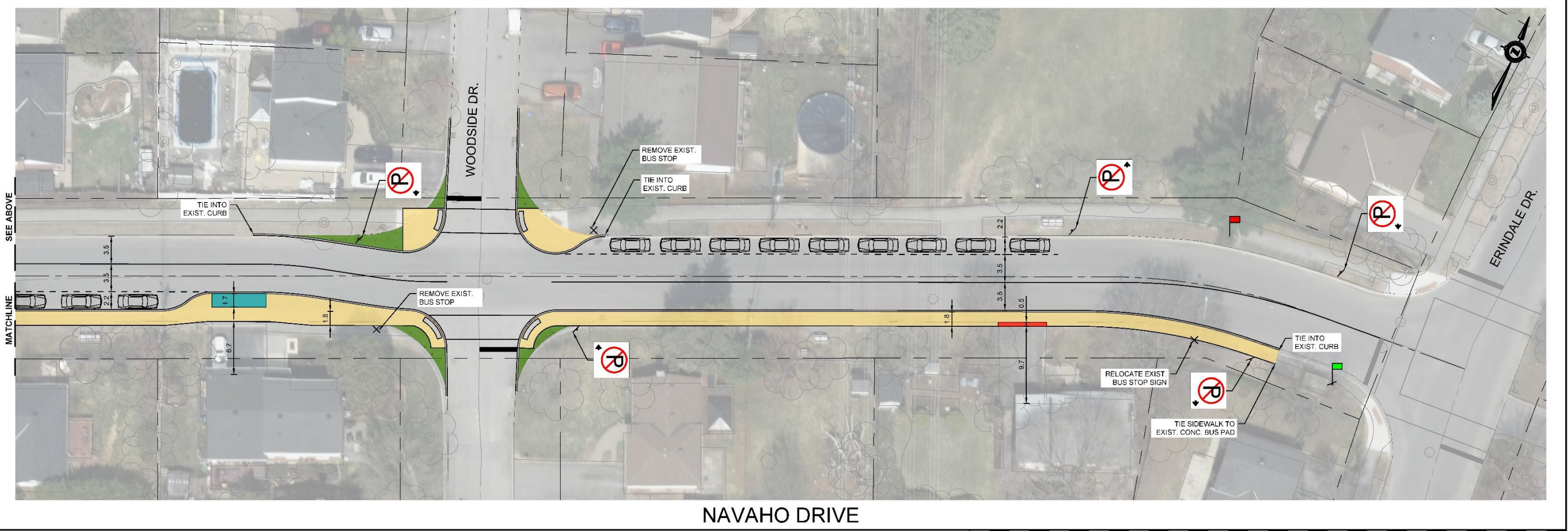
Des. K.G. Chk'd. I.B.
Dwn. K.G. Chk'd. I.B.
Utility Circ. No. Index No.
Const. Inspector _____

Scale:
HORIZONTAL: 0m 2.5 5 10
VERTICAL: 0m

NOTE:
The location of utilities is approximate only, the exact location should be determined by consulting the municipal authorities and utility companies concerned. The contractor shall prove the location of utilities and shall be responsible for adequate protection from damage.

No.	Description	By	Date (dd/mm/yy)

LEGEND:
■ EXIST. BUS STOP SIGN ■ PROP. BUS STOP SIGN



NAVAHO DRIVE