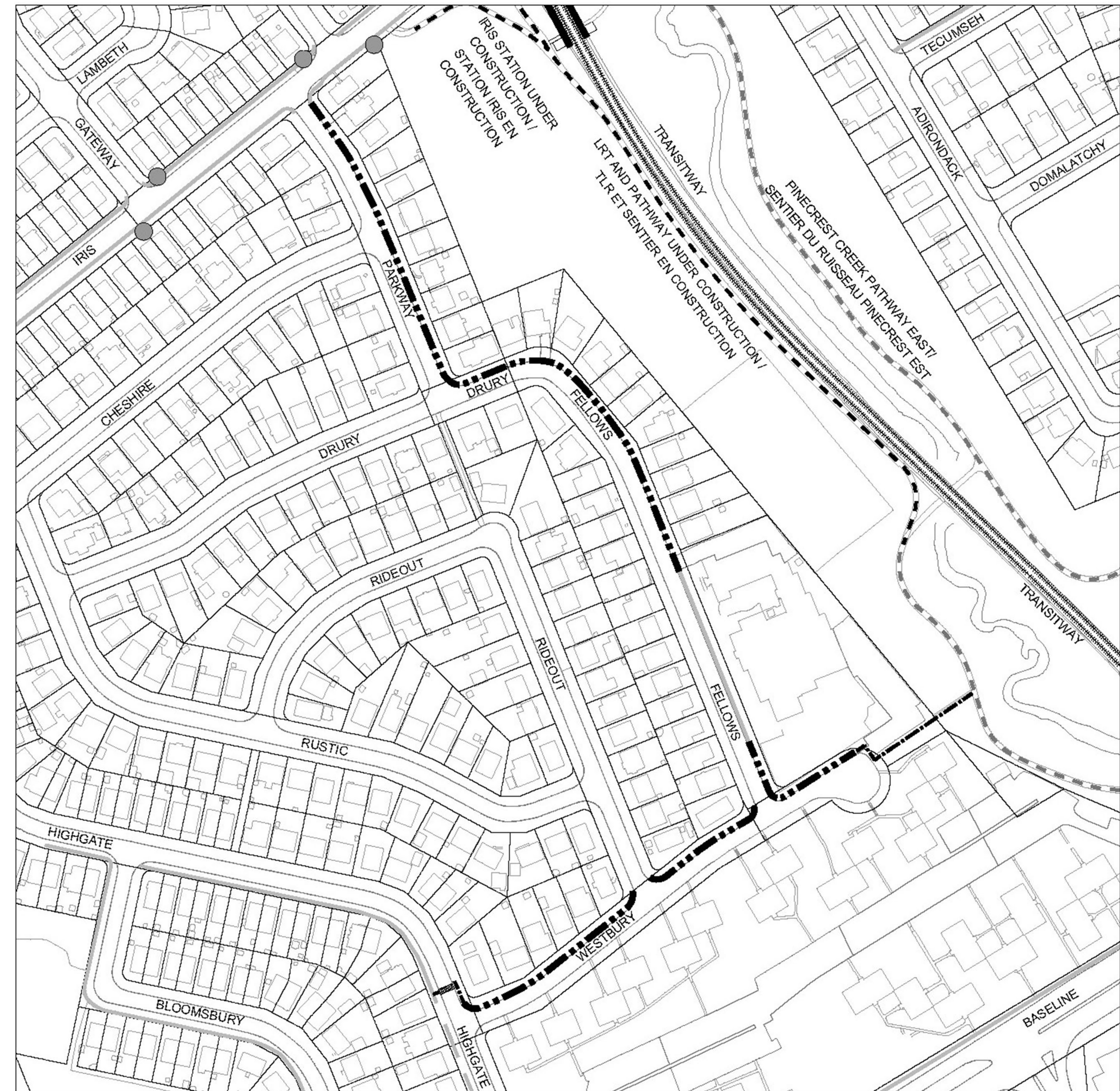


# New Sidewalk on Parkway Drive, Fellows Road, Westbury Road



Legend /		New Sidewalk / Nouveau trottoir
Légende		Extension to Pathway / Sidewalk Under Consideration / Prolongement du sentier et du trottoir à l'étude
		Existing Sidewalk / Trottoir existant
		Existing Multi-use Pathway / Sentier polyvalent existant
		Bus Stop / Arrêt d'autobus



# 2013 Ottawa Pedestrian Plan & Policy

- The sidewalk on Parkway Drive, Fellows Road and Westbury Road is a Phase 3 project from the Council-approved 2013 **Ottawa Pedestrian Plan**. The Ottawa Pedestrian Plan can be viewed on the City of Ottawa website using the following link:
  - [Ottawa Pedestrian Plan](#)
- City policy states that local roads leading directly to a school should have a pedestrian facility.
- The provision of a sidewalk aligns with the City's transportation goals and objectives to maximize walkability and create safe pedestrian environments for vulnerable users such as children, seniors, wheelchair users and persons with vision impairment. Tactile walking surface indicators will be installed at pedestrian crossings along the new sidewalk.
- The sidewalk will improve walkability in this residential area facilitating access to Terre-des-Jeunes Catholic Elementary School, the Iris Transitway/Light Rail Transit Station and the pedestrian pathways within the neighbourhood including the Pinecrest Creek Pathway.

## Construction Details

- A sidewalk is proposed on the:
  - East side of Parkway Drive from Iris Street to Drury Lane
  - North side of Drury Lane / east side of Fellows Road from Parkway Drive to Westbury Road
  - North side of Westbury Road from Highgate Road to the end of the cul-de-sac.
- The proposed sidewalk will generally be installed within the City's right-of-way.
- A pedestrian crossover is considered on Highgate Road just north of Westbury Road.
- Street trees will be protected during construction. This includes pruning by qualified personnel prior to construction and using hydrovac excavation for trees at risk to protect root systems.
- Construction of a new 3.0 metre pathway connection from the end of the Westbury Road cul-de-sac east of Fellows Road to the Pinecrest Creek Pathway is under discussion.
- Westbury Road will be narrowed to 7.5 metres wide from Highgate Road to Fellows Road to reduce impacts to trees and on properties while still allowing on-street parking on one side of the street.
- The roadways will also be narrowed in segments where feasible along Parkway Drive and Drury Lane / Fellows Road to reduce impacts on mature trees.
- Landscaping and other features within the road right-of-way may be impacted during construction. Restoration will be included in the work.
- Details will be determined during design following field survey.
- Some trees on school and National Capital Commission property will be removed along new pathway

# Other Features: Tightening corner radii

- Narrowing at the intersection of a side street by tightening the corner radii will shorten the crossing to reduce pedestrian crossing distances at intersections.



## Other Features: Tactile walking surface indicators

- Tactile walking surface indicators are plates installed level with the concrete that are meant to be detectable underfoot or with a cane. They are used to warn people of a potential hazard such as a roadway.



## At-Grade Pedestrian Crossover

Pedestrian Crossovers are designated areas that allow pedestrians to safely cross a road where vehicles must yield to pedestrians when crossing.

### PROS

- Improves safety of pedestrians crossing a street
- Increases driver awareness of pedestrians
- Allows pedestrians (and cyclists once dismounted) to have priority and cross the street without delay

### CONS

- Cyclists must dismount and walk.



## Raised Pedestrian Crossover / Raised Crosswalk

Raised crossings are marked pedestrian crossings at intersections or mid-block locations, constructed at a higher elevation than the adjacent roadway.

### PROS

- Reduces vehicle speeds at / near the crossing
- Is self-enforcing
- Reinforces the stop condition, if present
- Improves proportion of drivers yielding to vulnerable road users
- Increases comfort for vulnerable road users

### CONS

- May increase traffic induced noise and vibrations
- May impact emergency response activities
- May cause discomfort to transit users and drivers (school buses – no transit on study area streets)
- May increase vehicle travel time
- May give pedestrians a false sense of security










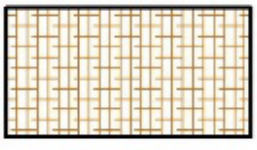

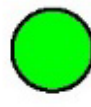

## Sidewalk Design Details

- Details of the proposed sidewalk design are illustrated in the following slides for Parkway Drive, Drury Lane, Fellows Road and Westbury Road.
- The following legend is the same for all drawings.

### General Notes:

- All Grading to Provide Positive Drainage to the Road.
- Strips of Residential Driveways to be Removed and Reinstated.
- Width of Removal and Reinstatement of Residential Driveways Will Vary Depending on Slope Required for Drainage.
- Protect Existing Trees Within Work Zone.

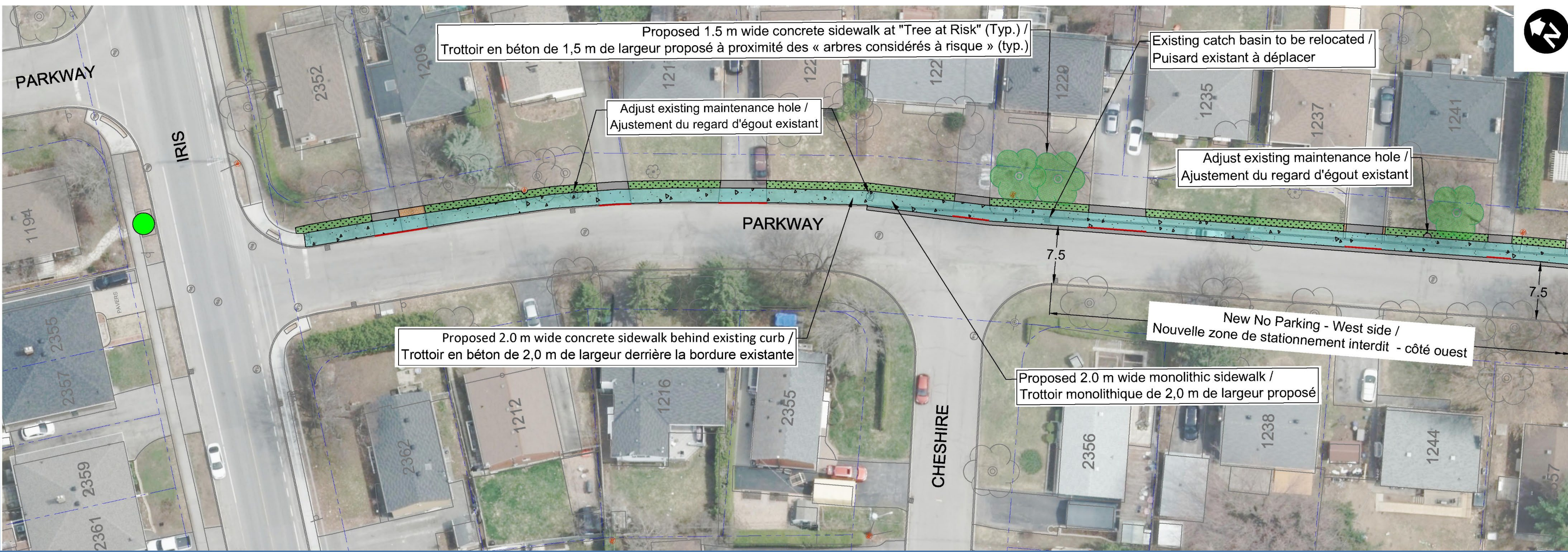
### Legend / Légende

	New Concrete Sidewalk / Nouveau trottoir en béton		New Catch Basin / Nouveau puisard		Tree Identified as at Risk / Arbres considérés à risque
	Sod / Gazon		New Asphalt Paving / Nouveau revêtement en asphalte		Depressed Curb / Bordure surbaissée
	Property line / Limite de la propriété		Paver Driveway / Entrée en pavé		Tactile Walking Surface Indicator / Indicateur tactile de surface de marche
	Bus Stop / Arrêt d'autobus		New Concrete Curb / Nouvelle bordure en béton		



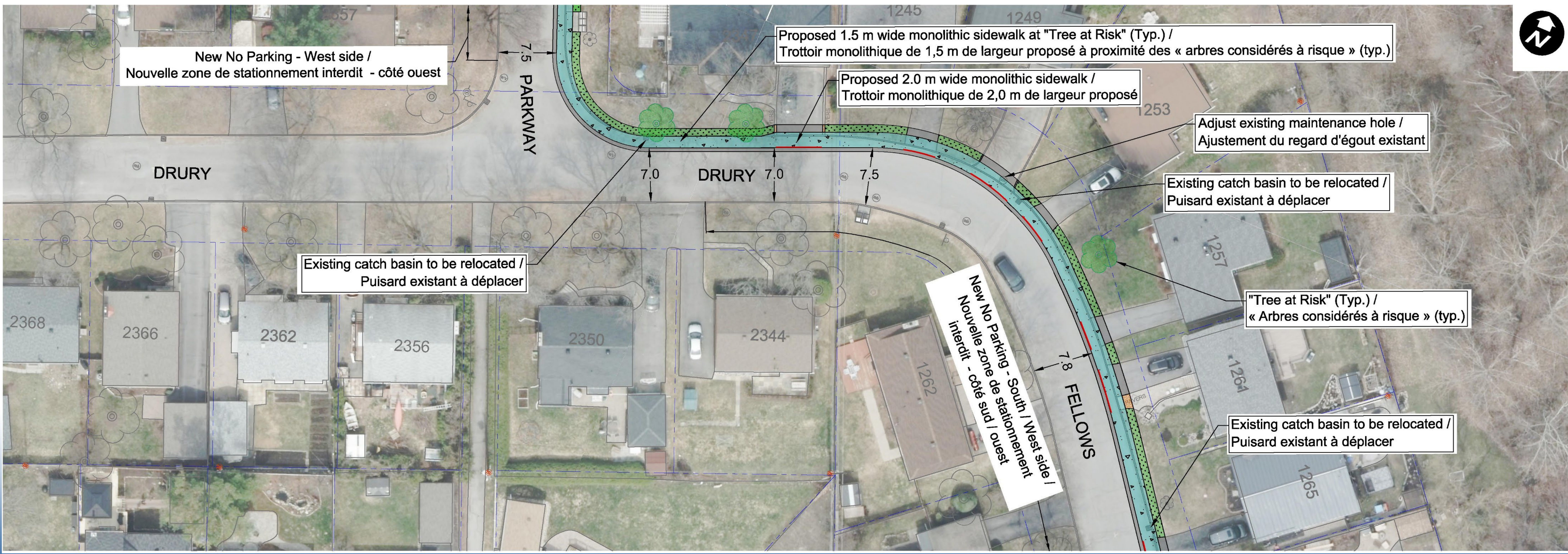
## Parkway Drive

- 2.0 metre sidewalk on east side of Parkway Drive from Iris Street to Drury Lane
- Sidewalk will be reduced to 1.5 metres at 1229 Parkway Drive to protect trees at risk
- Road will be narrowed to 7.5 metres from Cheshire Road to Drury Lane to protect trees at risk
- On-street parking will be allowed on the east side of street only where road is narrowed between Cheshire and Drury



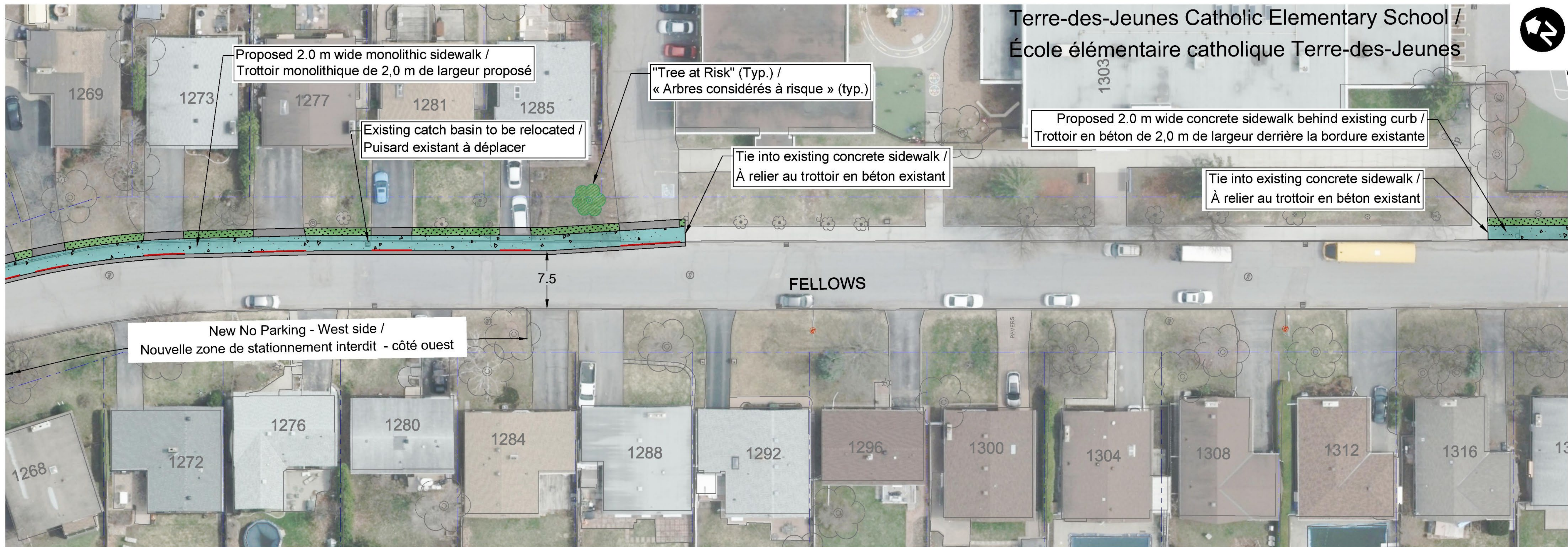
## Drury Lane / Fellows Road

- 2.0 metre sidewalk on north side of Drury Lane and east side of Fellows Road
- Sidewalk will be reduced to 1.5 metres at 2347 Drury Lane to protect trees at risk
- Road will be narrowed between 7.0 metres and 7.8 metres from Parkway Drive to approximately 1285 Fellows Road to protect trees at risk
- On-street parking will be banned where the road width is less than 7.5 metres and reduced to one side of street where road is 7.5 metres



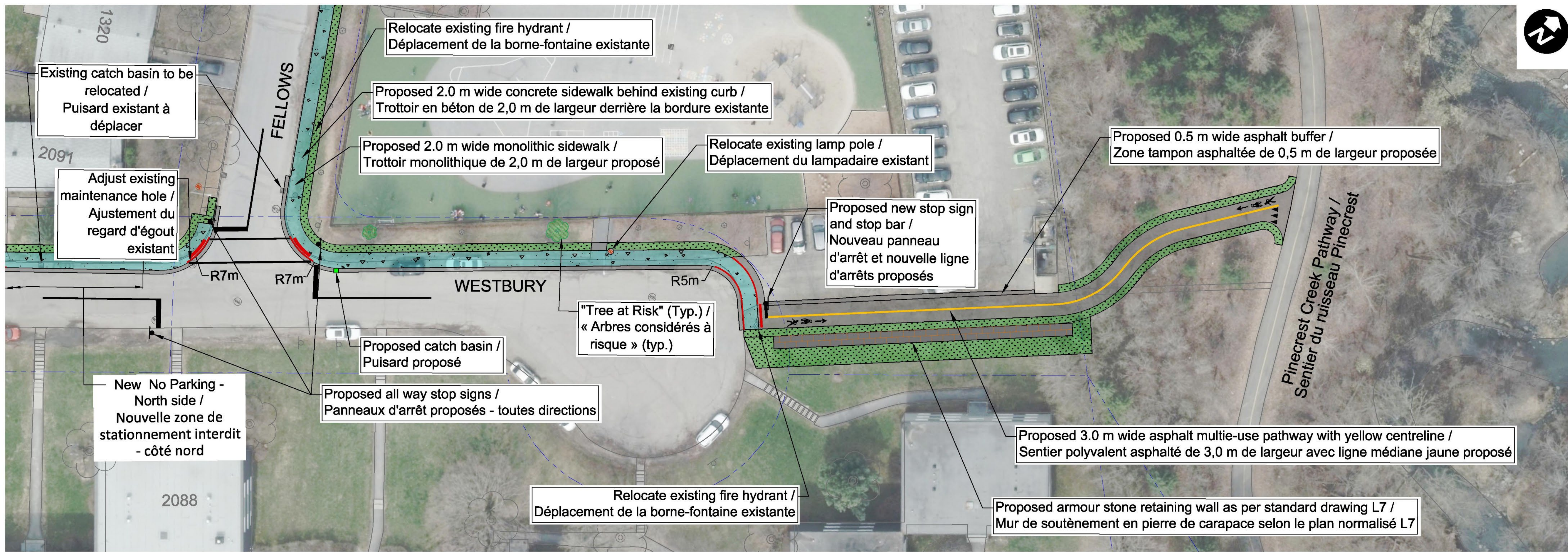
## Fellows Road

- 2.0 metre sidewalk on east side of Fellows Road to Westbury Road
- Sidewalk will tie into the existing sidewalk in front of the school
- Road will be narrowed between 7.0 metres and 7.8 metres from Parkway Drive to approximately 1285 Fellows Road to protect trees at risk
- On-street parking will be banned where the road width is less than 7.5 metres and reduced to one side of street where road is 7.5 metres



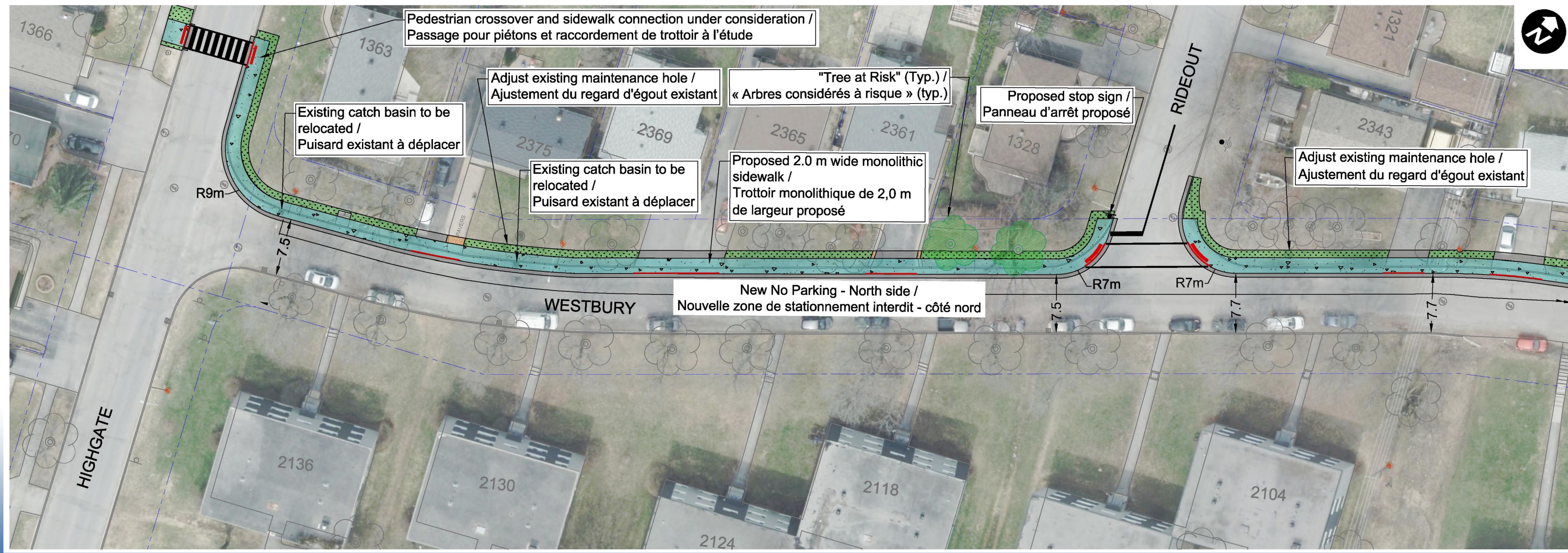
## Westbury Road – Fellows Road to Pinecrest Creek Pathway

- 2.0 metre sidewalk on north side of Westbury Road from Fellows Road to the end of cul-de-sac
- 3.0 metre MUP at the end of the cul-de-sac extending from the sidewalk to the Pinecrest Creek Pathway
- All way stop proposed at Fellows Road intersection with crosswalks



## Westbury Road

- 2.0 metre sidewalk on north side of Westbury Road from Highgate Road to Fellows Road
- Road will be narrowed to 7.5 metres from Highgate Road to Rideout Crescent to protect trees at risk
- Stop sign proposed on Rideout Crescent with crosswalk on the north side
- On-street parking will be reduced to one side of street between Highgate and Fellows Roads
- A pedestrian crossover may be added to Highgate Road to facilitate pedestrian crossings

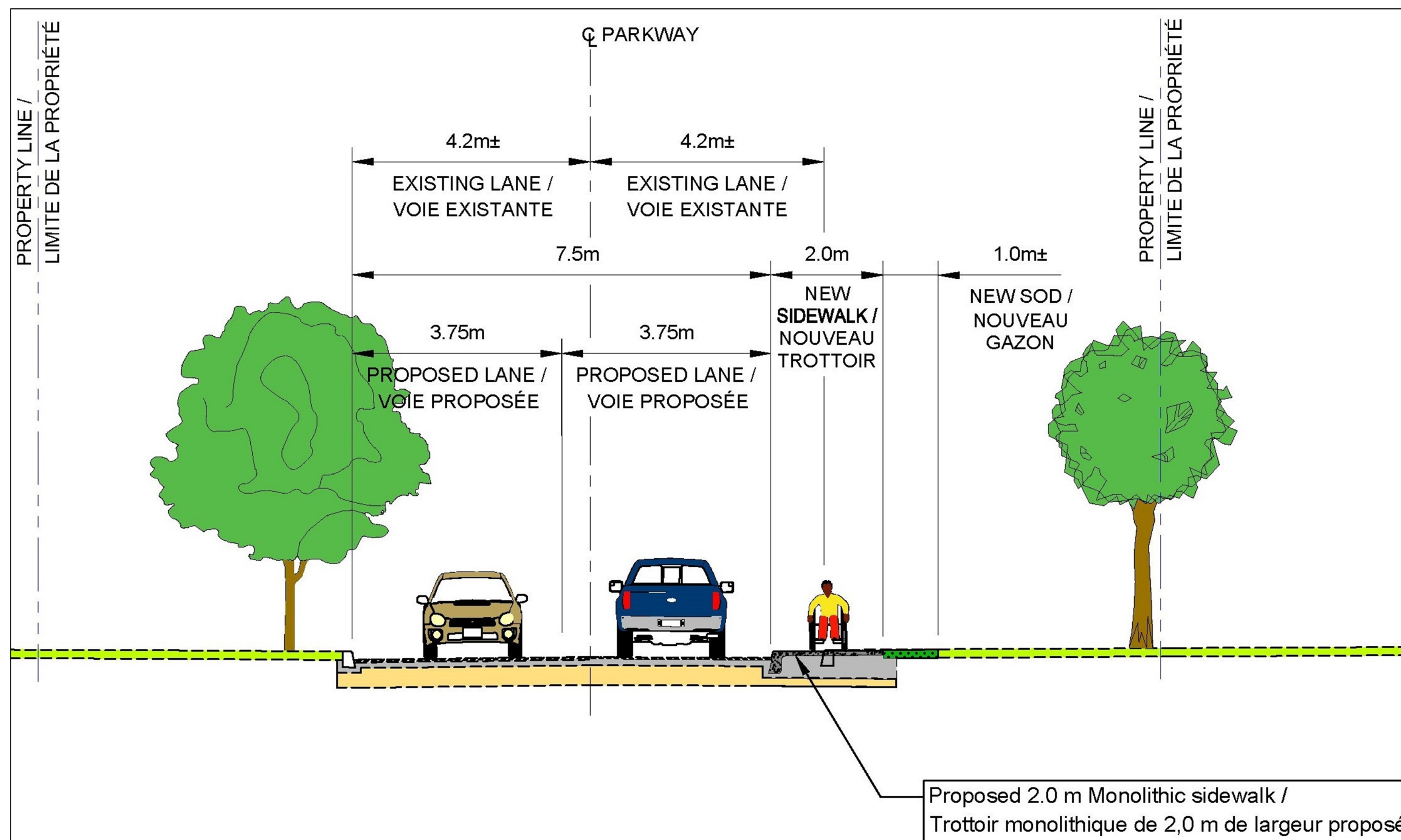


## Highgate Road Pedestrian Crossover

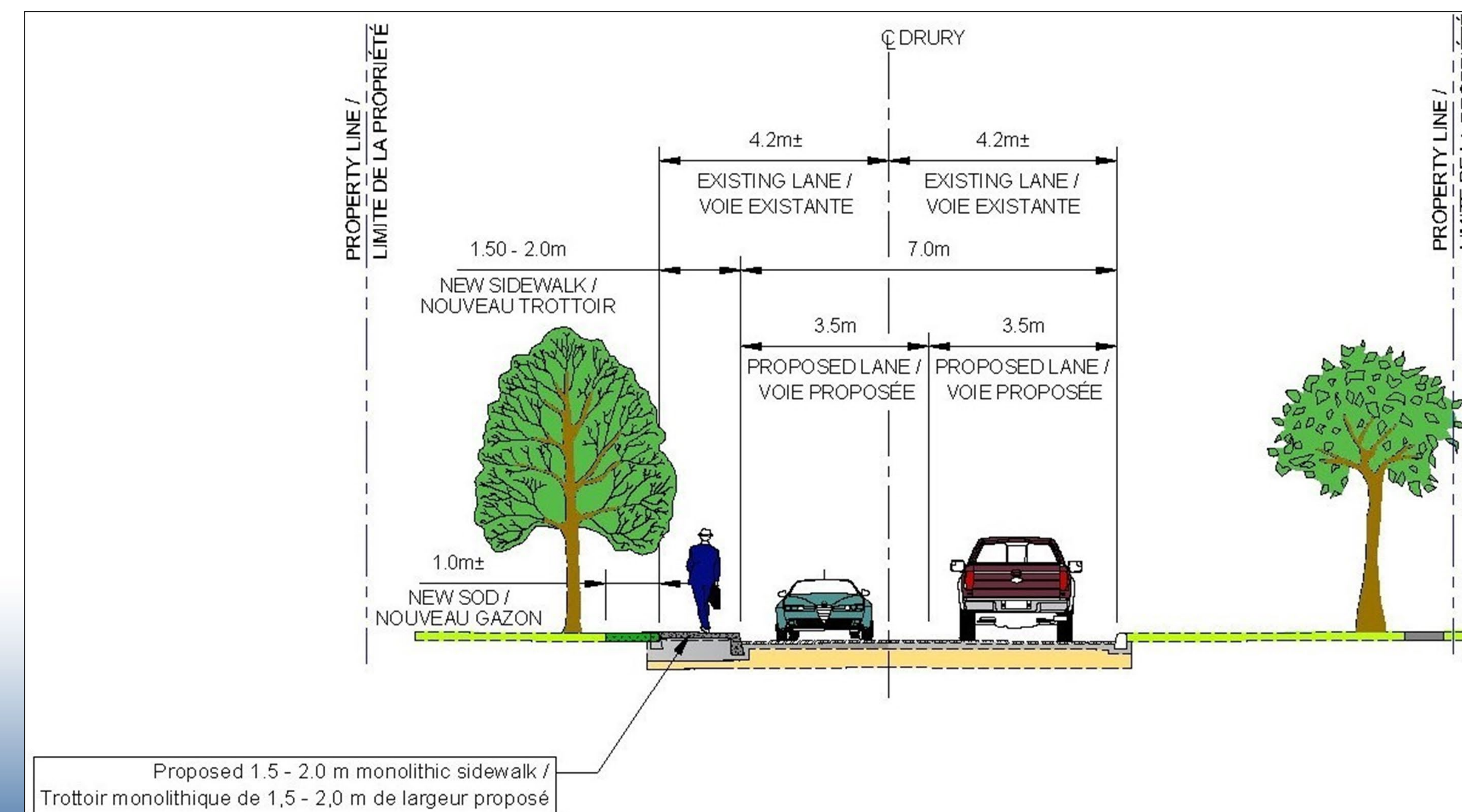
- Pedestrian crossover at north edge of property at 1366 Highgate Road is being considered
- Pedestrian crossover may be raised
- If crossover is added, a 2.0 metre sidewalk, approximately 15 metres in length, will be constructed on the east side of Highgate Road extending from proposed sidewalk on Westbury Road to the pedestrian crossover

## Typical Cross-sections

Sidewalk partly in front of Existing Curb –  
Portions of Parkway, Fellows, Westbury

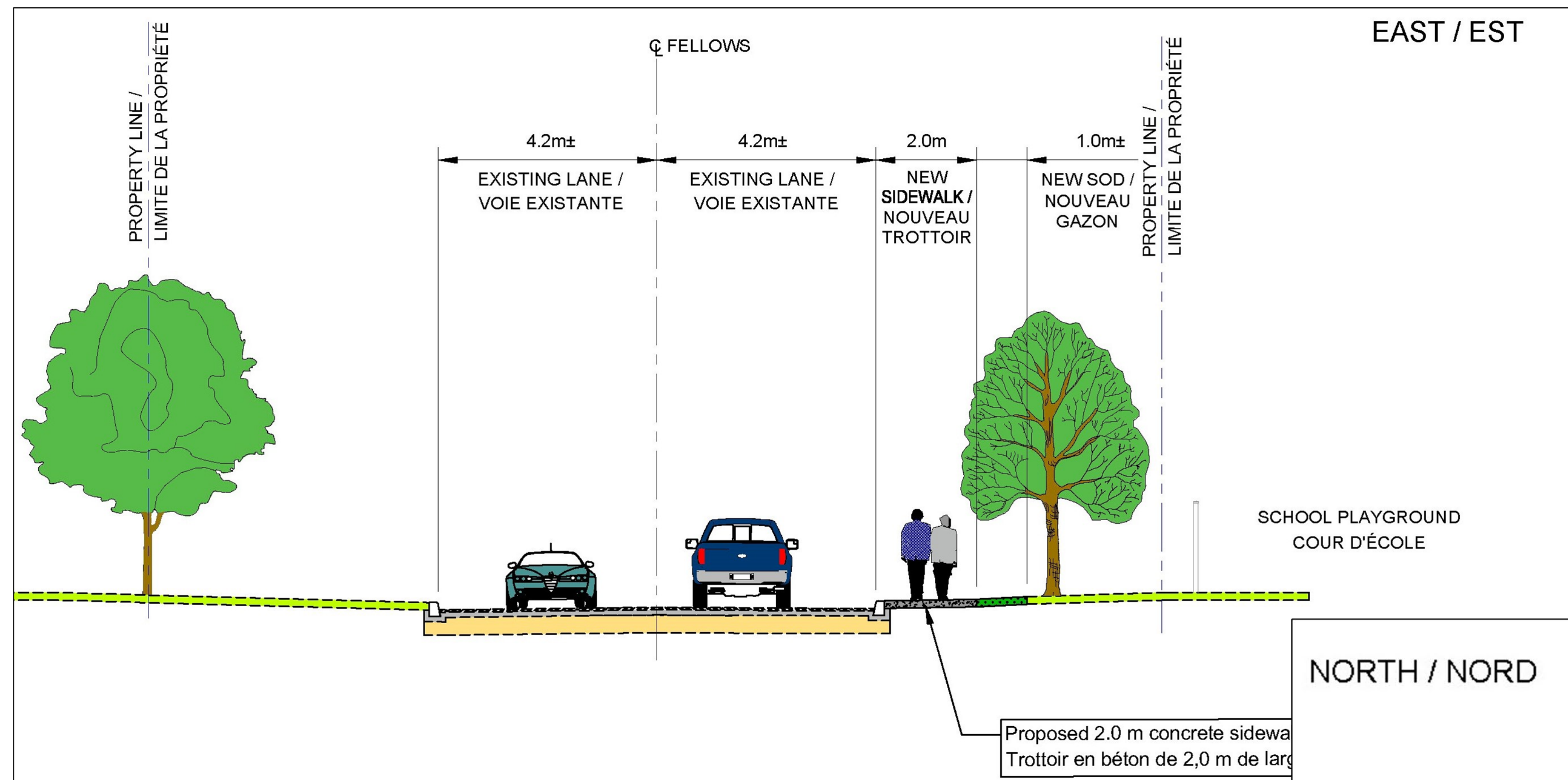


Sidewalk completely in front of Existing Curb - Drury

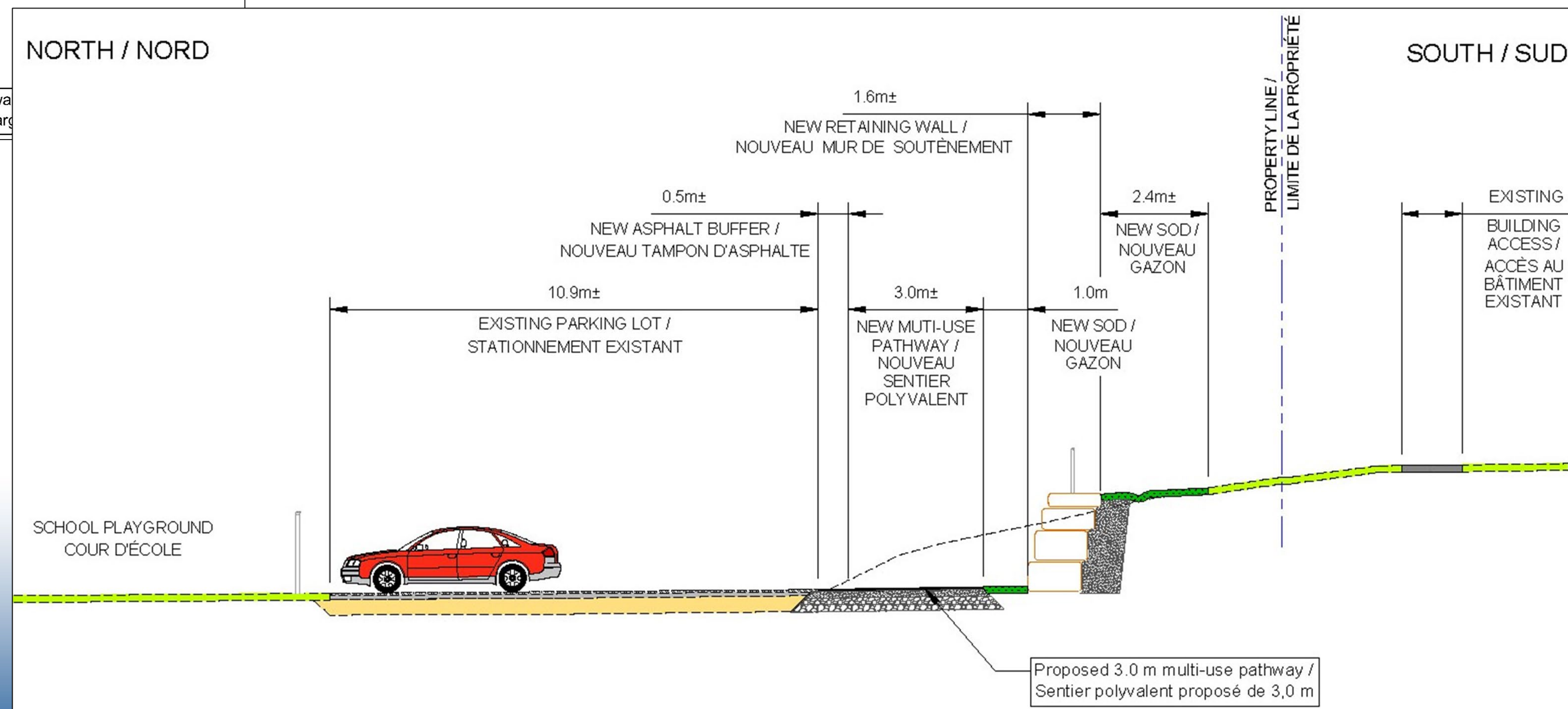


## Typical Cross-sections continued

Sidewalk behind Existing Curb – Portions of Parkway, Fellows

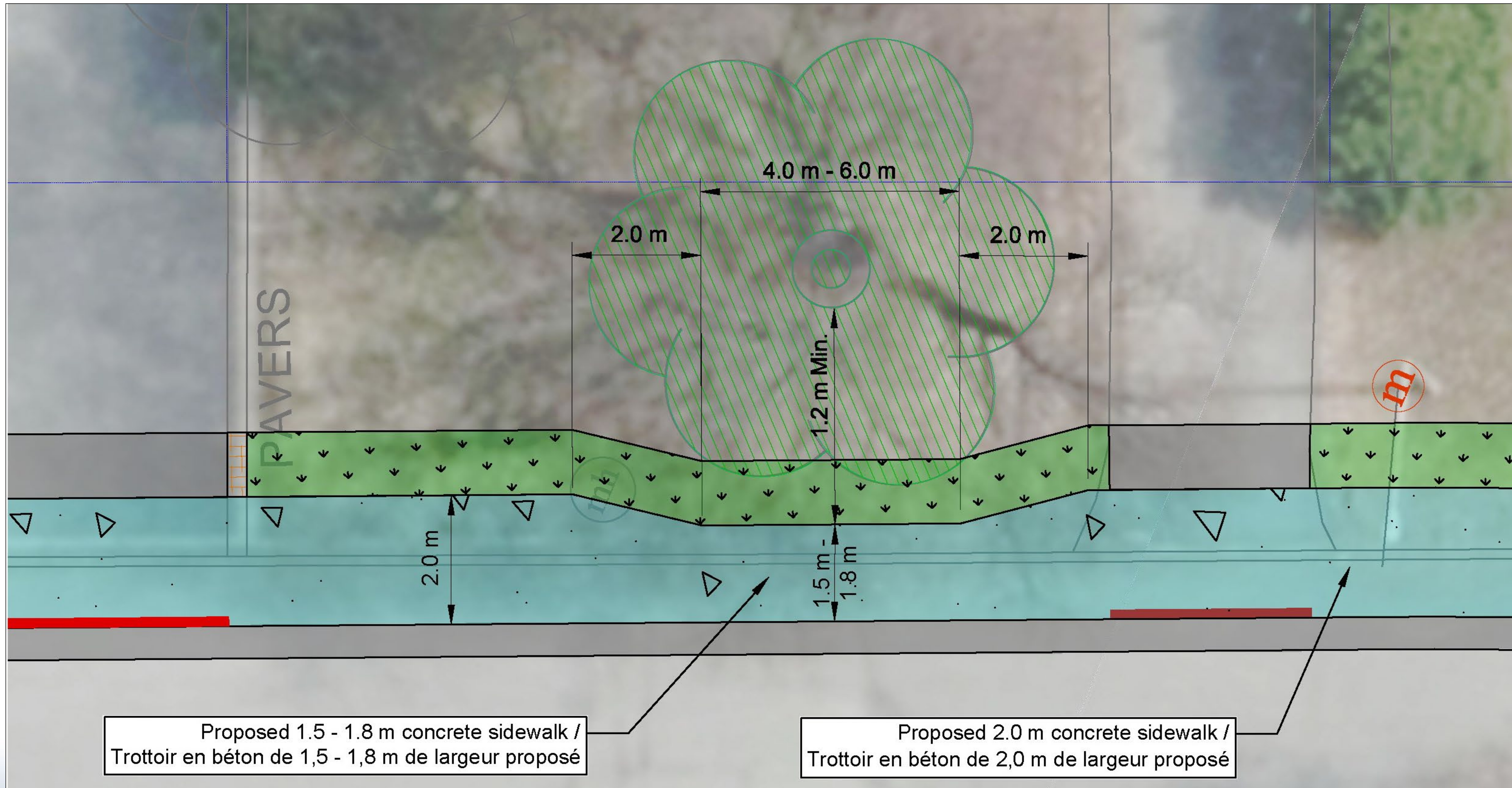


Multi-use Pathway east of Cul-de-sac in Parking Lot





## Sidewalk Detail at 'Tree at Risk' as identified by City Forestry



# Construction Timing

City's estimated timeline for this proposed project:

- 2022 Finalize Approvals
- 2022 Detailed Design
- 2023 Construction

# Next Steps

- Please provide your comments by June 17, 2022 to:

Robin Bennett, M.C.I.P., R.P.P.

Project Manager, Cycling Programs

Transportation Planning

City of Ottawa

[Email Address robin.bennett@ottawa.ca](mailto:robin.bennett@ottawa.ca)

- The City will complete project planning with consideration for comments received.

**Thank you!**