
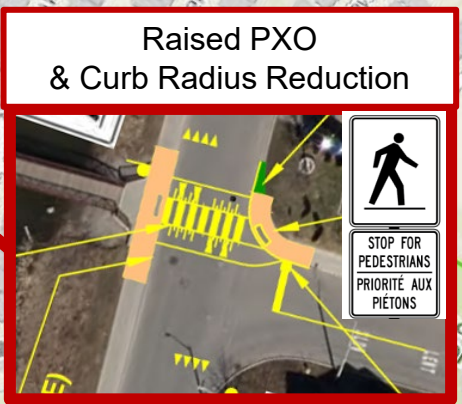
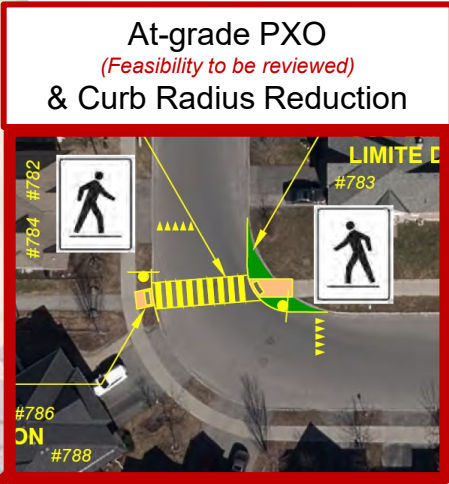
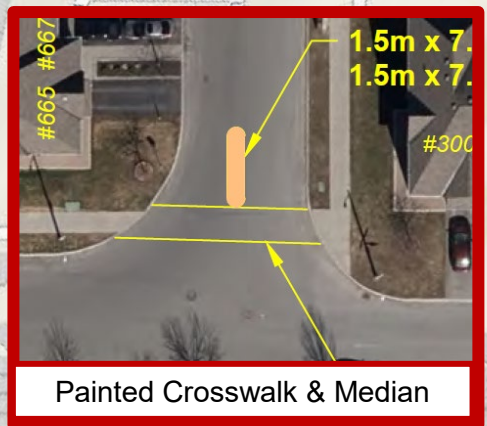



White Alder Avenue Traffic Calming Concept Plan

June 2022

Interactions 

 [Learn more](#)



 Speed hump
(6 locations)

 Stop Flex Stake

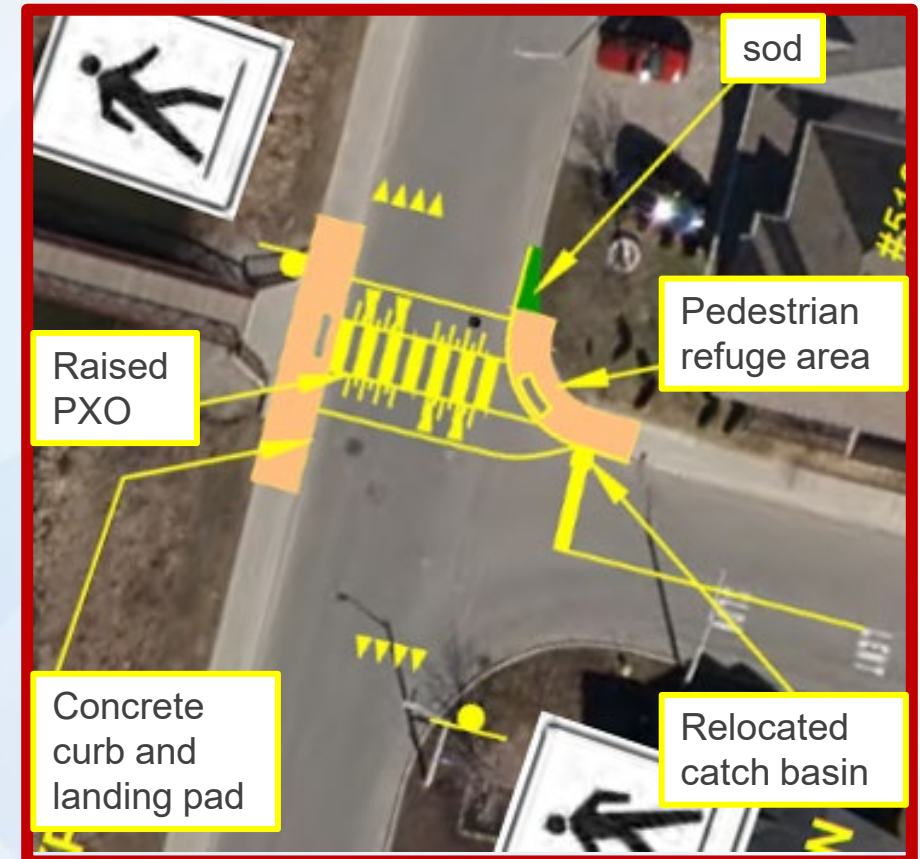


Spartina / White Alder



View a similar location in Ottawa on Google Street View

Proposed Modification(s)	Purpose
<p>? Raised <u>Pedestrian Crossover (PXO)</u> (connecting to the pedestrian bridge)</p>	<ul style="list-style-type: none">• Completes a missing pedestrian link to Diamond Jubilee Park.• Improves pedestrian mobility, safety, and comfort• A raised crossing improves visibility and slows traffic.
<p>? Curb Radius Reduction</p>	<ul style="list-style-type: none">• Radius reduction reduces the new crossing distance and promotes slower turns between Spartina and White Alder.



Click here to go back to the Concept Plan

Raised crossings are marked pedestrian and / or cycling crossings at intersections, or mid-block locations, constructed at a higher elevation than the adjacent roadway

PROS

- Reduces vehicle speeds at / near measure
- Self-enforcing
- Improves proportion of drivers yielding to vulnerable road users
- Increased comfort for vulnerable road users

CONS

- May increase traffic induced noise and vibrations
- May impact emergency response activities
- May cause discomfort to bus users and drivers
- May increase vehicle travel time
- May result in a false sense of security



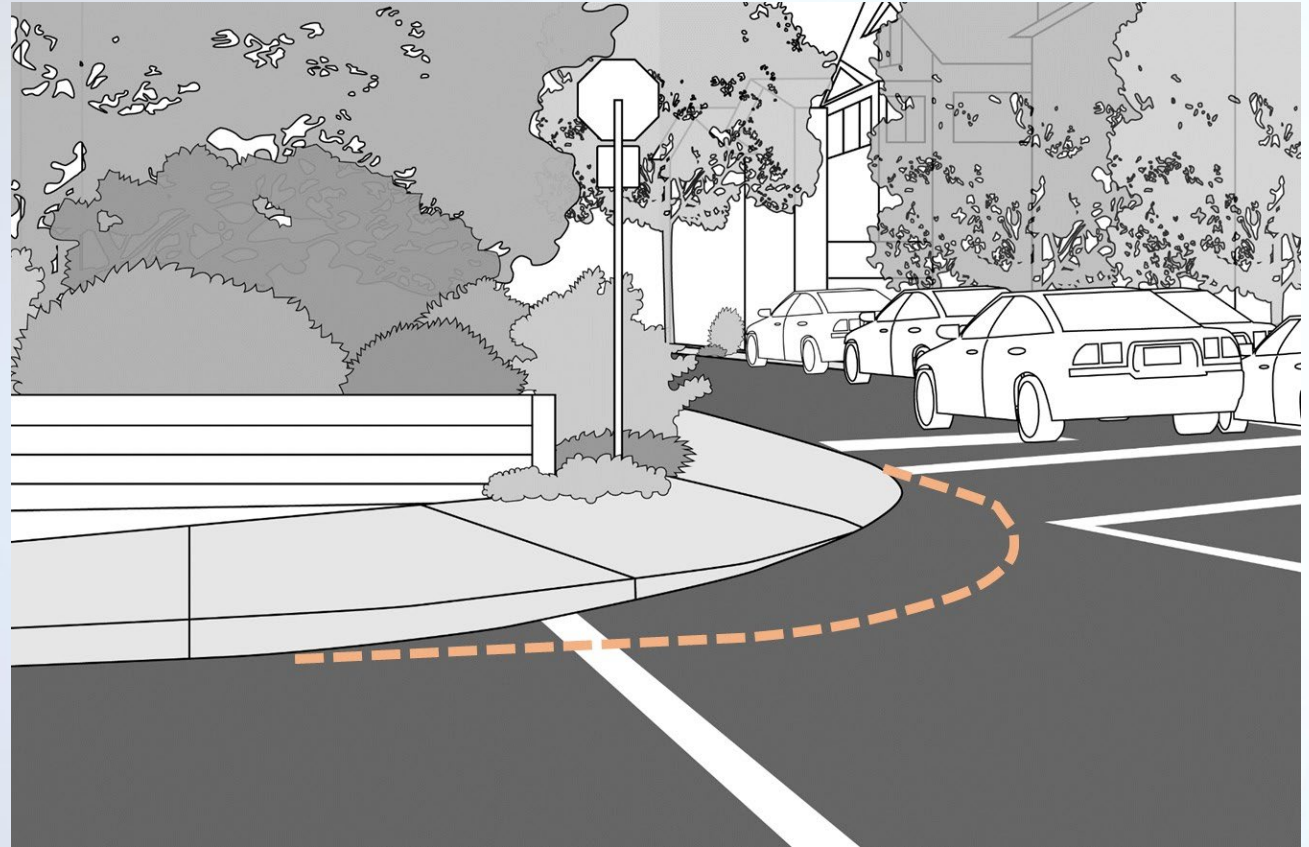
Curb radius reductions involve modification of intersection corners to implement tighter corners (smaller radii)

PROS

- Shortens crossing distances
- Reduces speeds of right-turning vehicles
- No significant impacts on emergency services

CONS

- Potential for large vehicles to mount the curbside / sidewalk space
- Larger vehicles may need to cross into adjacent travel lanes





View a road with speed humps in Ottawa on Google Street View

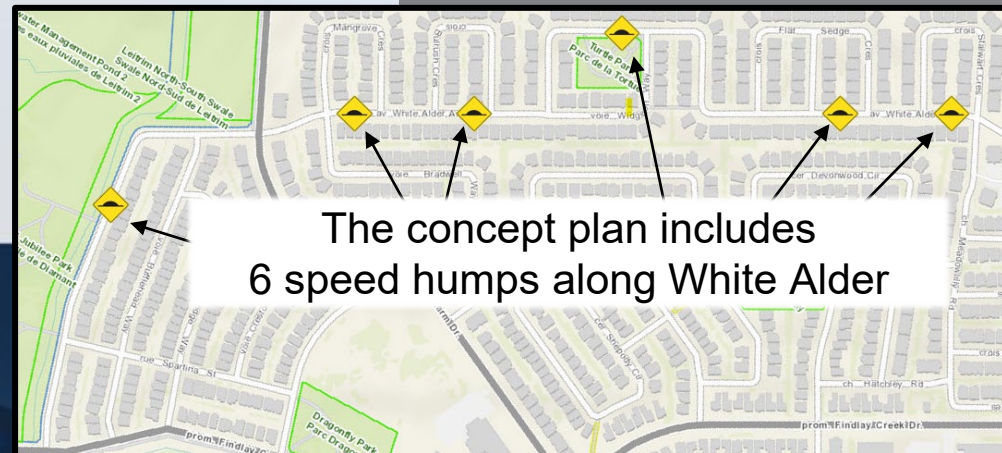
Speed humps are raised areas of the roadway, which cause vertical upward movement of traversing vehicles.

PROS

- Reduces vehicle speeds at / near measure
- Self-enforcing

CONS

- May increase traffic induced noise and vibrations
- May impact emergency response activities
- May increase vehicle travel time
- May cause discomfort to bus users and drivers



Click here to go back to the Concept Plan

Kelly Farm / White Alder



View a similar location in Ottawa on Google Street View

Proposed Modification(s)

Stop Flex Stake (west leg)



Purpose

- There is currently low stop compliance on the west leg of this intersection.
- The Stop Flex Stake reinforces the requirement to stop.



Widgeon (West) / White Alder

Proposed Modification(s)	Purpose
Painted Crosswalk	<ul style="list-style-type: none"> Highlights/clarifies the pedestrian crossing.
Median	<ul style="list-style-type: none"> Deters vehicles from cutting across other lanes, and encourages slower turns.



Raised median islands are elevated medians constructed on the centreline of a two-way roadway to reduce the overall width of adjacent travel lanes

PROS

- Can reduce vulnerable road user exposure to traffic by providing a refuge
- Improves visibility for vulnerable road users at crossings
- Reduces vehicle speeds
- Potential for improved street appearance (i.e. landscaping)
- No significant impacts on emergency services

CONS

- May restrict access
- May force motorists and vulnerable road users inadvertently into a shared space



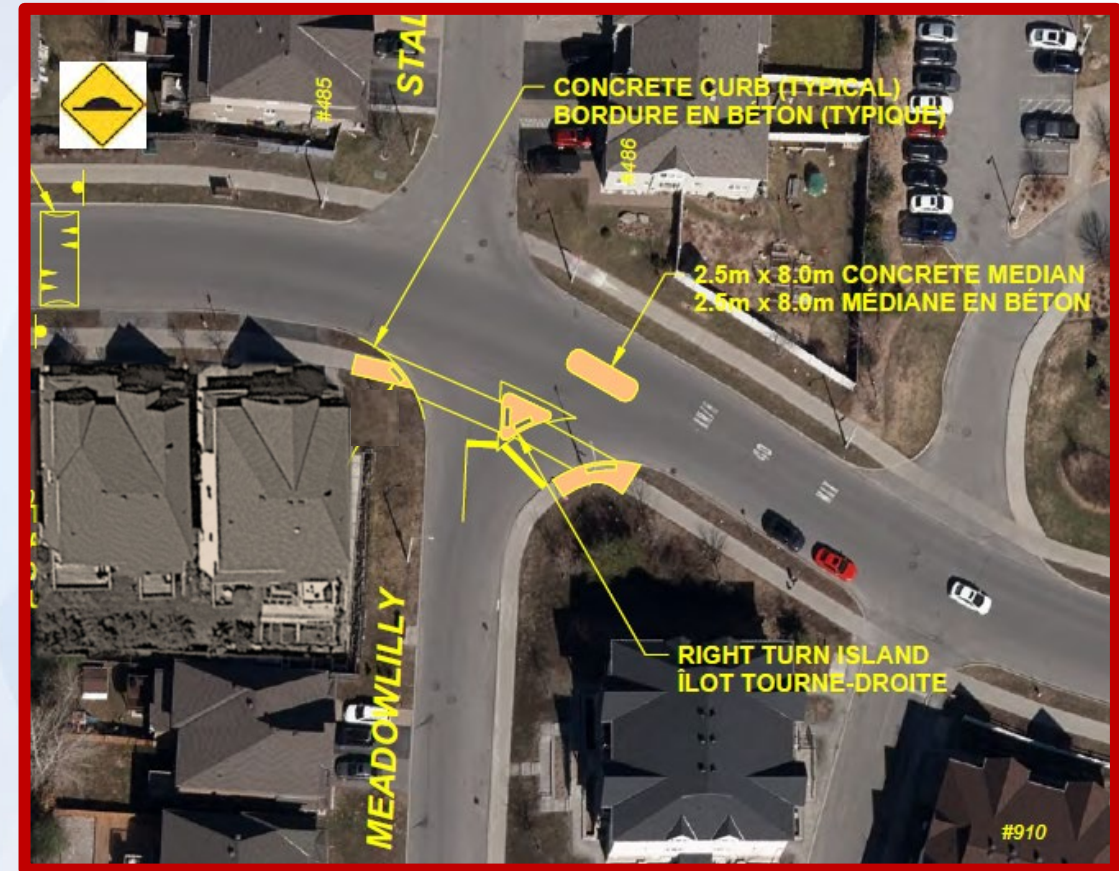
Curve to the west of Flat Sedge Crescent

Proposed Modification(s)	Purpose
<p><u>Pedestrian Crossover (PXO)</u> (connecting to the path between Widgeon and White Alder)</p>	<ul style="list-style-type: none"> Improves pedestrian mobility, safety, and comfort Completes a missing pedestrian link <p><i>Note: A pedestrian count will be conducted later this year to assess the feasibility of this PXO.</i></p>
<p>Curb Radius Reduction</p>	<ul style="list-style-type: none"> Radius reduction reduces the new crossing distance and promotes slower turns around the curve



Meadowlilly / White Alder

Proposed Modification(s)	Purpose
Median	<ul style="list-style-type: none">• Reduces width of lanes to reduce speeds.• Gateway feature to set context of residential neighbourhood.
Right Turn Channel	<ul style="list-style-type: none">• Significantly reduces unprotected pedestrian crossing distance.• Helps Meadowlilly traffic make a safer right turn onto White Alder.



Next steps

Milestone	Approximate Timeline
Online Consultation	Until August 5 th
As We Heard It Report (Results of the online survey – Posted on project webpage)	Summer/Fall 2022
Revise Concept Plan (if required) Final Approval of Concept Plan	Fall 2022
Detailed Design	2023
Construction	Currently anticipated for 2024

How to share your feedback



Fill out the online survey by August 5th



Email your questions or comments to our team

